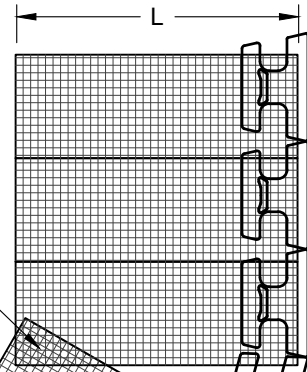


**GEOGRID LAYOUT STEPS 1-3**

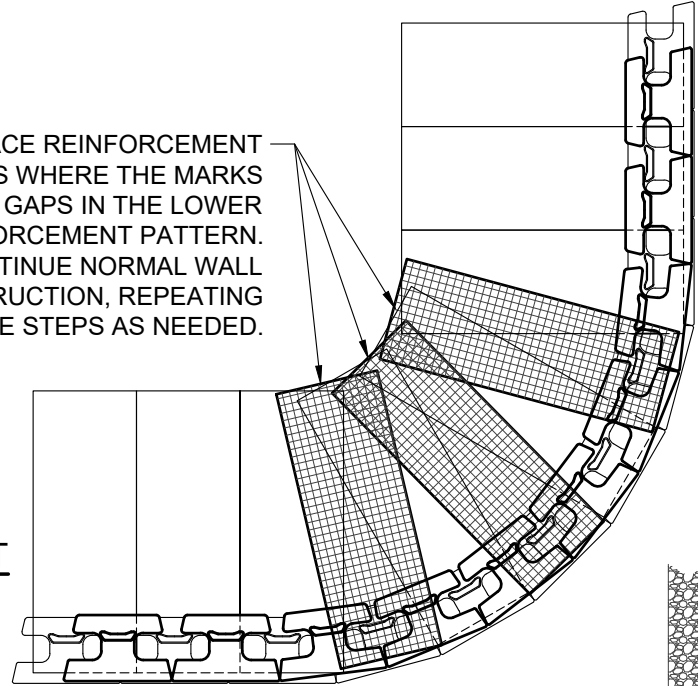
**STEP 1 - PLACE REINFORCEMENT SO LITTLE OR NO OVERLAP OCCURS IN THE RADIUS AREA. IF OVERLAP OCCURS, PLACE 2 TO 3 INCHES OF SAND BETWEEN THE REINFORCEMENT LAYERS.**

2 TO 3 INCHES OF SOIL FILL REQUIRED BETWEEN OVERLAPPED REINFORCEMENT FOR PROPER SOIL AND REINFORCEMENT INTERACTION.

↑  
PRINCIPLE  
REINFORCEMENT  
DIRECTION

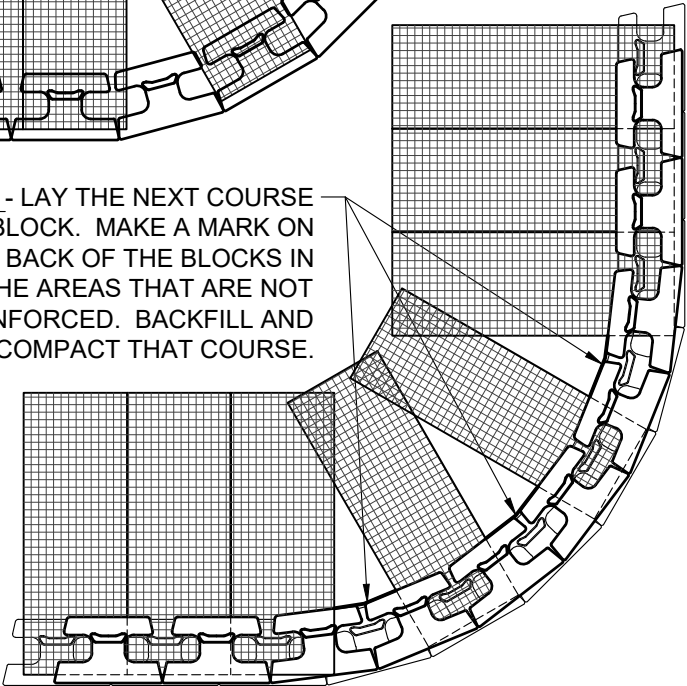


**STEP 3 - PLACE REINFORCEMENT IN THE AREAS WHERE THE MARKS SHOW GAPS IN THE LOWER REINFORCEMENT PATTERN. CONTINUE NORMAL WALL CONSTRUCTION, REPEATING THESE STEPS AS NEEDED.**



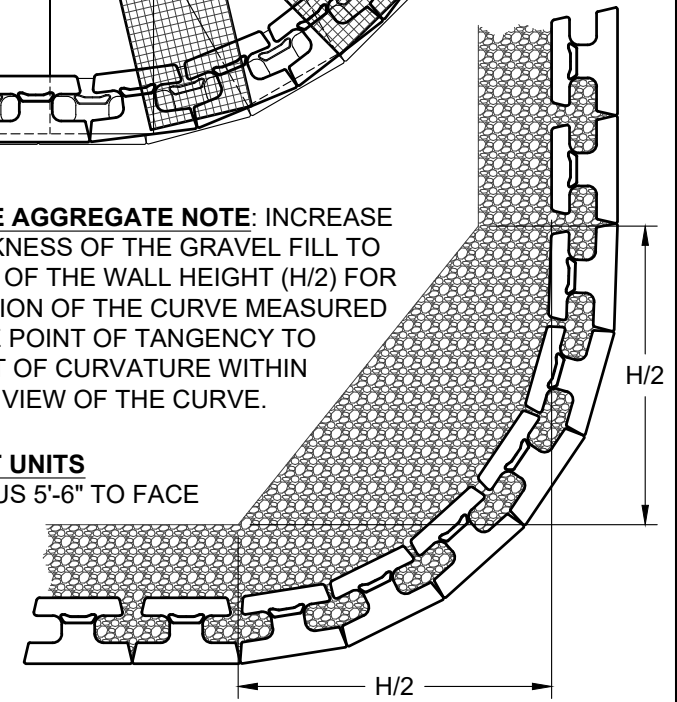
GEOGRID LAYOUT

**STEP 2 - LAY THE NEXT COURSE OF BLOCK. MAKE A MARK ON THE BACK OF THE BLOCKS IN THE AREAS THAT ARE NOT REINFORCED. BACKFILL AND COMPACT THAT COURSE.**



**DRAINAGE AGGREGATE NOTE: INCREASE THE THICKNESS OF THE GRAVEL FILL TO ONE HALF OF THE WALL HEIGHT (H/2) FOR THE PORTION OF THE CURVE MEASURED FROM THE POINT OF TANGENCY TO THE POINT OF CURVATURE WITHIN THE PLAN VIEW OF THE CURVE.**

**STRAIGHT UNITS**  
MIN. RADIUS 5'-6" TO FACE



BLOCK/AGGREGATE LAYOUT



This drawing is for illustrative purposes only and should not be used for construction without the signature of a registered professional engineer.

www.anchordiamond.com

© 2026 ANCHOR Engineering, LLC®  
and © 2026 ANCHOR DIAMOND Group. All rights reserved

**Vertica® Retaining Wall System**  
**TYPICAL DETAIL OUTSIDE CURVES**

Scale: 3/8" = 1'-0"	Drawn by: MAH
Date: 6/3/2026	Drawing number: VT27