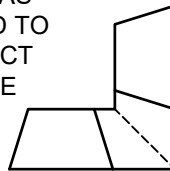
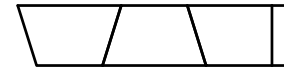


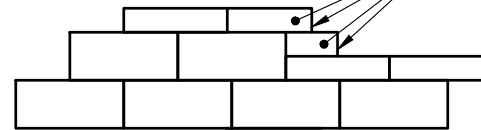
SAW CUT AS
REQUIRED TO
CONSTRUCT
90 DEGREE
MITERED
CORNER



TOP



SPLIT FACE
AND END



WALL FACE

1. ALWAYS START CAPPING WALL FROM THE LOWEST ELEVATION.
2. LAYOUT CAPS PRIOR TO USING ADHESIVE.
3. CUT CAPS TO FIT. VARIOUS COMBINATIONS OF LONG AND SHORT CAP FACES WILL BE NECESSARY FOR RADII GREATER THAN THE MINIMUM.
4. ALTERNATE SHORT AND LONG CAP FACES EVERY OTHER CAP TO ACHIEVE A STRAIGHT ROW OF CAPS.
5. USE EXTERIOR-GRADE CONSTRUCTION ADHESIVE TO SECURE CAPS.



This drawing is for illustrative purposes only and should not be used for construction without the signature of a registered professional engineer.

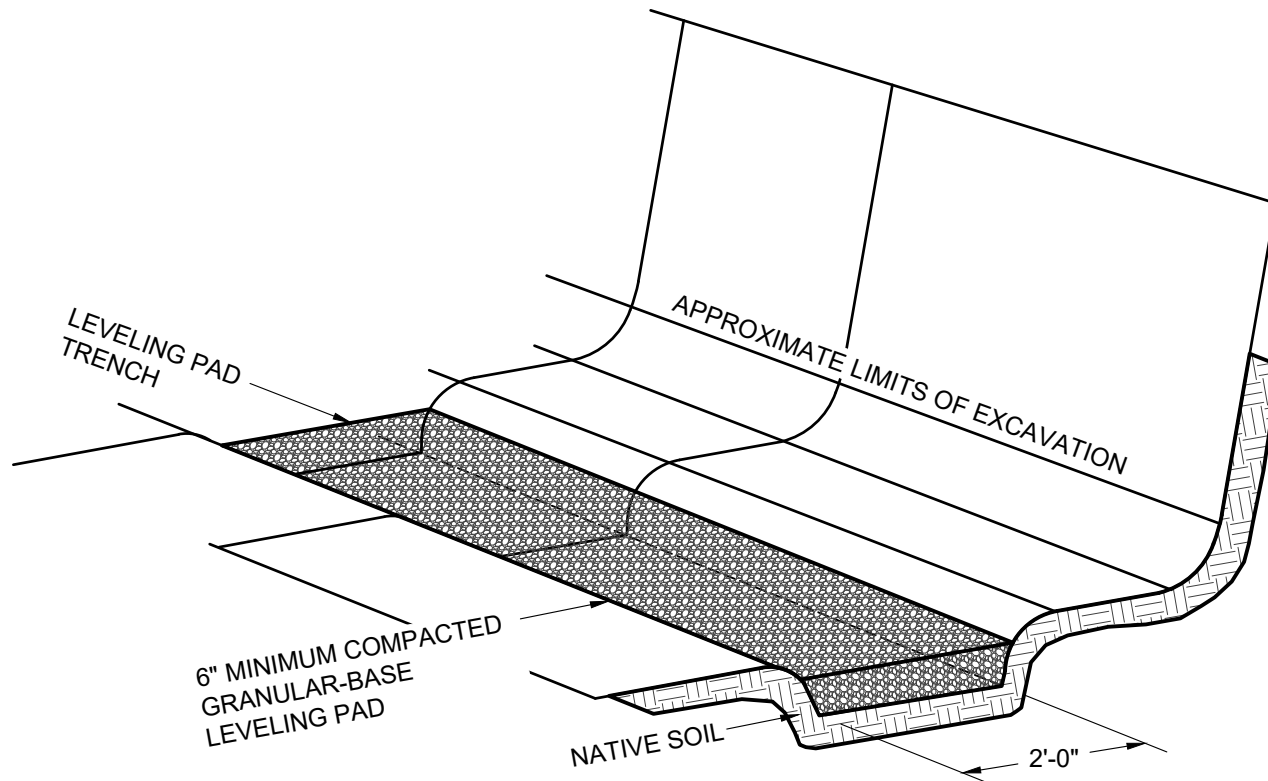
www.anchordiamond.com

© 2026 ANCHOR Engineering, LLC®
and © 2026 ANCHOR DIAMOND Group. All rights reserved

Vertica® Retaining Wall System

TYPICAL CAPPING DETAILS

Scale:	NONE	Drawn by:	MAH
Date:	6/3/2026	Drawing number:	VT01



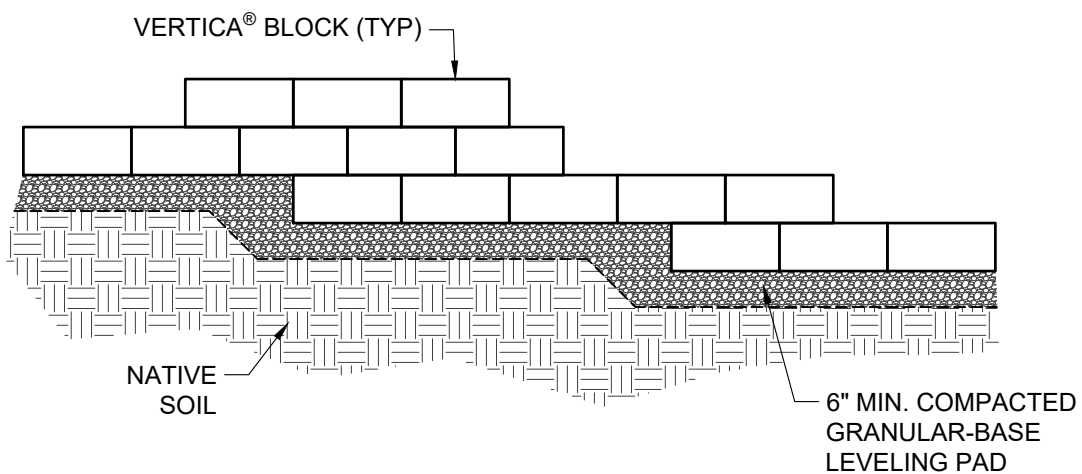
This drawing is for illustrative purposes only and should not be used for construction without the signature of a registered professional engineer.

www.anchordiamond.com

© 2026 ANCHOR Engineering, LLC®
and © 2026 ANCHOR DIAMOND Group. All rights reserved

Vertica® Retaining Wall System TYPICAL BASE PREPARATION

Scale:	NONE	Drawn by:	MAH
Date:	6/3/2026	Drawing number:	VT02



This drawing is for illustrative purposes only and should not be used for construction without the signature of a registered professional engineer.

www.anchordiamond.com

© 2026 ANCHOR Engineering, LLC®
and © 2026 ANCHOR DIAMOND Group. All rights reserved

Vertica® Retaining Wall System

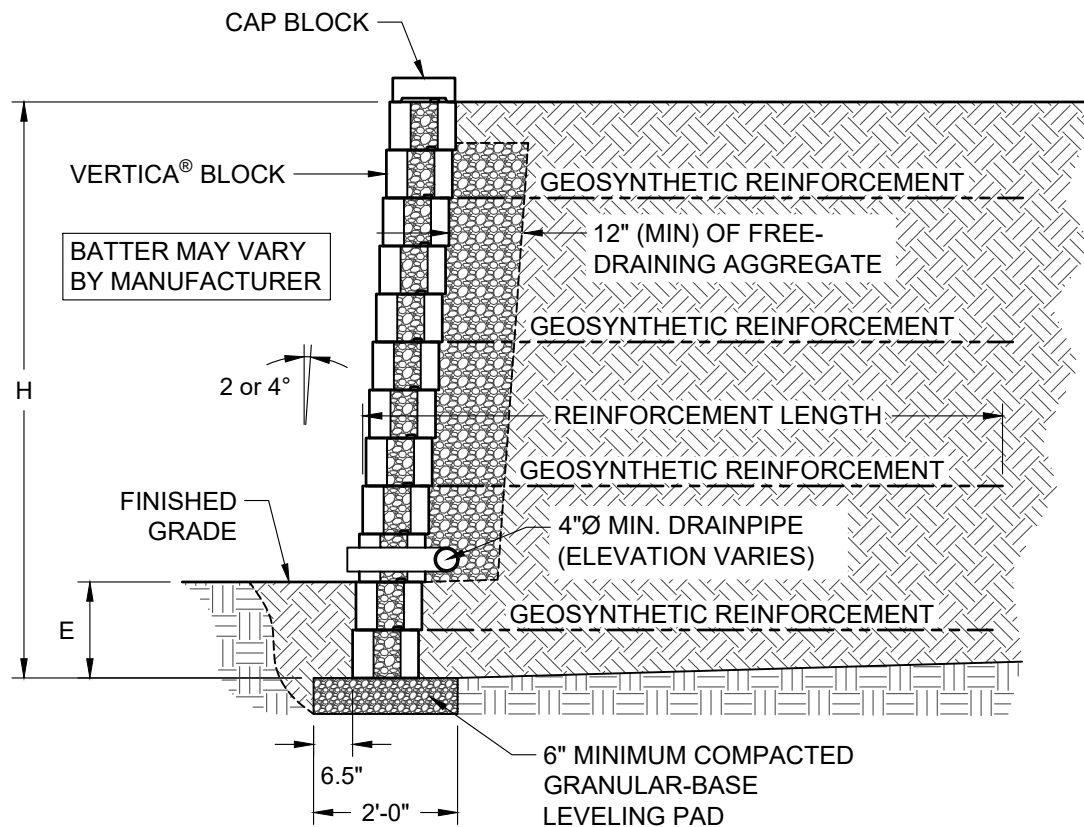
TYPICAL BASE STEP-UP

Scale:
3/8" = 1'-0"

Drawn by:
MAH

Date:
6/3/2026

Drawing number:
VT03



This drawing is for illustrative purposes only and should not be used for construction without the signature of a registered professional engineer.

www.anchordiamond.com

© 2026 ANCHOR Engineering, LLC®
and © 2026 ANCHOR DIAMOND Group. All rights reserved

Vertica® Retaining Wall System

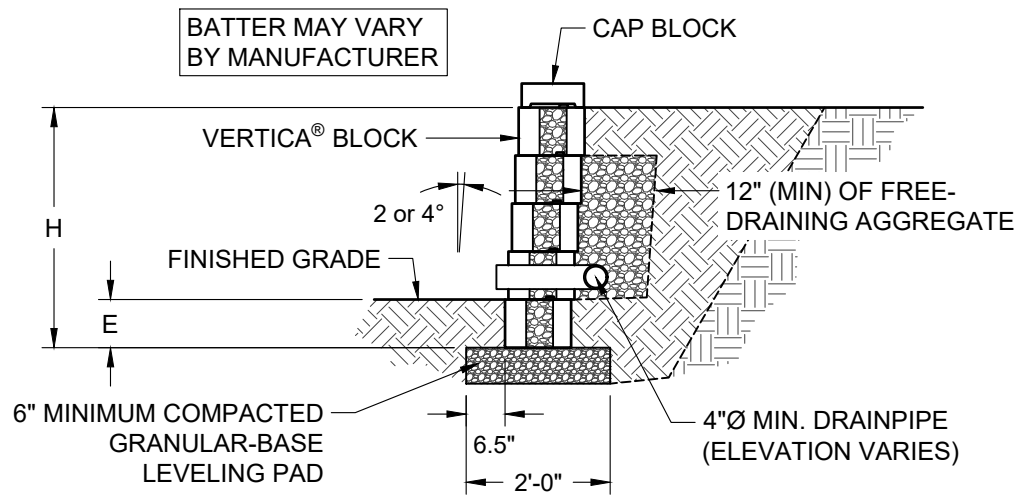
TYPICAL REINFORCED CROSS SECTION

Scale:
3/8" = 1'-0"

Drawn by:
MAH

Date:
6/3/2026

Drawing number:
VT04



This drawing is for illustrative purposes only and should not be used for construction without the signature of a registered professional engineer.

www.anchordiamond.com

© 2026 ANCHOR Engineering, LLC®
and © 2026 ANCHOR DIAMOND Group. All rights reserved

Vertica® Retaining Wall System

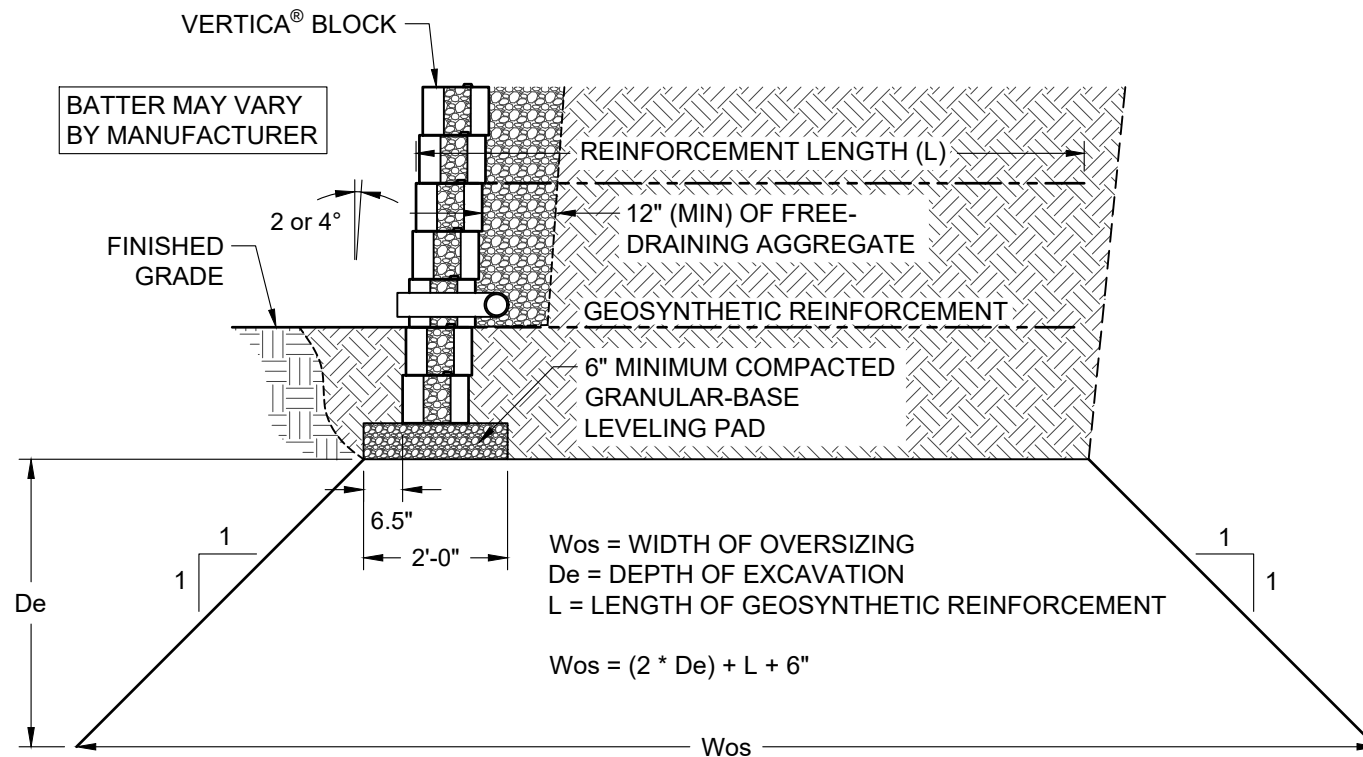
TYPICAL GRAVITY CROSS SECTION

Scale:
3/8" = 1'-0"

Drawn by:
MAH

Date:
6/3/2026

Drawing number:
VT05



**ANCHOR
DIAMOND**

This drawing is for illustrative purposes only and should not be used for construction without the signature of a registered professional engineer.

www.anchordiamond.com

© 2026 ANCHOR Engineering, LLC®
 and © 2026 ANCHOR DIAMOND Group. All rights reserved

Vertica® Retaining Wall System

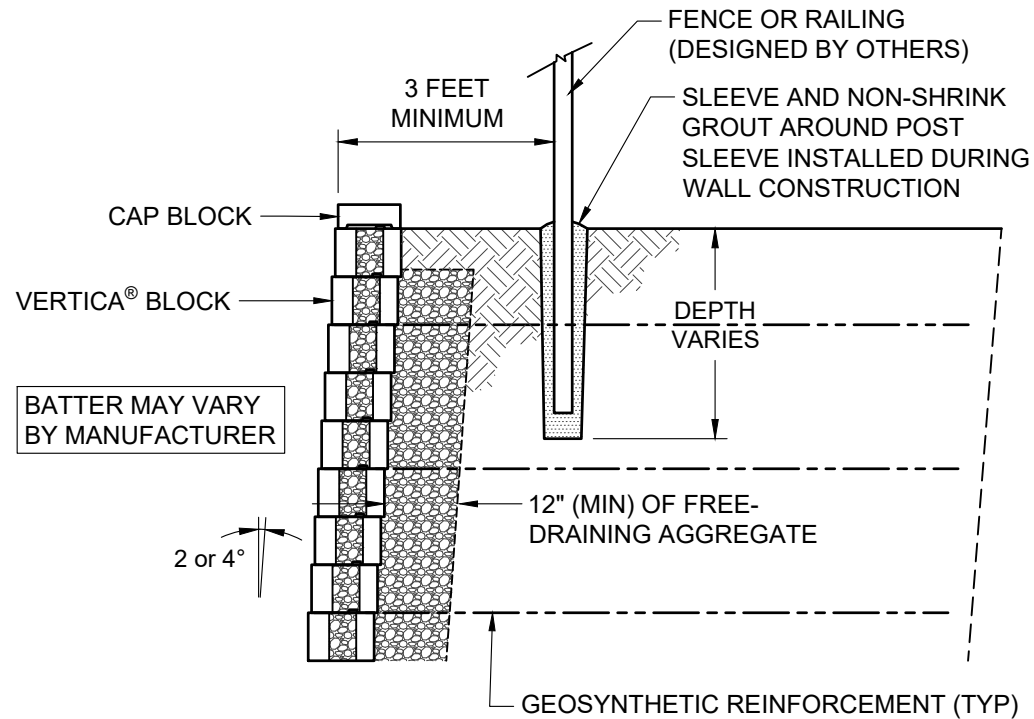
TYPICAL EXCAVATION OVERSIZING

Scale:
3/8" = 1'-0"

Drawn by:
MAH

Date:
6/3/2026

Drawing number:
VT06



This drawing is for illustrative purposes only and should not be used for construction without the signature of a registered professional engineer.

www.anchordiamond.com

© 2026 ANCHOR Engineering, LLC®
and © 2026 ANCHOR DIAMOND Group. All rights reserved

Vertica® Retaining Wall System

TYPICAL FENCE CROSS SECTION

Scale:
3/8" = 1'-0"

Drawn by:
MAH

Date:
6/3/2026

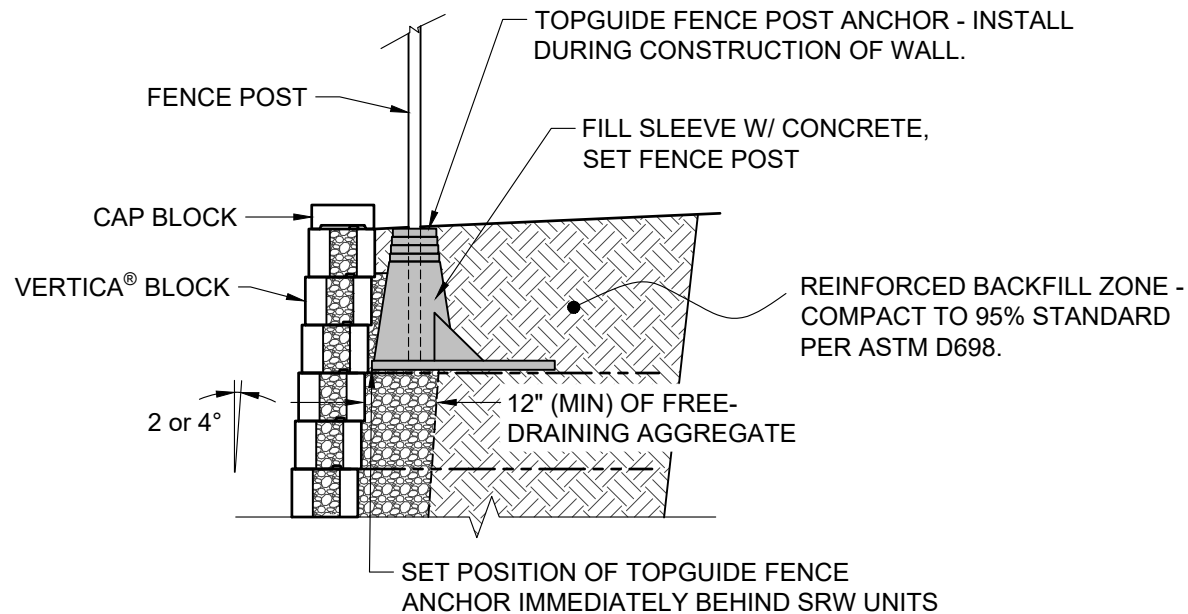
Drawing number:
VT07

NOTES:

THE USE OF TOPGUIDE IS LIMITED TO HANDRAIL AND SAFETY RAIL APPLICATIONS PER IBC 1607.8.1

THE TOPGUIDE PRODUCT SHALL BE EVENLY SPACED. USE OF THE TOPGUIDE SYSTEM IS LIMITED TO THE FOLLOWING FENCING APPLICATIONS WITHOUT CONSIDERATION OF WIND LOAD:

- 8-FOOT HIGH AND UNDER CHAIN LINK FENCES
- 6-FOOT HIGH AND UNDER WOOD FENCES WITH GAPS BETWEEN BOARDS
- 6-FOOT HIGH AND UNDER PVC, STEEL, ALUMINUM, OR WROUGHT IRON FENCES



This drawing is for illustrative purposes only and should not be used for construction without the signature of a registered professional engineer.

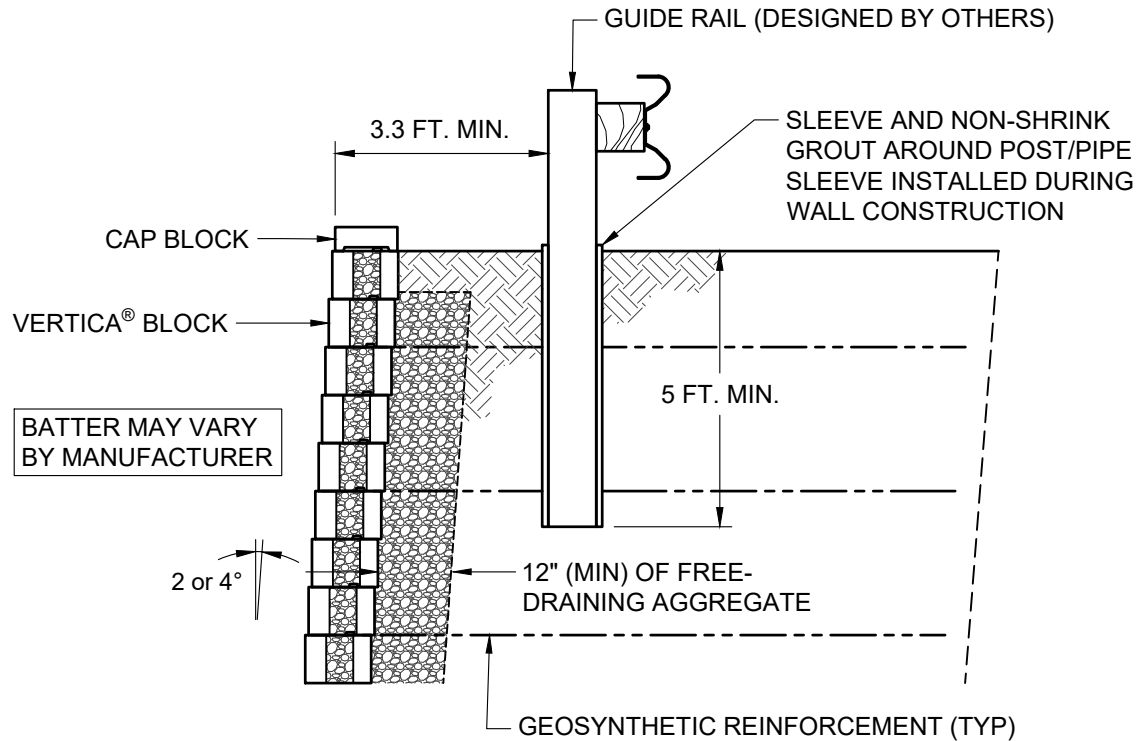
www.anchordiamond.com

© 2026 ANCHOR Engineering, LLC®
and © 2026 ANCHOR DIAMOND Group. All rights reserved

Vertica® Retaining Wall System

ALTERNATE FENCE CROSS SECTION

Scale: 3/8" = 1'-0"	Drawn by: MAH
Date: 6/3/2026	Drawing number: VT08



This drawing is for illustrative purposes only and should not be used for construction without the signature of a registered professional engineer.

www.anchordiamond.com

© 2026 ANCHOR Engineering, LLC®
and © 2026 ANCHOR DIAMOND Group. All rights reserved

Vertica® Retaining Wall System

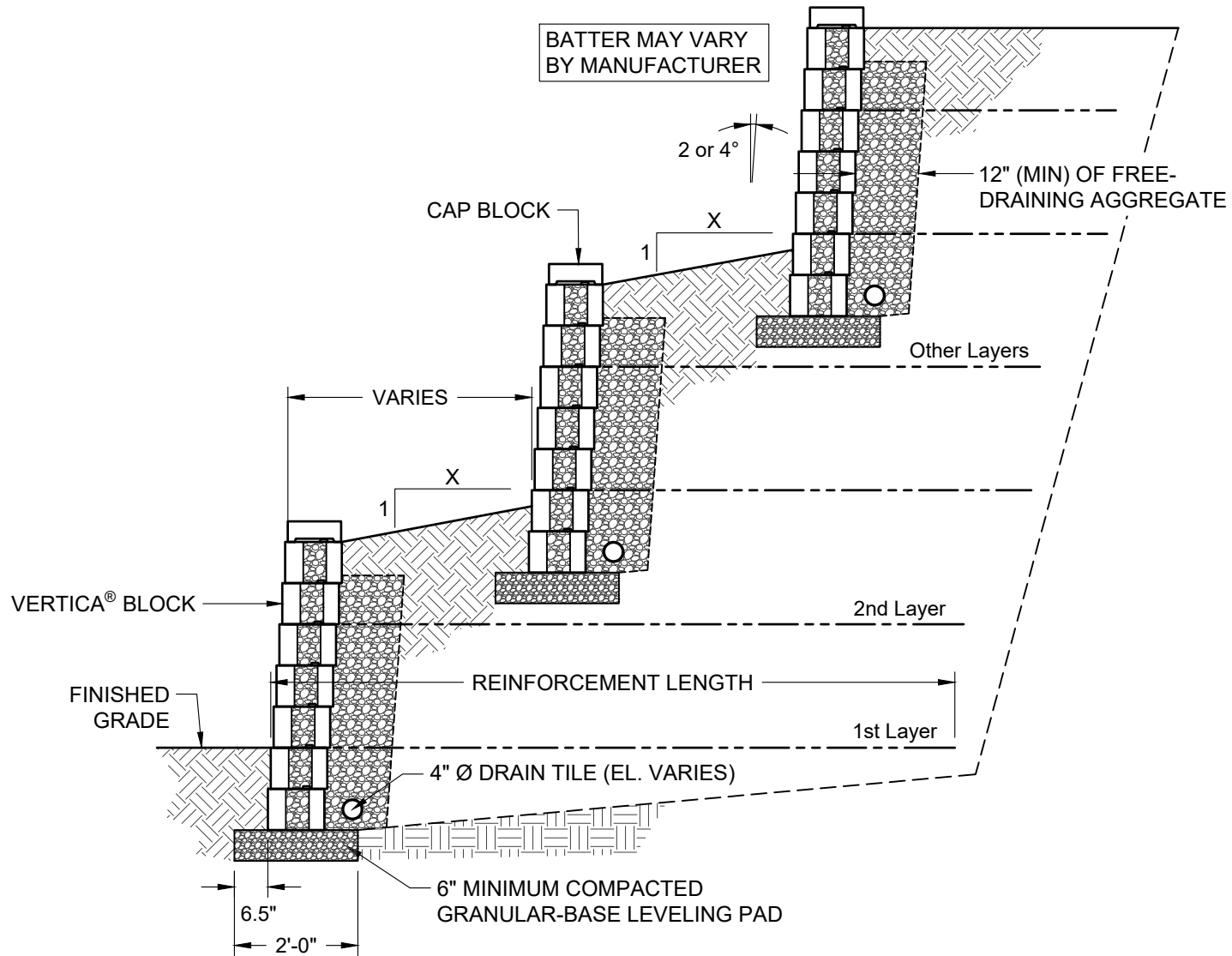
TYPICAL GUIDE RAIL CROSS SECTION

Scale:
3/8" = 1'-0"

Drawn by:
MAH

Date:
6/3/2026

Drawing number:
VT09



This drawing is for illustrative purposes only and should not be used for construction without the signature of a registered professional engineer.

www.anchordiamond.com

© 2026 ANCHOR Engineering, LLC®
and © 2026 ANCHOR DIAMOND Group. All rights reserved

Vertica® Retaining Wall System

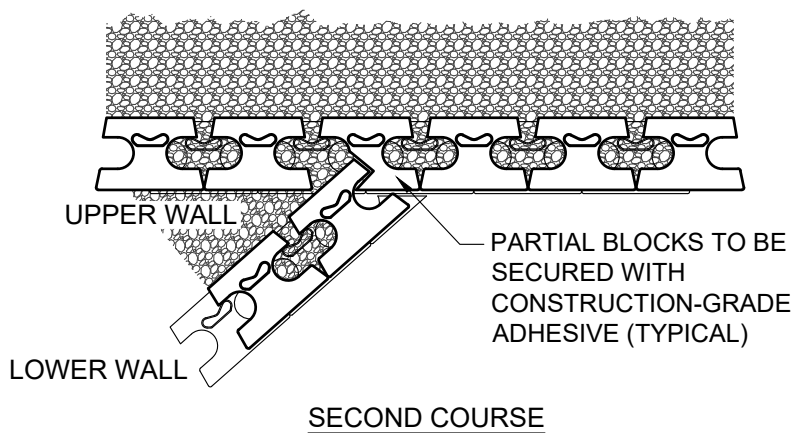
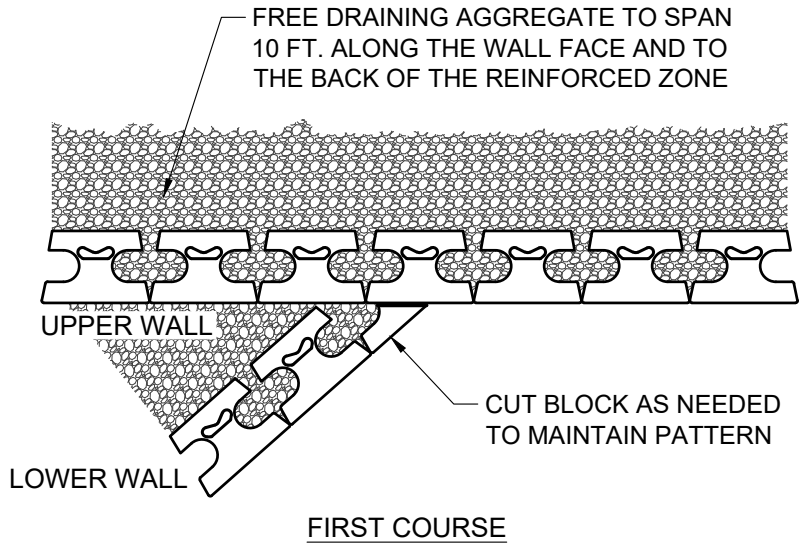
TYPICAL TERRACED CROSS SECTION

Scale:
3/8" = 1'-0"

Drawn by:
MAH

Date:
6/3/2026

Drawing number:
VT10



This drawing is for illustrative purposes only and should not be used for construction without the signature of a registered professional engineer.

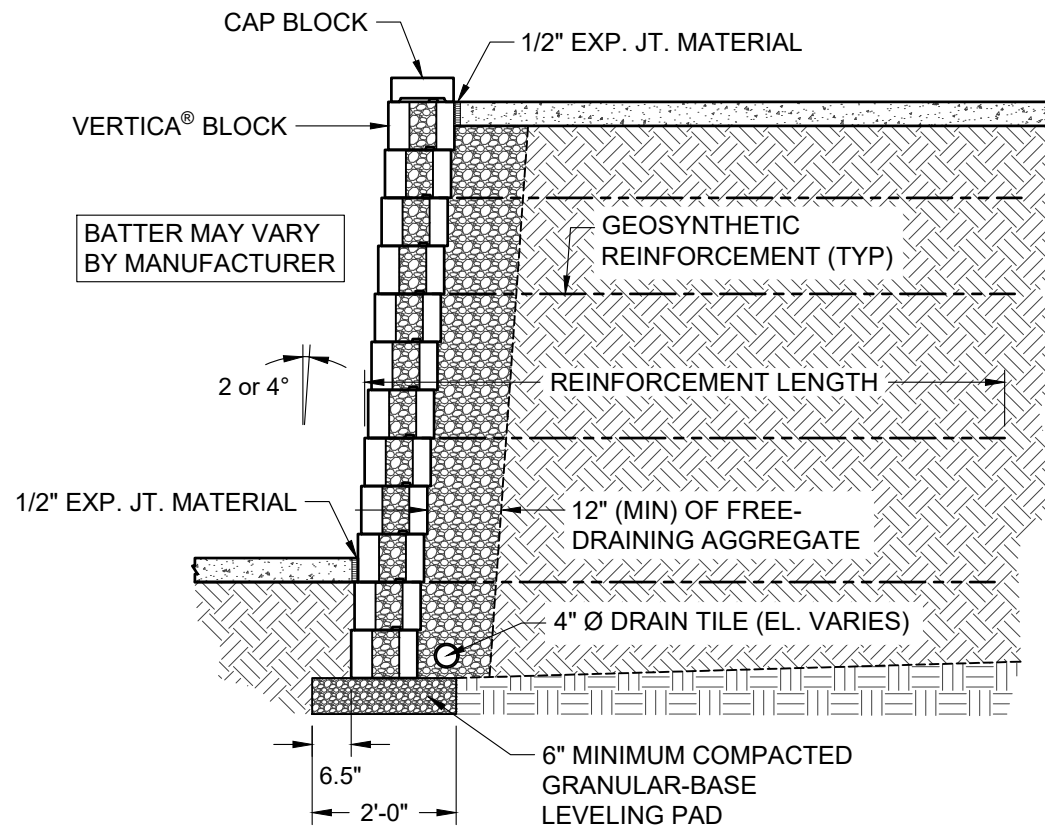
www.anchordiamond.com

© 2026 ANCHOR Engineering, LLC®
and © 2026 ANCHOR DIAMOND Group. All rights reserved

Vertica® Retaining Wall System

TYPICAL TERRACE CONNECTION

Scale: 3/8" = 1'-0"	Drawn by: MAH
Date: 6/3/2026	Drawing number: VT11



This drawing is for illustrative purposes only and should not be used for construction without the signature of a registered professional engineer.

www.anchordiamond.com

© 2026 ANCHOR Engineering, LLC®
 and © 2026 ANCHOR DIAMOND Group. All rights reserved

Vertica® Retaining Wall System

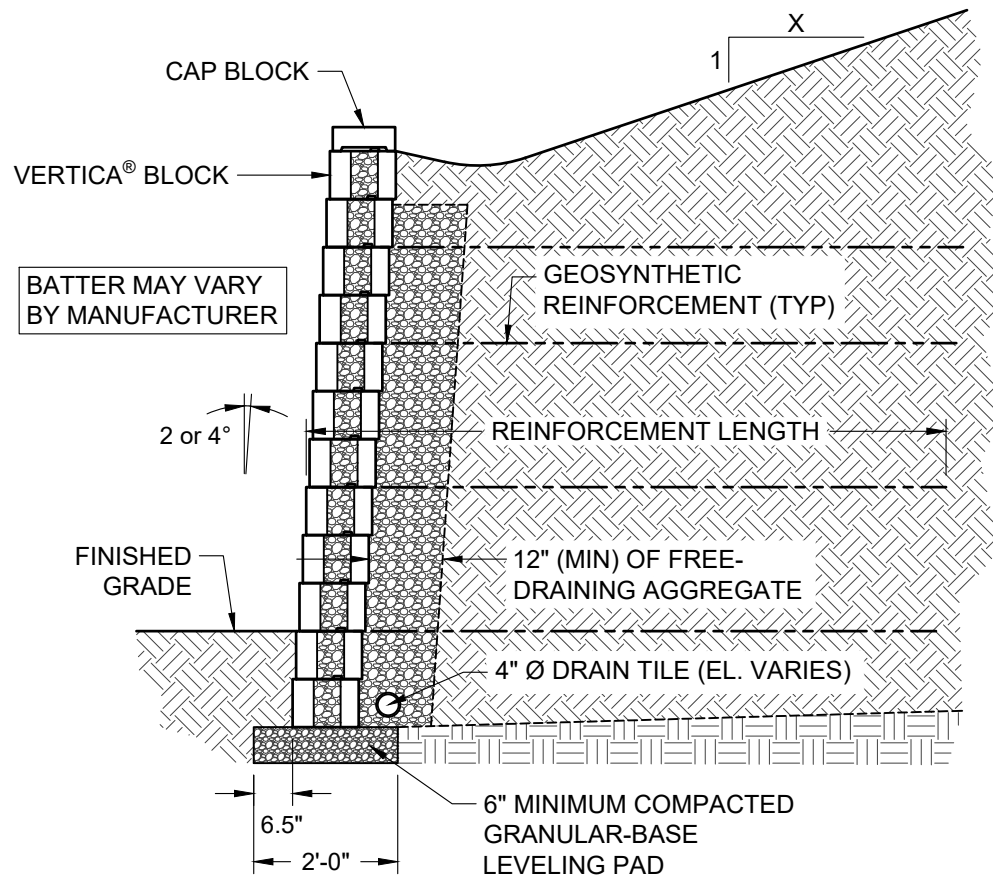
TYPICAL CROSS SECTION WITH SIDEWALK

Scale:
 3/8" = 1'-0"

Drawn by:
 MAH

Date:
 6/3/2026

Drawing number:
 VT12



**ANCHOR
DIAMOND**

This drawing is for illustrative purposes only and should not be used for construction without the signature of a registered professional engineer.

www.anchordiamond.com

© 2026 ANCHOR Engineering, LLC®
and © 2026 ANCHOR DIAMOND Group. All rights reserved

Vertica® Retaining Wall System

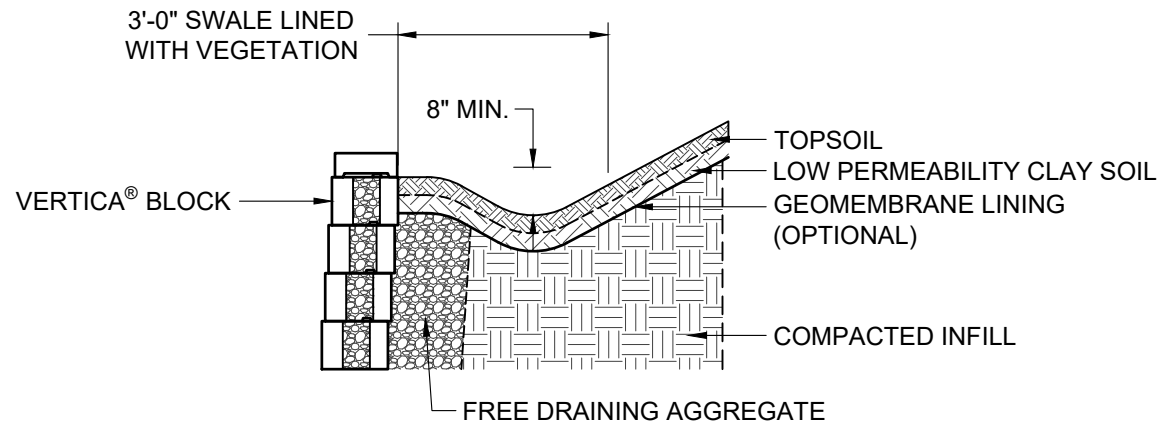
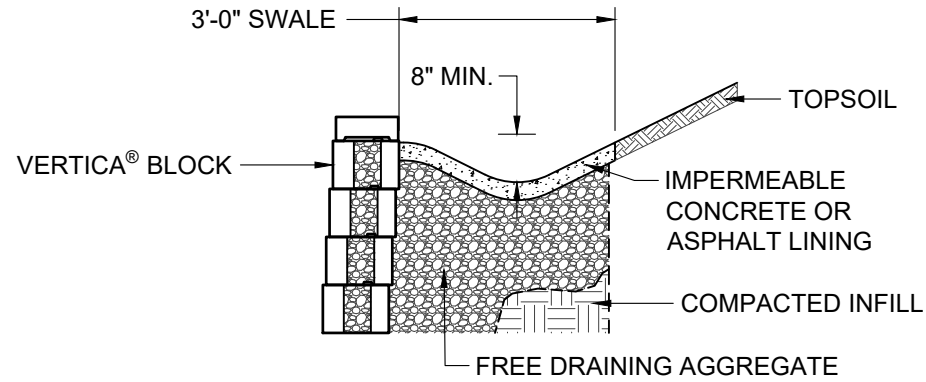
TYPICAL CROSS SECTION WITH CREST SLOPE

Scale:
3/8" = 1'-0"

Drawn by:
MAH

Date:
6/3/2026

Drawing number:
VT13



REFERENCE THE CMHA DESIGN MANUAL FOR ADDITIONAL DETAILS



**ANCHOR
DIAMOND**

This drawing is for illustrative purposes only and should not be used for construction without the signature of a registered professional engineer.

www.anchordiamond.com

© 2026 ANCHOR Engineering, LLC®
and © 2026 ANCHOR DIAMOND Group. All rights reserved

Vertica® Retaining Wall System

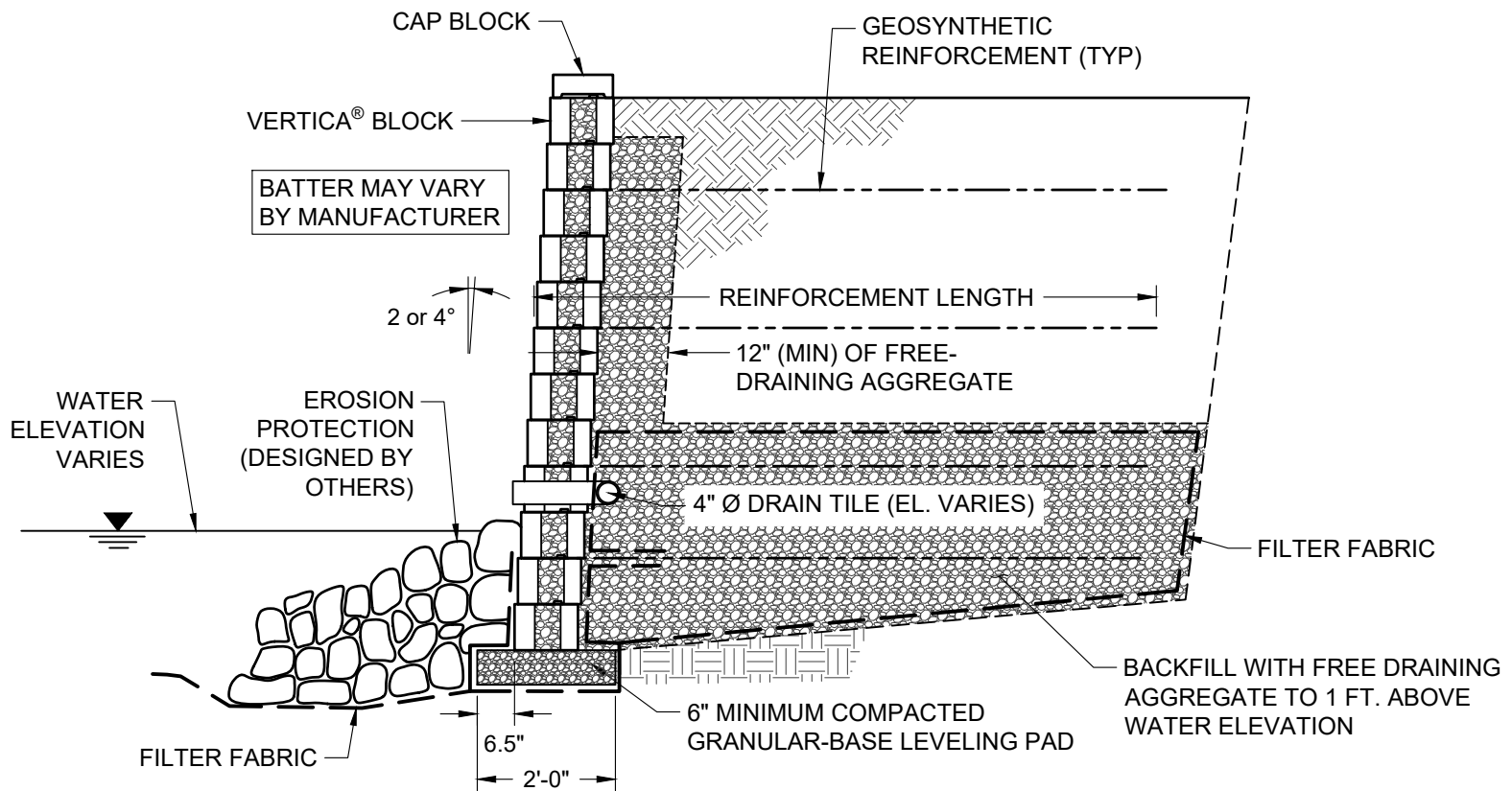
TYPICAL DRAINAGE SWALE CROSS SECTIONS

Scale:
3/8" = 1'-0"

Drawn by:
MAH

Date:
6/3/2026

Drawing number:
VT14



This drawing is for illustrative purposes only and should not be used for construction without the signature of a registered professional engineer.

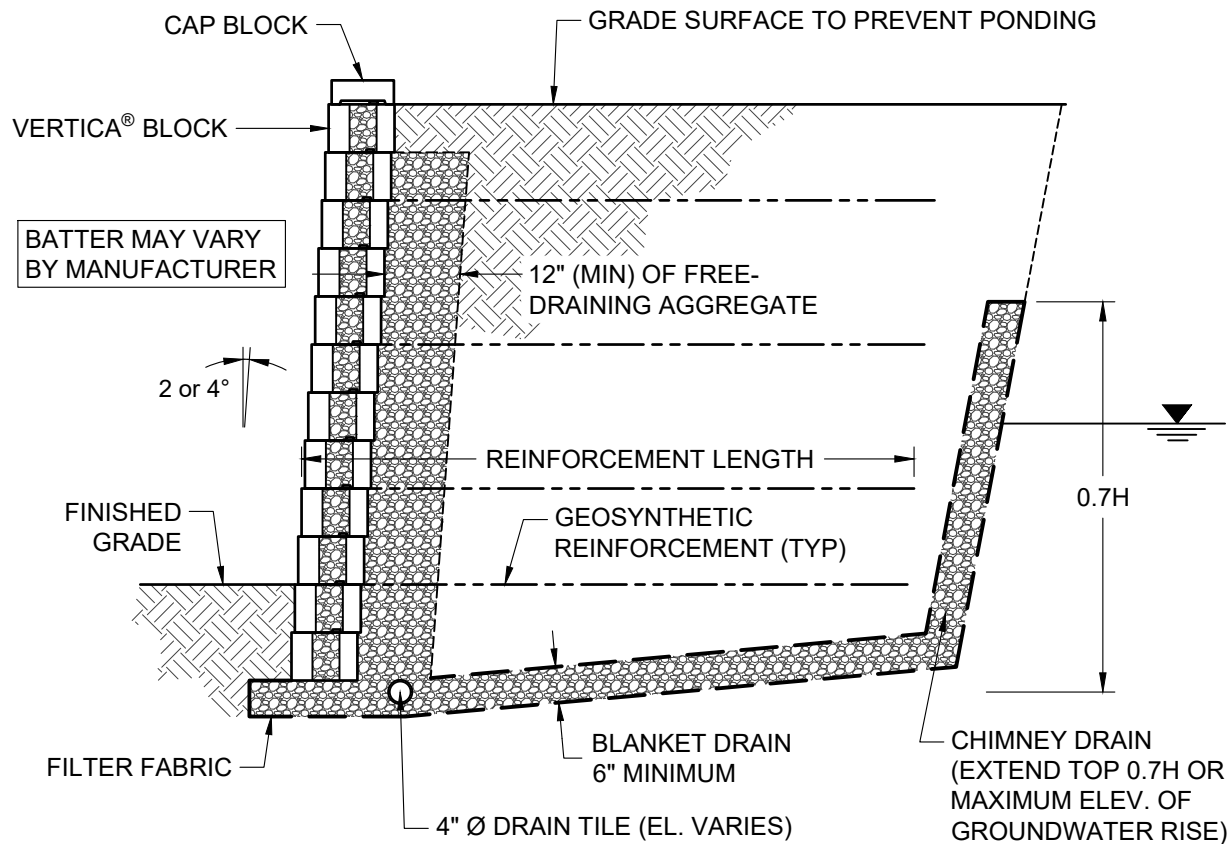
www.anchordiamond.com

© 2026 ANCHOR Engineering, LLC®
and © 2026 ANCHOR DIAMOND Group. All rights reserved

Vertica® Retaining Wall System

TYPICAL SHORELINE CROSS SECTION

Scale: 3/8" = 1'-0"	Drawn by: MAH
Date: 6/3/2026	Drawing number: VT15



ANCHOR
DIAMOND

This drawing is for illustrative purposes only and should not be used for construction without the signature of a registered professional engineer.

www.anchordiamond.com

© 2026 ANCHOR Engineering, LLC®
and © 2026 ANCHOR DIAMOND Group. All rights reserved

Vertica® Retaining Wall System

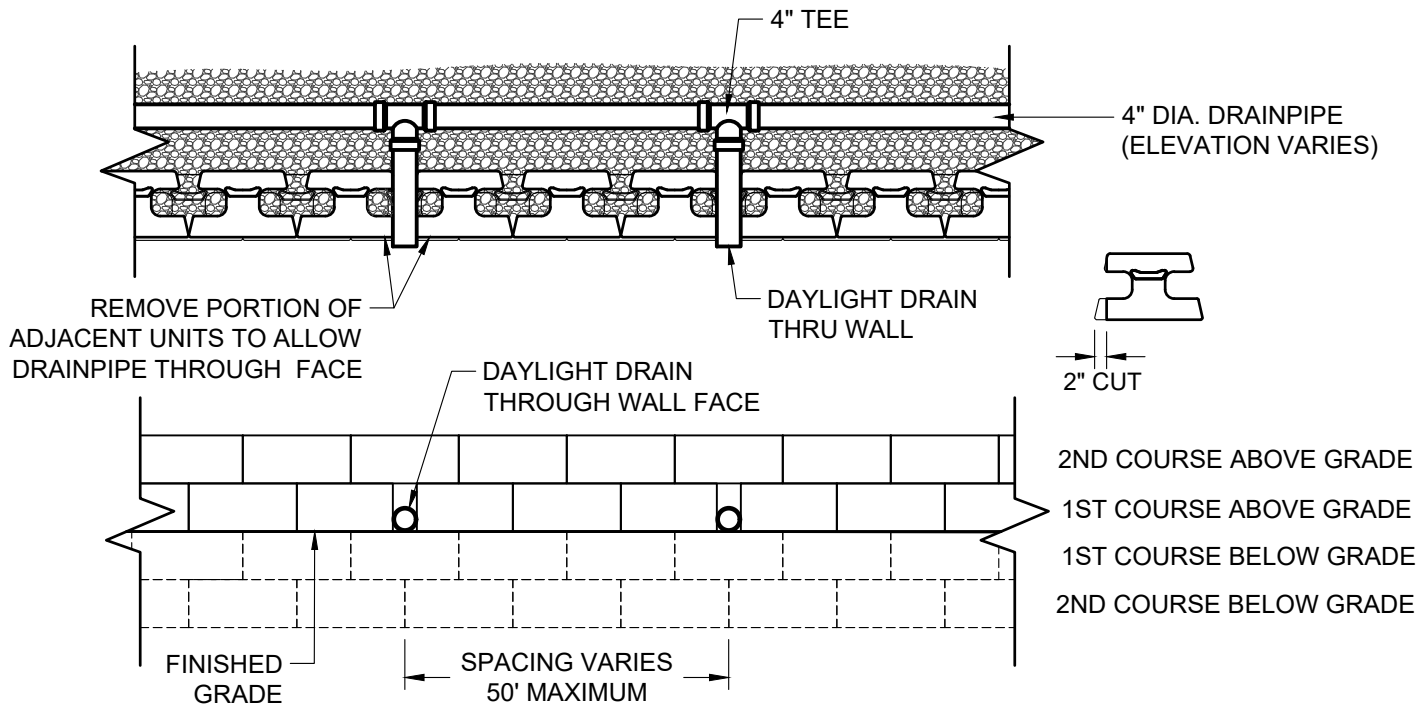
TYPICAL GROUNDWATER INTRUSION CROSS SECTION

Scale:
3/8" = 1'-0"

Drawn by:
MAH

Date:
6/3/2026

Drawing number:
VT16



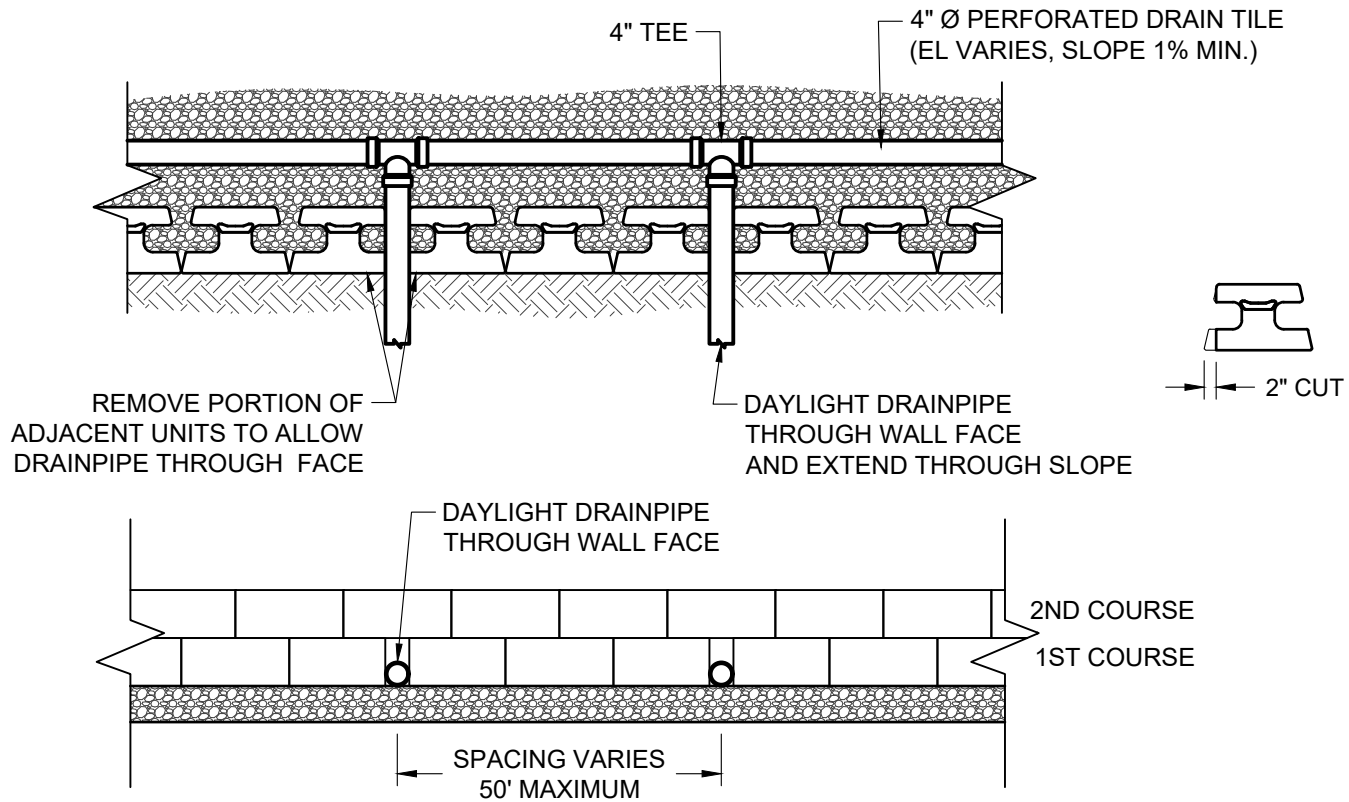
This drawing is for illustrative purposes only and should not be used for construction without the signature of a registered professional engineer.

www.anchordiamond.com
 © 2026 ANCHOR Engineering, LLC®
 and © 2026 ANCHOR DIAMOND Group. All rights reserved

Vertica® Retaining Wall System

TYPICAL DRAIN PIPE THROUGH WALL FACE

Scale: 3/8" = 1'-0"	Drawn by: MAH
Date: 6/3/2026	Drawing number: VT17



This drawing is for illustrative purposes only and should not be used for construction without the signature of a registered professional engineer.

www.anchordiamond.com

© 2026 ANCHOR Engineering, LLC®
and © 2026 ANCHOR DIAMOND Group. All rights reserved

Vertica® Retaining Wall System

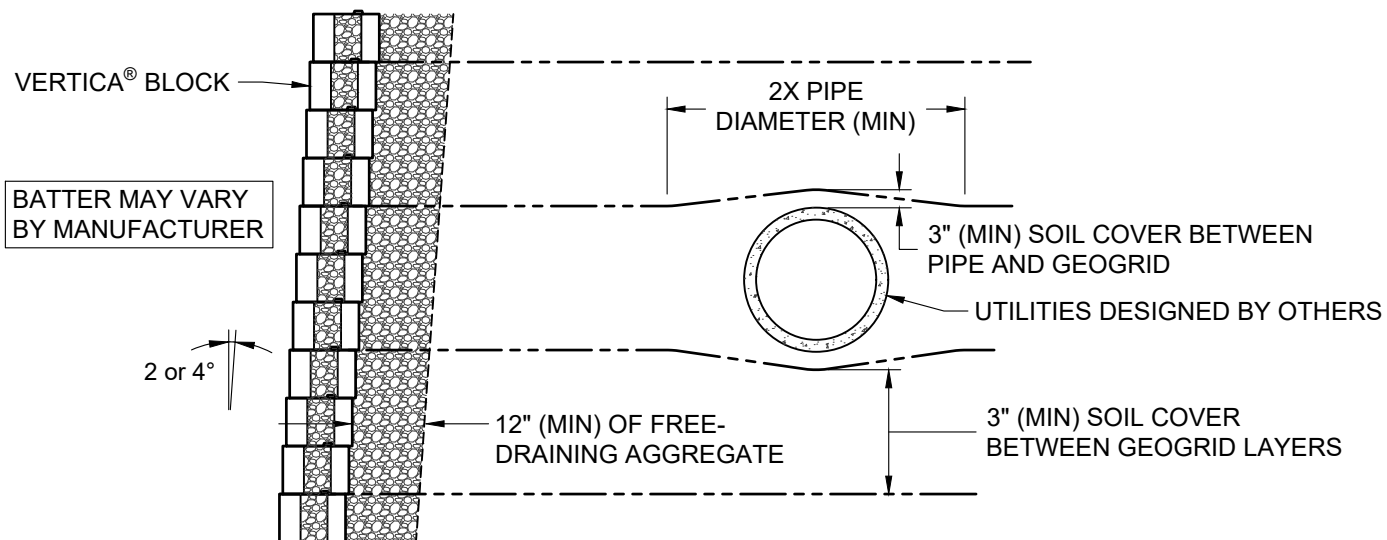
TYPICAL DRAIN PIPE THROUGH TOE SLOPE

Scale:
3/8" = 1'-0"

Drawn by:
MAH

Date:
6/3/2026

Drawing number:
VT18



**ANCHOR
DIAMOND**

This drawing is for illustrative purposes only and should not be used for construction without the signature of a registered professional engineer.

www.anchordiamond.com

© 2026 ANCHOR Engineering, LLC®
and © 2026 ANCHOR DIAMOND Group. All rights reserved

Vertica® Retaining Wall System

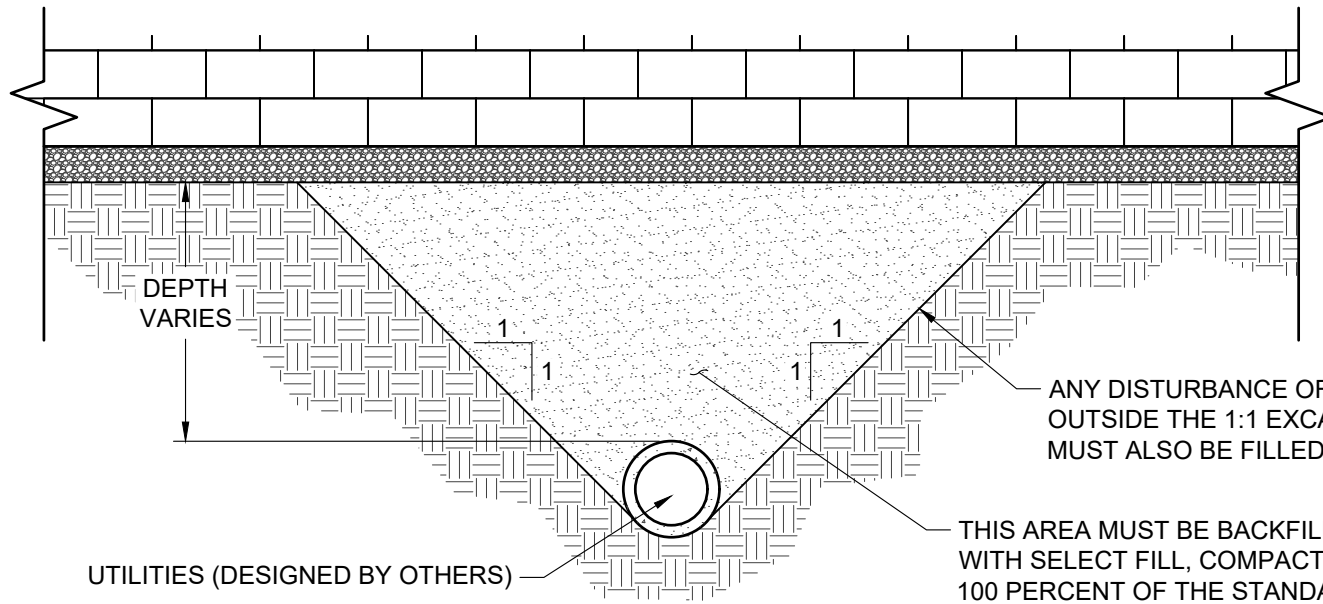
TYPICAL CROSS SECTION WITH PARALLEL UTILITIES

Scale:
3/8" = 1'-0"

Drawn by:
MAH

Date:
6/3/2026

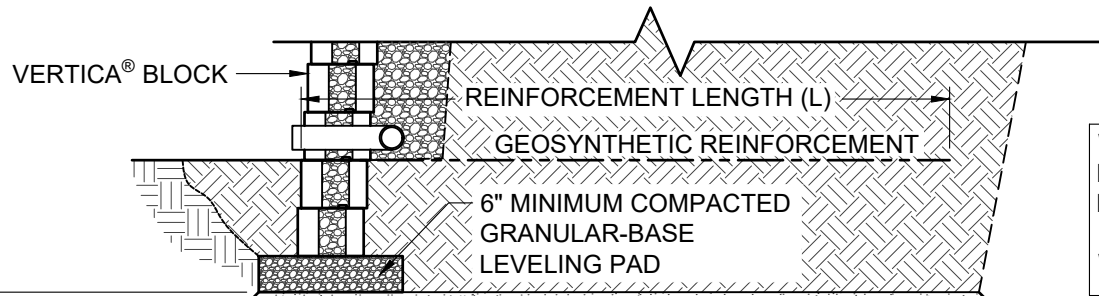
Drawing number:
VT19



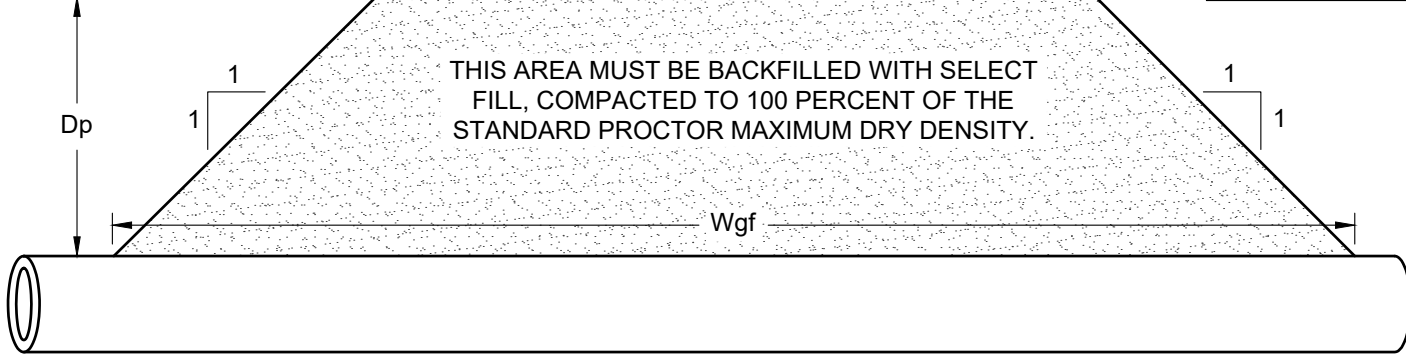
ANY DISTURBANCE OF THE SOILS OUTSIDE THE 1:1 EXCAVATION AREA MUST ALSO BE FILLED WITH SELECT FILL

THIS AREA MUST BE BACKFILLED WITH SELECT FILL, COMPACTED TO 100 PERCENT OF THE STANDARD PROCTOR MAXIMUM DRY DENSITY.

UTILITIES (DESIGNED BY OTHERS)



W_{gf} = WIDTH OF GRANULAR FILL
 D_p = DEPTH OF PIPE
 L = LENGTH OF GEOSYNTHETIC REINFORCEMENT
 $W_{gf} = (2 * D_p) + L + 6"$



THIS AREA MUST BE BACKFILLED WITH SELECT FILL, COMPACTED TO 100 PERCENT OF THE STANDARD PROCTOR MAXIMUM DRY DENSITY.



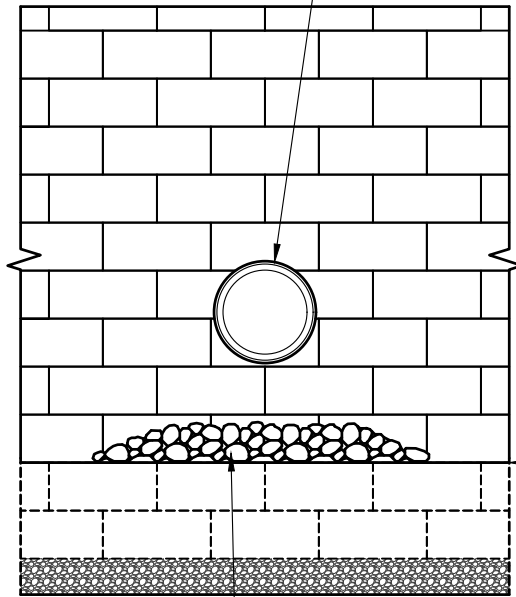
This drawing is for illustrative purposes only and should not be used for construction without the signature of a registered professional engineer.
 www.anchordiamond.com
 © 2026 ANCHOR Engineering, LLC®
 and © 2026 ANCHOR DIAMOND Group. All rights reserved

Vertica® Retaining Wall System

TYPICAL DETAILS FOR UTILITIES BELOW WALL

Scale: 3/8" = 1'-0"	Drawn by: MAH
Date: 6/3/2026	Drawing number: VT20

HAND CUT BLOCK UNITS
TO WITHIN 1/2" OF PIPE



FINISHED
GRADE

SCOUR PROTECTION AS
REQUIRED. USE RIPRAP OR
PRECAST SLAB IN OUTLET
AREA (DESIGNED BY OTHERS)

FACE VIEW

CAP BLOCK

VERTICA® BLOCK

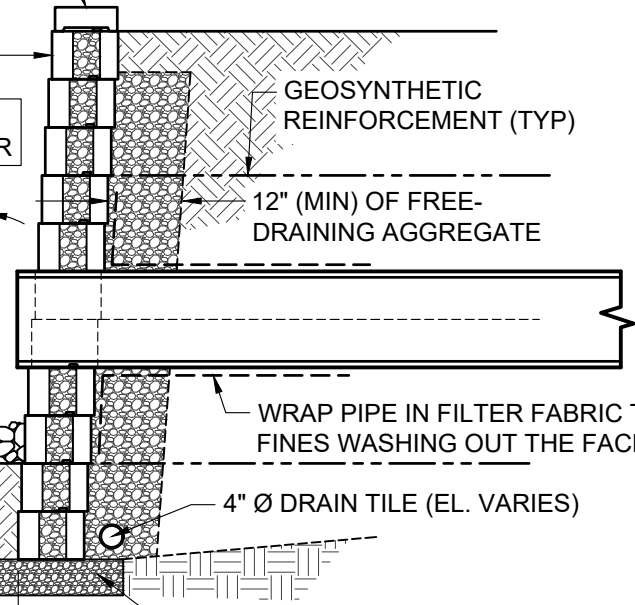
BATTER MAY VARY
BY MANUFACTURER

2 or 4°

SCOUR
PROTECTION

6.5"

2'-0"



GEOSYNTHETIC
REINFORCEMENT (TYP)

12" (MIN) OF FREE-
DRAINING AGGREGATE

WRAP PIPE IN FILTER FABRIC TO REDUCE
FINES WASHING OUT THE FACE

4" Ø DRAIN TILE (EL. VARIES)

6" MINIMUM COMPACTED
GRANULAR-BASE LEVELING PAD

SECTION VIEW



**ANCHOR
DIAMOND**

This drawing is for illustrative purposes only and should not be used for construction without the signature of a registered professional engineer.

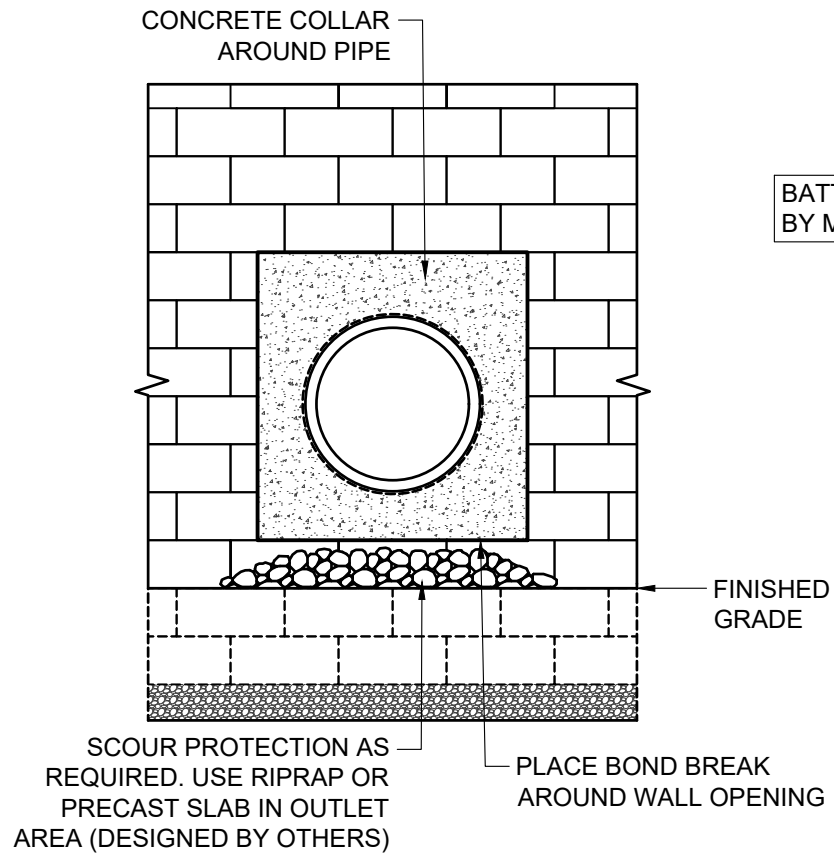
www.anchordiamond.com

© 2026 ANCHOR Engineering, LLC®
and © 2026 ANCHOR DIAMOND Group. All rights reserved

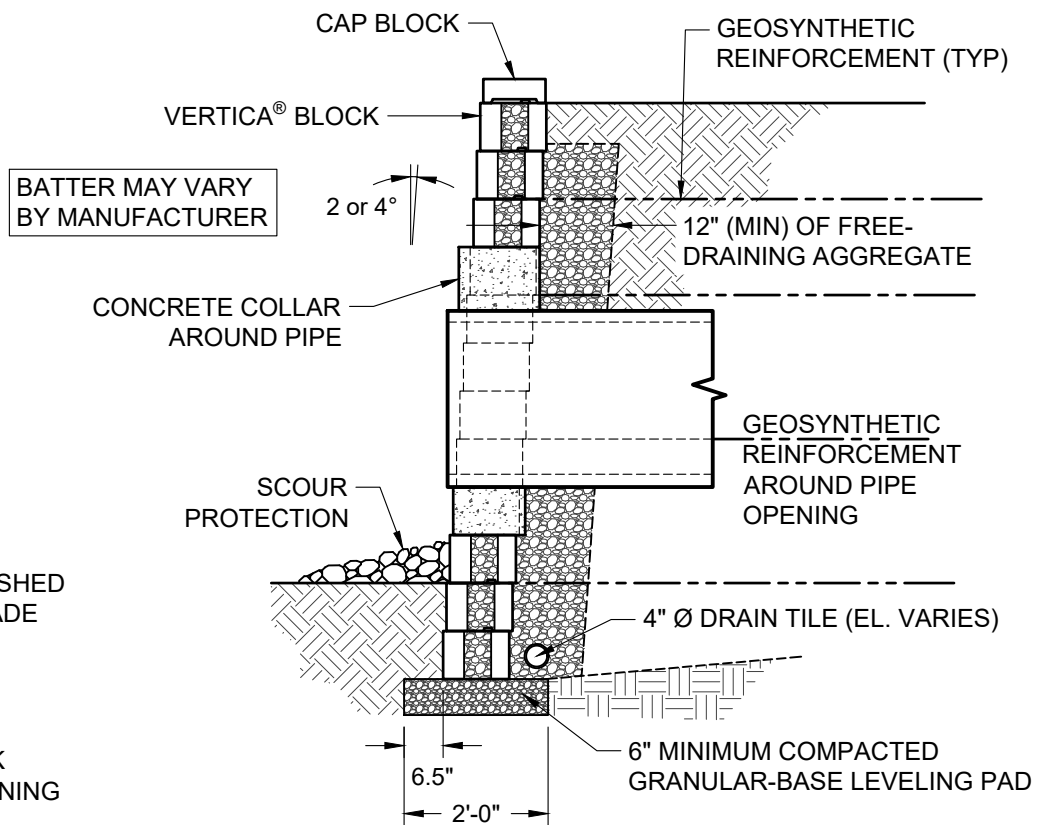
Vertica® Retaining Wall System

TYPICAL DETAILS FOR SMALL UTILITIES THROUGH WALL

Scale: 3/8" = 1'-0"	Drawn by: MAH
Date: 6/3/2026	Drawing number: VT21



FACE VIEW



SECTION VIEW



This drawing is for illustrative purposes only and should not be used for construction without the signature of a registered professional engineer.

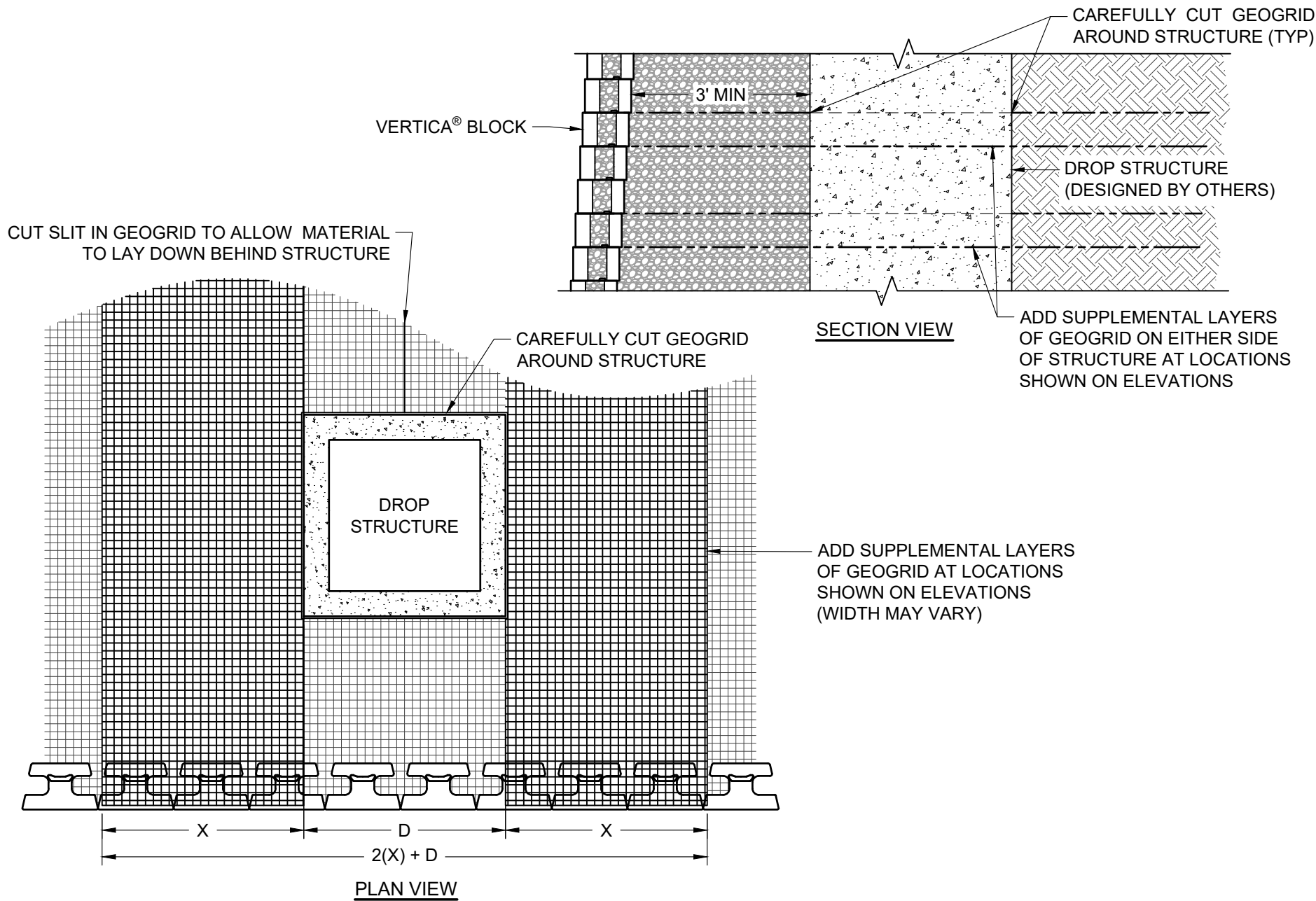
www.anchordiamond.com

© 2026 ANCHOR Engineering, LLC®
and © 2026 ANCHOR DIAMOND Group. All rights reserved

Vertica® Retaining Wall System

TYPICAL DETAILS FOR LARGE UTILITIES THROUGH WALL

Scale:	3/8" = 1'-0"	Drawn by:	MAH
Date:	6/3/2026	Drawing number:	VT22



**ANCHOR
DIAMOND**

This drawing is for illustrative purposes only and should not be used for construction without the signature of a registered professional engineer.

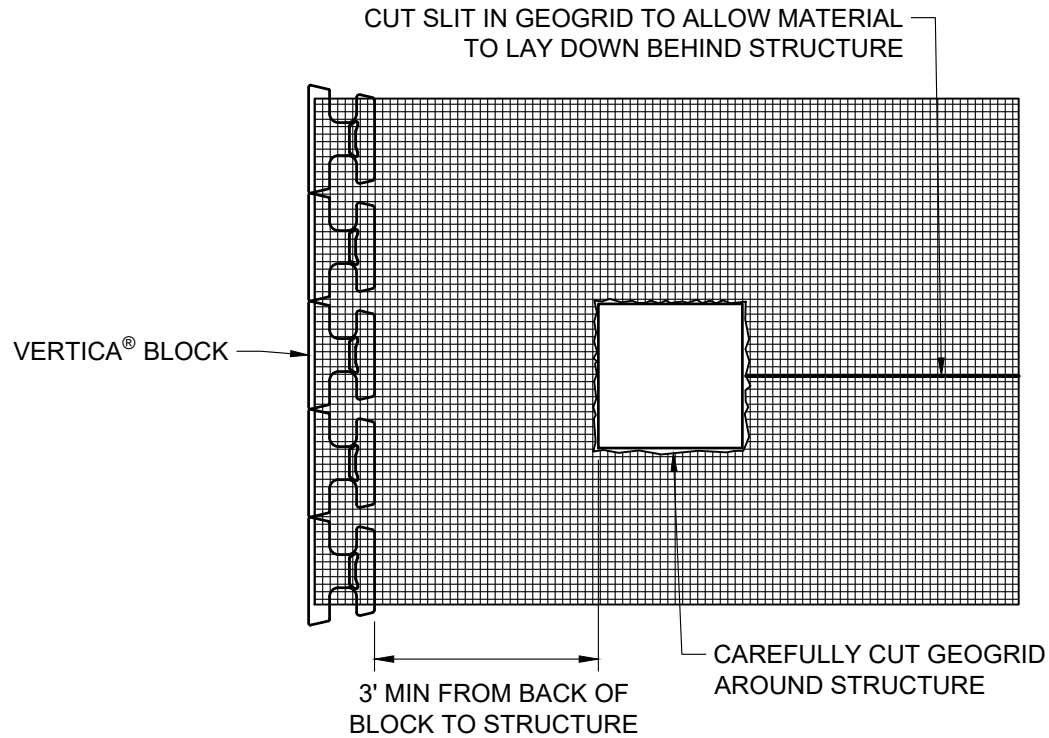
www.anchordiamond.com

© 2026 ANCHOR Engineering, LLC®
and © 2026 ANCHOR DIAMOND Group. All rights reserved

Vertica® Retaining Wall System

TYPICAL DETAILS DROP STRUCTURE BEHIND WALL

Scale: 3/8" = 1'-0"	Drawn by: MAH
Date: 6/3/2026	Drawing number: VT23



This drawing is for illustrative purposes only and should not be used for construction without the signature of a registered professional engineer.

www.anchordiamond.com

© 2026 ANCHOR Engineering, LLC®
and © 2026 ANCHOR DIAMOND Group. All rights reserved

Vertica® Retaining Wall System

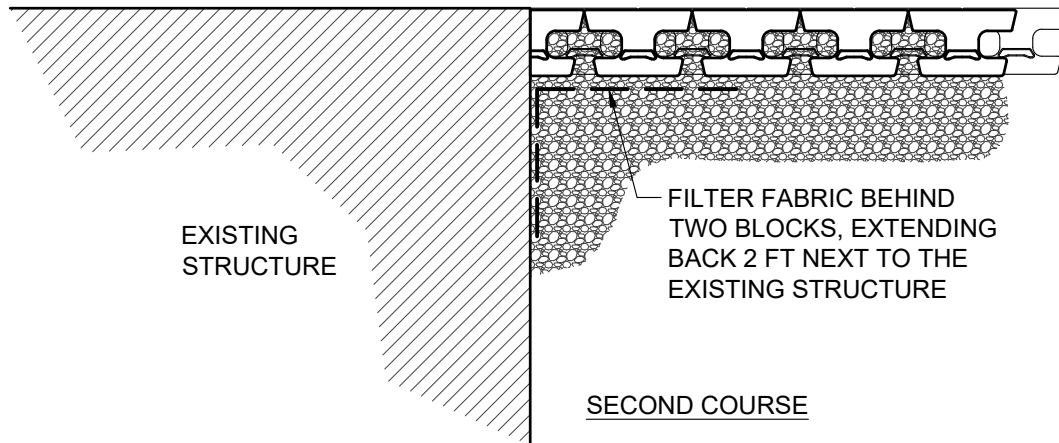
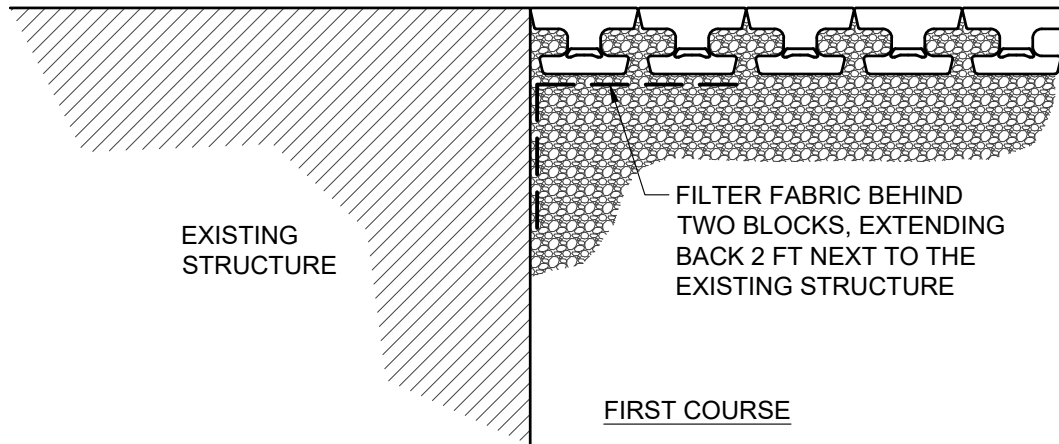
TYPICAL DETAIL ALTERNATE DROP STRUCTURE BEHIND WALL

Scale:
3/8" = 1'-0"

Drawn by:
MAH

Date:
6/3/2026

Drawing number:
VT24



**ANCHOR
DIAMOND**

This drawing is for illustrative purposes only and should not be used for construction without the signature of a registered professional engineer.

www.anchordiamond.com

© 2026 ANCHOR Engineering, LLC®
and © 2026 ANCHOR DIAMOND Group. All rights reserved

Vertica® Retaining Wall System

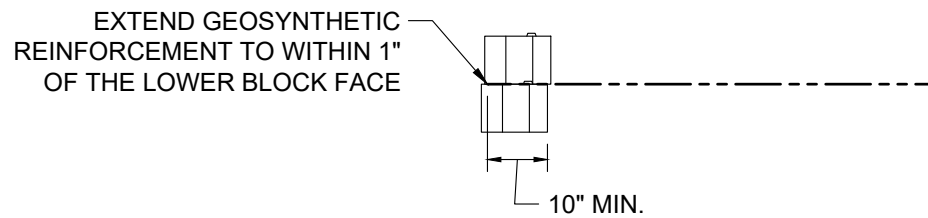
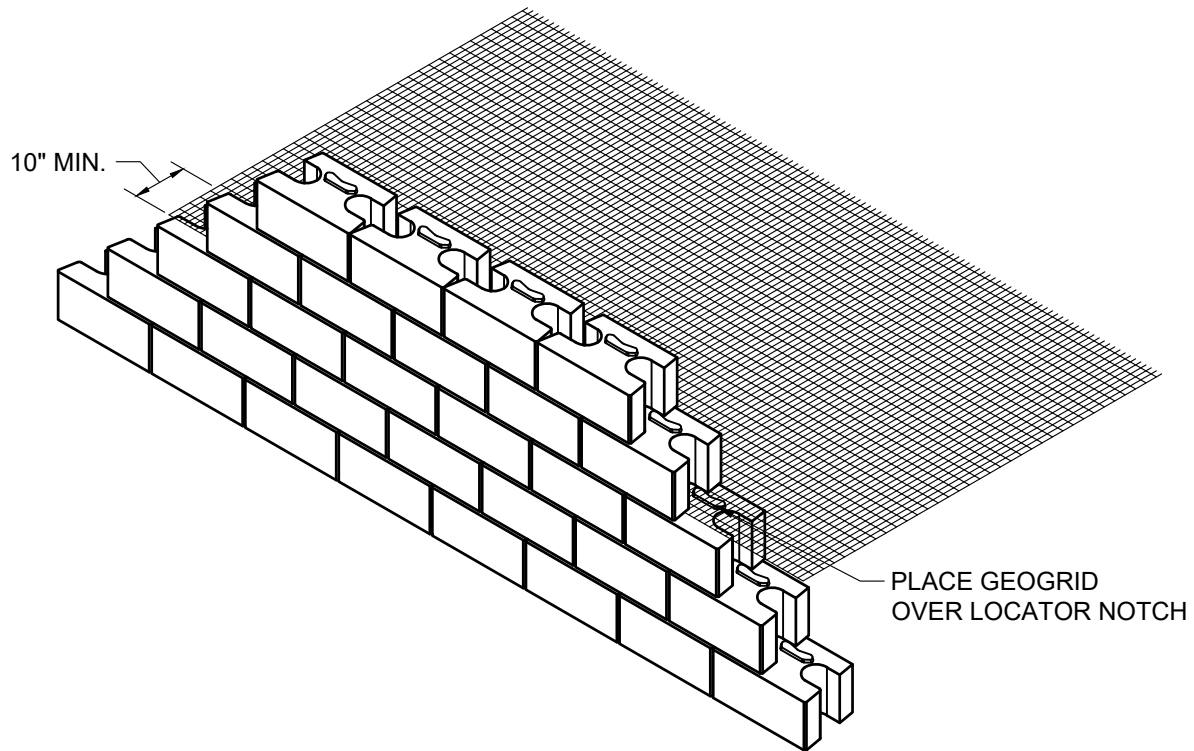
TYPICAL DETAIL WALL ABUTTING STRUCTURE

Scale:
3/8" = 1'-0"

Drawn by:
MAH

Date:
6/3/2026

Drawing number:
VT25



This drawing is for illustrative purposes only and should not be used for construction without the signature of a registered professional engineer.

www.anchordiamond.com

© 2026 ANCHOR Engineering, LLC®
and © 2026 ANCHOR DIAMOND Group. All rights reserved

Vertica® Retaining Wall System

TYPICAL REINFORCEMENT CONNECTION DETAIL

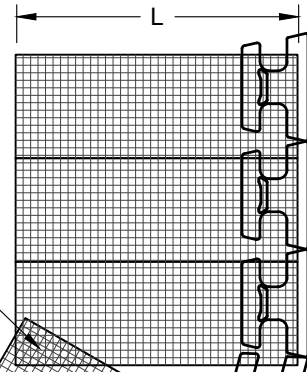
Scale:	Drawn by:
N.T.S.	MAH
Date:	Drawing number:
----	VT26

GEOGRID LAYOUT STEPS 1-3

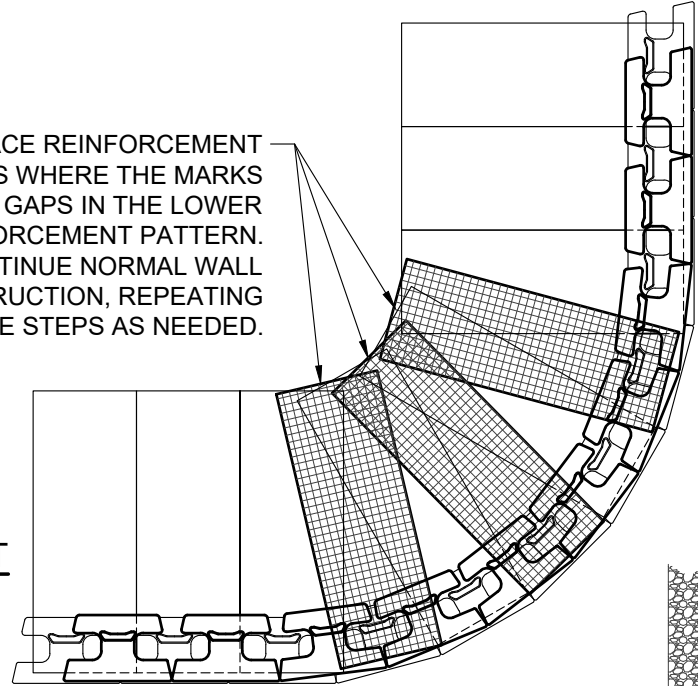
STEP 1 - PLACE REINFORCEMENT SO LITTLE OR NO OVERLAP OCCURS IN THE RADIUS AREA. IF OVERLAP OCCURS, PLACE 2 TO 3 INCHES OF SAND BETWEEN THE REINFORCEMENT LAYERS.

2 TO 3 INCHES OF SOIL FILL REQUIRED BETWEEN OVERLAPPED REINFORCEMENT FOR PROPER SOIL AND REINFORCEMENT INTERACTION.

↑
PRINCIPLE
REINFORCEMENT
DIRECTION

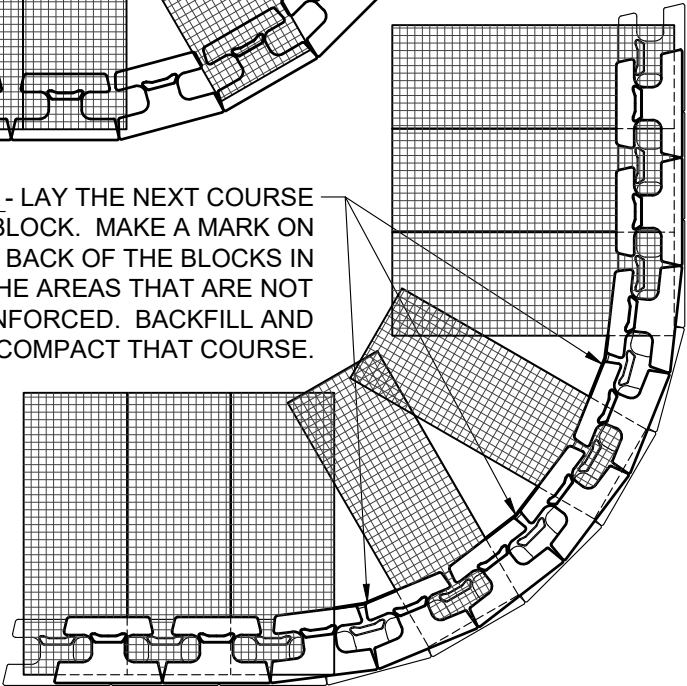


STEP 3 - PLACE REINFORCEMENT IN THE AREAS WHERE THE MARKS SHOW GAPS IN THE LOWER REINFORCEMENT PATTERN. CONTINUE NORMAL WALL CONSTRUCTION, REPEATING THESE STEPS AS NEEDED.



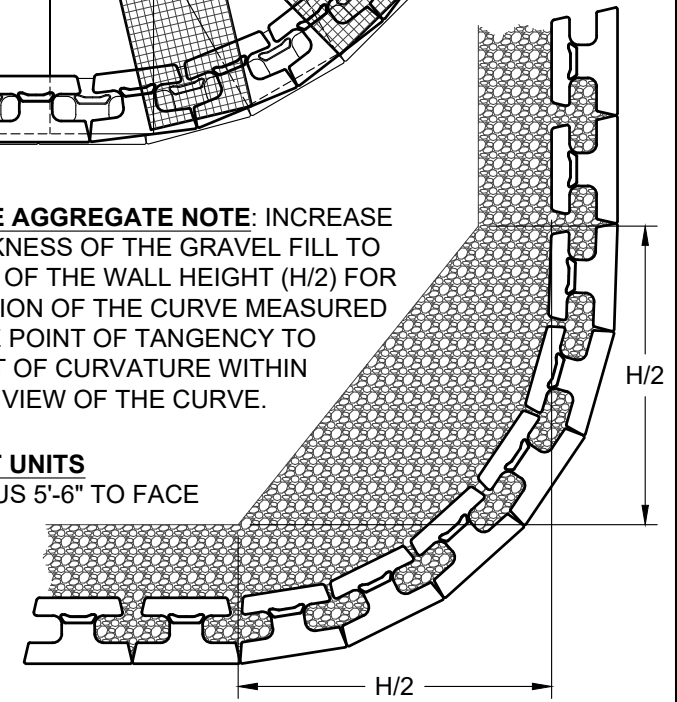
GEOGRID LAYOUT

STEP 2 - LAY THE NEXT COURSE OF BLOCK. MAKE A MARK ON THE BACK OF THE BLOCKS IN THE AREAS THAT ARE NOT REINFORCED. BACKFILL AND COMPACT THAT COURSE.



DRAINAGE AGGREGATE NOTE: INCREASE THE THICKNESS OF THE GRAVEL FILL TO ONE HALF OF THE WALL HEIGHT (H/2) FOR THE PORTION OF THE CURVE MEASURED FROM THE POINT OF TANGENCY TO THE POINT OF CURVATURE WITHIN THE PLAN VIEW OF THE CURVE.

STRAIGHT UNITS
MIN. RADIUS 5'-6" TO FACE



BLOCK/AGGREGATE LAYOUT



This drawing is for illustrative purposes only and should not be used for construction without the signature of a registered professional engineer.

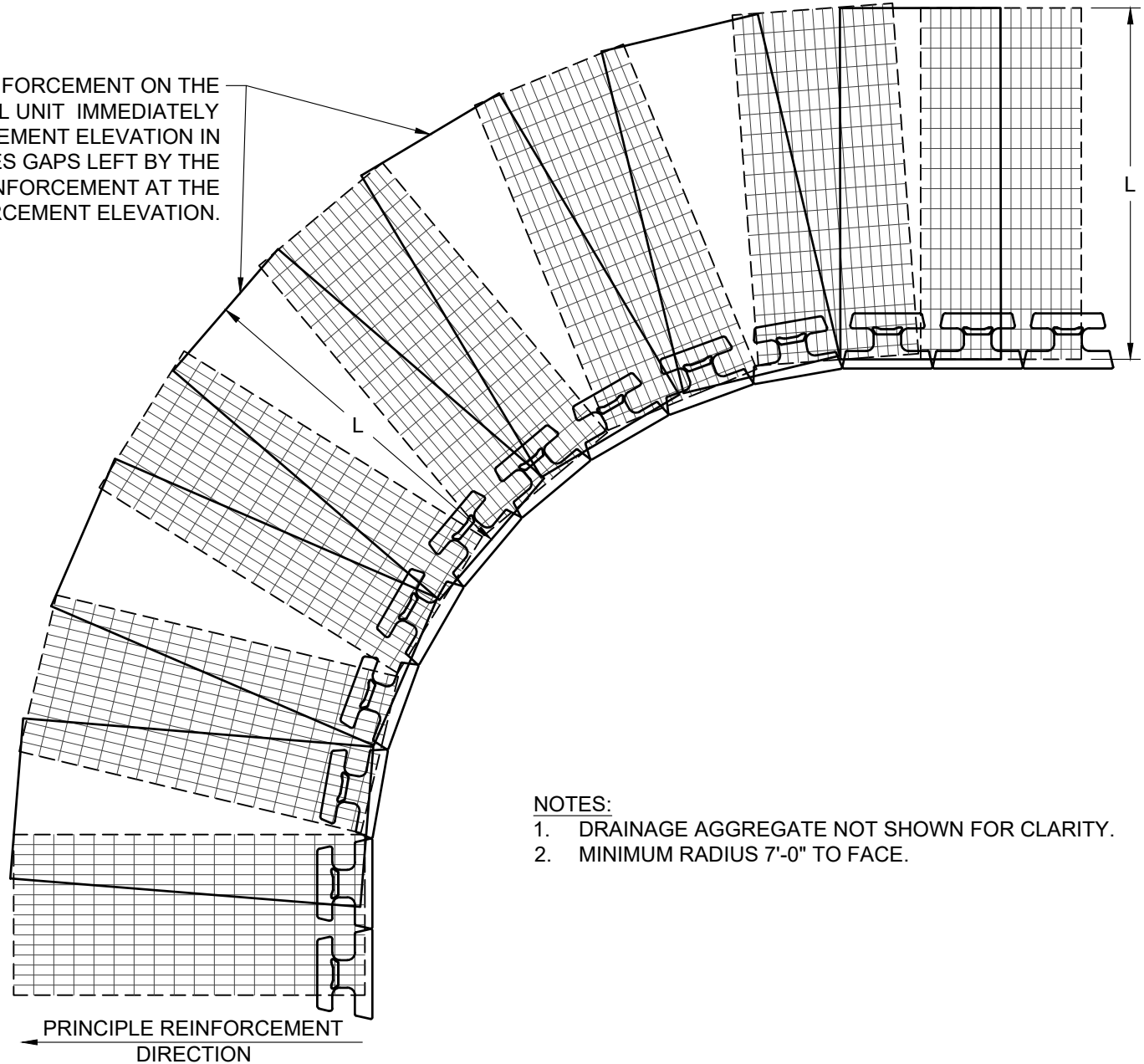
www.anchordiamond.com

© 2026 ANCHOR Engineering, LLC®
and © 2026 ANCHOR DIAMOND Group. All rights reserved

Vertica® Retaining Wall System
TYPICAL DETAIL OUTSIDE CURVES

Scale: 3/8" = 1'-0"	Drawn by: MAH
Date: 6/3/2026	Drawing number: VT27

PLACE ADDITIONAL REINFORCEMENT ON THE NEXT COURSE OF SEGMENTAL UNIT IMMEDIATELY ABOVE THE SPECIFIED PLACEMENT ELEVATION IN A MANNER THAT ELIMINATES GAPS LEFT BY THE PREVIOUS LAYER OF REINFORCEMENT AT THE SPECIFIED REINFORCEMENT ELEVATION.



NOTES:

1. DRAINAGE AGGREGATE NOT SHOWN FOR CLARITY.
2. MINIMUM RADIUS 7'-0" TO FACE.



This drawing is for illustrative purposes only and should not be used for construction without the signature of a registered professional engineer.

www.anchordiamond.com

© 2026 ANCHOR Engineering, LLC®
and © 2026 ANCHOR DIAMOND Group. All rights reserved

Vertica® Retaining Wall System
TYPICAL DETAIL INSIDE CURVES

Scale:
3/8" = 1'-0"

Drawn by:
MAH

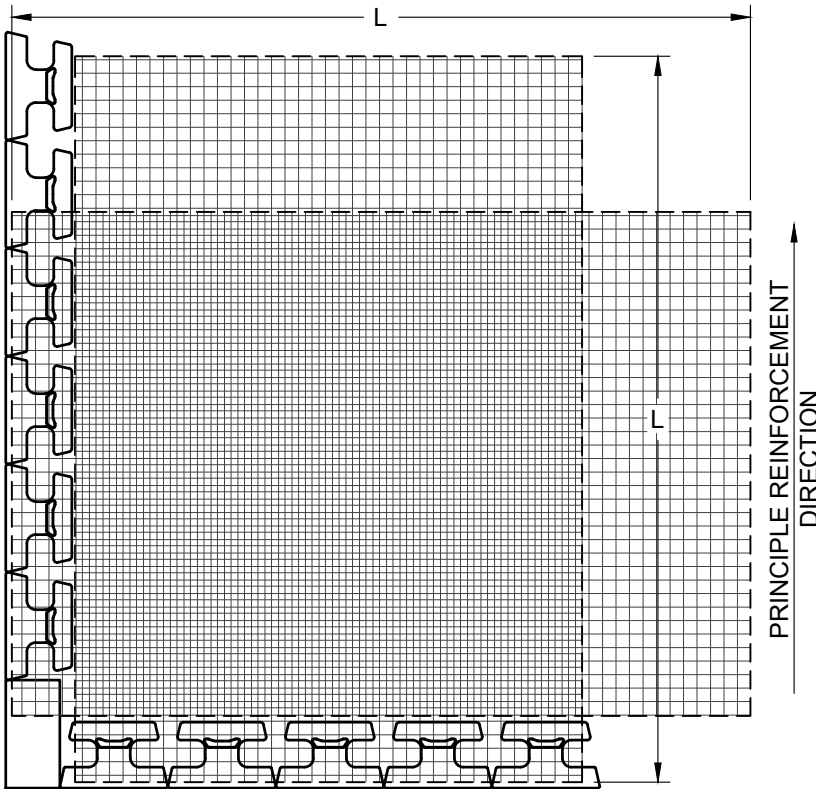
Date:
6/3/2026

Drawing number:
VT28

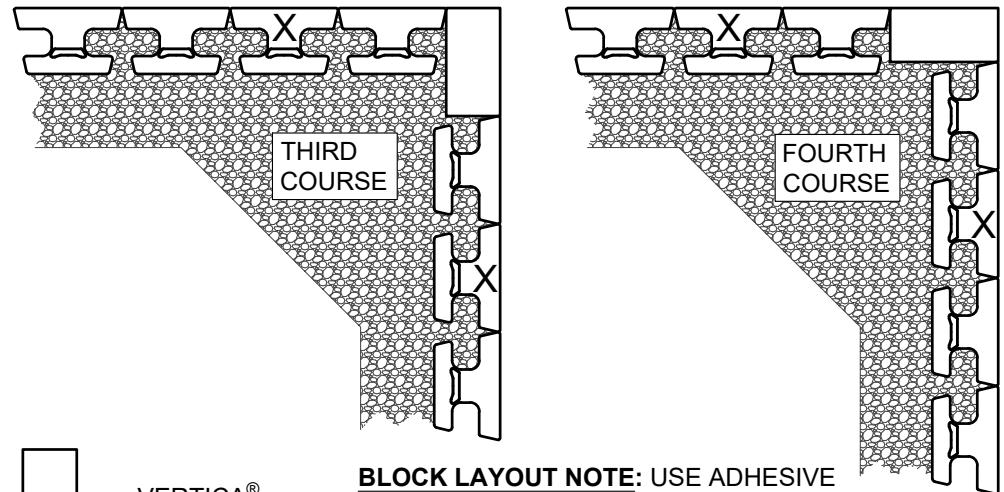
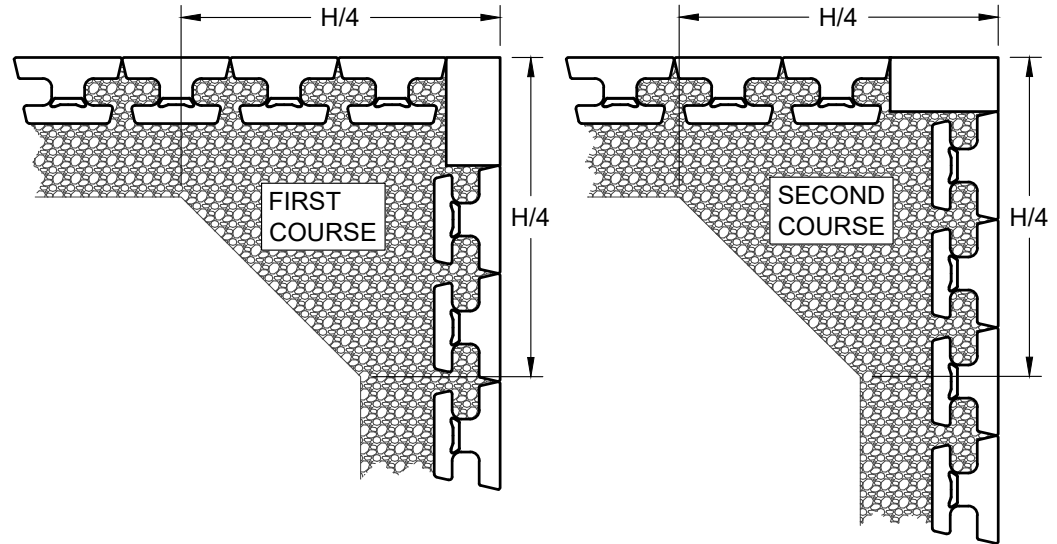
REINFORCEMENT NOTE: IN THE "CROSS-OVER AREA" OF REINFORCEMENT, ONE OF THE LAYERS OF REINFORCEMENT SHOULD BE LOWERED OR RAISED ONE COURSE TO ALLOW PLACEMENT OF THE REINFORCEMENT WITH THE PRINCIPLE REINFORCEMENT STRENGTH DIRECTION PROPERLY ORIENTATED. THE REINFORCEMENT SHOULD NOT EXTEND INTO THE SEGMENTAL RETAINING WALL UNITS ON THE RETURN LEG OF THE 90-DEGREE CORNER.

DRAINAGE AGGREGATE NOTE: INCREASE THE THICKNESS OF THE GRAVEL FILL TO ONE FOURTH OF THE WALL HEIGHT (H/4) MEASURED IN EACH DIRECTION FROM THE BACK OF THE WALL.

PRINCIPLE REINFORCEMENT
DIRECTION →



GEOGRID LAYOUT



BLOCK LAYOUT NOTE: USE ADHESIVE ON EXPOSED PARTIAL UNITS CUT UNITS (X) TO MAINTAIN RUNNING BOND

BLOCK/AGGREGATE LAYOUT



This drawing is for illustrative purposes only and should not be used for construction without the signature of a registered professional engineer.

www.anchordiamond.com

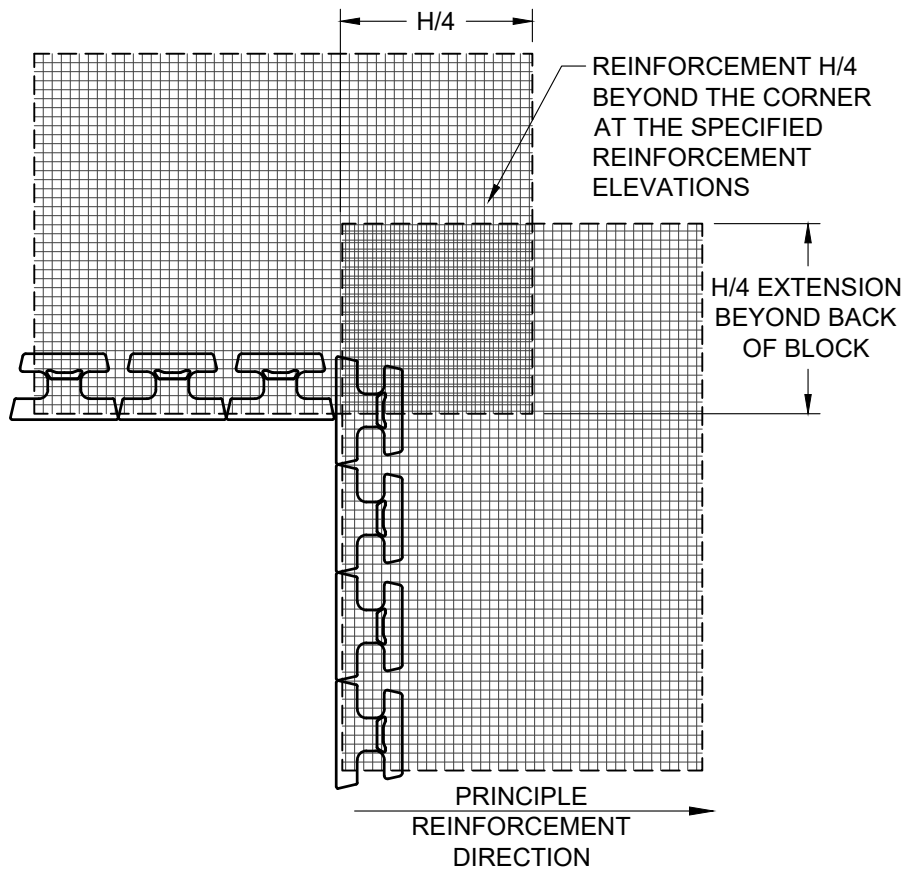
© 2026 ANCHOR Engineering, LLC®
and © 2026 ANCHOR DIAMOND Group. All rights reserved

Vertica® Retaining Wall System

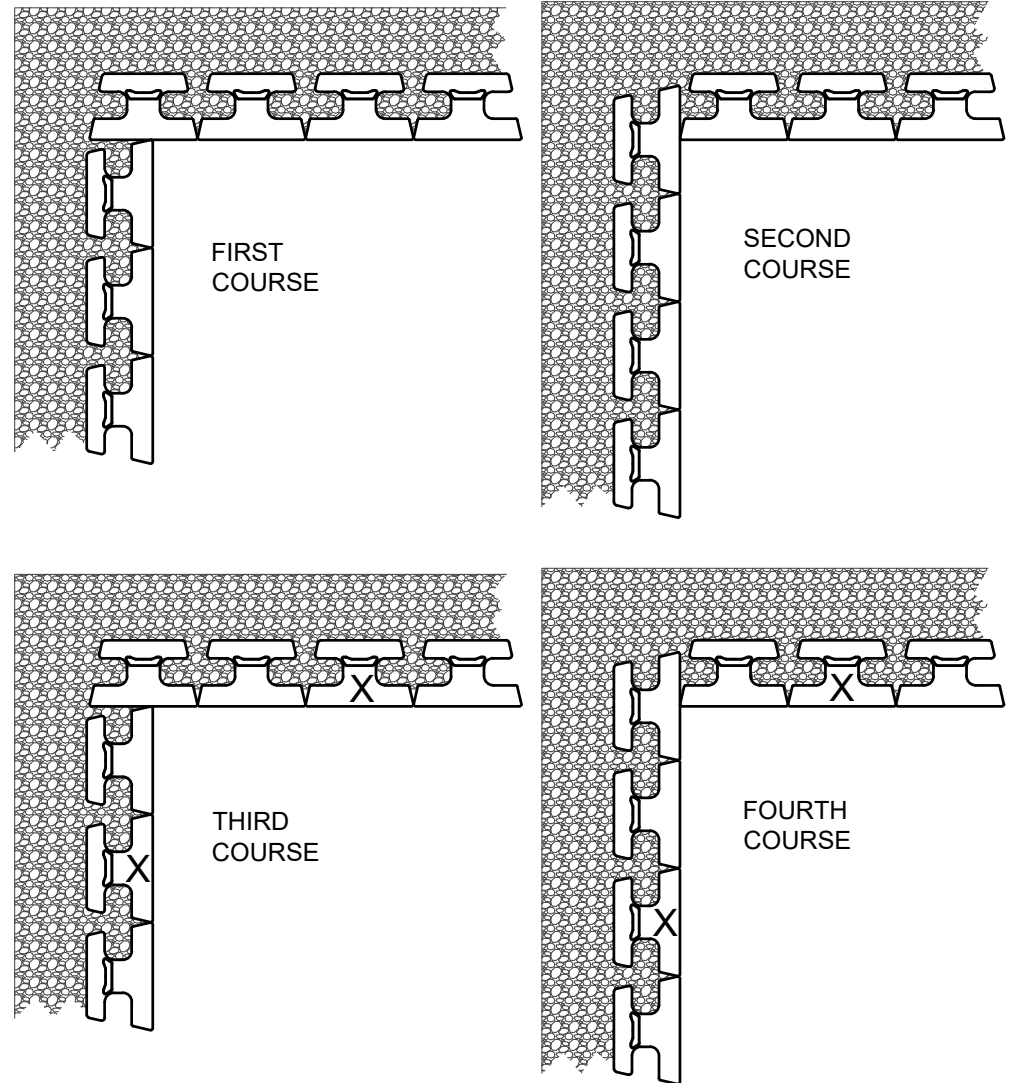
TYPICAL DETAIL OUTSIDE CORNERS

Scale: 3/8" = 1'-0"	Drawn by: MAH
Date: 6/3/2026	Drawing number: VT29

NOTE: USE ADHESIVE ON EXPOSED PARTIAL UNITS.
CUT UNITS (X) TO MAINTAIN RUNNING BOND



GEOGRID LAYOUT



BLOCK LAYOUT



This drawing is for illustrative purposes only and should not be used for construction without the signature of a registered professional engineer.

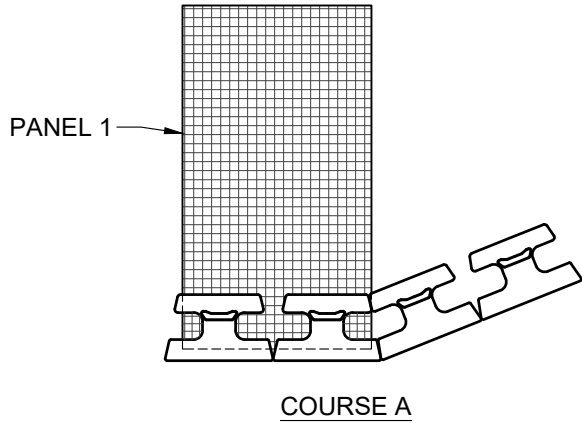
www.anchordiamond.com

© 2026 ANCHOR Engineering, LLC®
and © 2026 ANCHOR DIAMOND Group. All rights reserved

Vertica® Retaining Wall System

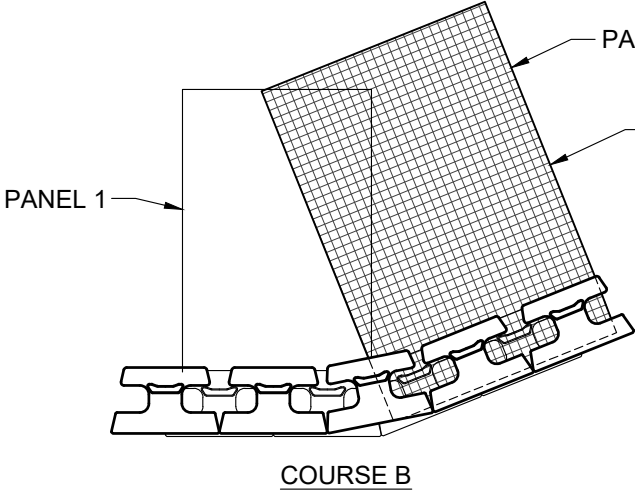
TYPICAL DETAIL INSIDE CORNERS

Scale: 3/8" = 1'-0"	Drawn by: MAH
Date: 6/3/2026	Drawing number: VT30



NOTES:

1. ALTERNATE COURSES "A" & "B" AS NEEDED TO FULL HEIGHT OF WALL.
2. MODIFY UNITS AS NEEDED TO MAINTAIN RUNNING BOND.
3. ADHERE ALL PARTIAL UNITS WITH CONSTRUCTION GRADE ADHESIVE.
4. ADJUST PLACEMENT IN FIELD TO ACHIEVE DESIRED ANGLE.
5. FREE-DRAINING AGGREGATE (NOT SHOWN) TO SPAN 10 FT. ALONG THE WALL FACE AND TO THE BACK OF THE REINFORCED ZONE.



PLACE GEOGRID REINFORCEMENT SUCH THAT ITS ALIGNMENT IS PERPENDICULAR TO FACE OF WALL AND THAT 100% COVERAGE OF REINFORCED FILL IS PROVIDED.

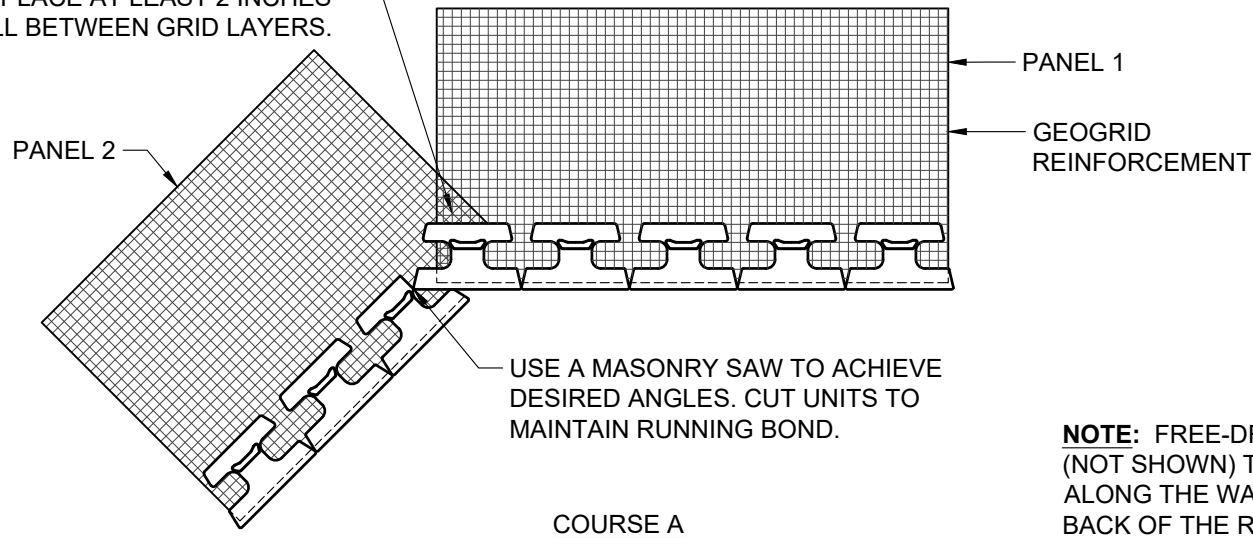


This drawing is for illustrative purposes only and should not be used for construction without the signature of a registered professional engineer.
 www.anchordiamond.com
 © 2026 ANCHOR Engineering, LLC®
 and © 2026 ANCHOR DIAMOND Group. All rights reserved

Vertica® Retaining Wall System
TYPICAL DETAIL OUTSIDE ANGLED CORNERS

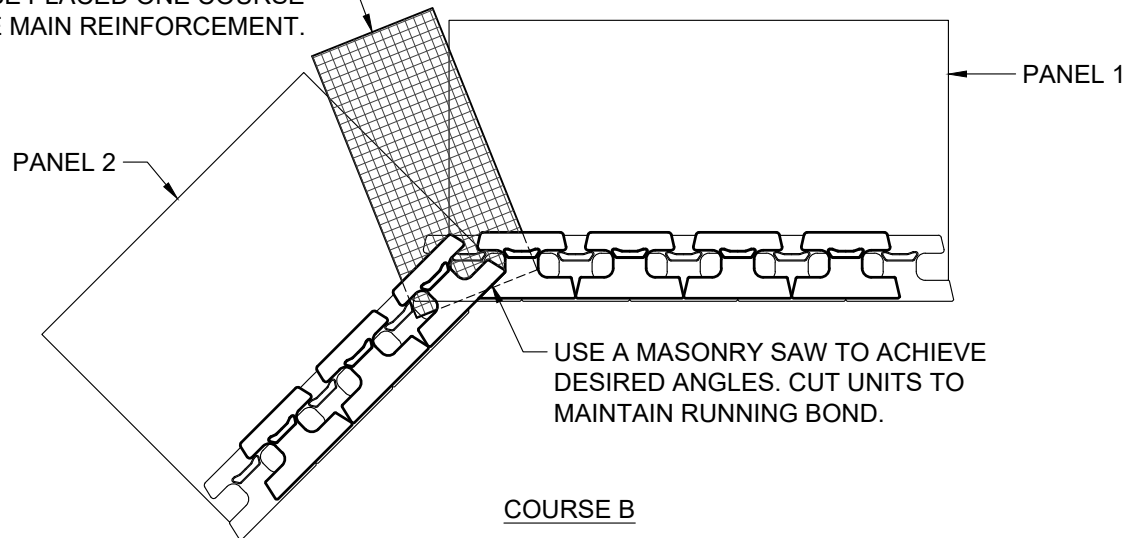
Scale: 3/8" = 1'-0"	Drawn by: MAH
Date: 6/3/2026	Drawing number: VT31

TRIM OVERLAPPED PANELS AT BACK OF BLOCK FACE TO REDUCE OVERLAP. WHERE AREAS OF OVERLAP OCCUR, PLACE AT LEAST 2 INCHES OF REINFORCED FILL BETWEEN GRID LAYERS.



NOTE: FREE-DRAINING AGGREGATE (NOT SHOWN) TO SPAN 10 FT. ALONG THE WALL FACE AND TO THE BACK OF THE REINFORCED ZONE

PLACE ADDITIONAL PANEL AT CORNER TO PROVIDE 100% GEOGRID COVERAGE OF REINFORCED FILL. THIS PANEL SHOULD BE PLACED ONE COURSE ABOVE MAIN REINFORCEMENT.



This drawing is for illustrative purposes only and should not be used for construction without the signature of a registered professional engineer.

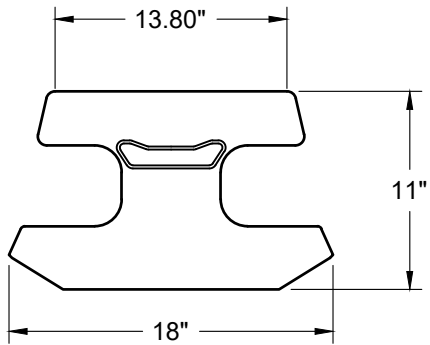
www.anchordiamond.com

© 2026 ANCHOR Engineering, LLC®
and © 2026 ANCHOR DIAMOND Group. All rights reserved

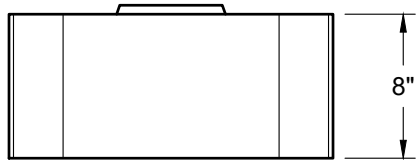
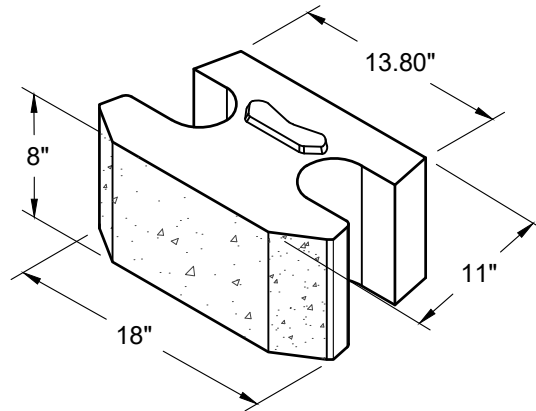
Vertica® Retaining Wall System

TYPICAL DETAIL INSIDE ANGLED CORNERS

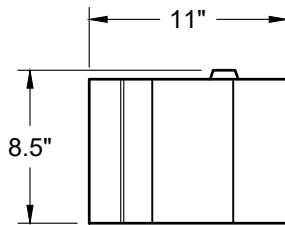
Scale: 3/8" = 1'-0"	Drawn by: MAH
Date: 6/3/2026	Drawing number: VT32



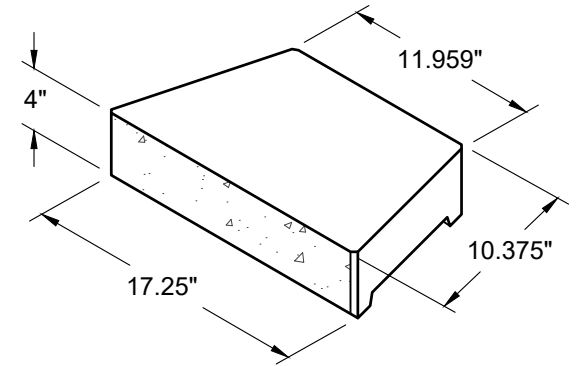
TOP VIEW



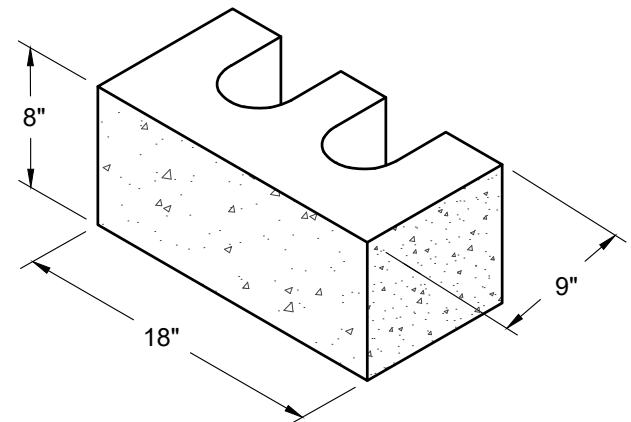
FRONT VIEW



SIDE VIEW



CAP UNIT



CORNER UNIT



This drawing is for illustrative purposes only and should not be used for construction without the signature of a registered professional engineer.

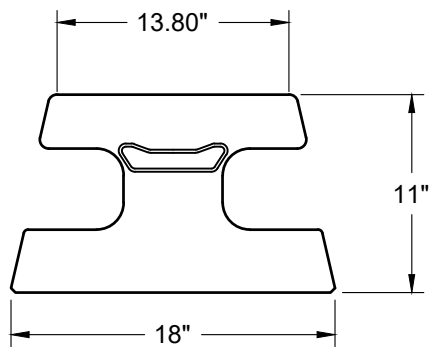
www.anchordiamond.com

© 2026 ANCHOR Engineering, LLC®
and © 2026 ANCHOR DIAMOND Group. All rights reserved

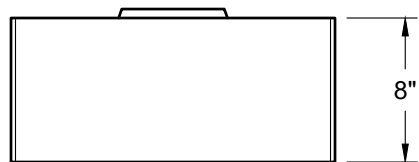
Vertica® Retaining Wall System

INDIVIDUAL BLOCK DETAILS - BEVELED FACE

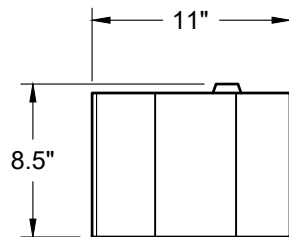
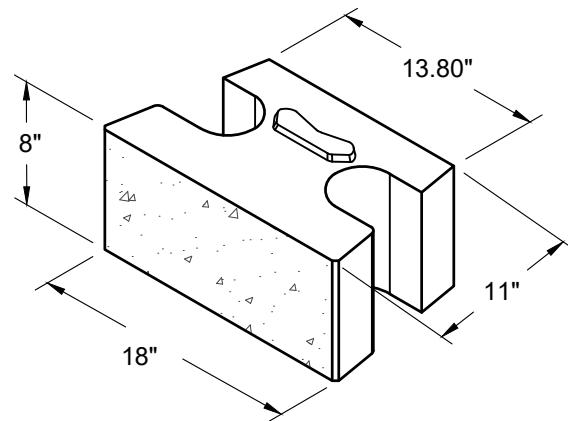
Scale:	N.T.S	Drawn by:	MAH
Date:	6/3/2026	Drawing number:	VT33



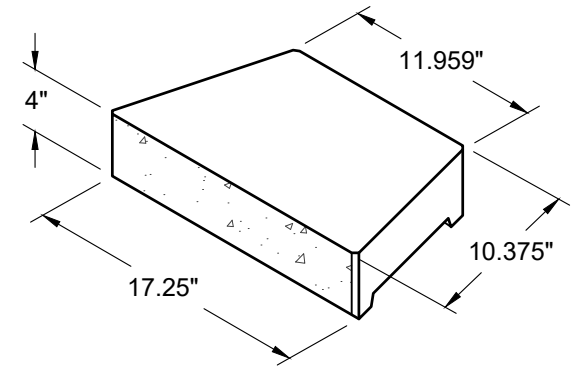
TOP VIEW



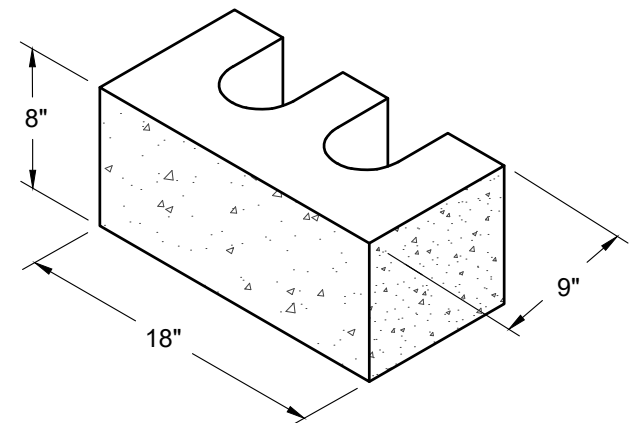
FRONT VIEW



SIDE VIEW



CAP UNIT



CORNER UNIT



This drawing is for illustrative purposes only and should not be used for construction without the signature of a registered professional engineer.

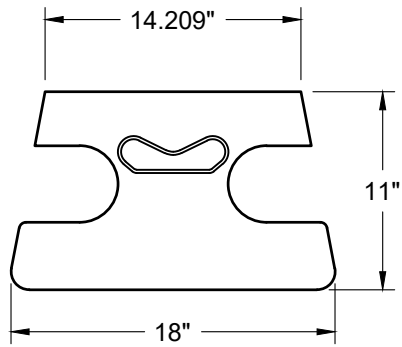
www.anchordiamond.com

© 2026 ANCHOR Engineering, LLC®
and © 2026 ANCHOR DIAMOND Group. All rights reserved

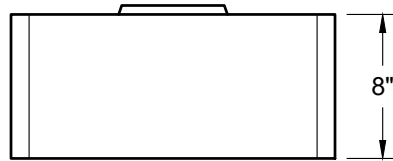
Vertica® Retaining Wall System

INDIVIDUAL BLOCK DETAILS - STRAIGHT FACE

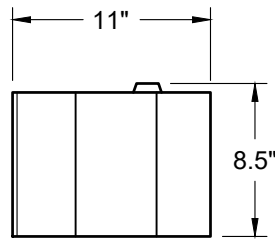
Scale:	N.T.S	Drawn by:	MAH
Date:	6/3/2026	Drawing number:	VT34



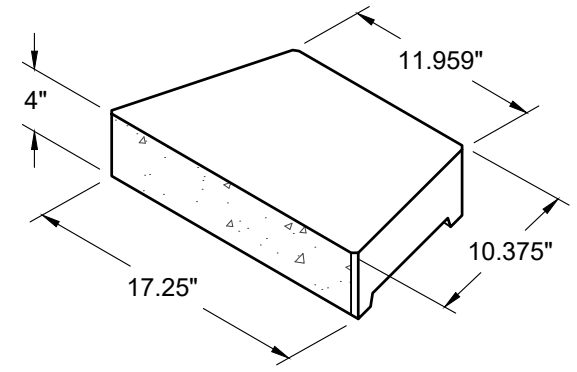
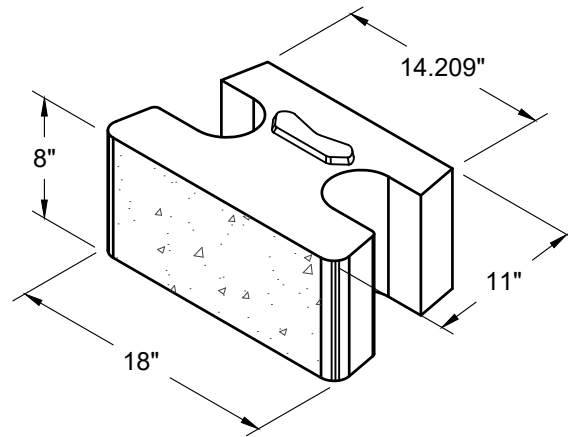
TOP VIEW



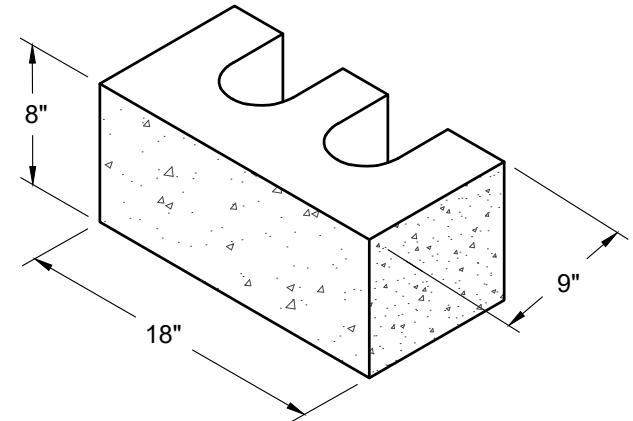
FRONT VIEW



SIDE VIEW



CAP UNIT



CORNER UNIT



This drawing is for illustrative purposes only and should not be used for construction without the signature of a registered professional engineer.

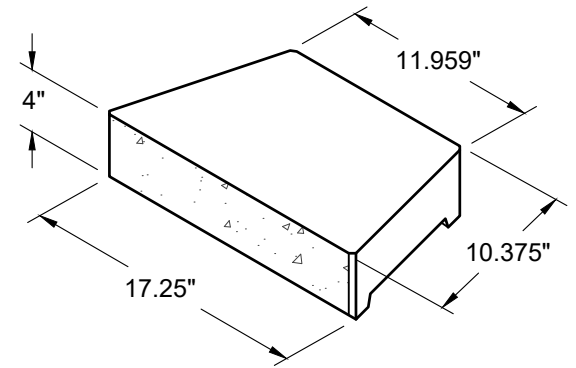
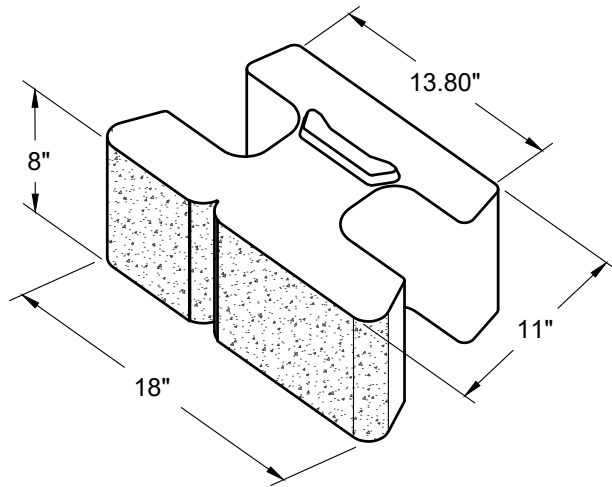
www.anchordiamond.com

© 2026 ANCHOR Engineering, LLC®
and © 2026 ANCHOR DIAMOND Group. All rights reserved

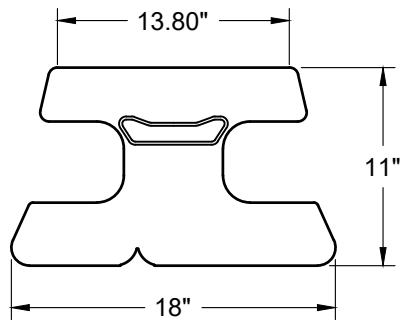
Vertica® Retaining Wall System

INDIVIDUAL BLOCK DETAILS - STONE CUT FACE

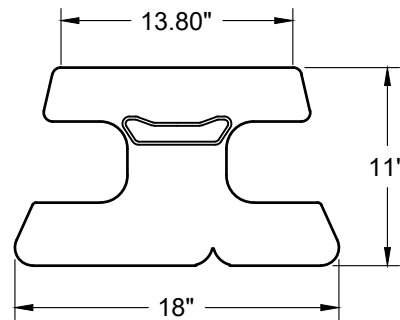
Scale:	N.T.S	Drawn by:	MAH
Date:	6/3/2026	Drawing number:	VT35



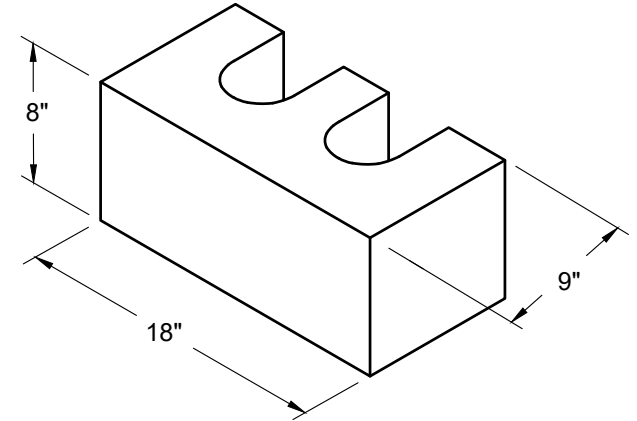
CAP UNIT



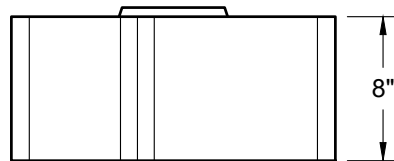
LEFT JOINT - TOP VIEW



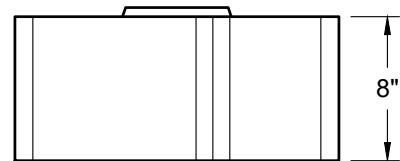
RIGHT JOINT - TOP VIEW



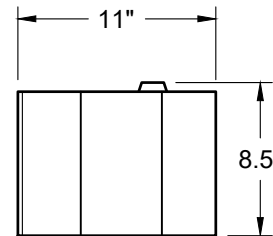
CORNER UNIT



LEFT JOINT - FRONT VIEW



RIGHT JOINT - FRONT VIEW



SIDE VIEW



This drawing is for illustrative purposes only and should not be used for construction without the signature of a registered professional engineer.

www.anchordiamond.com

© 2026 ANCHOR Engineering, LLC®
and © 2026 ANCHOR DIAMOND Group. All rights reserved

Vertica® Retaining Wall System

INDIVIDUAL BLOCK DETAILS - VIRTUAL JOINT

Scale:	N.T.S	Drawn by:	MAH
Date:	6/3/2026	Drawing number:	VT36