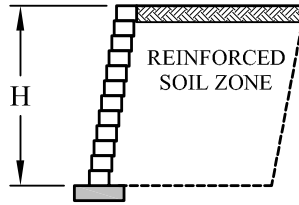


Matiz™ 6" Multi-Piece Retaining Wall System

Estimating Chart for Geosynthetic Reinforcement

No Slopes / No Surcharge

FOR ESTIMATING PURPOSES ONLY - NOT FOR CONSTRUCTION



	CLAY & SILT SOIL	SILTY / CLAYEY SAND SOIL	CLEAN SAND & GRAVEL SOIL
H	$\phi = 26^\circ$ $\gamma = 120 \text{ pcf (19 kN/m}^3\text{)}$	$\phi = 30^\circ$ $\gamma = 120 \text{ pcf (19 kN/m}^3\text{)}$	$\phi = 34^\circ$ $\gamma = 120 \text{ pcf (19 kN/m}^3\text{)}$
1'-0" (300 mm) 2 Courses	NO REINFORCEMENT REQUIRED	NO REINFORCEMENT REQUIRED	NO REINFORCEMENT REQUIRED
2'-0" (600 mm) 4 Courses	4.0' (1200 mm)	NO REINFORCEMENT REQUIRED	NO REINFORCEMENT REQUIRED
3'-0" (900 mm) 6 Courses	4.0' (1200 mm) 4.0' (1200 mm)	4.0' (1200 mm) 4.0' (1200 mm)	NO REINFORCEMENT REQUIRED
4'-0" (1200 mm) 8 Courses	4.0' (1200 mm) 4.0' (1200 mm) 4.0' (1200 mm)	4.0' (1200 mm) 4.0' (1200 mm) 4.0' (1200 mm)	4.0' (1200 mm) 4.0' (1200 mm) 4.0' (1200 mm)
5'-0" (1500 mm) 10 Courses	4.5' (1350 mm) 4.5' (1350 mm) 4.5' (1350 mm) 4.5' (1350 mm)	4.5' (1350 mm) 4.5' (1350 mm) 4.5' (1350 mm) 4.5' (1350 mm)	4.0' (1200 mm) 4.0' (1200 mm) 4.0' (1200 mm) 4.0' (1200 mm)
6'-0" (1800 mm) 12 Courses	5.0' (1500 mm) 5.0' (1500 mm) 5.0' (1500 mm) 5.0' (1500 mm) 5.0' (1500 mm)	5.0' (1500 mm) 5.0' (1500 mm) 5.0' (1500 mm) 5.0' (1500 mm) 5.0' (1500 mm)	4.5' (1350 mm) 4.5' (1350 mm) 4.5' (1350 mm) 4.5' (1350 mm) 4.5' (1350 mm)

©2023 ANCHOR DIAMOND Group. All rights reserved.
AD23-006 01/23

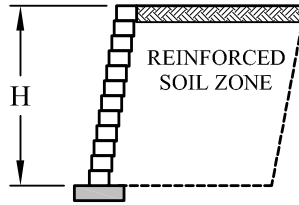
ANCHOR DIAMOND Group
5909 Baker Rd, Suite 550
Minnetonka, MN 55345

Matiz™ 6" Multi-Piece Retaining Wall System

Estimating Chart for Geosynthetic Reinforcement

100 PSF Surcharge

FOR ESTIMATING PURPOSES ONLY - NOT FOR CONSTRUCTION



	CLAY & SILT SOIL	SILTY / CLAYEY SAND SOIL	CLEAN SAND & GRAVEL SOIL
H	$\phi = 26^\circ$ $\gamma = 120 \text{ pcf (19 kN/m}^3\text{)}$	$\phi = 30^\circ$ $\gamma = 120 \text{ pcf (19 kN/m}^3\text{)}$	$\phi = 34^\circ$ $\gamma = 120 \text{ pcf (19 kN/m}^3\text{)}$
1'-0" (300 mm) 2 Courses	NO REINFORCEMENT REQUIRED	NO REINFORCEMENT REQUIRED	NO REINFORCEMENT REQUIRED
2'-0" (600 mm) 4 Courses	4.0' (1200 mm)	NO REINFORCEMENT REQUIRED	NO REINFORCEMENT REQUIRED
3'-0" (900 mm) 6 Courses	4.0' (1200 mm) 4.0' (1200 mm)	4.0' (1200 mm) 4.0' (1200 mm)	4.0' (1200 mm) 4.0' (1200 mm)
4'-0" (1200 mm) 8 Courses	5.0' (1500 mm) 5.0' (1500 mm) 5.0' (1500 mm)	4.0' (1200 mm) 4.0' (1200 mm) 4.0' (1200 mm)	4.0' (1200 mm) 4.0' (1200 mm) 4.0' (1200 mm)
5'-0" (1500 mm) 10 Courses	5.5' (1650 mm) 5.5' (1650 mm) 5.5' (1650 mm) 5.5' (1650 mm)	4.5' (1350 mm) 4.5' (1350 mm) 4.5' (1350 mm) 4.5' (1350 mm)	4.0' (1200 mm) 4.0' (1200 mm) 4.0' (1200 mm) 4.0' (1200 mm)
6'-0" (1800 mm) 12 Courses	6.0' (1800 mm) 6.0' (1800 mm) 6.0' (1800 mm) 6.0' (1800 mm) 6.0' (1800 mm)	5.0' (1500 mm) 5.0' (1500 mm) 5.0' (1500 mm) 5.0' (1500 mm) 5.0' (1500 mm)	4.5' (1350 mm) 4.5' (1350 mm) 4.5' (1350 mm) 4.5' (1350 mm) 4.5' (1350 mm)

©2023 ANCHOR DIAMOND Group. All rights reserved.
AD23-006 01/23

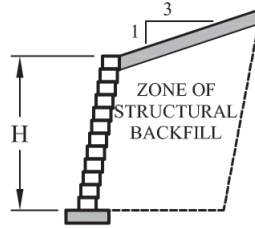
ANCHOR DIAMOND Group
5909 Baker Rd, Suite 550
Minnetonka, MN 55345

Matiz™ 6" Multi-Piece Retaining Wall System

Estimating Chart for Geosynthetic Reinforcement

3:1 Crest Slope

FOR ESTIMATING PURPOSES ONLY - NOT FOR CONSTRUCTION



	CLAY & SILT SOIL	SILTY / CLAYEY SAND SOIL	CLEAN SAND & GRAVEL SOIL
H	$\phi = 26^\circ$ $\gamma = 120 \text{ pcf (19 kN/m}^3\text{)}$	$\phi = 30^\circ$ $\gamma = 120 \text{ pcf (19 kN/m}^3\text{)}$	$\phi = 34^\circ$ $\gamma = 120 \text{ pcf (19 kN/m}^3\text{)}$
1'-0" (300 mm) 2 Courses	NO REINFORCEMENT REQUIRED	NO REINFORCEMENT REQUIRED	NO REINFORCEMENT REQUIRED
2'-0" (600 mm) 4 Courses	4.0' (1200 mm)	NO REINFORCEMENT REQUIRED	NO REINFORCEMENT REQUIRED
3'-0" (900 mm) 6 Courses	4.0' (1200 mm) 4.0' (1200 mm)	4.0' (1200 mm) 4.0' (1200 mm)	4.0' (1200 mm) 4.0' (1200 mm)
4'-0" (1200 mm) 8 Courses	4.5' (1350 mm) 4.5' (1350 mm) 4.5' (1350 mm)	4.0' (1200 mm) 4.0' (1200 mm) 4.0' (1200 mm)	4.0' (1200 mm) 4.0' (1200 mm) 4.0' (1200 mm)
5'-0" (1500 mm) 10 Courses	5.5' (1650 mm) 5.5' (1650 mm) 5.5' (1650 mm) 5.5' (1650 mm)	5.0' (1500 mm) 5.0' (1500 mm) 5.0' (1500 mm) 5.0' (1500 mm)	4.5' (1350 mm) 4.5' (1350 mm) 4.5' (1350 mm) 4.5' (1350 mm)
6'-0" (1800 mm) 12 Courses	6.5' (1950 mm) 6.5' (1950 mm) 6.5' (1950 mm) 6.5' (1950 mm) 6.5' (1950 mm)	5.5' (1650 mm) 5.5' (1650 mm) 5.5' (1650 mm) 5.5' (1650 mm) 5.5' (1650 mm)	5.0' (1500 mm) 5.0' (1500 mm) 5.0' (1500 mm) 5.0' (1500 mm) 5.0' (1500 mm)

©2023 ANCHOR DIAMOND Group. All rights reserved.
AD23-006 01/23

ANCHOR DIAMOND Group
5909 Baker Rd, Suite 850
Minnetonka, MN 55345