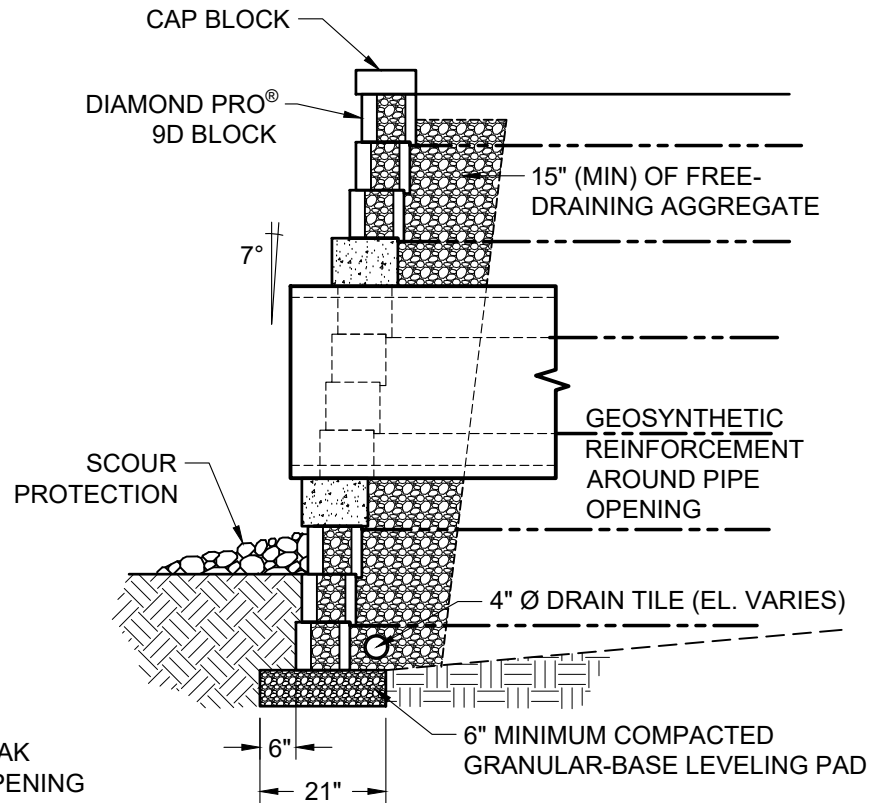


FACE VIEW



SECTION VIEW



© 2018 Anchor Wall Engineering, LLC
 © and ™ Anchor Wall Systems, Inc.
www.anchorwall.com

This drawing is for illustrative purposes only and should not be used for construction without the signature of a registered professional engineer.

Diamond Pro® 9D Straight II Face Retaining Wall System

Typical Details for Large Utilities Through Wall

Scale:
 3/8" = 1'-0"

Drawn by:
 SB

Date:
 11/5/2018

Drawing number:
 DP9ST224