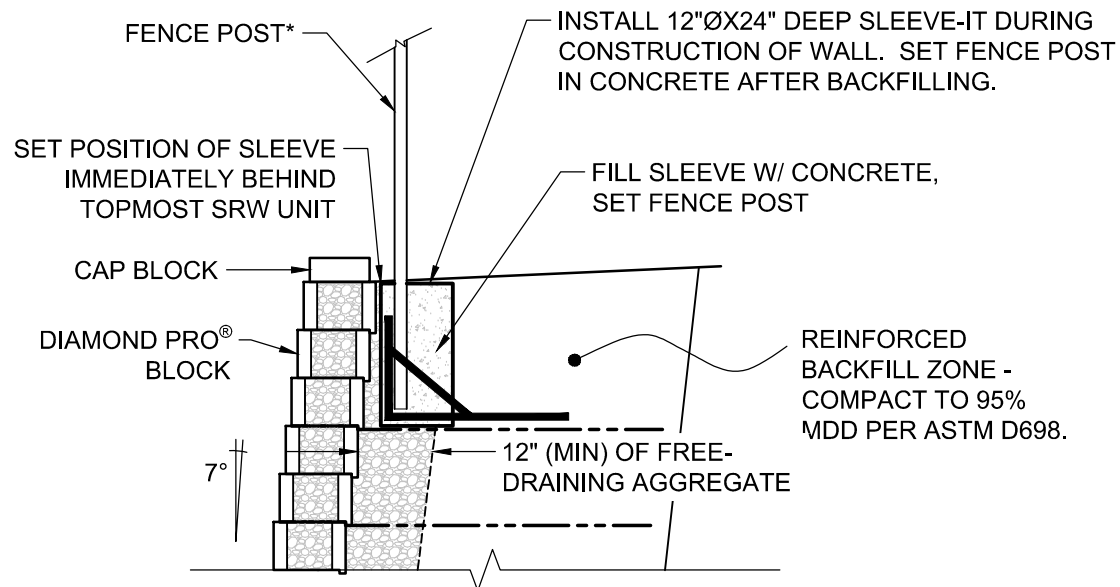


FOR MORE INFORMATION CONTACT: ADVANCED
 HARDSCAPE SOLUTIONS LLC
 1-866-843-0500 OR INFO@ADVANCEDHARDSCAPE.COM

*FENCING SYSTEMS APPROVED FOR USE WITH SLEEVE-IT ARE
 LIMITED TO THE FOLLOWING HEIGHTS:

- A. CHAIN LINK UP TO 8 FEET ABOVE FINISHED GRADE WITH POST
 SPACING OF 8 FEET (MIN)
- B. ORNAMENTAL (STEEL, ALUMINUM, WROUGHT IRON) POST UP
 TO 6 FEET ABOVE GRADE WITH POST SPACING OF 10 FEET
 (MIN)
- C. OPEN BOARD / GAP BOARD (70% OPEN) POST UP TO 6 FEET
 ABOVE FINISHED GRADE WITH POST SPACING OF 6 FEET (MIN)



© 2015 Anchor Wall Engineering, LLC
 © and ™ Anchor Wall Systems, Inc.
 www.anchorwall.com

This drawing is for illustrative purposes only and should not be used for construction without the signature of a registered professional engineer.

Diamond Pro Stone Cut® Virtual Joint Retaining Wall System

Fence Section with Sleeve-It

Scale:
 3/8" = 1'-0"

Drawn by:
 SB

Date:

Drawing number:
 DPVJ10