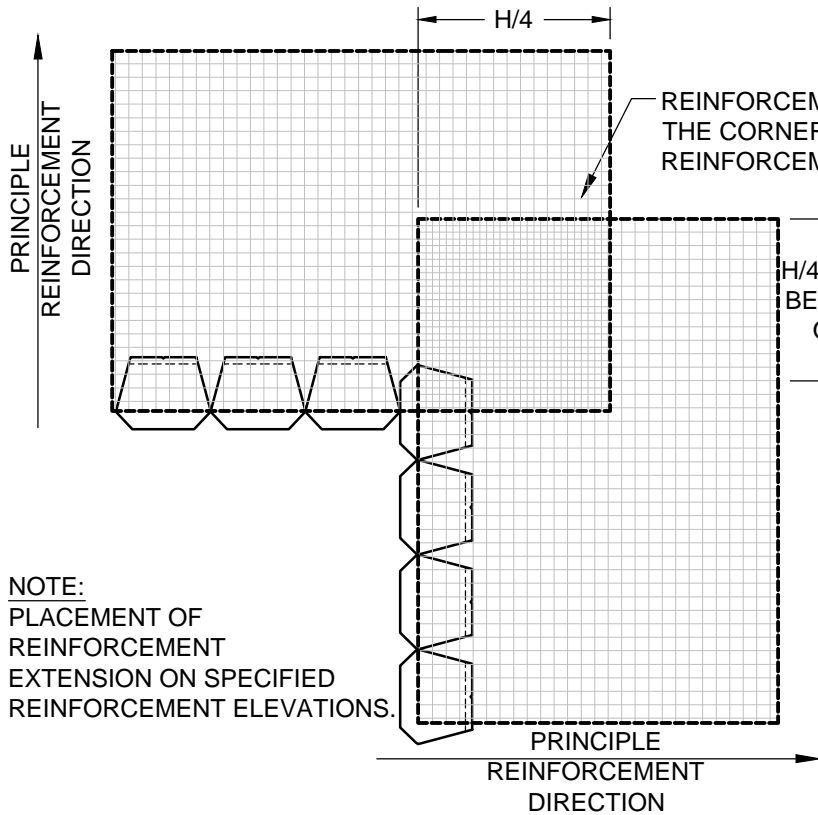
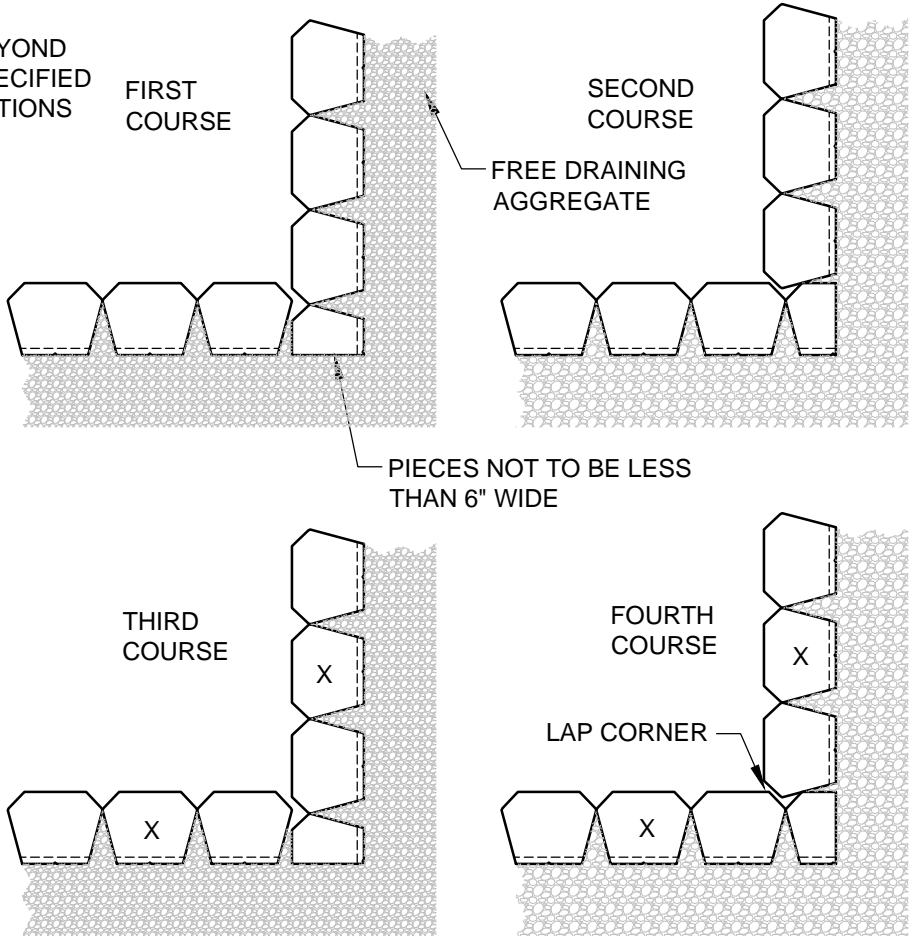


NOTE:
 USE ADHESIVE ON EXPOSED PARTIAL UNITS.
 CUT UNITS (X) TO MAINTAIN RUNNING BOND.



NOTE:
 PLACEMENT OF
 REINFORCEMENT
 EXTENSION ON SPECIFIED
 REINFORCEMENT ELEVATIONS.



© 2015 Anchor Wall Engineering, LLC
 © and ™ Anchor Wall Systems, Inc.
www.anchorwall.com

This drawing is for illustrative purposes only and should not be used for construction without the signature of a registered professional engineer.

Diamond® Beveled Face Retaining Wall System

Inside Corners

Scale:
 3/8" = 1'-0"

Drawn by:
 SB

Date:

Drawing number:
 D1BV30