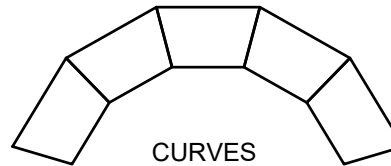
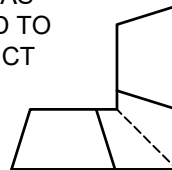


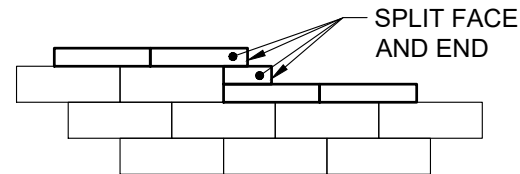
CAP UNIT



SAW CUT AS
REQUIRED TO
CONSTRUCT
MITERED
CORNER



CURVES



WALL FACE

1. ALWAYS START CAPPING WALL FROM THE LOWEST ELEVATION.
2. LAYOUT CAPS PRIOR TO USING ADHESIVE.
3. CUT CAPS TO FIT. VARIOUS COMBINATIONS OF LONG AND SHORT CAP FACES WILL BE NECESSARY FOR RADII GREATER THAN THE MINIMUM.
4. ALTERNATE SHORT AND LONG CAP FACES EVERY OTHER CAP TO ACHIEVE A STRAIGHT ROW OF CAPS.
5. USE EXTERIOR-GRADE CONSTRUCTION ADHESIVE TO SECURE CAPS.



This drawing is for illustrative purposes only and should not be used for construction without the signature of a registered professional engineer.

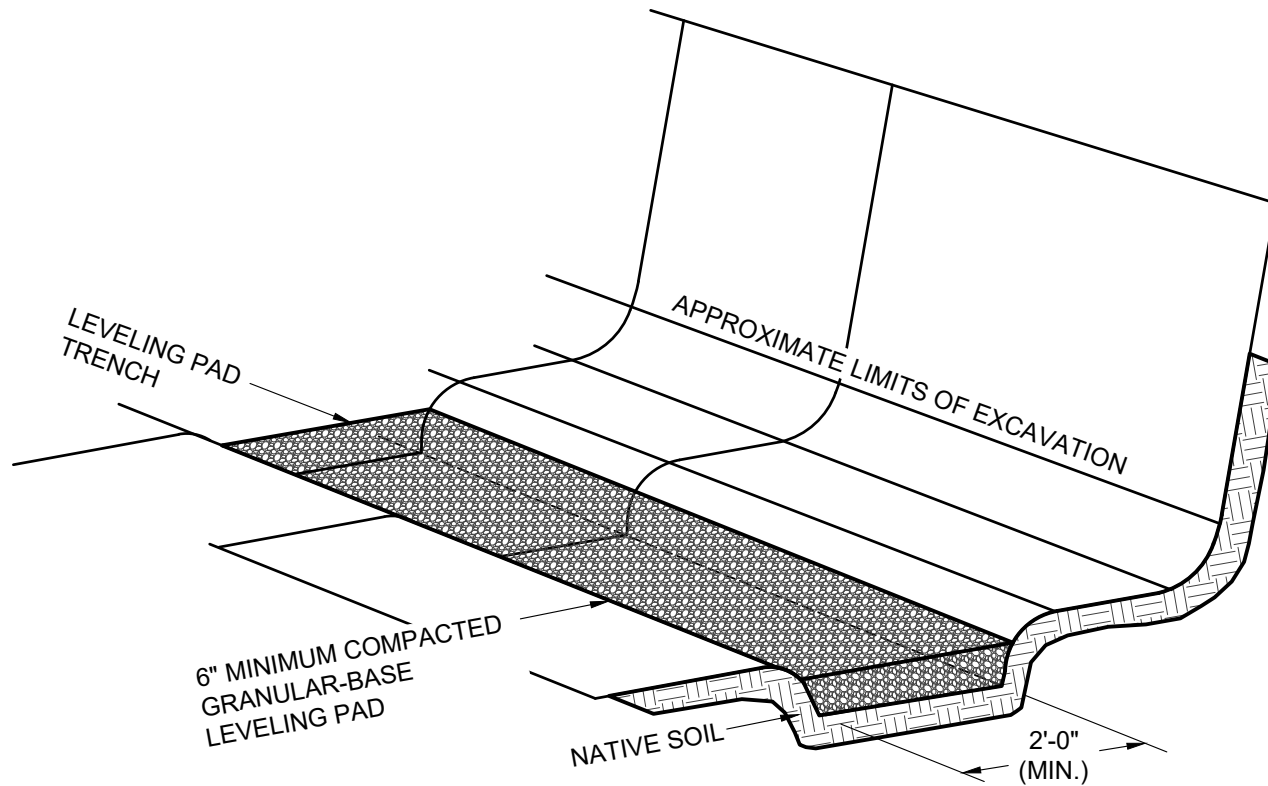
www.anchordiamond.com

© 2026 ANCHOR Engineering, LLC®
and © 2026 ANCHOR DIAMOND Group. All rights reserved

Diamond® Retaining Wall System

TYPICAL CAPPING DETAILS

Scale:	NONE	Drawn by:	MAH
Date:	1/2/2026	Drawing number:	DM01



This drawing is for illustrative purposes only and should not be used for construction without the signature of a registered professional engineer.

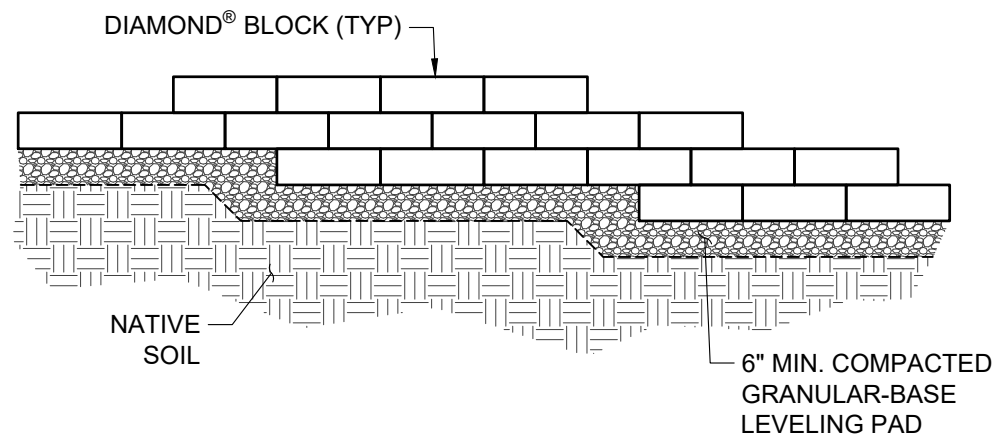
www.anchordiamond.com

© 2026 ANCHOR Engineering, LLC®
and © 2026 ANCHOR DIAMOND Group. All rights reserved

Diamond® Retaining Wall System

TYPICAL BASE PREPARATION

Scale:	NONE	Drawn by:	MAH
Date:	1/2/2026	Drawing number:	DM02



ANCHOR
DIAMOND

This drawing is for illustrative purposes only and should not be used for construction without the signature of a registered professional engineer.

www.anchordiamond.com

© 2026 ANCHOR Engineering, LLC®
and © 2026 ANCHOR DIAMOND Group. All rights reserved

Diamond® Retaining Wall System

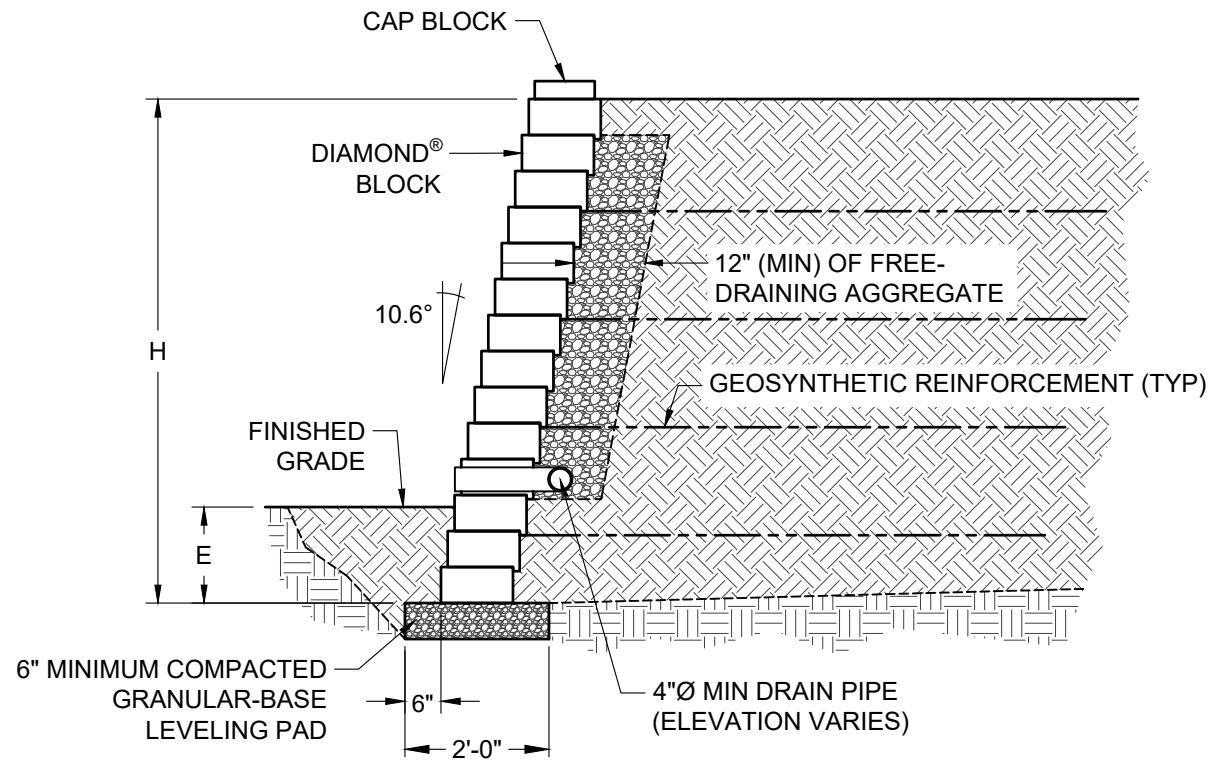
TYPICAL BASE STEP-UP

Scale:
3/8" = 1'-0"

Drawn by:
MAH

Date:
1/2/2026

Drawing number:
DM03



This drawing is for illustrative purposes only and should not be used for construction without the signature of a registered professional engineer.

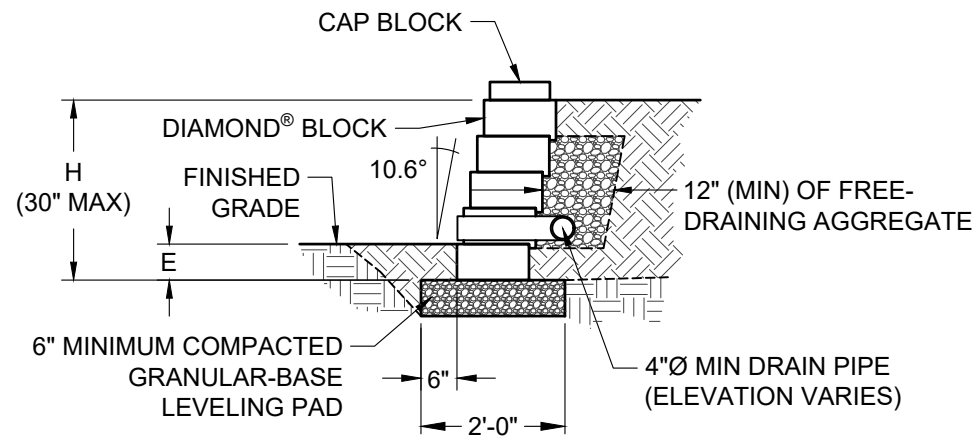
www.anchordiamond.com

© 2026 ANCHOR Engineering, LLC®
and © 2026 ANCHOR DIAMOND Group. All rights reserved

Diamond® Retaining Wall System

TYPICAL REINFORCED CROSS SECTION

Scale:	Drawn by:
3/8" = 1'-0"	MAH
Date:	Drawing number:
1/2/2026	DM04



This drawing is for illustrative purposes only and should not be used for construction without the signature of a registered professional engineer.

www.anchordiamond.com

© 2026 ANCHOR Engineering, LLC®
and © 2026 ANCHOR DIAMOND Group. All rights reserved

Diamond® Retaining Wall System

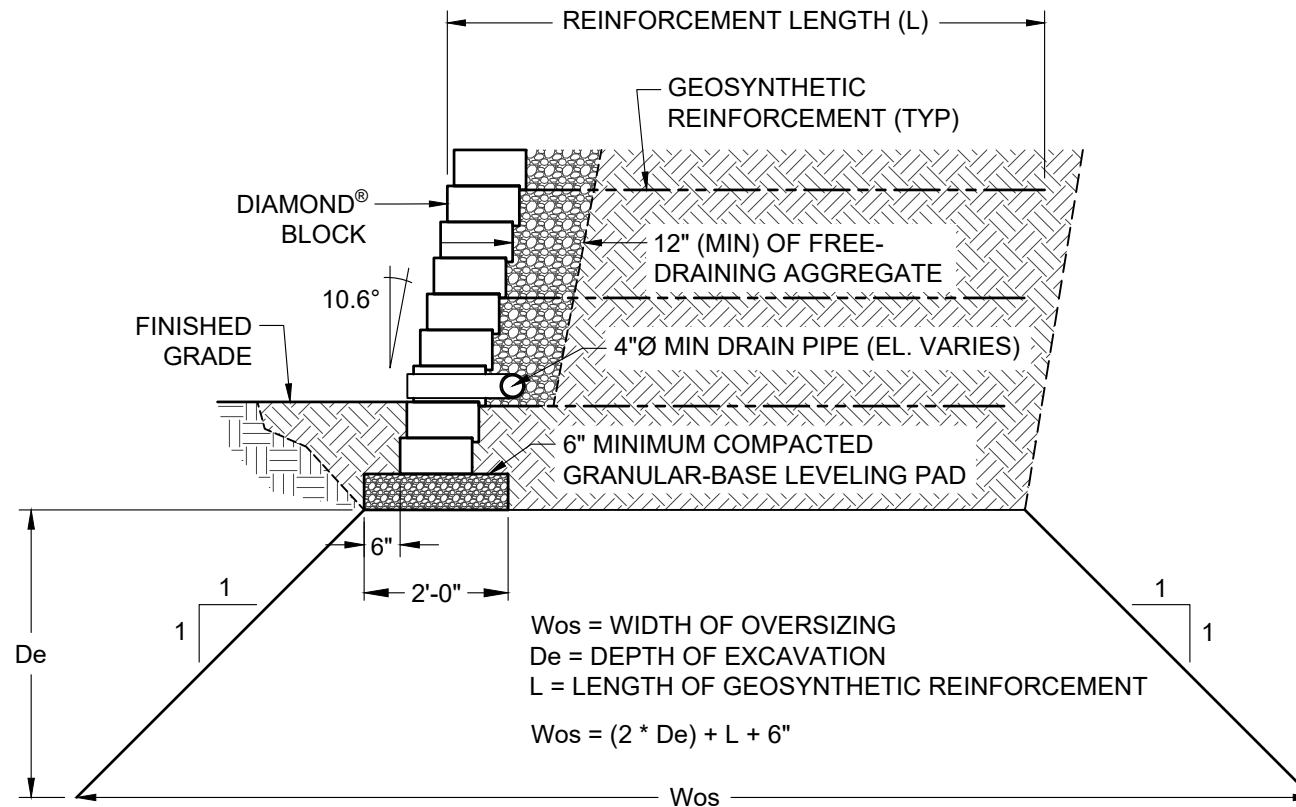
TYPICAL GRAVITY CROSS SECTION

Scale:
3/8" = 1'-0"

Drawn by:
MAH

Date:
1/2/2026

Drawing number:
DM05



ANCHOR
DIAMOND®

This drawing is for illustrative purposes only and should not be used for construction without the signature of a registered professional engineer.

www.anchordiamond.com

© 2026 ANCHOR Engineering, LLC®
and © 2026 ANCHOR DIAMOND Group. All rights reserved

Diamond® Retaining Wall System

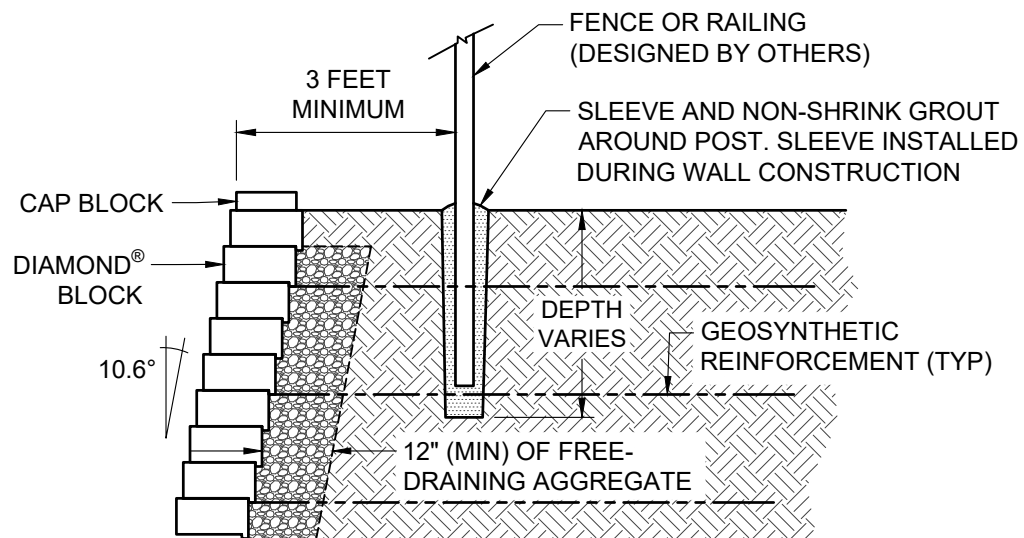
TYPICAL EXCAVATION OVERSIZING

Scale:
3/8" = 1'-0"

Drawn by:
MAH

Date:
1/2/2026

Drawing number:
DM06



This drawing is for illustrative purposes only and should not be used for construction without the signature of a registered professional engineer.

www.anchordiamond.com

© 2026 ANCHOR Engineering, LLC®
and © 2026 ANCHOR DIAMOND Group. All rights reserved

Diamond® Retaining Wall System

TYPICAL FENCE CROSS SECTION

Scale:
3/8" = 1'-0"

Drawn by:
MAH

Date:
1/2/2026

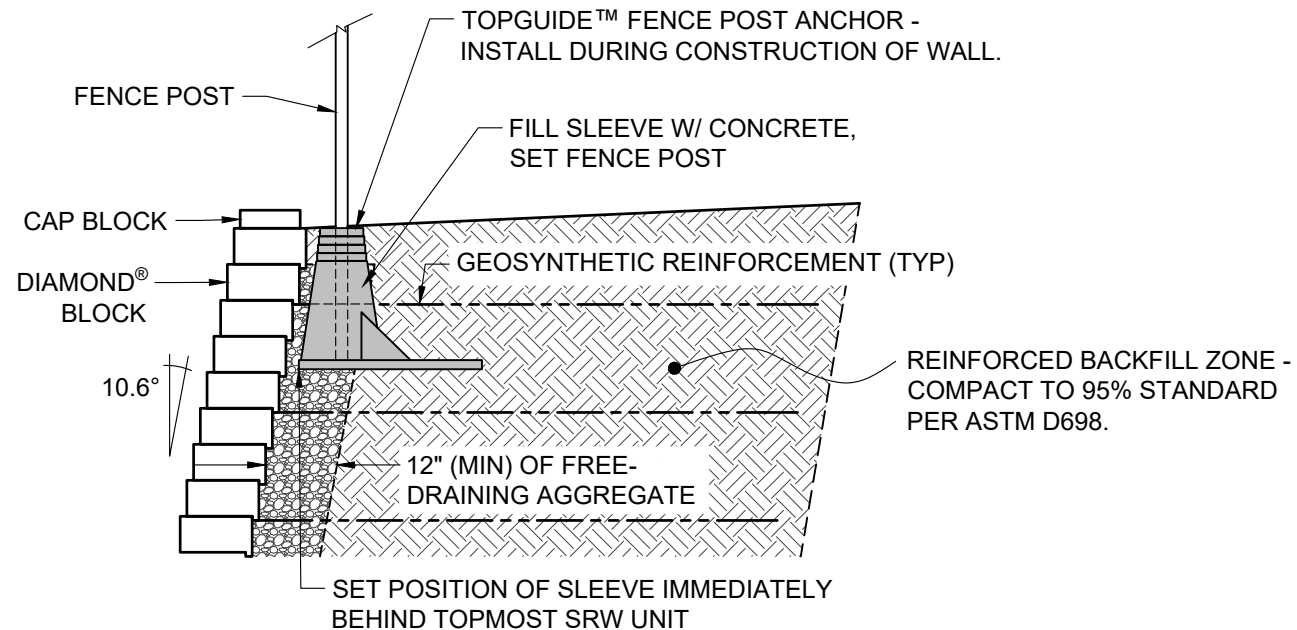
Drawing number:
DM07

NOTES:

THE USE OF TOPGUIDE™ IS LIMITED TO HANDRAIL AND SAFETY RAIL APPLICATIONS PER IBC 1607.8.1

THE TOPGUIDE™ PRODUCT SHALL BE EVENLY SPACED. USE OF THE TOPGUIDE™ SYSTEM IS LIMITED TO THE FOLLOWING FENCING APPLICATIONS WITHOUT CONSIDERATION OF WIND LOAD:

- 8-FOOT HIGH AND UNDER CHAIN LINK FENCES
- 6-FOOT HIGH AND UNDER WOOD FENCES WITH GAPS BETWEEN BOARDS
- 6-FOOT HIGH AND UNDER PVC, STEEL, ALUMINUM, OR WROUGHT IRON FENCES



This drawing is for illustrative purposes only and should not be used for construction without the signature of a registered professional engineer.

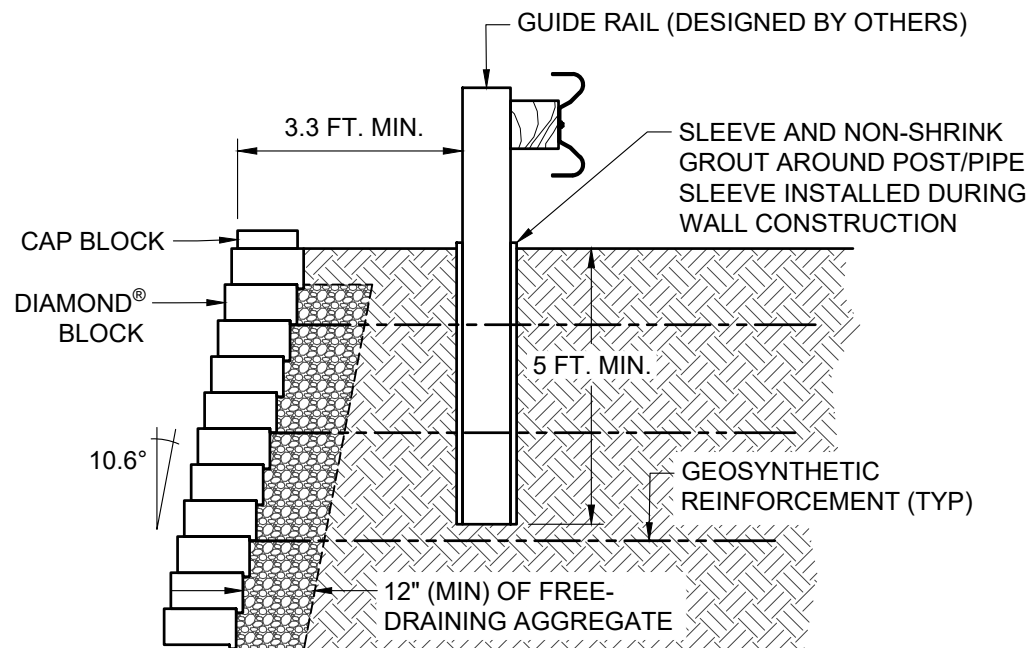
www.anchordiamond.com

© 2026 ANCHOR Engineering, LLC®
and © 2026 ANCHOR DIAMOND Group. All rights reserved

Diamond® Retaining Wall System

ALTERNATE FENCE CROSS SECTION

Scale:	Drawn by:
3/8" = 1'-0"	MAH
Date:	Drawing number:
1/2/2026	DM08



This drawing is for illustrative purposes only and should not be used for construction without the signature of a registered professional engineer.

www.anchordiamond.com

© 2026 ANCHOR Engineering, LLC®
and © 2026 ANCHOR DIAMOND Group. All rights reserved

Diamond® Retaining Wall System

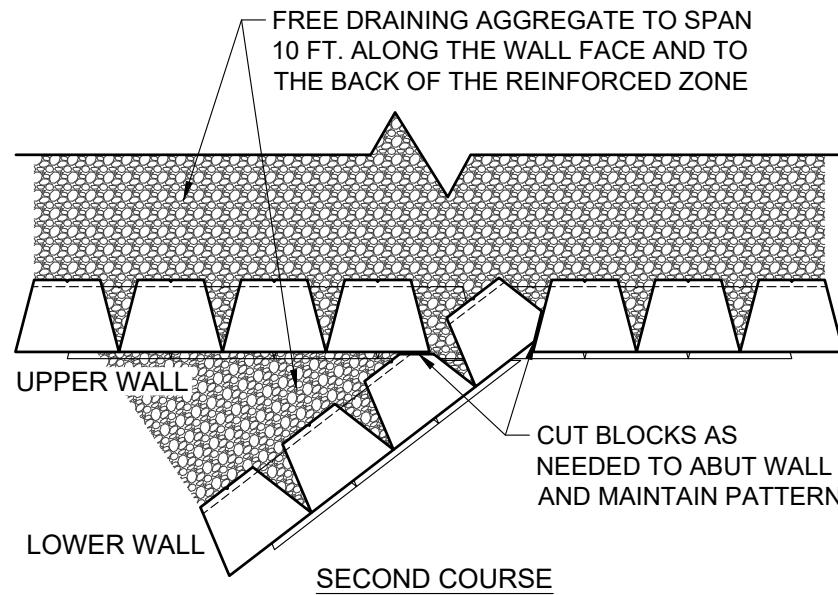
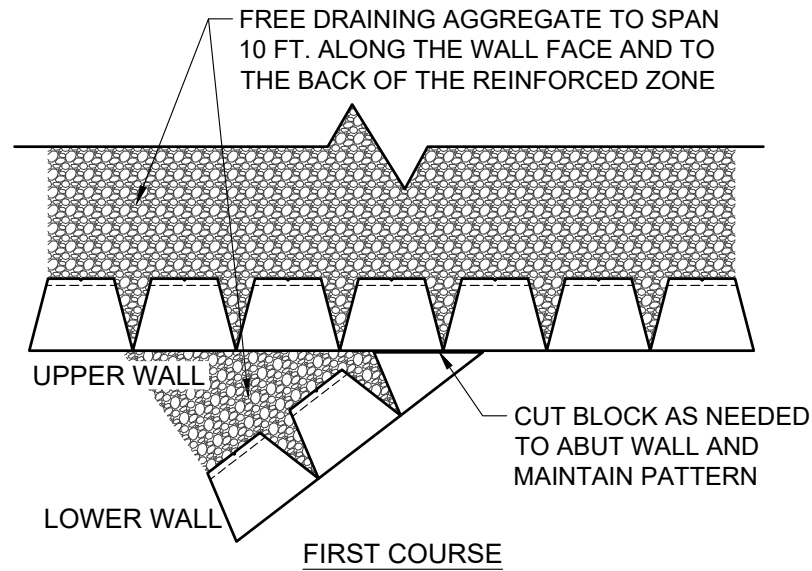
TYPICAL GUIDE RAIL CROSS SECTION

Scale:
3/8" = 1'-0"

Drawn by:
MAH

Date:
1/2/2026

Drawing number:
DM09



This drawing is for illustrative purposes only and should not be used for construction without the signature of a registered professional engineer.

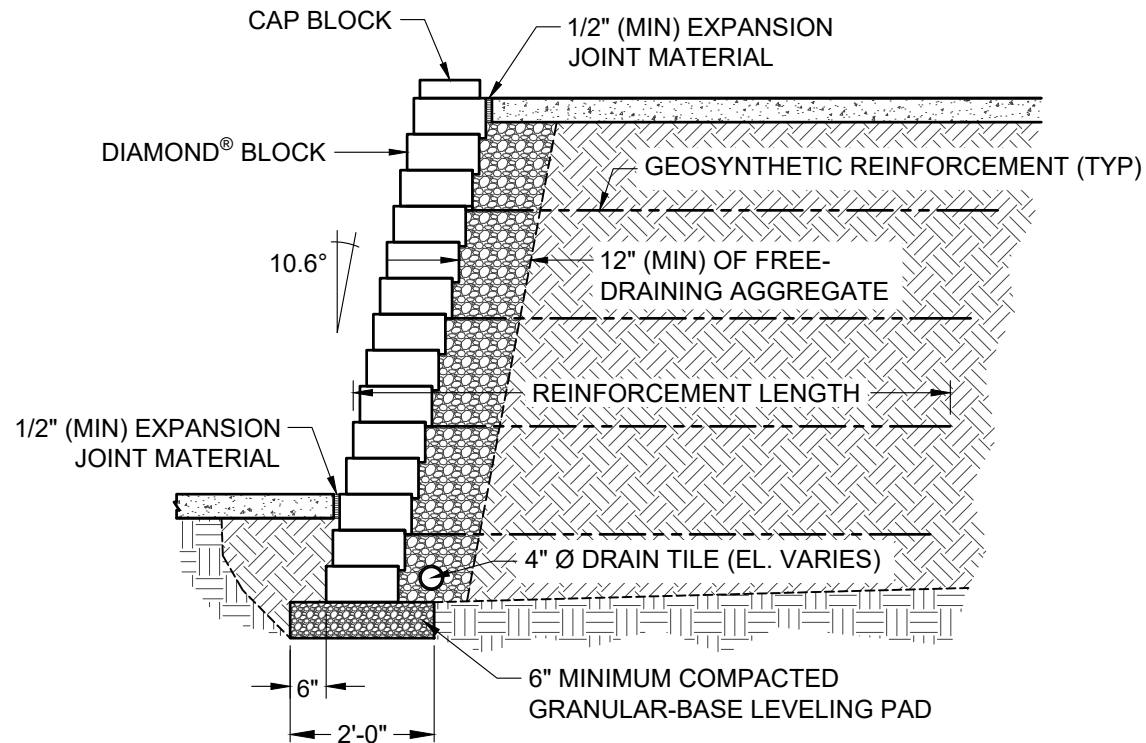
www.anchordiamond.com

© 2026 ANCHOR Engineering, LLC®
and © 2026 ANCHOR DIAMOND Group. All rights reserved

Diamond® Retaining Wall System

TYPICAL TERRACE CONNECTION

Scale:	3/8" = 1'-0"	Drawn by:	MAH
Date:	1/2/2026	Drawing number:	DM11



This drawing is for illustrative purposes only and should not be used for construction without the signature of a registered professional engineer.

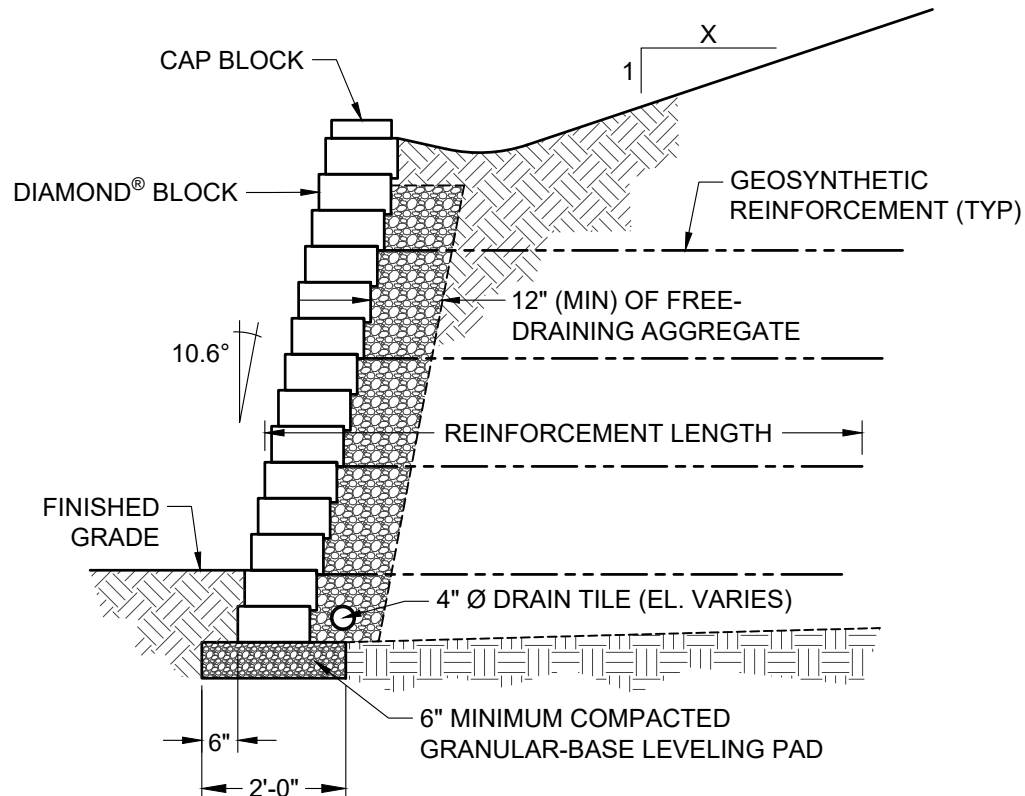
www.anchordiamond.com

© 2026 ANCHOR Engineering, LLC®
and © 2026 ANCHOR DIAMOND Group. All rights reserved

Diamond® Retaining Wall System

TYPICAL CROSS SECTION WITH SIDEWALK

Scale:	Drawn by:
3/8" = 1'-0"	MAH
Date:	Drawing number:
1/2/2026	DM12



This drawing is for illustrative purposes only and should not be used for construction without the signature of a registered professional engineer.

www.anchordiamond.com

© 2026 ANCHOR Engineering, LLC®
and © 2026 ANCHOR DIAMOND Group. All rights reserved

Diamond® Retaining Wall System

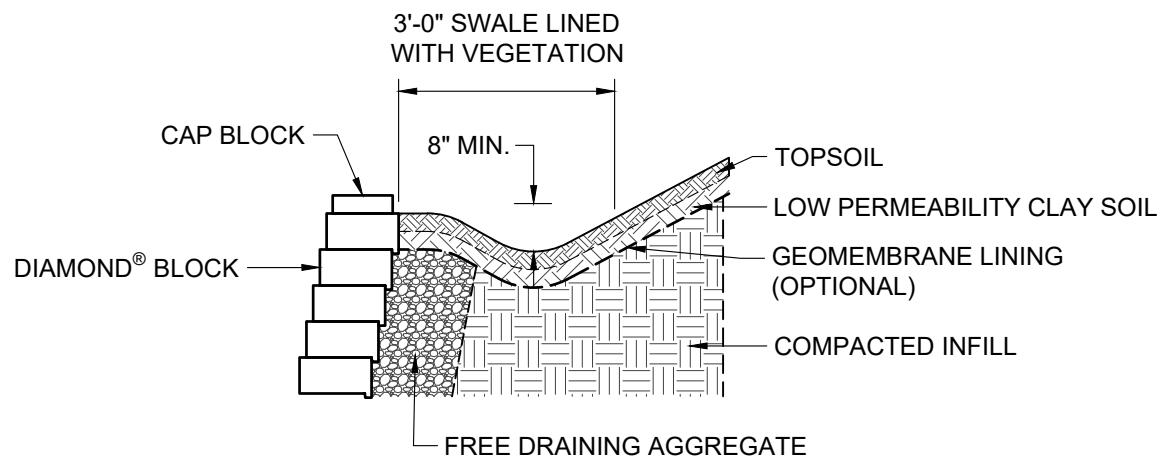
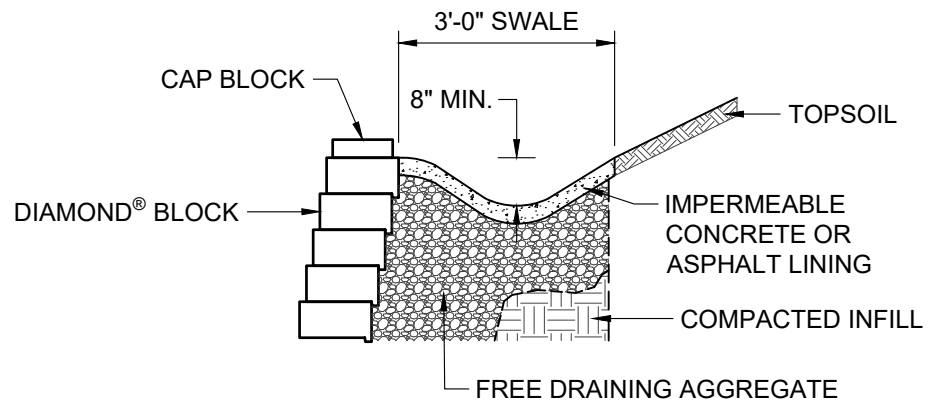
TYPICAL CROSS SECTION WITH CREST SLOPE

Scale:
3/8" = 1'-0"

Drawn by:
MAH

Date:
1/2/2026

Drawing number:
DM13



This drawing is for illustrative purposes only and should not be used for construction without the signature of a registered professional engineer.

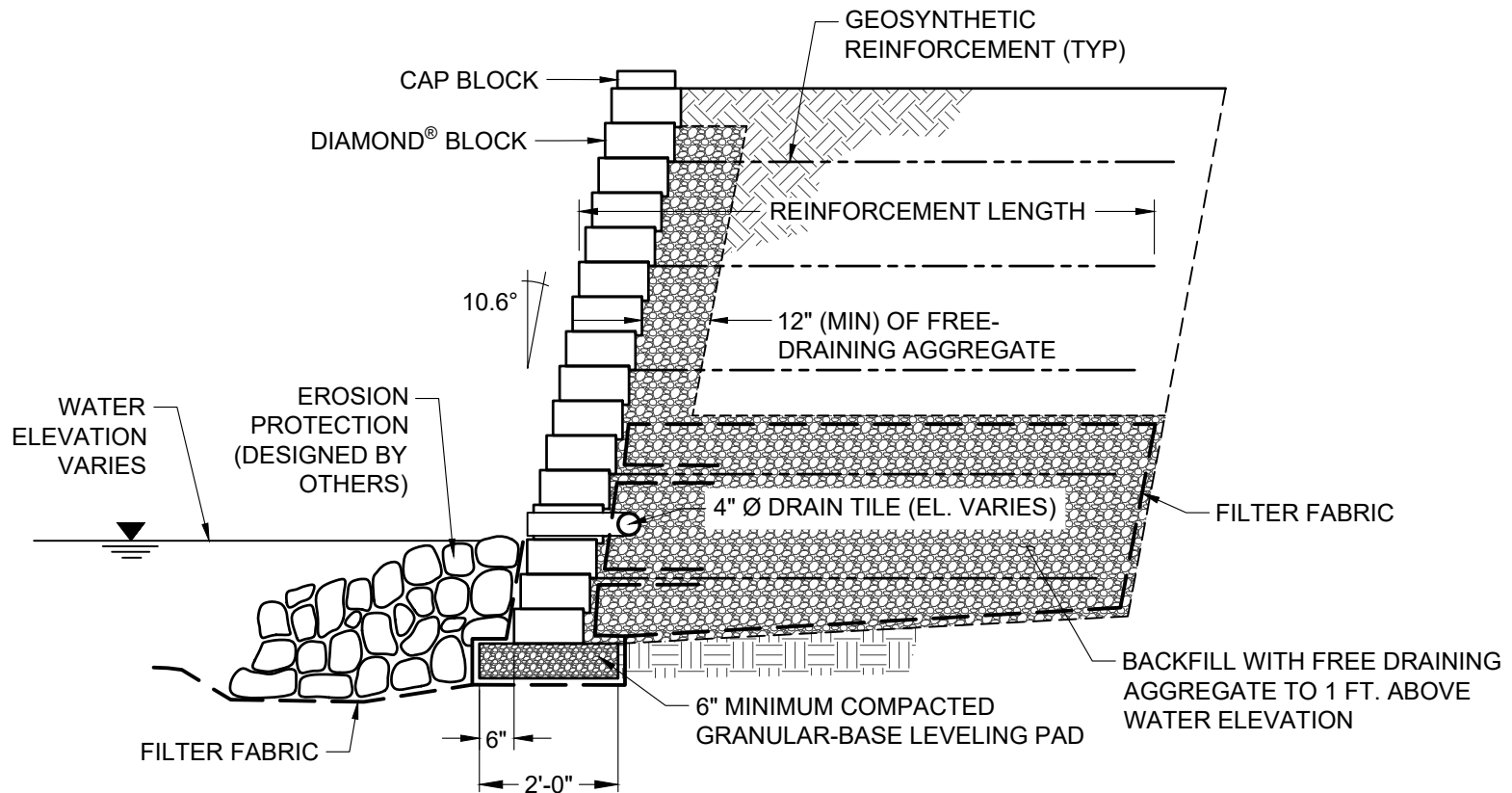
www.anchordiamond.com

© 2026 ANCHOR Engineering, LLC®
and © 2026 ANCHOR DIAMOND Group. All rights reserved

Diamond® Retaining Wall System

TYPICAL DRAINAGE SWALE CROSS SECTIONS

Scale:	Drawn by:
3/8" = 1'-0"	MAH
Date:	Drawing number:
1/2/2026	DM14



ANCHOR
DIAMOND®

This drawing is for illustrative purposes only and should not be used for construction without the signature of a registered professional engineer.

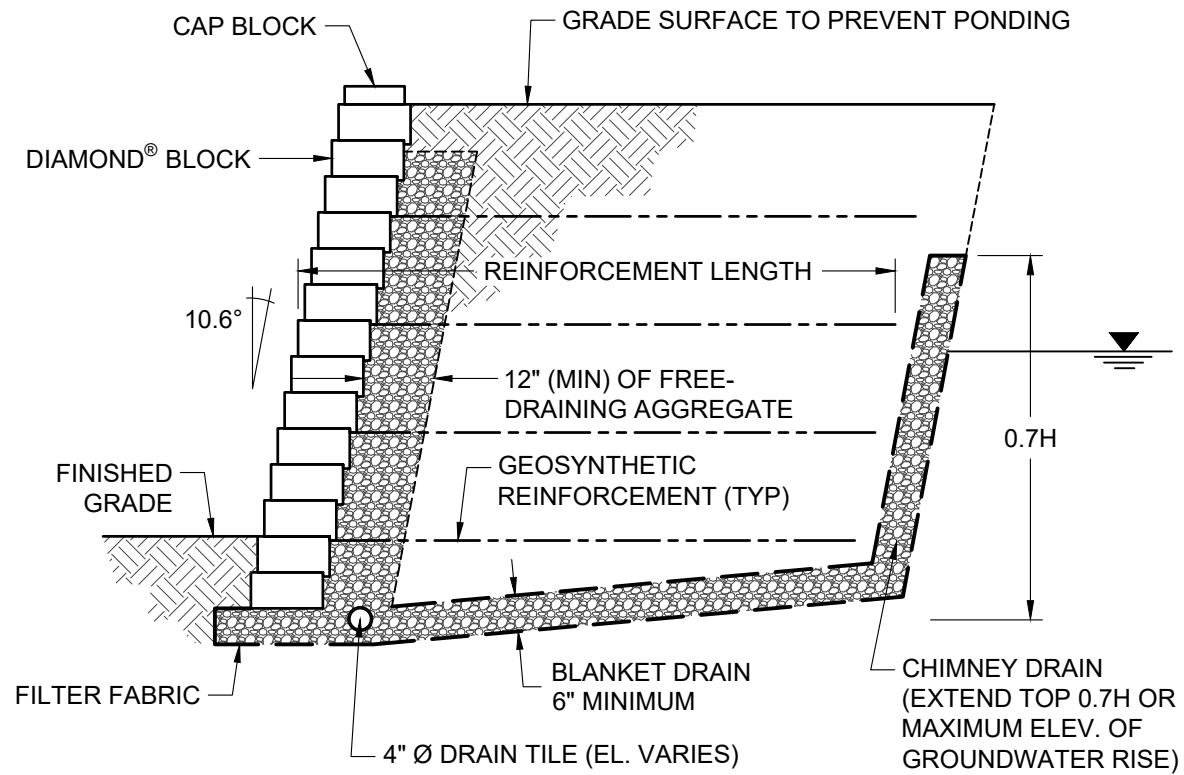
www.anchordiamond.com

© 2026 ANCHOR Engineering, LLC®
and © 2026 ANCHOR DIAMOND Group. All rights reserved

Diamond® Retaining Wall System

TYPICAL SHORELINE CROSS SECTION

Scale:	Drawn by:
3/8" = 1'-0"	MAH
Date:	Drawing number:
1/2/2026	DM15



ANCHOR
DIAMOND

This drawing is for illustrative purposes only and should not be used for construction without the signature of a registered professional engineer.

www.anchordiamond.com

© 2026 ANCHOR Engineering, LLC®
and © 2026 ANCHOR DIAMOND Group. All rights reserved

Diamond® Retaining Wall System

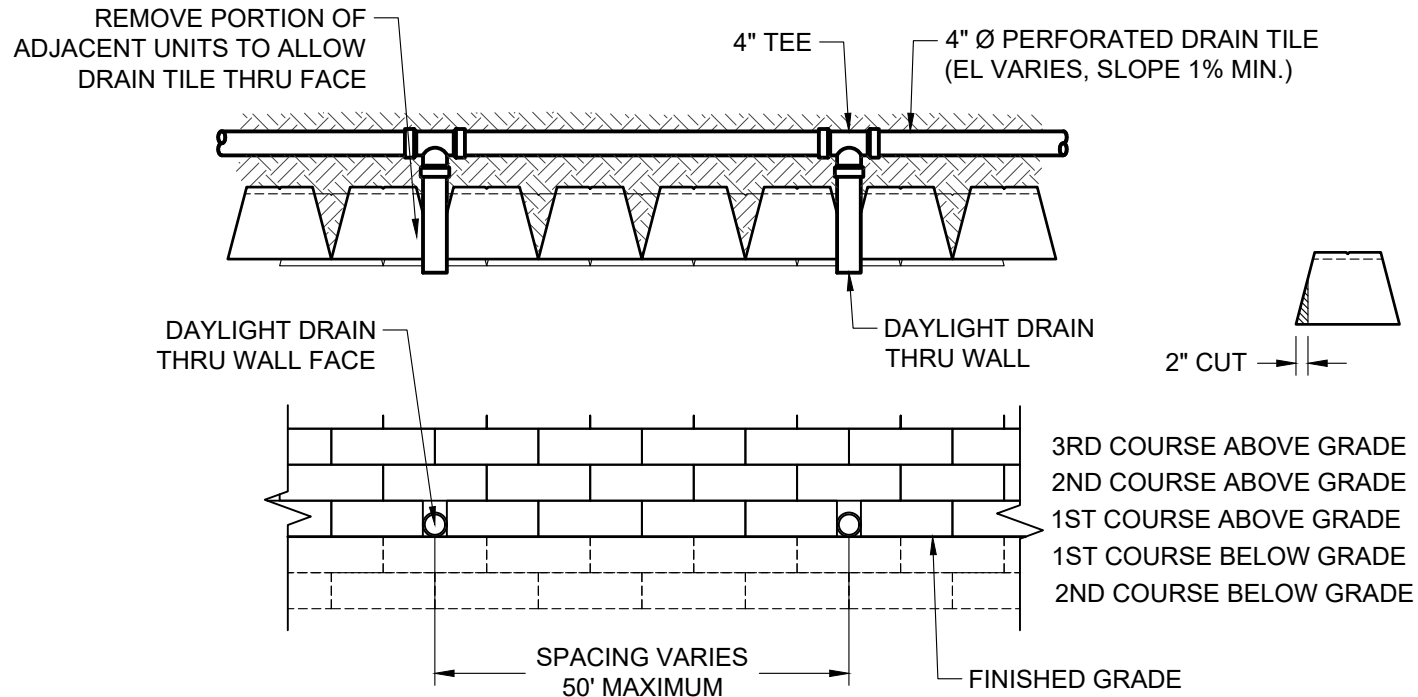
TYPICAL GROUNDWATER INTRUSION CROSS SECTION

Scale:
3/8" = 1'-0"

Drawn by:
MAH

Date:
1/2/2026

Drawing number:
DM16



This drawing is for illustrative purposes only and should not be used for construction without the signature of a registered professional engineer.

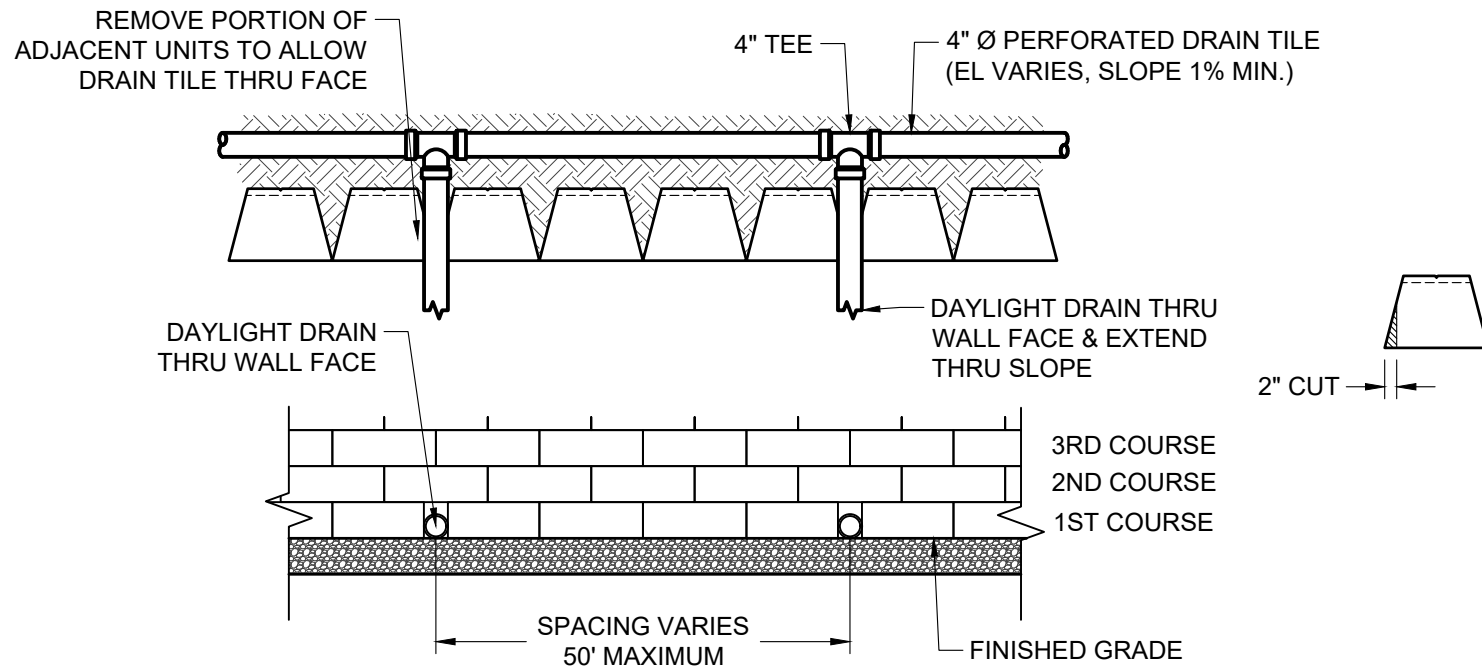
www.anchordiamond.com

© 2026 ANCHOR Engineering, LLC®
and © 2026 ANCHOR DIAMOND Group. All rights reserved

Diamond® Retaining Wall System

TYPICAL DRAIN PIPE THROUGH WALL FACE

Scale:	3/8" = 1'-0"	Drawn by:	MAH
Date:	1/2/2026	Drawing number:	DM17



This drawing is for illustrative purposes only and should not be used for construction without the signature of a registered professional engineer.

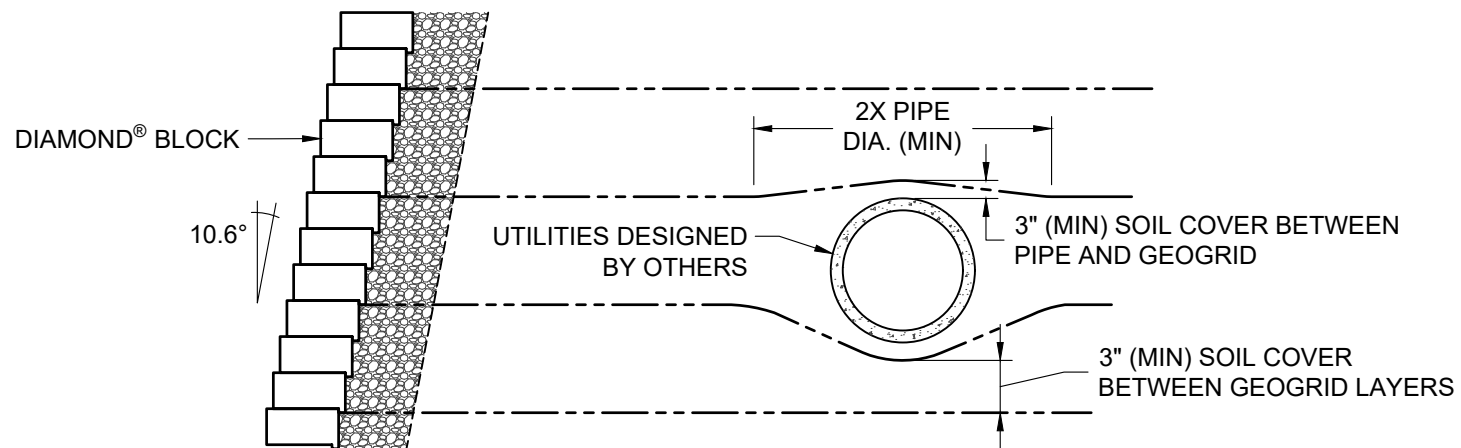
www.anchordiamond.com

© 2026 ANCHOR Engineering, LLC®
and © 2026 ANCHOR DIAMOND Group. All rights reserved

Diamond® Retaining Wall System

TYPICAL DRAIN PIPE THROUGH TOE SLOPE

Scale:	Drawn by:
3/8" = 1'-0"	MAH
Date:	Drawing number:
1/2/2026	DM18



ANCHOR
DIAMOND®

This drawing is for illustrative purposes only and should not be used for construction without the signature of a registered professional engineer.

www.anchordiamond.com

© 2026 ANCHOR Engineering, LLC®
and © 2026 ANCHOR DIAMOND Group. All rights reserved

Diamond® Retaining Wall System

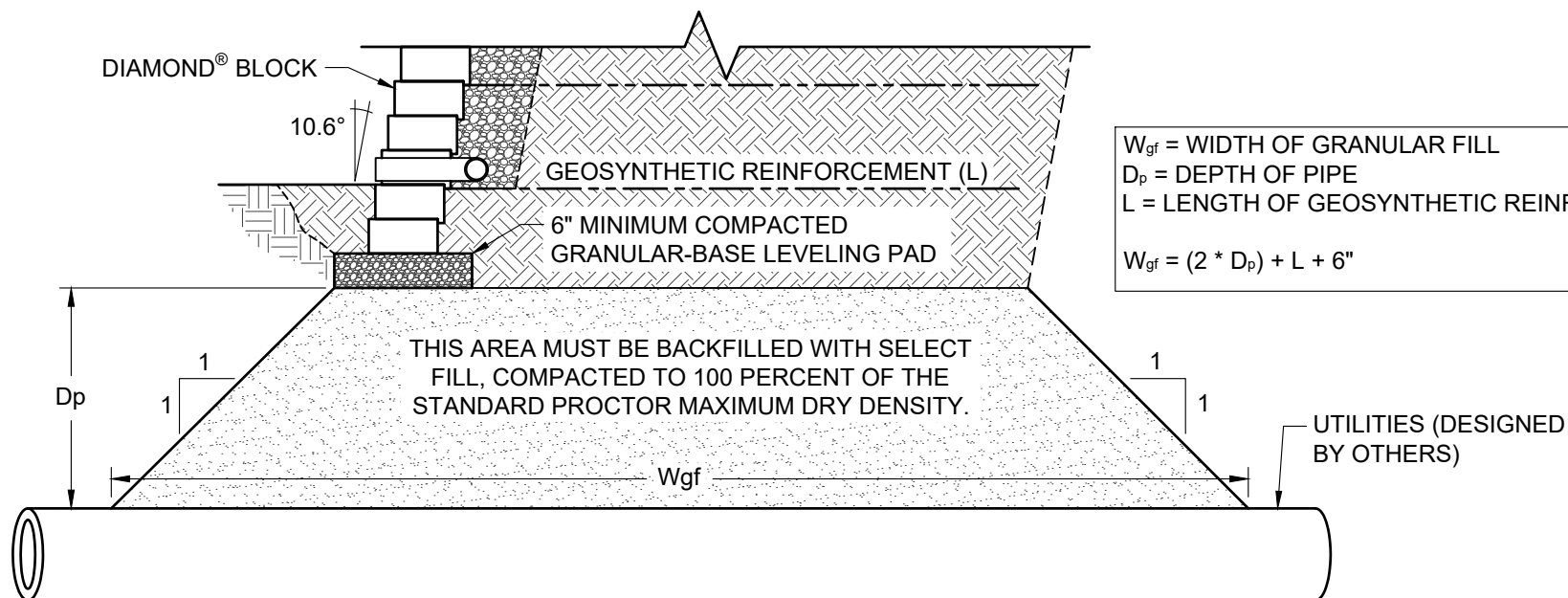
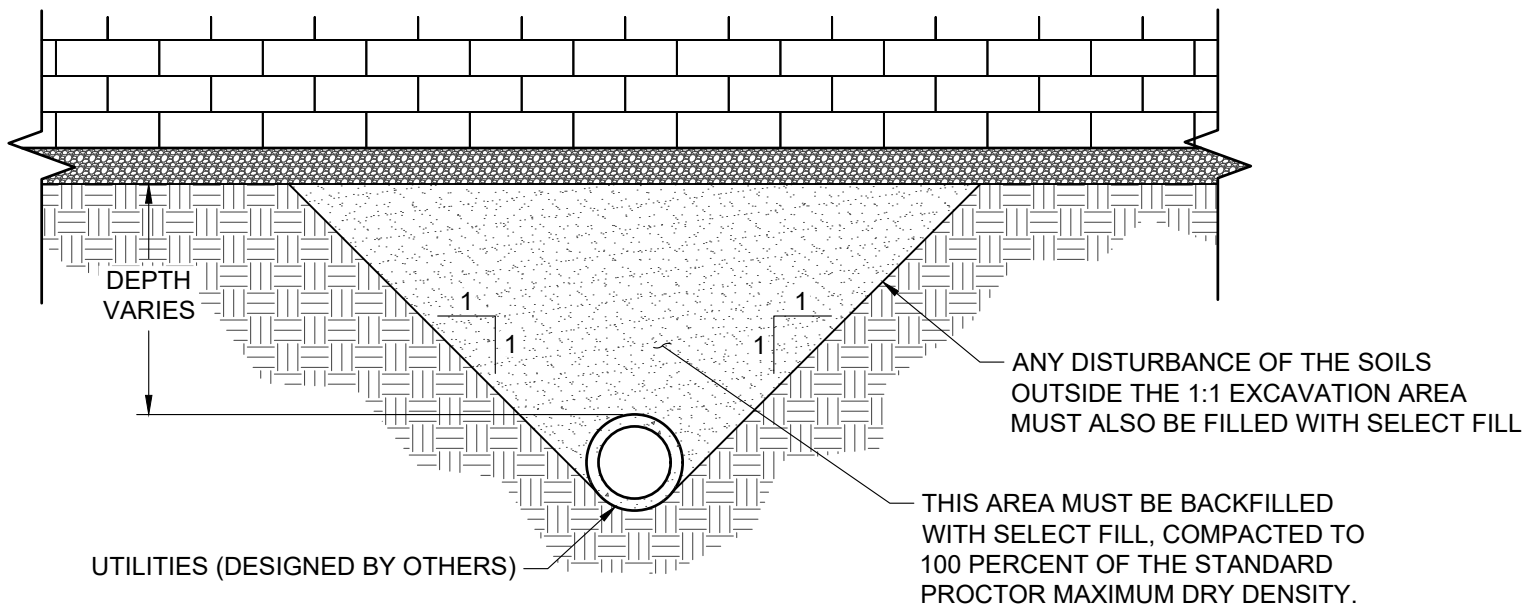
TYPICAL CROSS SECTION WITH PARALLEL UTILITIES

Scale:
3/8" = 1'-0"

Drawn by:
MAH

Date:
1/2/2026

Drawing number:
DM19



$$W_{gf} = (2 * D_p) + L + 6"$$

W_{gf} = WIDTH OF GRANULAR FILL
 D_p = DEPTH OF PIPE
 L = LENGTH OF GEOSYNTHETIC REINFORCEMENT



ANCHOR
DIAMOND

This drawing is for illustrative purposes only and should not be used for construction without the signature of a registered professional engineer.

www.anchordiamond.com

© 2026 ANCHOR Engineering, LLC®
and © 2026 ANCHOR DIAMOND Group. All rights reserved

Diamond® Retaining Wall System

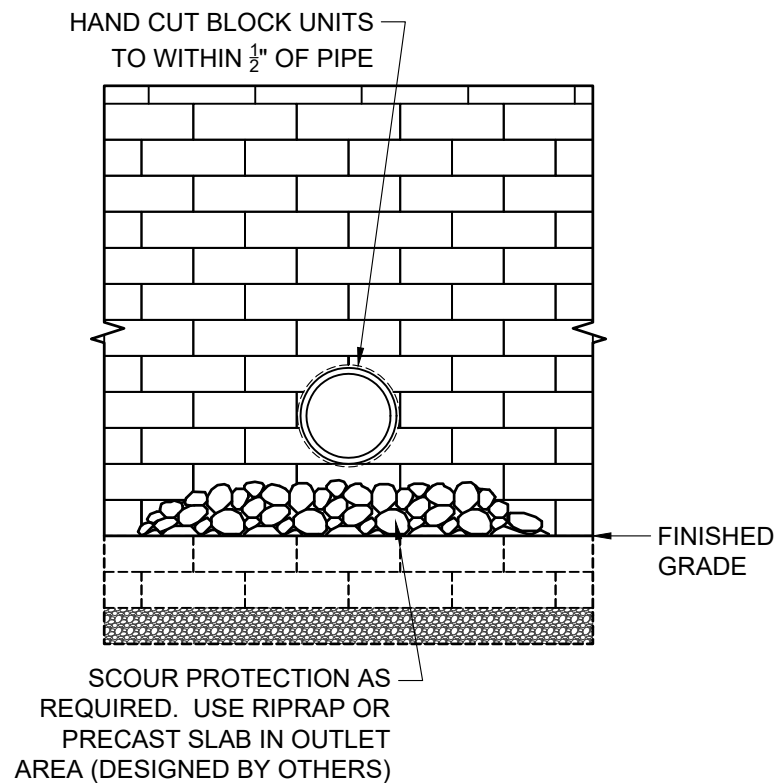
TYPICAL DETAILS FOR UTILITIES BELOW WALL

Scale:
3/8" = 1'-0"

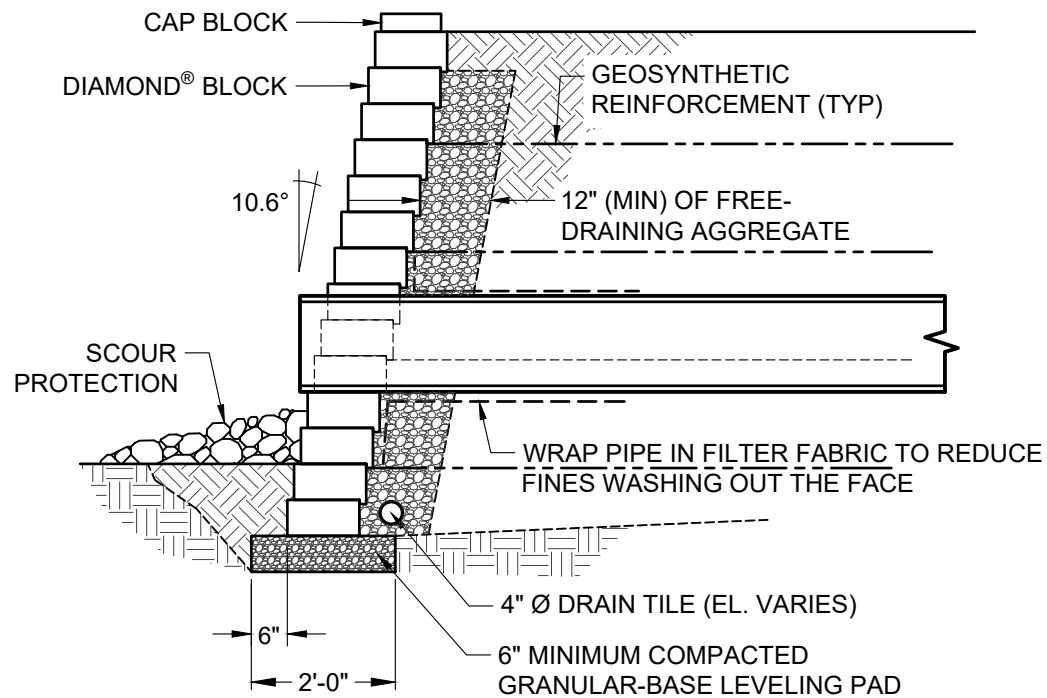
Date:
1/2/2026

Drawn by:
MAH

Drawing number:
DM20



FACE VIEW



SECTION VIEW



This drawing is for illustrative purposes only and should not be used for construction without the signature of a registered professional engineer.

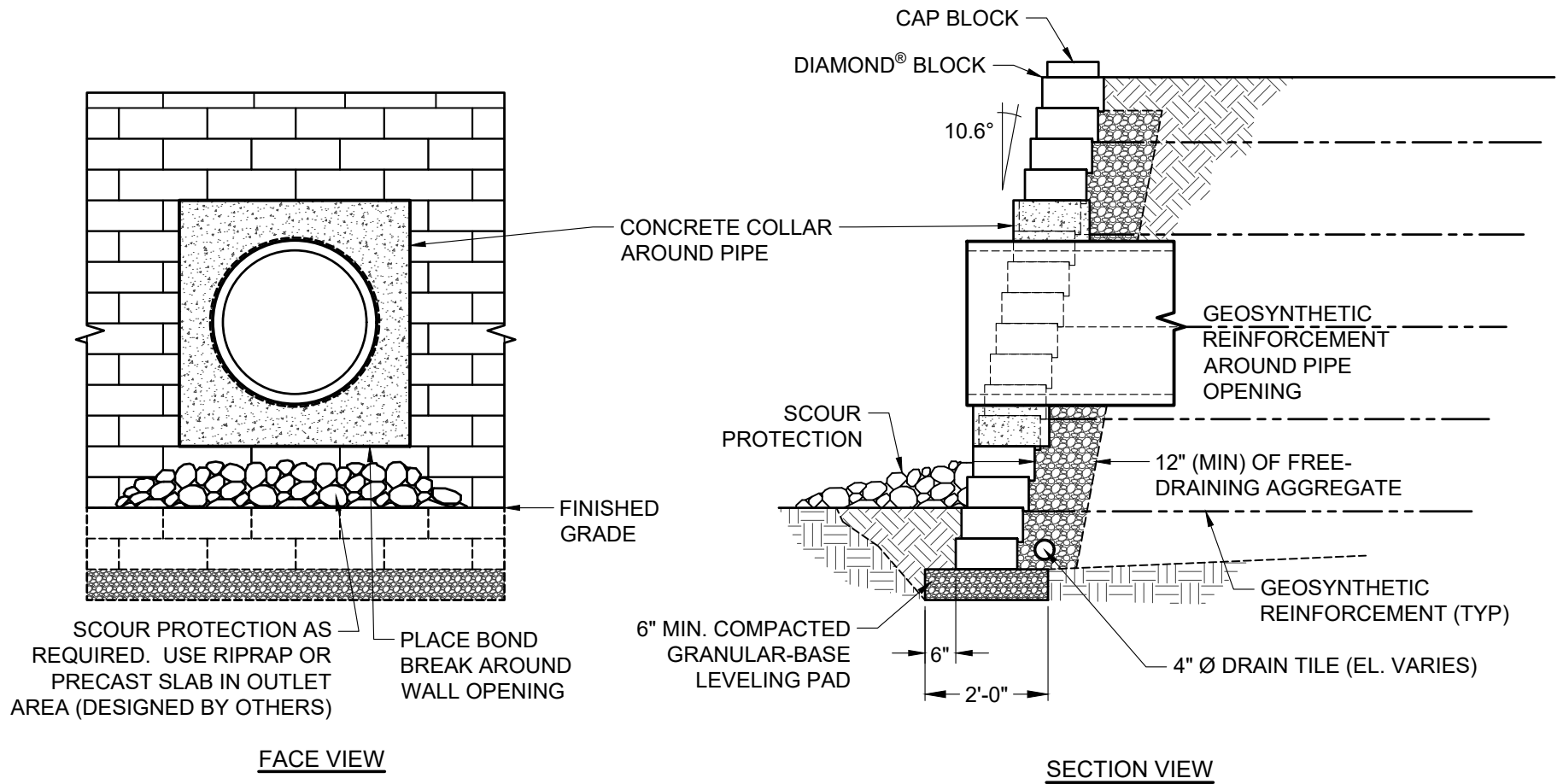
www.anchordiamond.com

© 2026 ANCHOR Engineering, LLC®
and © 2026 ANCHOR DIAMOND Group. All rights reserved

Diamond® Retaining Wall System

TYPICAL DETAILS FOR SMALL UTILITIES THROUGH WALL

Scale: 3/8" = 1'-0"	Drawn by: MAH
Date: 1/2/2026	Drawing number: DM21



This drawing is for illustrative purposes only and should not be used for construction without the signature of a registered professional engineer.

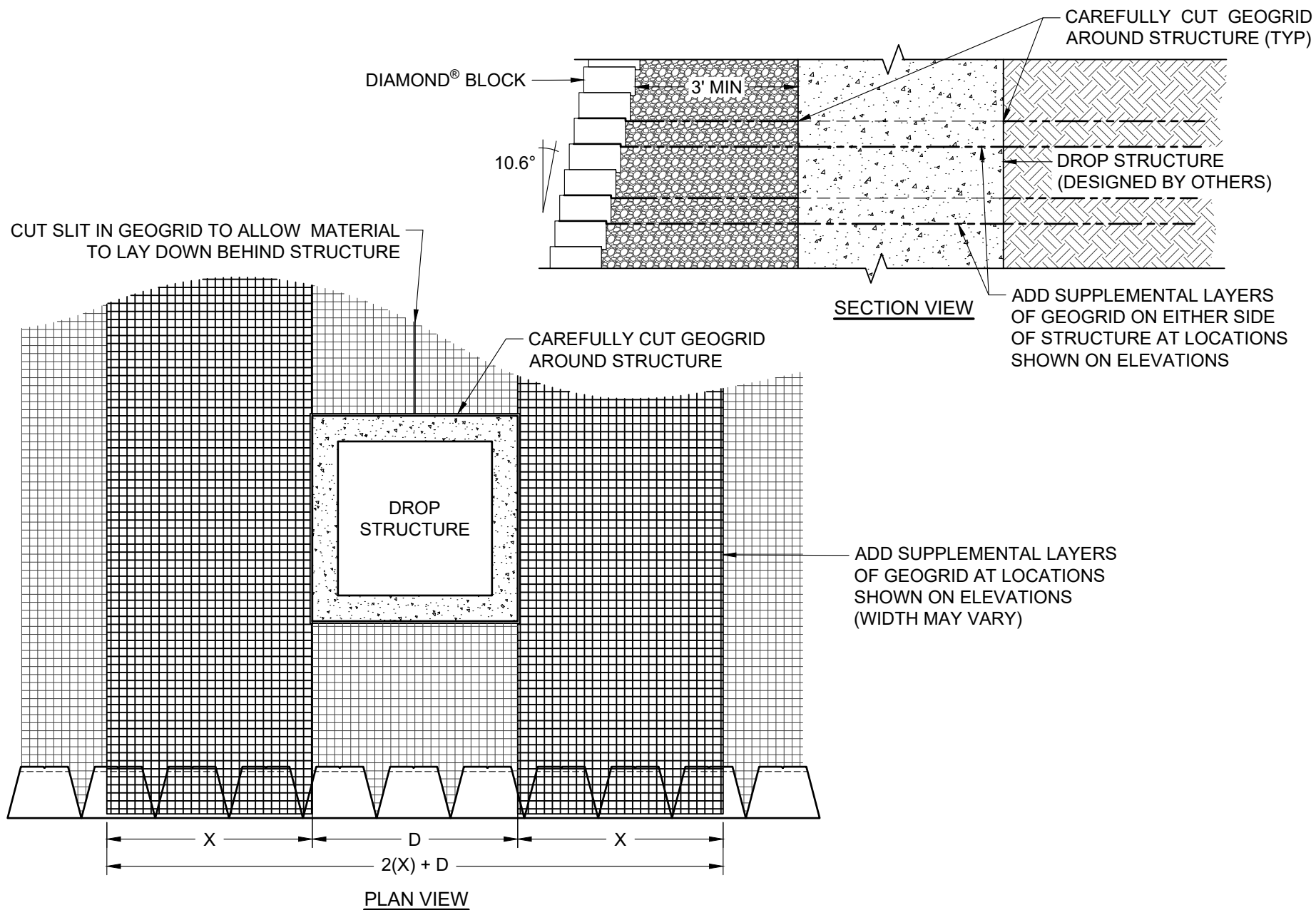
www.anchordiamond.com

© 2026 ANCHOR Engineering, LLC®
and © 2026 ANCHOR DIAMOND Group. All rights reserved

Diamond® Retaining Wall System

TYPICAL DETAILS FOR LARGE UTILITIES THROUGH WALL

Scale:	3/8" = 1'-0"	Drawn by:	MAH
Date:	1/2/2026	Drawing number:	DM22



This drawing is for illustrative purposes only and should not be used for construction without the signature of a registered professional engineer.

www.anchordiamond.com

© 2026 ANCHOR Engineering, LLC®
and © 2026 ANCHOR DIAMOND Group. All rights reserved

Diamond® Retaining Wall System

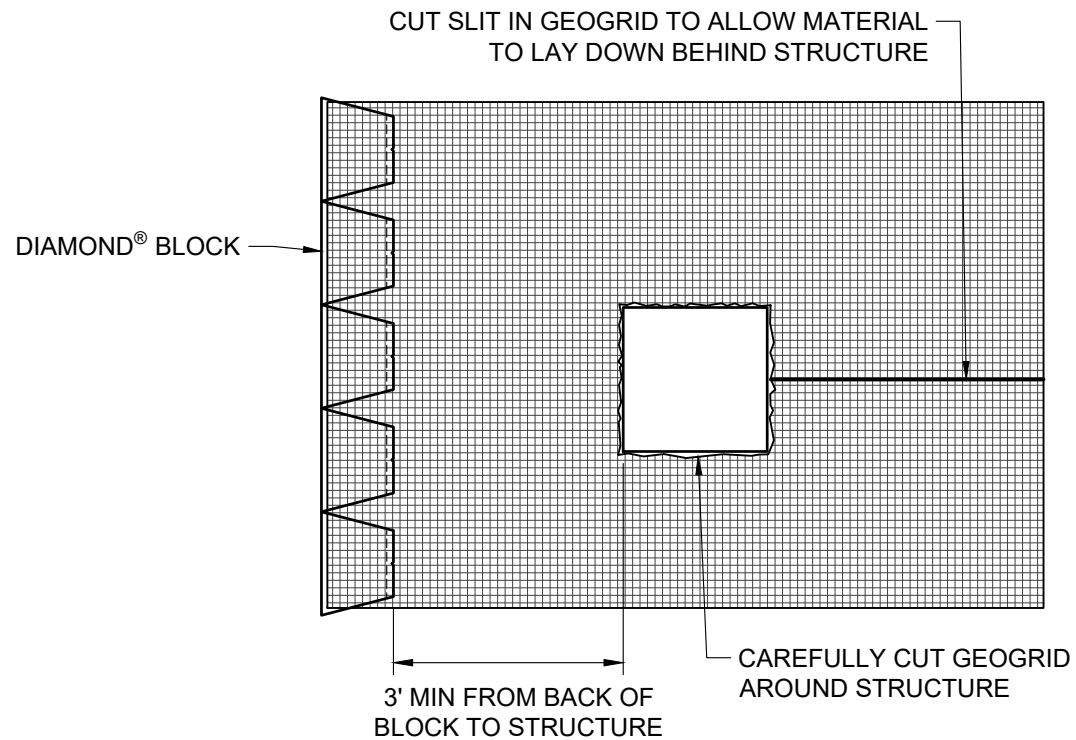
TYPICAL DETAILS DROP STRUCTURE BEHIND WALL

Scale:
3/8" = 1'-0"

Drawn by:
MAH

Date:
1/2/2026

Drawing number:
DM23



This drawing is for illustrative purposes only and should not be used for construction without the signature of a registered professional engineer.

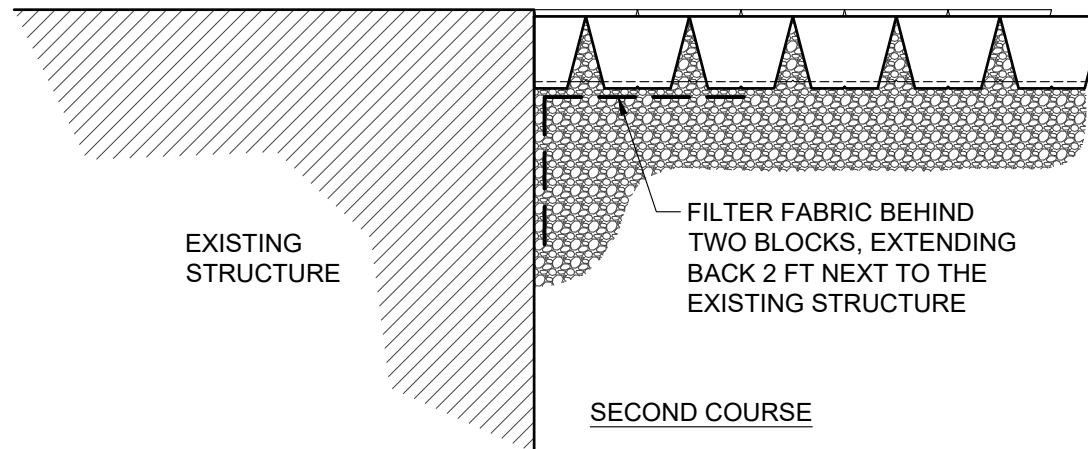
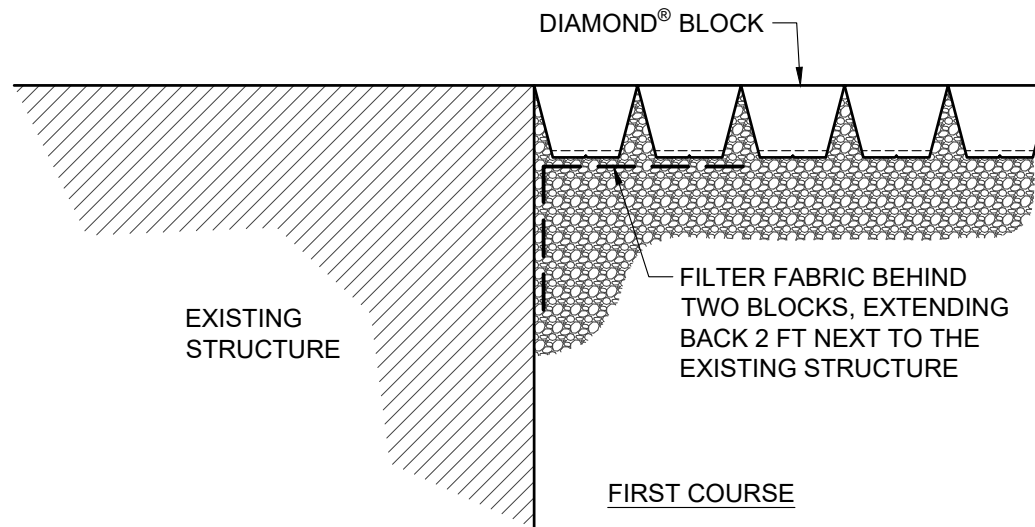
www.anchordiamond.com

© 2026 ANCHOR Engineering, LLC®
and © 2026 ANCHOR DIAMOND Group. All rights reserved

Diamond® Retaining Wall System

TYPICAL DETAIL ALTERNATE DROP STRUCTURE BEHIND WALL

Scale:	Drawn by:
3/8" = 1'-0"	MAH
Date:	Drawing number:
1/2/2026	DM24



This drawing is for illustrative purposes only and should not be used for construction without the signature of a registered professional engineer.

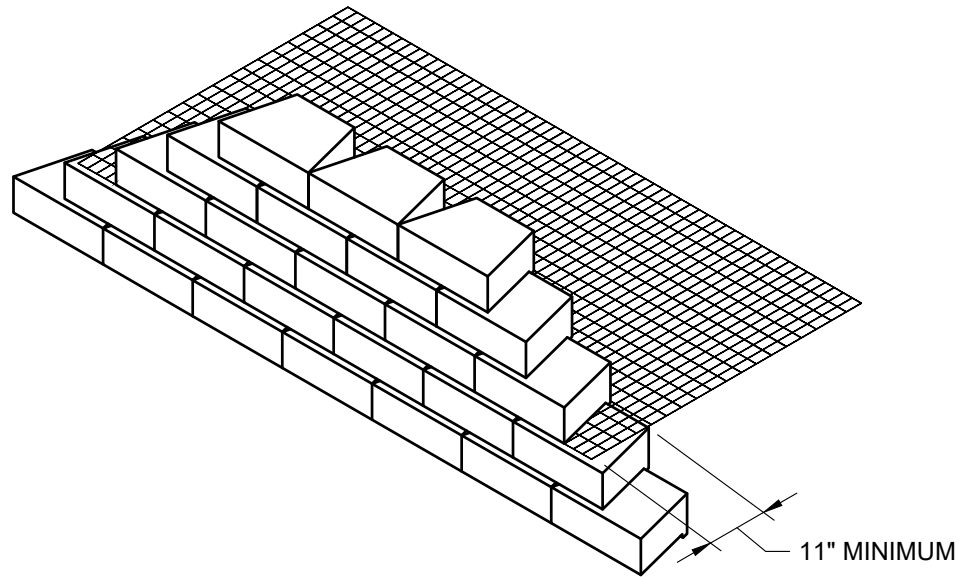
www.anchordiamond.com

© 2026 ANCHOR Engineering, LLC®
and © 2026 ANCHOR DIAMOND Group. All rights reserved

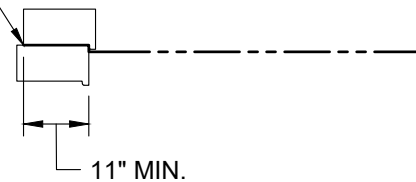
Diamond® Retaining Wall System

TYPICAL DETAIL WALL ABUTTING STRUCTURE

Scale:	Drawn by:
3/8" = 1'-0"	MAH
Date:	Drawing number:
1/2/2026	DM25



EXTEND GEOSYNTHETIC
REINFORCEMENT TO WITHIN 1"
OF THE LOWER BLOCK FACE



This drawing is for illustrative purposes only and should not be used for construction without the signature of a registered professional engineer.

www.anchordiamond.com

© 2026 ANCHOR Engineering, LLC®
and © 2026 ANCHOR DIAMOND Group. All rights reserved

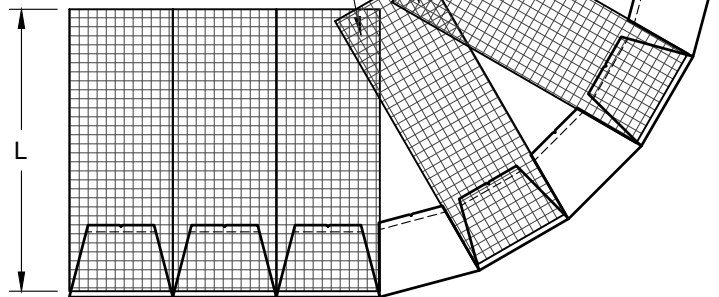
Diamond® Retaining Wall System

TYPICAL REINFORCEMENT CONNECTION DETAIL

Scale:	Drawn by:
N.T.S.	MAH
Date:	Drawing number:
1/2/2026	DM26

STEP 1 - PLACE REINFORCEMENT SO LITTLE OR NO OVERLAP OCCURS IN THE RADIUS AREA. IF OVERLAP OCCURS, PLACE 2 TO 3 INCHES OF SAND BETWEEN THE REINFORCEMENT LAYERS.

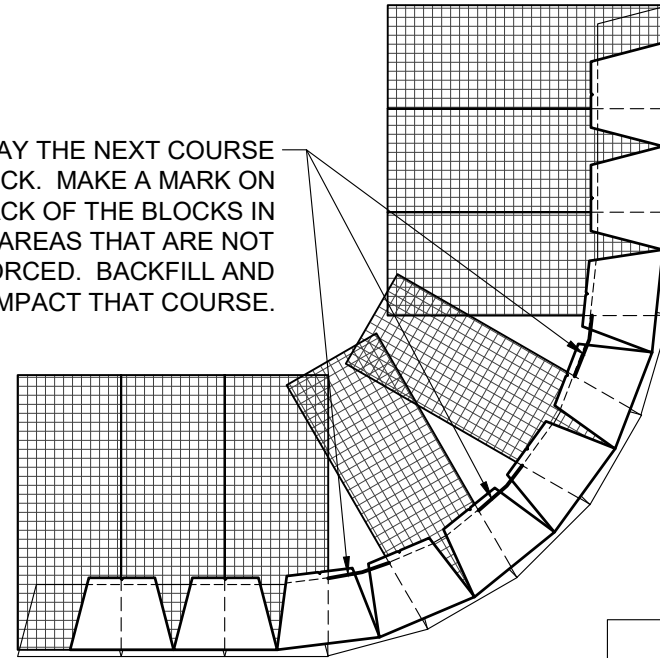
2"-3" OF SOIL FILL REQUIRED BETWEEN OVERLAPPED REINFORCEMENT FOR PROPER SOIL AND REINFORCEMENT INTERACTION



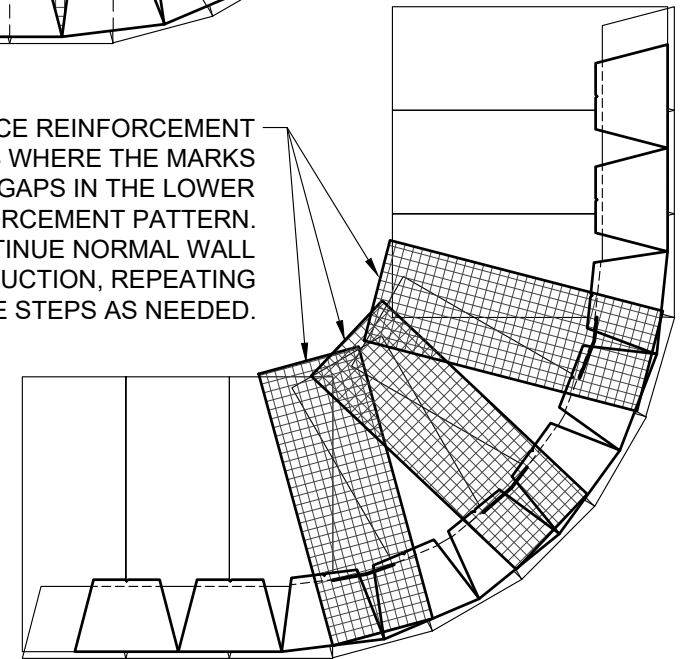
MINIMUM RADIUS
4 FT. TO FACE

PRINCIPLE
REINFORCEMENT
DIRECTION

STEP 2: LAY THE NEXT COURSE OF BLOCK. MAKE A MARK ON THE BACK OF THE BLOCKS IN THE AREAS THAT ARE NOT REINFORCED. BACKFILL AND COMPACT THAT COURSE.



STEP 3: PLACE REINFORCEMENT IN THE AREAS WHERE THE MARKS SHOW GAPS IN THE LOWER REINFORCEMENT PATTERN. CONTINUE NORMAL WALL CONSTRUCTION, REPEATING THESE STEPS AS NEEDED.



This drawing is for illustrative purposes only and should not be used for construction without the signature of a registered professional engineer.

www.anchordiamond.com

© 2026 ANCHOR Engineering, LLC®
and © 2026 ANCHOR DIAMOND Group. All rights reserved

Diamond® Retaining Wall System

TYPICAL DETAIL OUTSIDE CURVES

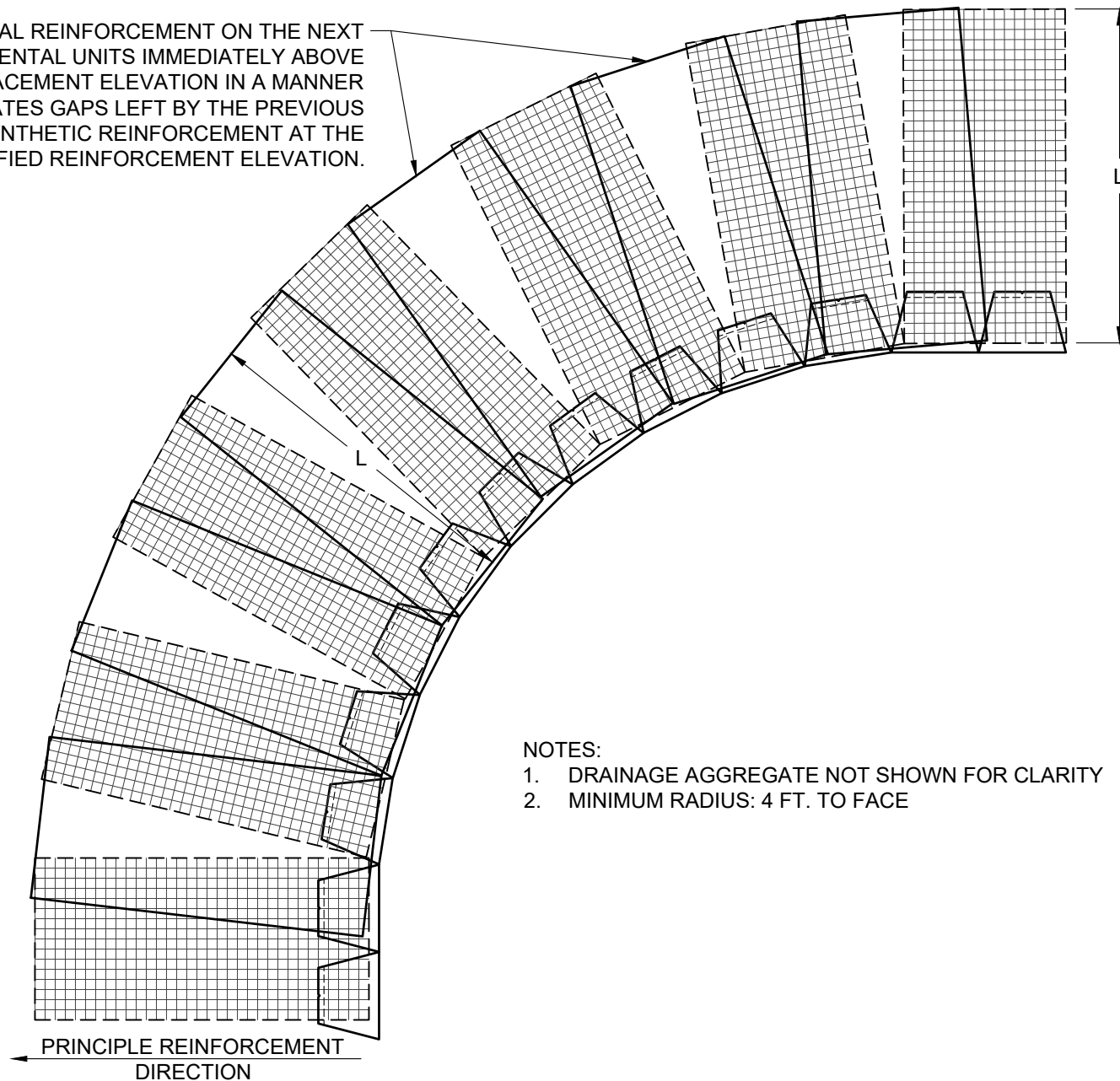
Scale:
3/8" = 1'-0"

Drawn by:
MAH

Date:
1/2/2026

Drawing number:
DM27

PLACE ADDITIONAL REINFORCEMENT ON THE NEXT COURSE OF SEGMENTAL UNITS IMMEDIATELY ABOVE THE SPECIFIED PLACEMENT ELEVATION IN A MANNER THAT ELIMINATES GAPS LEFT BY THE PREVIOUS LAYER OF GEOSYNTHETIC REINFORCEMENT AT THE SPECIFIED REINFORCEMENT ELEVATION.



NOTES:

1. DRAINAGE AGGREGATE NOT SHOWN FOR CLARITY
2. MINIMUM RADIUS: 4 FT. TO FACE



ANCHOR
DIAMOND

This drawing is for illustrative purposes only and should not be used for construction without the signature of a registered professional engineer.

www.anchordiamond.com

© 2026 ANCHOR Engineering, LLC®
and © 2026 ANCHOR DIAMOND Group. All rights reserved

Diamond® Retaining Wall System

TYPICAL DETAIL INSIDE CURVES

Scale:
3/8" = 1'-0"

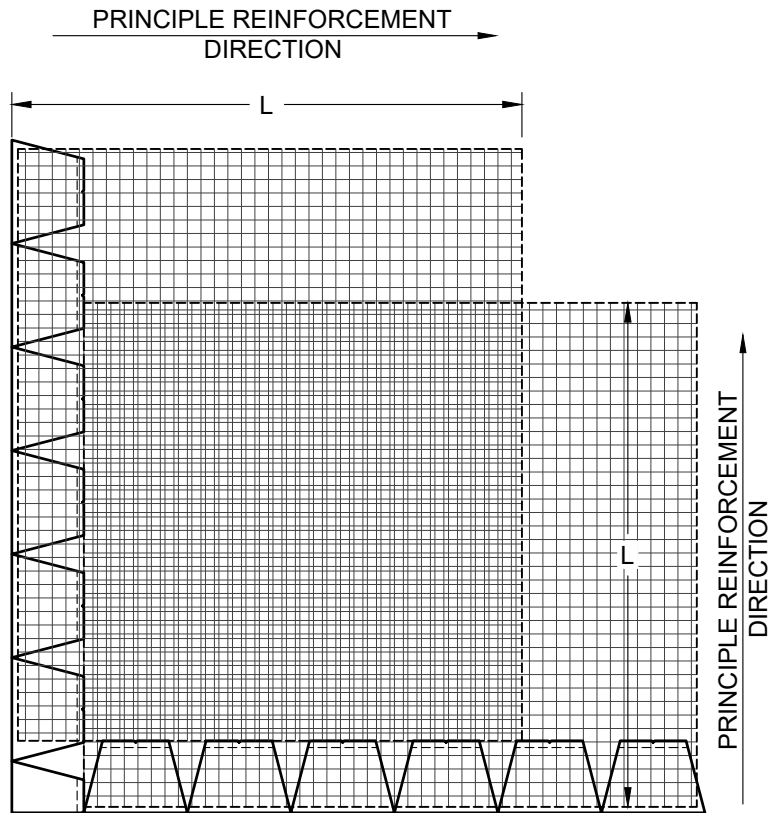
Drawn by:
MAH

Date:
1/2/2026

Drawing number:
DM28

NOTE:

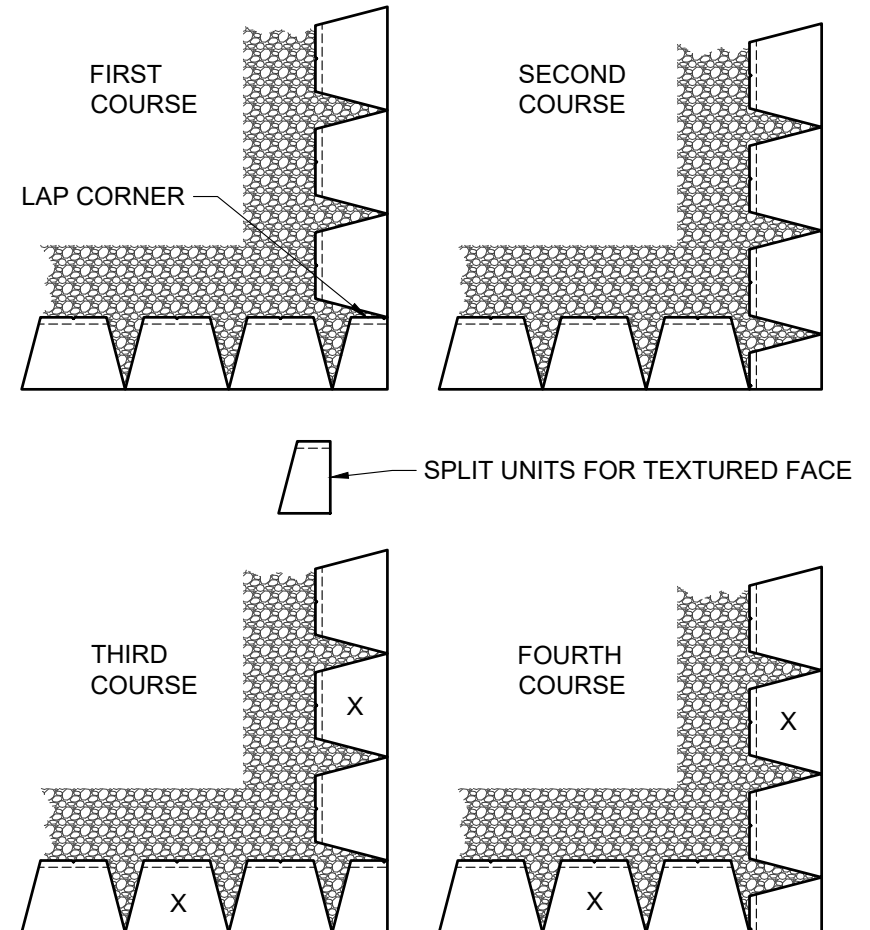
IN THE "CROSS-OVER AREA" OF REINFORCEMENT, ONE OF THE LAYERS OF REINFORCEMENT SHOULD BE LOWERED OR RAISED ONE COURSE TO ALLOW PLACEMENT OF THE REINFORCEMENT WITH THE PRINCIPLE REINFORCEMENT STRENGTH DIRECTION PROPERLY ORIENTATED. THE REINFORCEMENT SHOULD NOT EXTEND INTO THE SEGMENTAL RETAINING WALL UNITS ON THE RETURN LEG OF THE 90-DEGREE CORNER.



GEOGRID LAYOUT

NOTE:

USE ADHESIVE ON EXPOSED PARTIAL UNITS. CUT UNITS (X) TO MAINTAIN RUNNING BOND.



BLOCK LAYOUT



This drawing is for illustrative purposes only and should not be used for construction without the signature of a registered professional engineer.

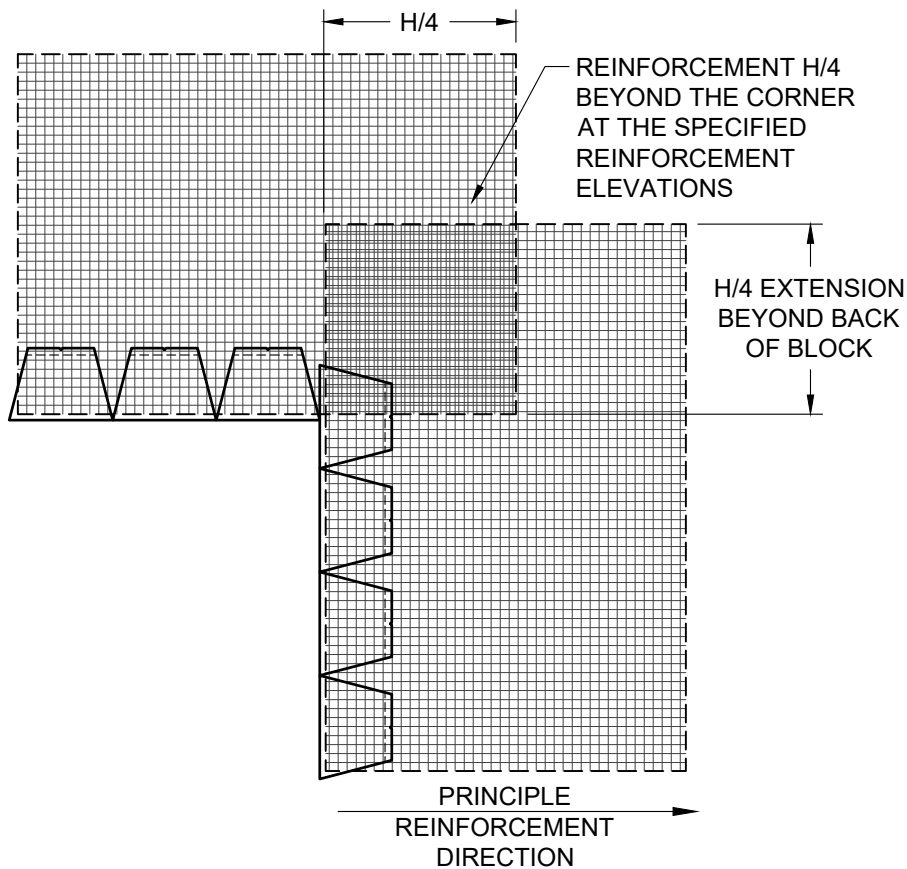
www.anchordiamond.com

© 2026 ANCHOR Engineering, LLC®
and © 2026 ANCHOR DIAMOND Group. All rights reserved

Diamond® Retaining Wall System

TYPICAL DETAIL OUTSIDE CORNERS

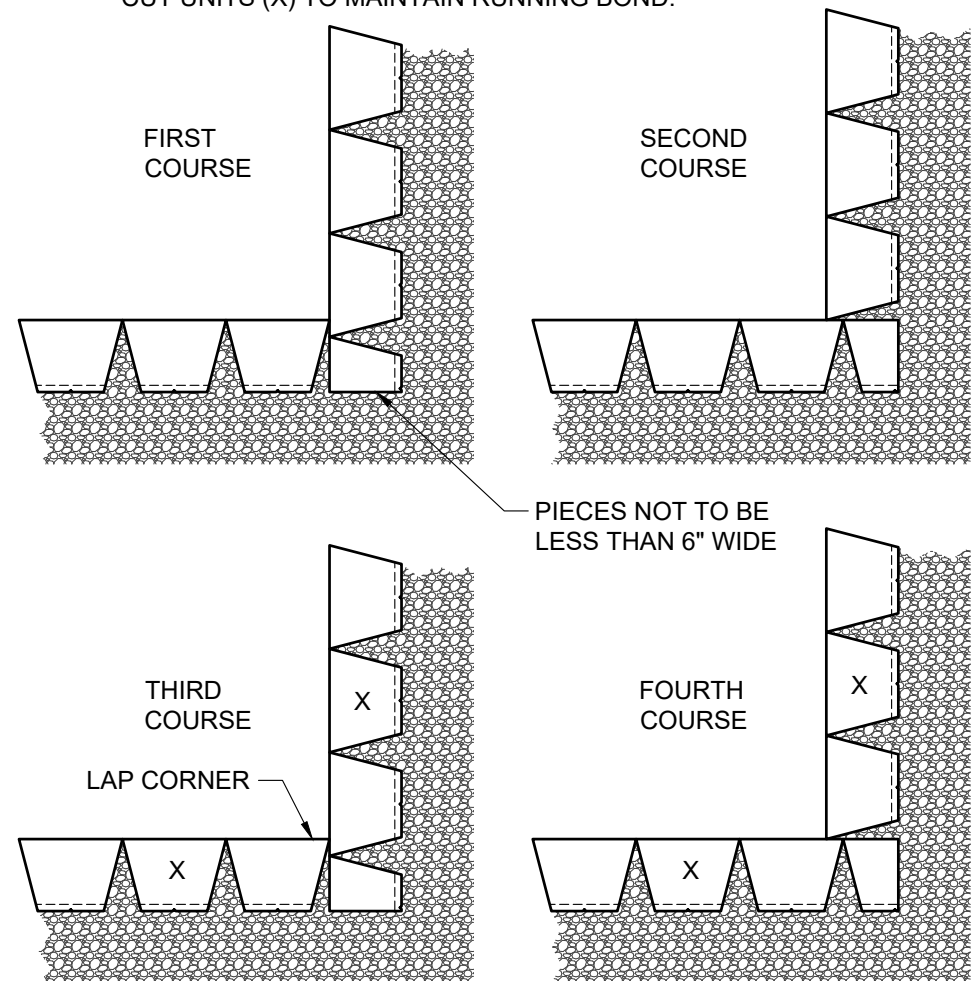
Scale: 3/8" = 1'-0"	Drawn by: MAH
Date: 1/2/2026	Drawing number: DM29



NOTE: PLACEMENT OF REINFORCEMENT EXTENSION ON SPECIFIED REINFORCEMENT ELEVATIONS.

GEOGRID LAYOUT

NOTE:
USE ADHESIVE ON EXPOSED PARTIAL UNITS.
CUT UNITS (X) TO MAINTAIN RUNNING BOND.



BLOCK LAYOUT



This drawing is for illustrative purposes only and should not be used for construction without the signature of a registered professional engineer.

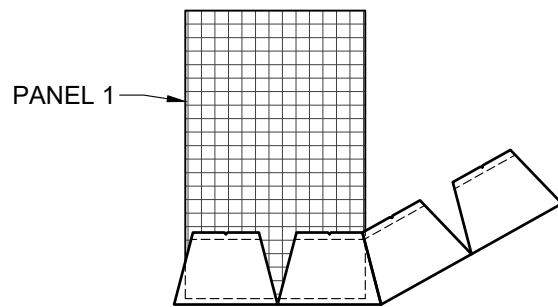
www.anchordiamond.com

© 2026 ANCHOR Engineering, LLC®
and © 2026 ANCHOR DIAMOND Group. All rights reserved

Diamond® Retaining Wall System

TYPICAL DETAIL INSIDE CORNERS

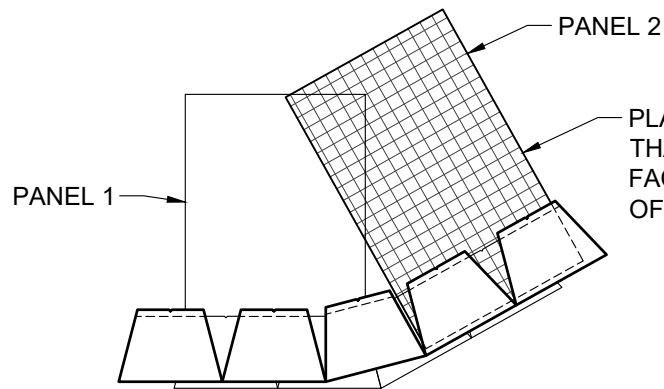
Scale:	Drawn by:
3/8" = 1'-0"	MAH
Date:	Drawing number:
1/2/2026	DM30



COURSE A

NOTES:

1. ALTERNATE COURSES "A" & "B" AS NEEDED TO FULL HEIGHT OF WALL.
2. MODIFY UNITS AS NEEDED TO MAINTAIN RUNNING BOND.
3. ADHERE ALL PARTIAL UNITS WITH CONSTRUCTION GRADE ADHESIVE.
4. ADJUST PLACEMENT IN FIELD TO ACHIEVE DESIRED ANGLE.
5. FREE-DRAINING AGGREGATE (NOT SHOWN) TO SPAN 10 FT. ALONG THE WALL FACE AND TO THE BACK OF THE REINFORCED ZONE.



PLACE GEOGRID REINFORCEMENT SUCH THAT ITS ALIGNMENT IS PERPENDICULAR TO FACE OF WALL AND THAT 100% COVERAGE OF REINFORCED FILL IS PROVIDED.

COURSE B



This drawing is for illustrative purposes only and should not be used for construction without the signature of a registered professional engineer.

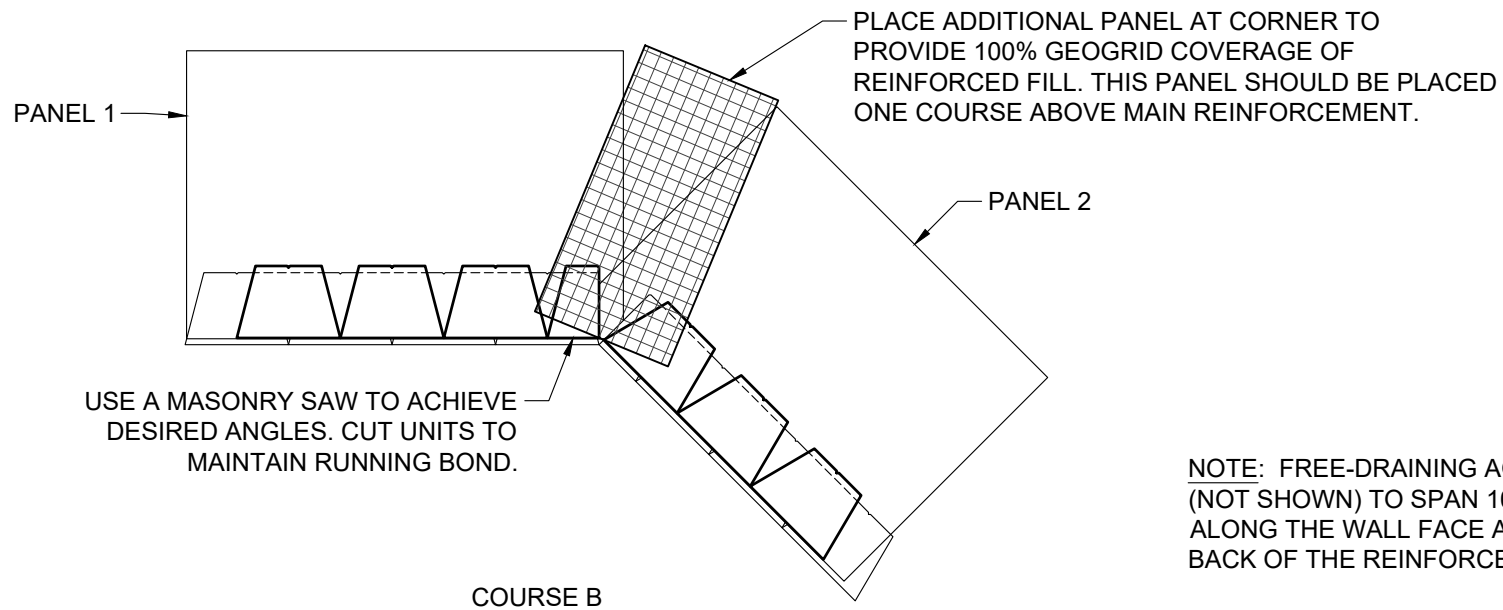
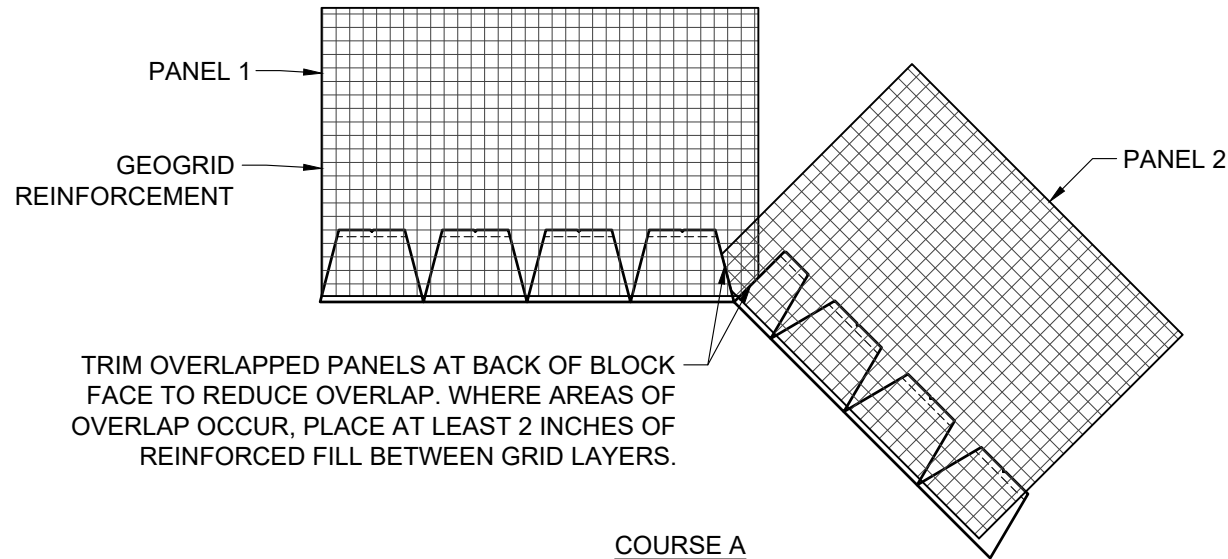
www.anchordiamond.com

© 2026 ANCHOR Engineering, LLC®
and © 2026 ANCHOR DIAMOND Group. All rights reserved

Diamond® Retaining Wall System

TYPICAL DETAIL OUTSIDE ANGLED CORNERS

Scale:	Drawn by:
3/8" = 1'-0"	MAH
Date:	Drawing number:
1/2/2026	DM31



NOTE: FREE-DRAINING AGGREGATE (NOT SHOWN) TO SPAN 10 FT. ALONG THE WALL FACE AND TO THE BACK OF THE REINFORCED ZONE



This drawing is for illustrative purposes only and should not be used for construction without the signature of a registered professional engineer.

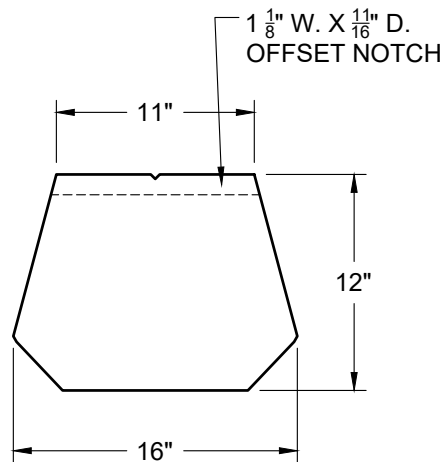
www.anchordiamond.com

© 2026 ANCHOR Engineering, LLC®
and © 2026 ANCHOR DIAMOND Group. All rights reserved

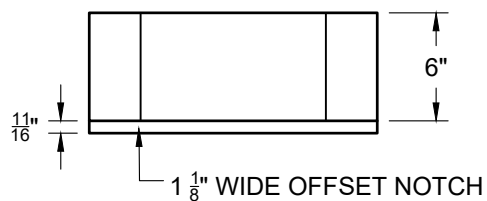
Diamond® Retaining Wall System

TYPICAL DETAIL INSIDE ANGLED CORNERS

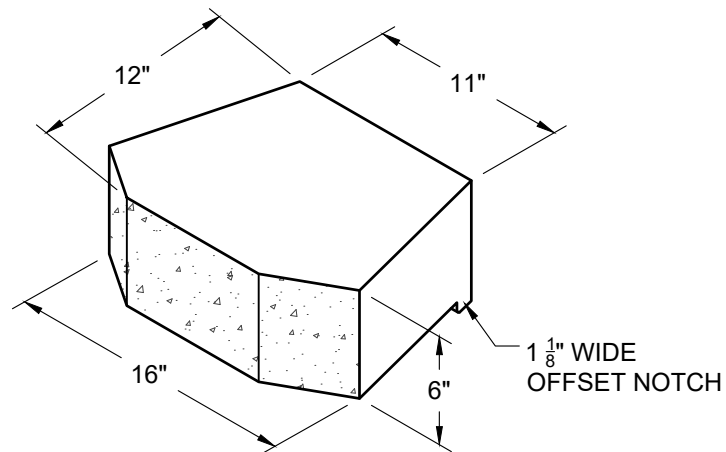
Scale:	Drawn by:
3/8" = 1'-0"	MAH
Date:	Drawing number:
1/2/2026	DM32



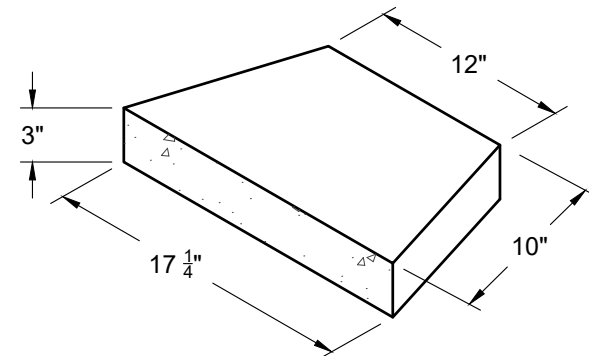
TOP VIEW



FRONT VIEW

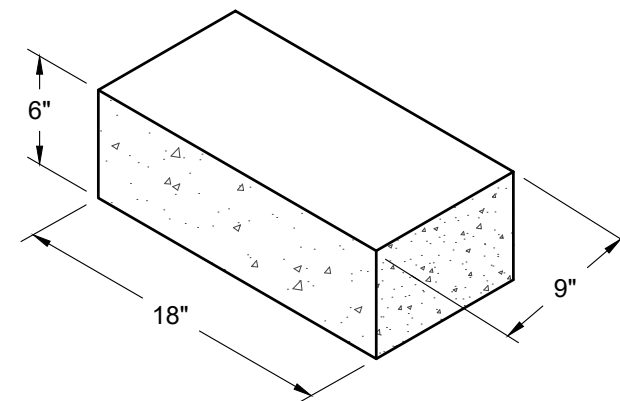


SIDE VIEW



CAP UNIT*

*CAP MAY VARY BY MANUFACTURER



CORNER UNIT



This drawing is for illustrative purposes only and should not be used for construction without the signature of a registered professional engineer.

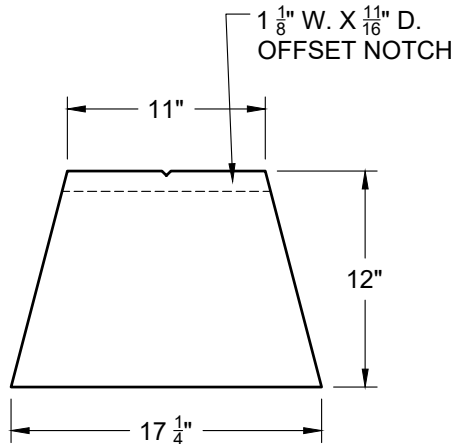
www.anchordiamond.com

© 2026 ANCHOR Engineering, LLC®
and © 2026 ANCHOR DIAMOND Group. All rights reserved

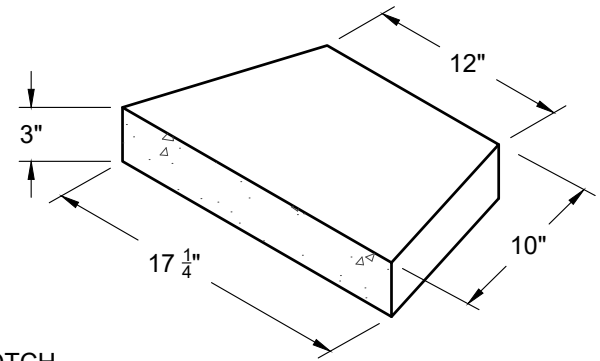
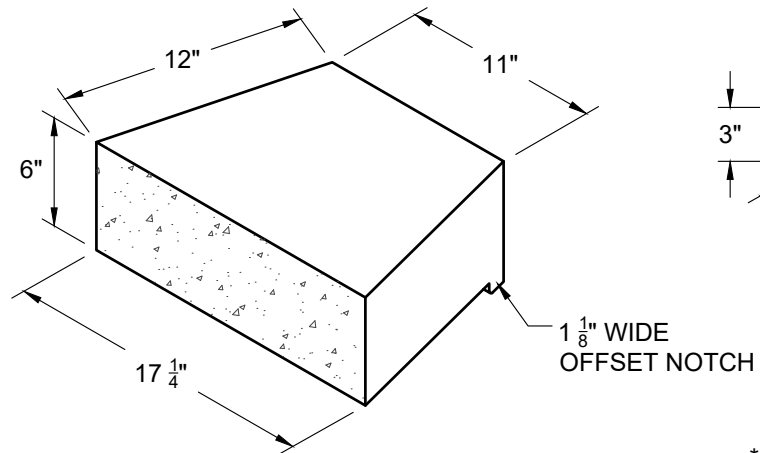
Diamond® Retaining Wall System

INDIVIDUAL BLOCK DETAILS - BEVELED

Scale:	N.T.S	Drawn by:	MAH
Date:	1/2/2026	Drawing number:	DM33

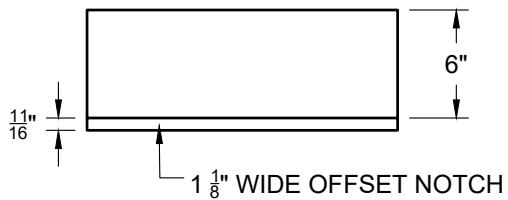


TOP VIEW

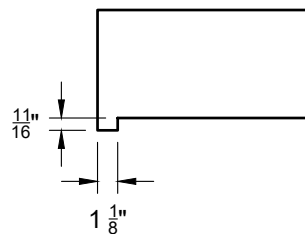


CAP UNIT*

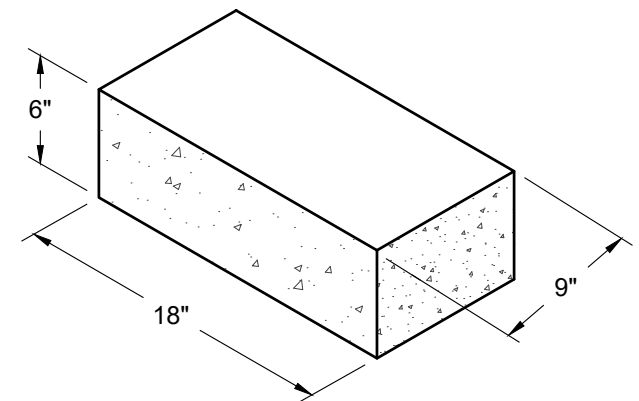
*CAP MAY VARY BY MANUFACTURER



FRONT VIEW



SIDE VIEW



CORNER UNIT



This drawing is for illustrative purposes only and should not be used for construction without the signature of a registered professional engineer.

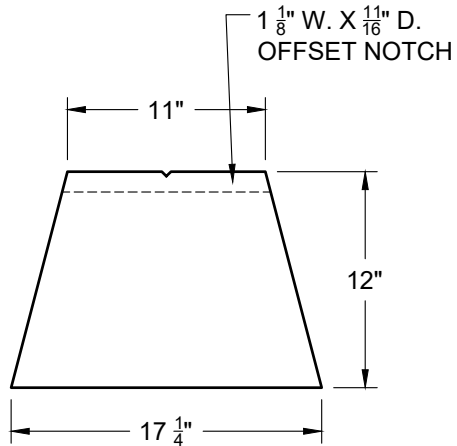
www.anchordiamond.com

© 2026 ANCHOR Engineering, LLC®
and © 2026 ANCHOR DIAMOND Group. All rights reserved

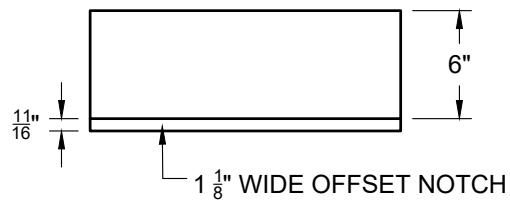
Diamond® Retaining Wall System

INDIVIDUAL BLOCK DETAILS - STRAIGHT FACE

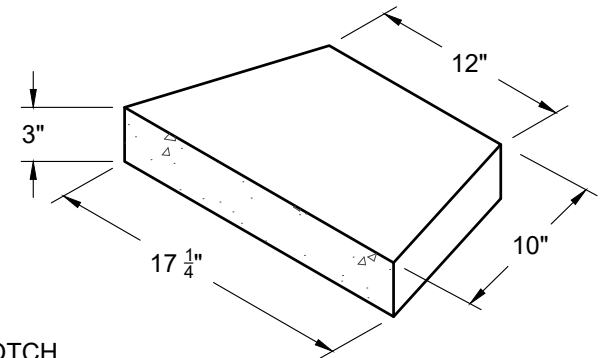
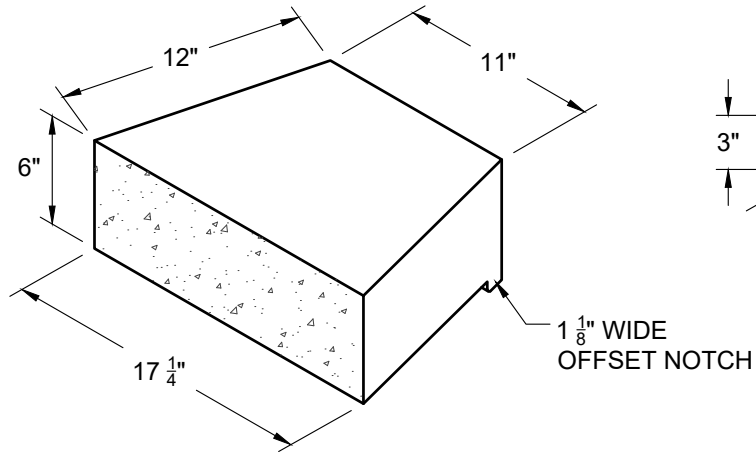
Scale: N.T.S	Drawn by: MAH
Date: 1/2/2026	Drawing number: DM34



TOP VIEW

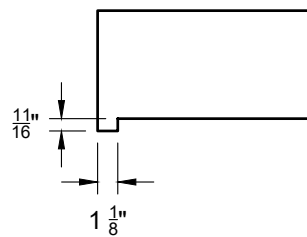


FRONT VIEW

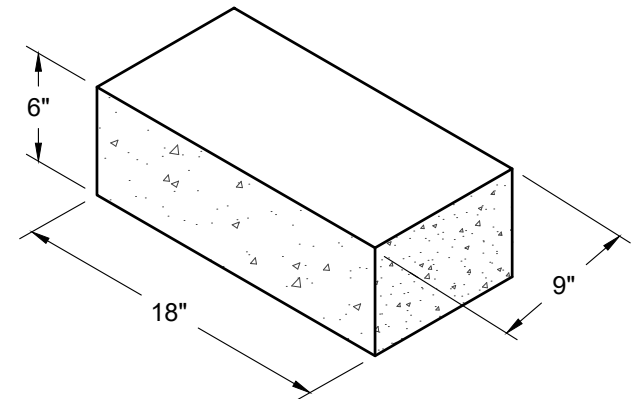


CAP UNIT*

*CAP MAY VARY BY MANUFACTURER



SIDE VIEW



CORNER UNIT



This drawing is for illustrative purposes only and should not be used for construction without the signature of a registered professional engineer.

www.anchordiamond.com

© 2026 ANCHOR Engineering, LLC®
and © 2026 ANCHOR DIAMOND Group. All rights reserved

Diamond® Retaining Wall System INDIVIDUAL BLOCK DETAILS - STONE CUT FACE

Scale:	N.T.S	Drawn by:	MAH
Date:	1/2/2026	Drawing number:	DM35