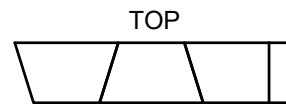
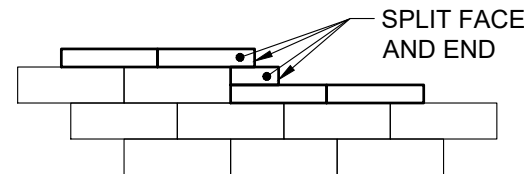
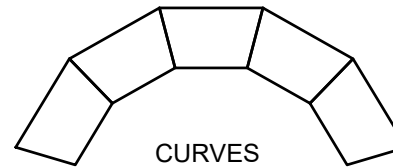
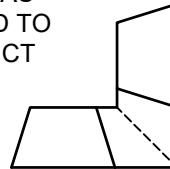


CAP UNIT



SAW CUT AS  
REQUIRED TO  
CONSTRUCT  
MITERED  
CORNER



WALL FACE

1. ALWAYS START CAPPING WALL FROM THE LOWEST ELEVATION.
2. LAYOUT CAPS PRIOR TO USING ADHESIVE.
3. CUT CAPS TO FIT. VARIOUS COMBINATIONS OF LONG AND SHORT CAP FACES WILL BE NECESSARY FOR RADII GREATER THAN THE MINIMUM.
4. ALTERNATE SHORT AND LONG CAP FACES EVERY OTHER CAP TO ACHIEVE A STRAIGHT ROW OF CAPS.
5. USE EXTERIOR-GRADE CONSTRUCTION ADHESIVE TO SECURE CAPS.



This drawing is for illustrative purposes only and should not be used for construction without the signature of a registered professional engineer.

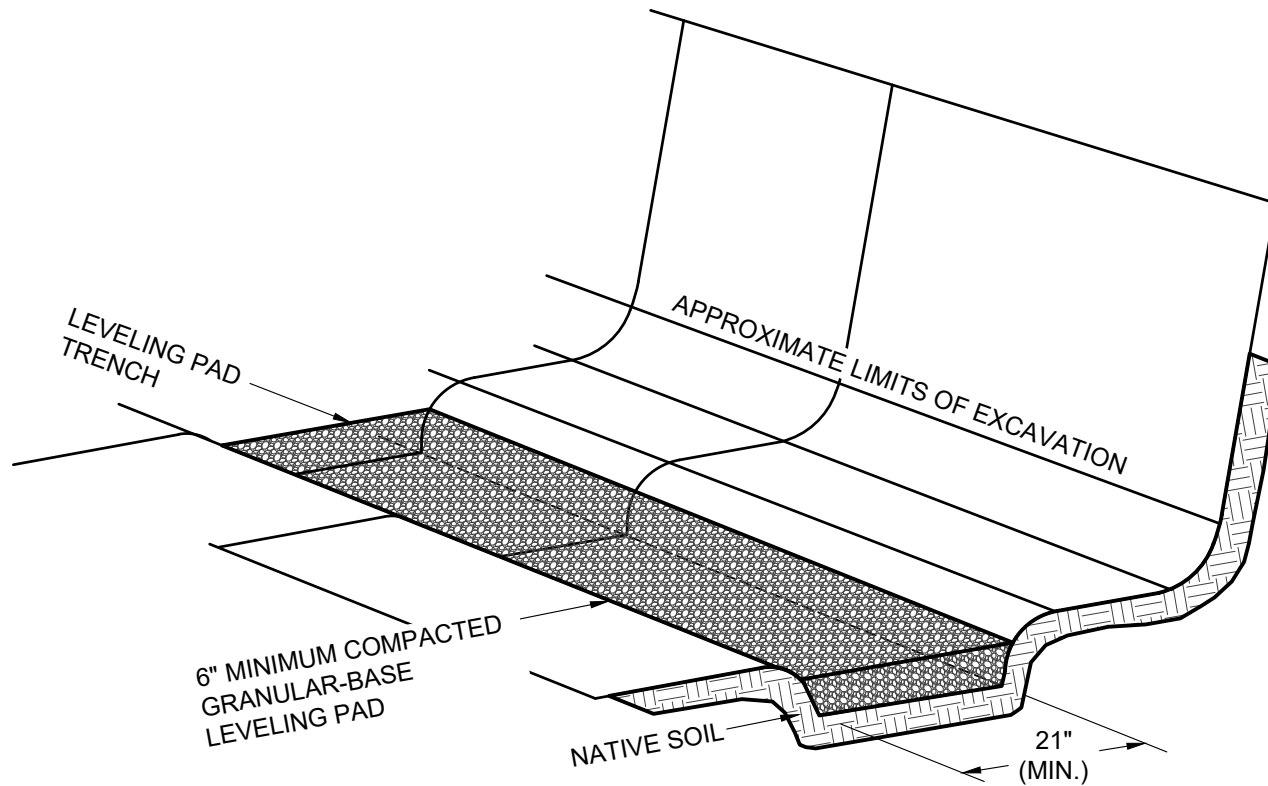
[www.anchordiamond.com](http://www.anchordiamond.com)

© 2025 ANCHOR Engineering, LLC®  
and © 2025 ANCHOR DIAMOND Group. All rights reserved

## Diamond® 9D Retaining Wall System

### TYPICAL CAPPING DETAILS

Scale:	NONE	Drawn by:	MAH
Date:	10/29/2025	Drawing number:	D9D-01



This drawing is for illustrative purposes only and should not be used for construction without the signature of a registered professional engineer.

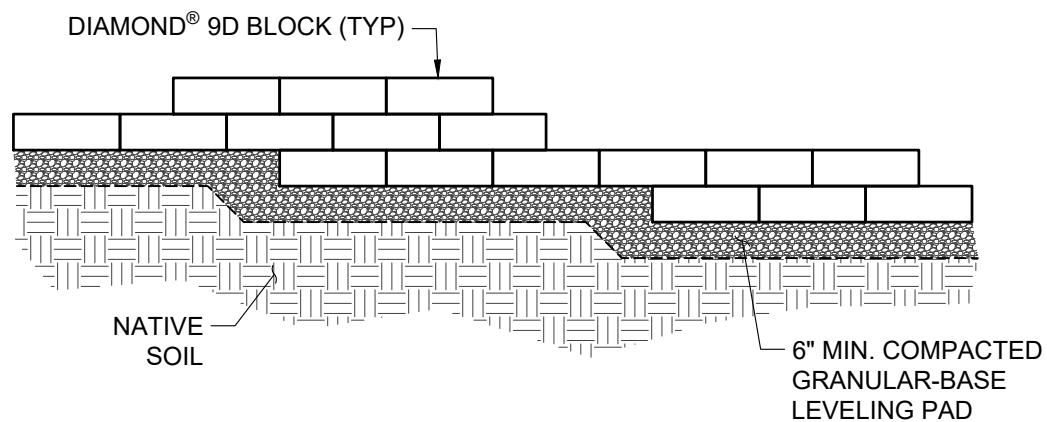
[www.anchordiamond.com](http://www.anchordiamond.com)

© 2025 ANCHOR Engineering, LLC®  
and © 2025 ANCHOR DIAMOND Group. All rights reserved

## Diamond® 9D Retaining Wall System

### TYPICAL BASE PREPARATION

Scale:	NONE	Drawn by:	MAH
Date:	10/29/2025	Drawing number:	D9D-02



This drawing is for illustrative purposes only and should not be used for construction without the signature of a registered professional engineer.

[www.anchordiamond.com](http://www.anchordiamond.com)

© 2025 ANCHOR Engineering, LLC®  
and © 2025 ANCHOR DIAMOND Group. All rights reserved

## Diamond® 9D Retaining Wall System

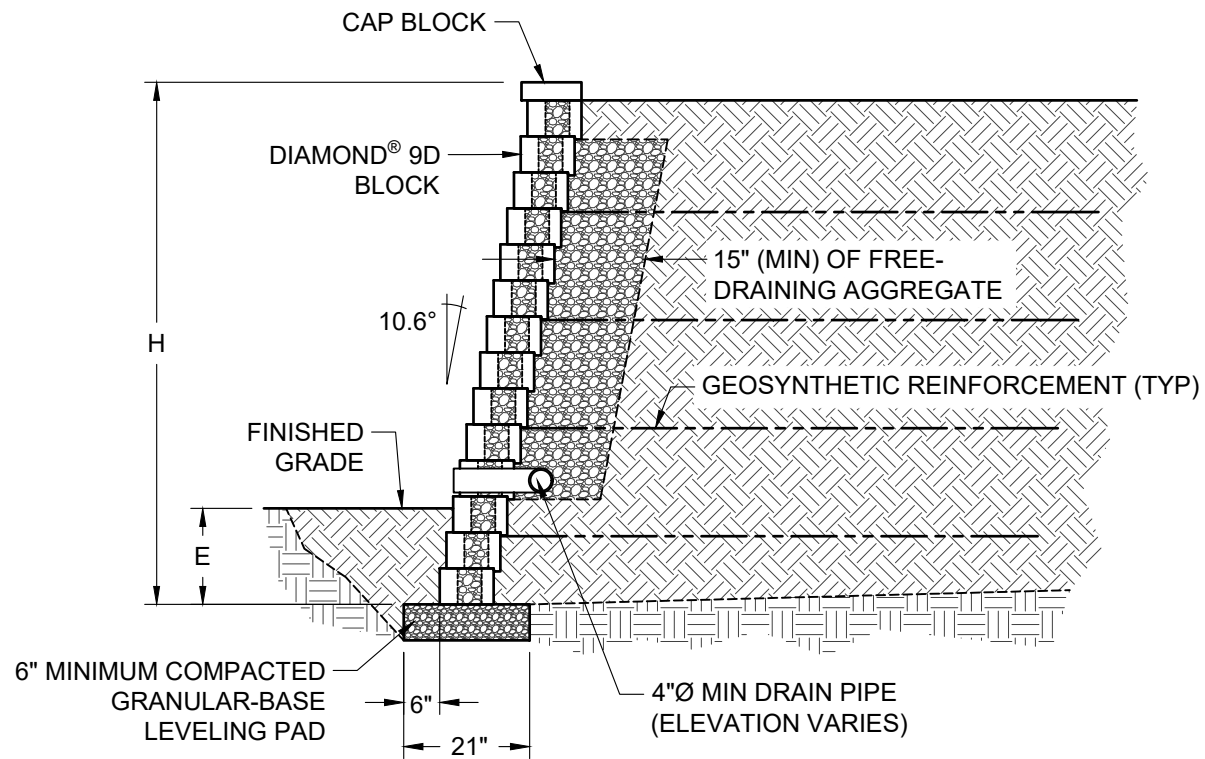
### TYPICAL BASE STEP-UP

Scale:  
3/8" = 1'-0"

Drawn by:  
MAH

Date:  
10/29/2025

Drawing number:  
D9D-03



This drawing is for illustrative purposes only and should not be used for construction without the signature of a registered professional engineer.

[www.anchordiamond.com](http://www.anchordiamond.com)

© 2025 ANCHOR Engineering, LLC®  
and © 2025 ANCHOR DIAMOND Group. All rights reserved

## Diamond® 9D Retaining Wall System

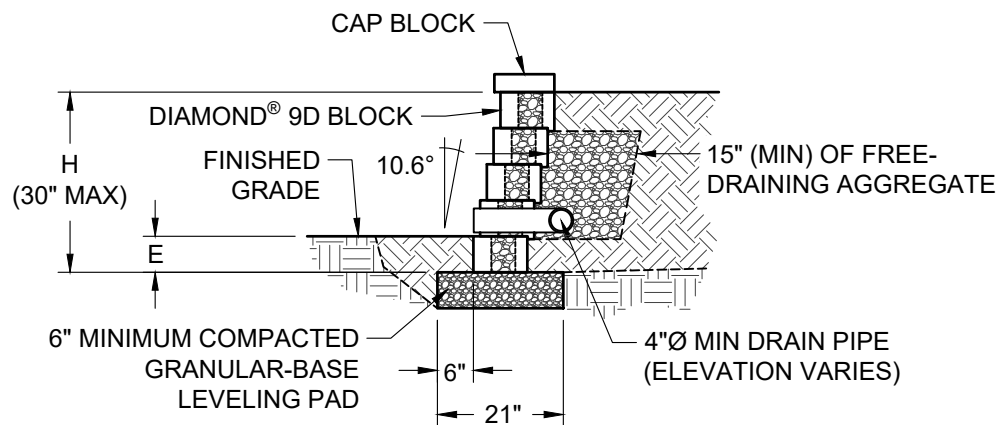
### TYPICAL REINFORCED CROSS SECTION

Scale:  
3/8" = 1'-0"

Drawn by:  
MAH

Date:  
10/29/2025

Drawing number:  
D9D-04



This drawing is for illustrative purposes only and should not be used for construction without the signature of a registered professional engineer.

www.anchordiamond.com

© 2025 ANCHOR Engineering, LLC®  
and © 2025 ANCHOR DIAMOND Group. All rights reserved

## Diamond® 9D Retaining Wall System

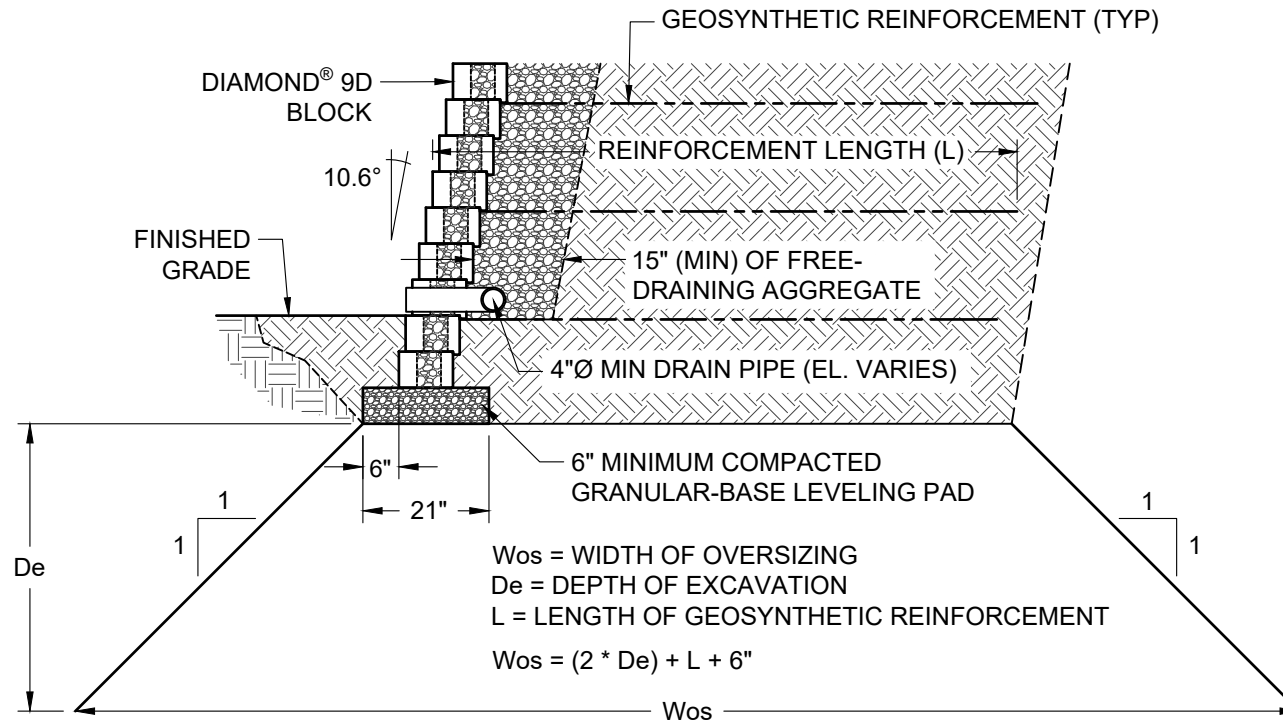
### TYPICAL GRAVITY CROSS SECTION

Scale:  
3/8" = 1'-0"

Drawn by:  
MAH

Date:  
10/29/2025

Drawing number:  
D9D-05



This drawing is for illustrative purposes only and should not be used for construction without the signature of a registered professional engineer.

www.anchordiamond.com

© 2025 ANCHOR Engineering, LLC®  
 and © 2025 ANCHOR DIAMOND Group. All rights reserved

## Diamond® 9D Retaining Wall System

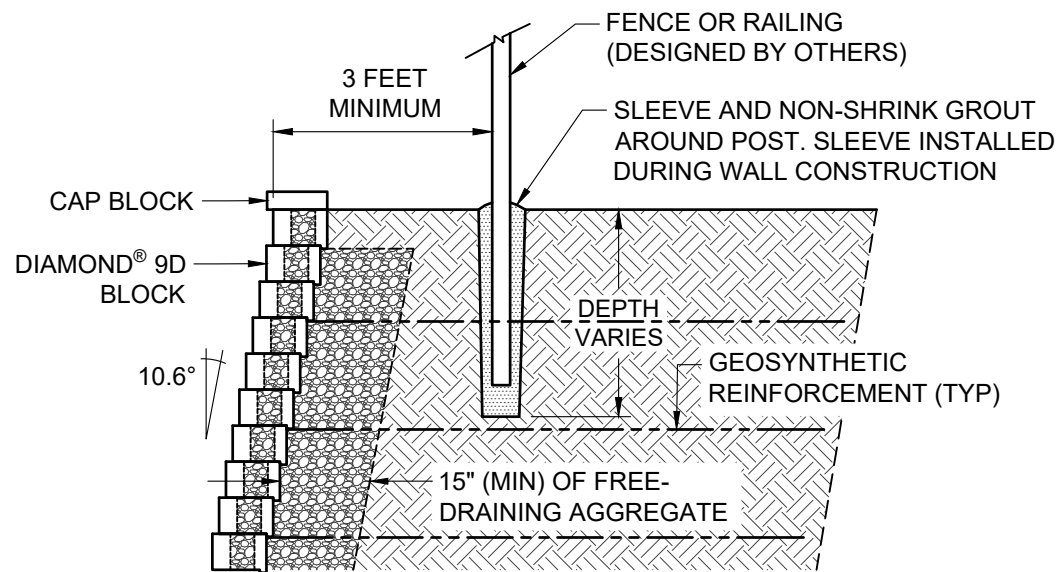
### TYPICAL EXCAVATION OVERSIZING

Scale:  
 3/8" = 1'-0"

Drawn by:  
 MAH

Date:  
 10/29/2025

Drawing number:  
 D9D-06



This drawing is for illustrative purposes only and should not be used for construction without the signature of a registered professional engineer.

[www.anchordiamond.com](http://www.anchordiamond.com)

© 2025 ANCHOR Engineering, LLC®  
and © 2025 ANCHOR DIAMOND Group. All rights reserved

## Diamond® 9D Retaining Wall System

### TYPICAL FENCE CROSS SECTION

Scale:  
3/8" = 1'-0"

Drawn by:  
MAH

Date:  
10/29/2025

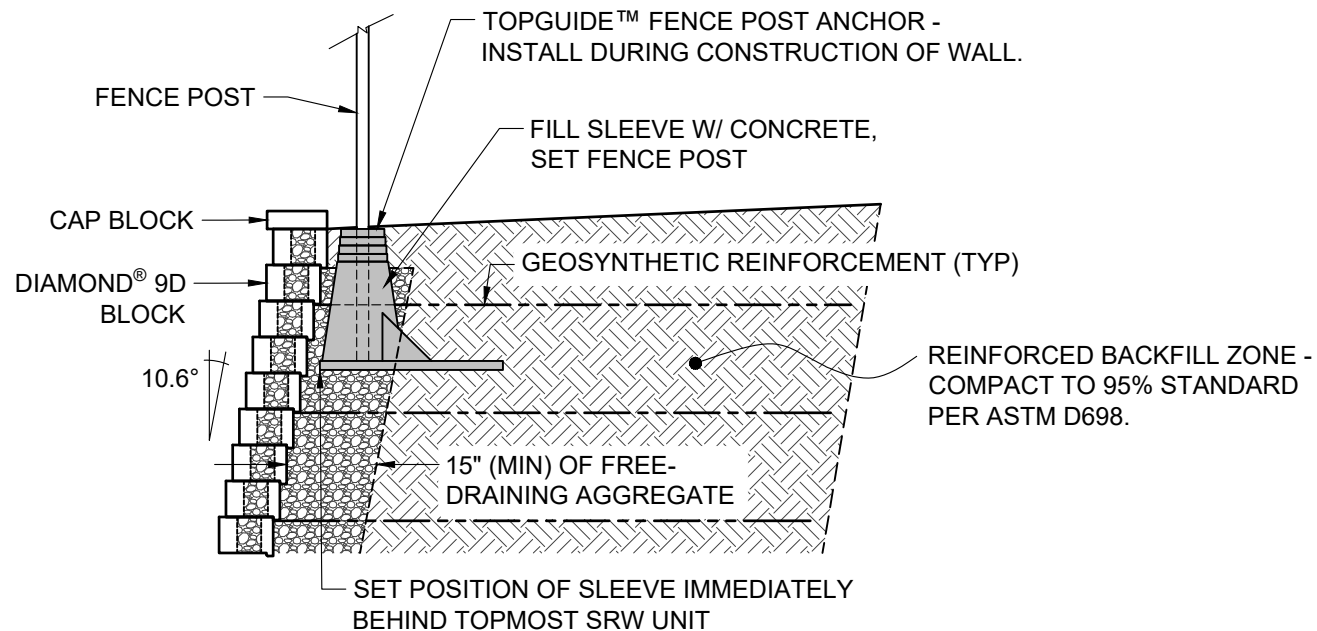
Drawing number:  
D9D-07

NOTES:

THE USE OF TOPGUIDE™ IS LIMITED TO HANDRAIL AND SAFETY RAIL APPLICATIONS PER IBC 1607.8.1

THE TOPGUIDE™ PRODUCT SHALL BE EVENLY SPACED. USE OF THE TOPGUIDE™ SYSTEM IS LIMITED TO THE FOLLOWING FENCING APPLICATIONS WITHOUT CONSIDERATION OF WIND LOAD:

- 8-FOOT HIGH AND UNDER CHAIN LINK FENCES
- 6-FOOT HIGH AND UNDER WOOD FENCES WITH GAPS BETWEEN BOARDS
- 6-FOOT HIGH AND UNDER PVC, STEEL, ALUMINUM, OR WROUGHT IRON FENCES



This drawing is for illustrative purposes only and should not be used for construction without the signature of a registered professional engineer.

[www.anchordiamond.com](http://www.anchordiamond.com)

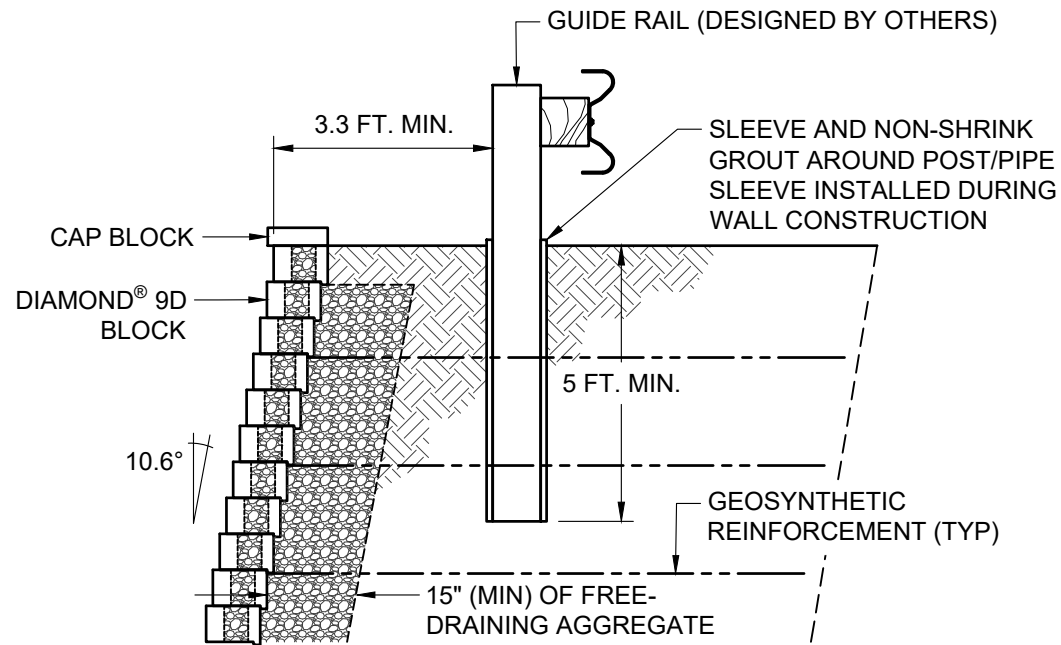
© 2025 ANCHOR Engineering, LLC®  
and © 2025 ANCHOR DIAMOND Group. All rights reserved

## Diamond® 9D Retaining Wall System

### ALTERNATE FENCE CROSS SECTION

Scale:	Drawn by:
3/8" = 1'-0"	MAH
Date:	Drawing number:
10/29/2025	D9D-08





This drawing is for illustrative purposes only and should not be used for construction without the signature of a registered professional engineer.

[www.anchordiamond.com](http://www.anchordiamond.com)

© 2025 ANCHOR Engineering, LLC®  
and © 2025 ANCHOR DIAMOND Group. All rights reserved

## Diamond® 9D Retaining Wall System

### TYPICAL GUIDE RAIL CROSS SECTION

Scale:	3/8" = 1'-0"	Drawn by:	MAH
Date:	10/29/2025	Drawing number:	D9D-09



© 2025 ANCHOR Engineering, LLC®  
and © 2025 ANCHOR DIAMOND Group. All rights reserved

Diamond® 9D Retaining Wall System

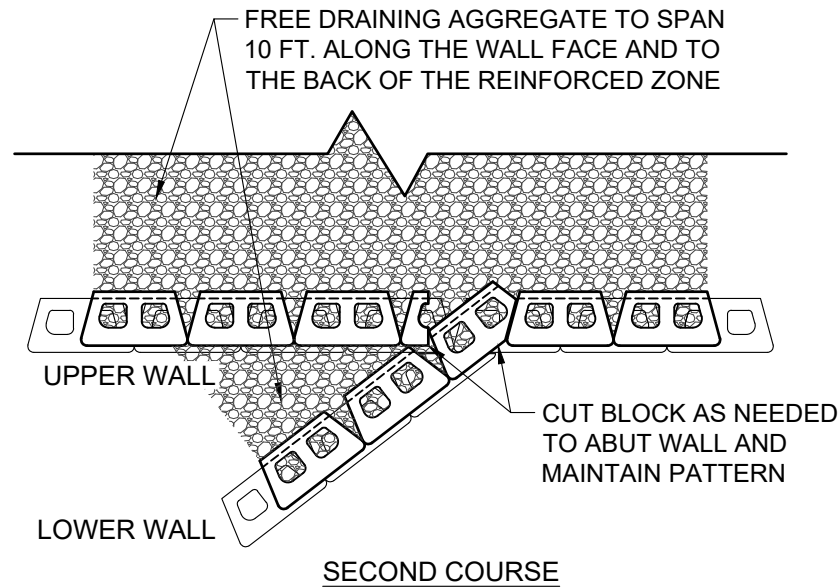
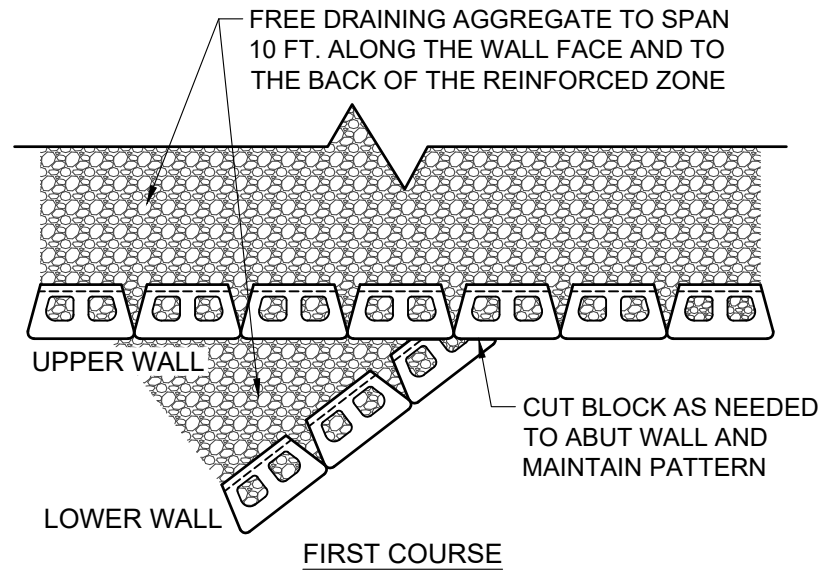
**TYPICAL TERRACED CROSS SECTION**

Scale:  
 $3/8" = 1'-0"$

Drawn by:	MAH
-----------	-----

Date: 10/29/2025

Drawing number:	D9D-10
-----------------	--------



This drawing is for illustrative purposes only and should not be used for construction without the signature of a registered professional engineer.

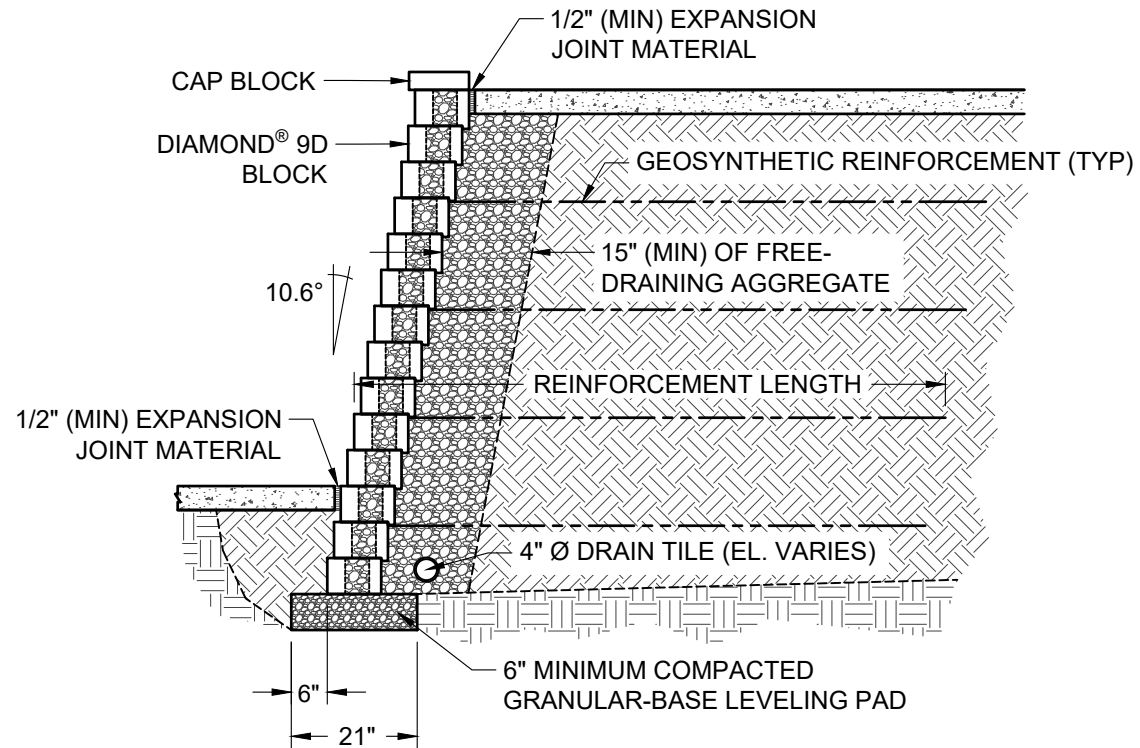
[www.anchordiamond.com](http://www.anchordiamond.com)

© 2025 ANCHOR Engineering, LLC®  
and © 2025 ANCHOR DIAMOND Group. All rights reserved

## Diamond® 9D Retaining Wall System

### TYPICAL TERRACE CONNECTION

Scale:	Drawn by:
3/8" = 1'-0"	MAH
Date:	Drawing number:
10/29/2025	D9D-11



This drawing is for illustrative purposes only and should not be used for construction without the signature of a registered professional engineer.

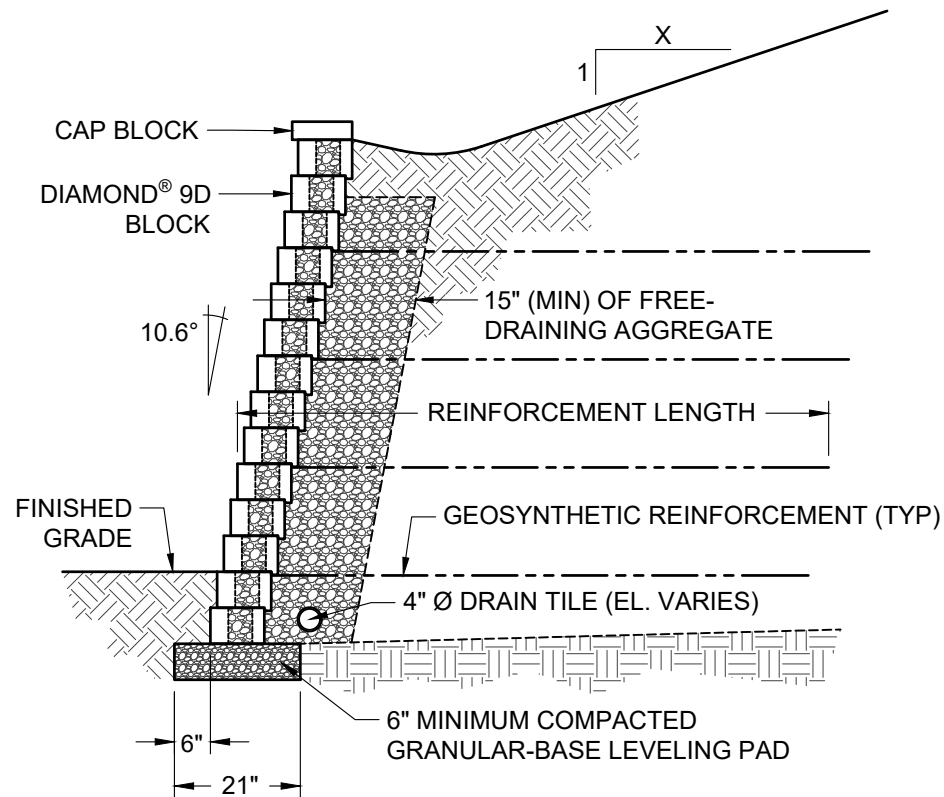
www.anchordiamond.com

© 2025 ANCHOR Engineering, LLC®  
and © 2025 ANCHOR DIAMOND Group. All rights reserved

## Diamond® 9D Retaining Wall System

### TYPICAL CROSS SECTION WITH SIDEWALK

Scale:	Drawn by:
3/8" = 1'-0"	MAH
Date:	Drawing number:
10/29/2025	D9D-12



This drawing is for illustrative purposes only and should not be used for construction without the signature of a registered professional engineer.

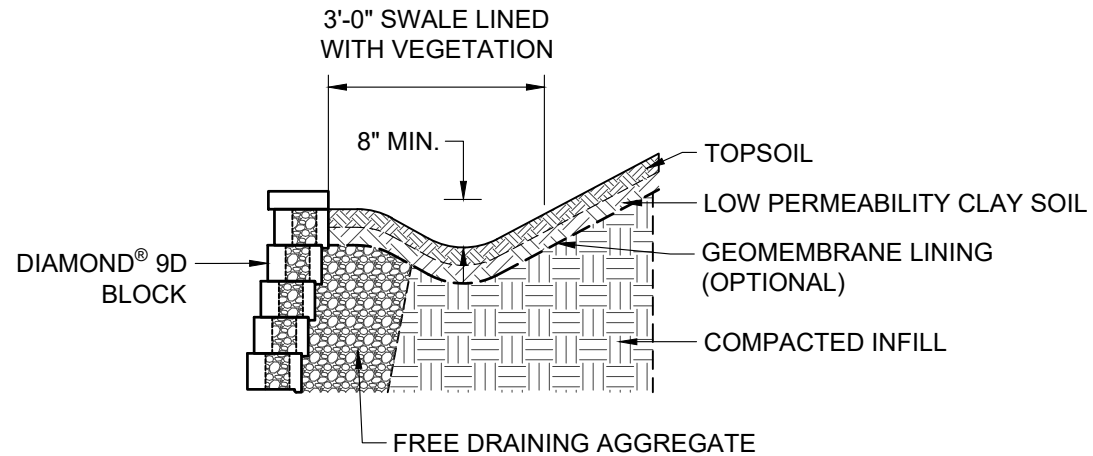
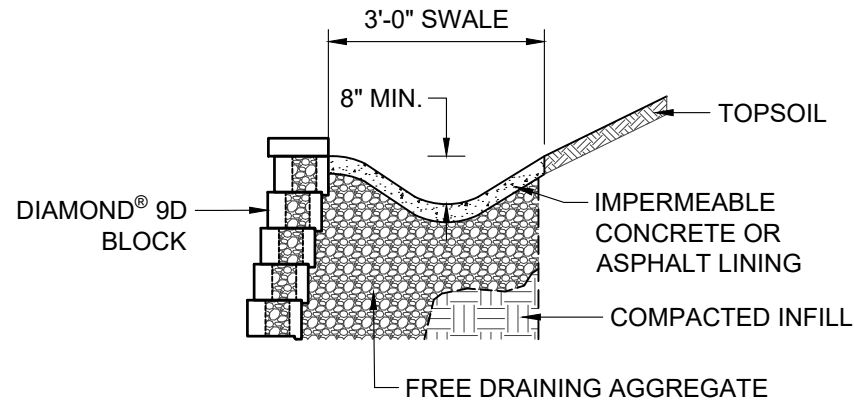
www.anchordiamond.com

© 2025 ANCHOR Engineering, LLC®  
and © 2025 ANCHOR DIAMOND Group. All rights reserved

## Diamond® 9D Retaining Wall System

### TYPICAL CROSS SECTION WITH CREST SLOPE

Scale: 3/8" = 1'-0"	Drawn by: MAH
Date: 10/29/2025	Drawing number: D9D-13



REFERENCE THE NCMA DESIGN MANUAL FOR ADDITIONAL DETAILS



This drawing is for illustrative purposes only and should not be used for construction without the signature of a registered professional engineer.

[www.anchordiamond.com](http://www.anchordiamond.com)

© 2025 ANCHOR Engineering, LLC®  
and © 2025 ANCHOR DIAMOND Group. All rights reserved

## Diamond® 9D Retaining Wall System

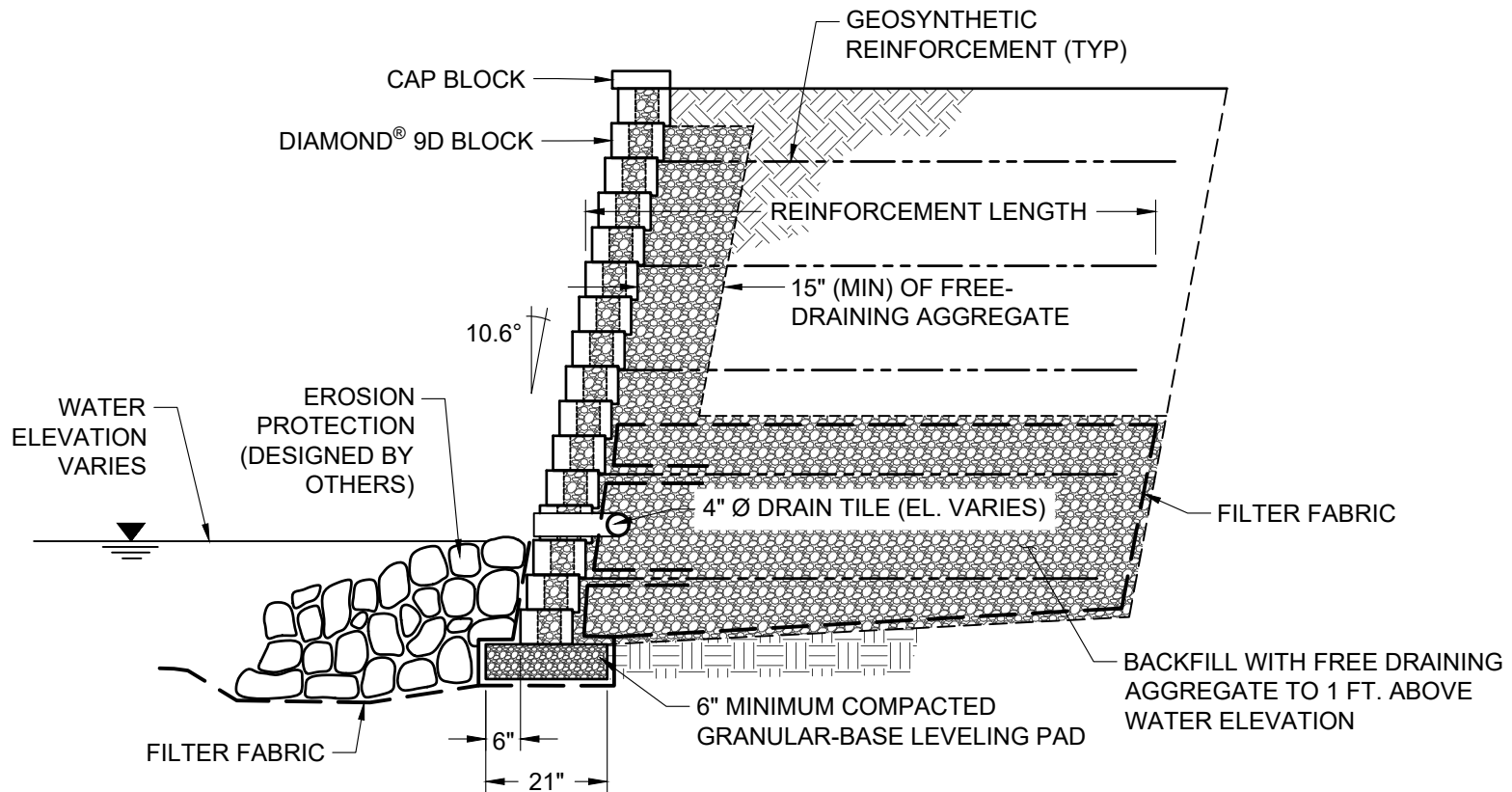
### TYPICAL DRAINAGE SWALE CROSS SECTIONS

Scale:  
3/8" = 1'-0"

Drawn by:  
MAH

Date:  
10/29/2025

Drawing number:  
D9D-14



**ANCHOR**  
DIAMOND

This drawing is for illustrative purposes only and should not be used for construction without the signature of a registered professional engineer.

www.anchordiamond.com

© 2025 ANCHOR Engineering, LLC®  
and © 2025 ANCHOR DIAMOND Group. All rights reserved

## Diamond® 9D Retaining Wall System

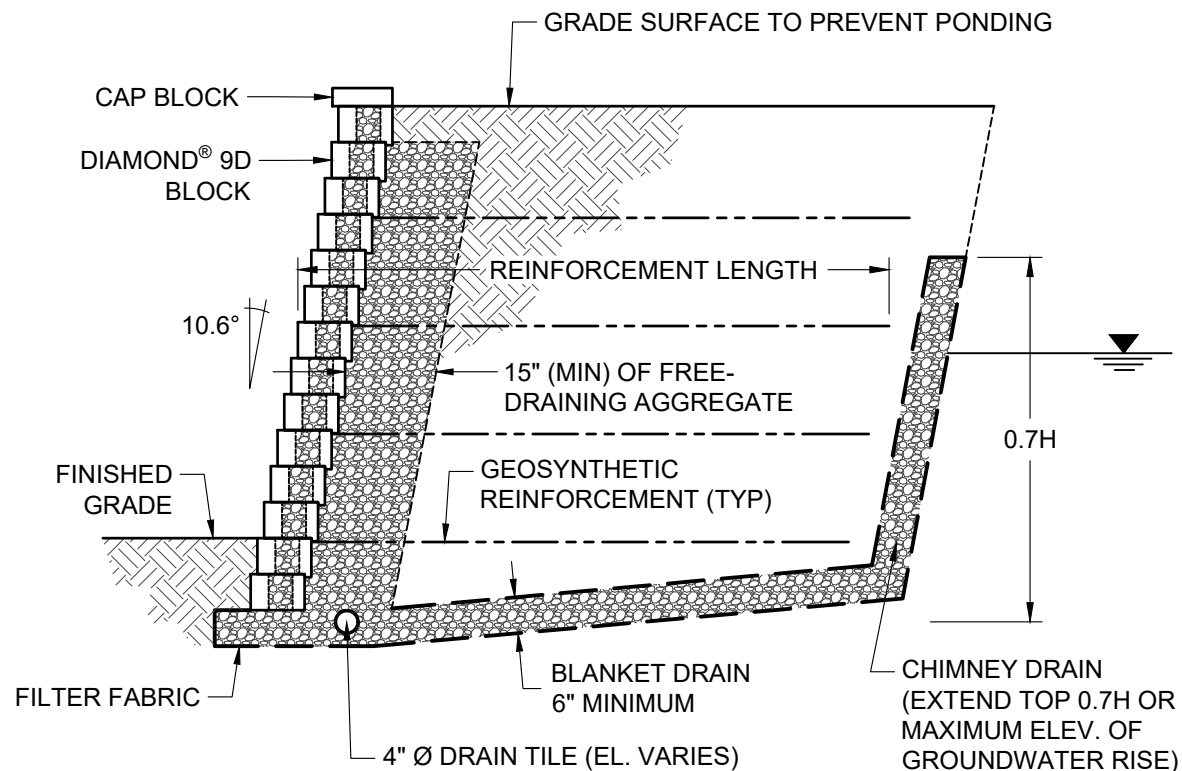
### TYPICAL SHORELINE CROSS SECTION

Scale:  
3/8" = 1'-0"

Drawn by:  
MAH

Date:  
10/29/2025

Drawing number:  
D9D-15



**ANCHOR**  
DIAMOND

This drawing is for illustrative purposes only and should not be used for construction without the signature of a registered professional engineer.

www.anchordiamond.com

© 2025 ANCHOR Engineering, LLC®  
and © 2025 ANCHOR DIAMOND Group. All rights reserved

## Diamond® 9D Retaining Wall System

### TYPICAL GROUNDWATER INTRUSION CROSS SECTION

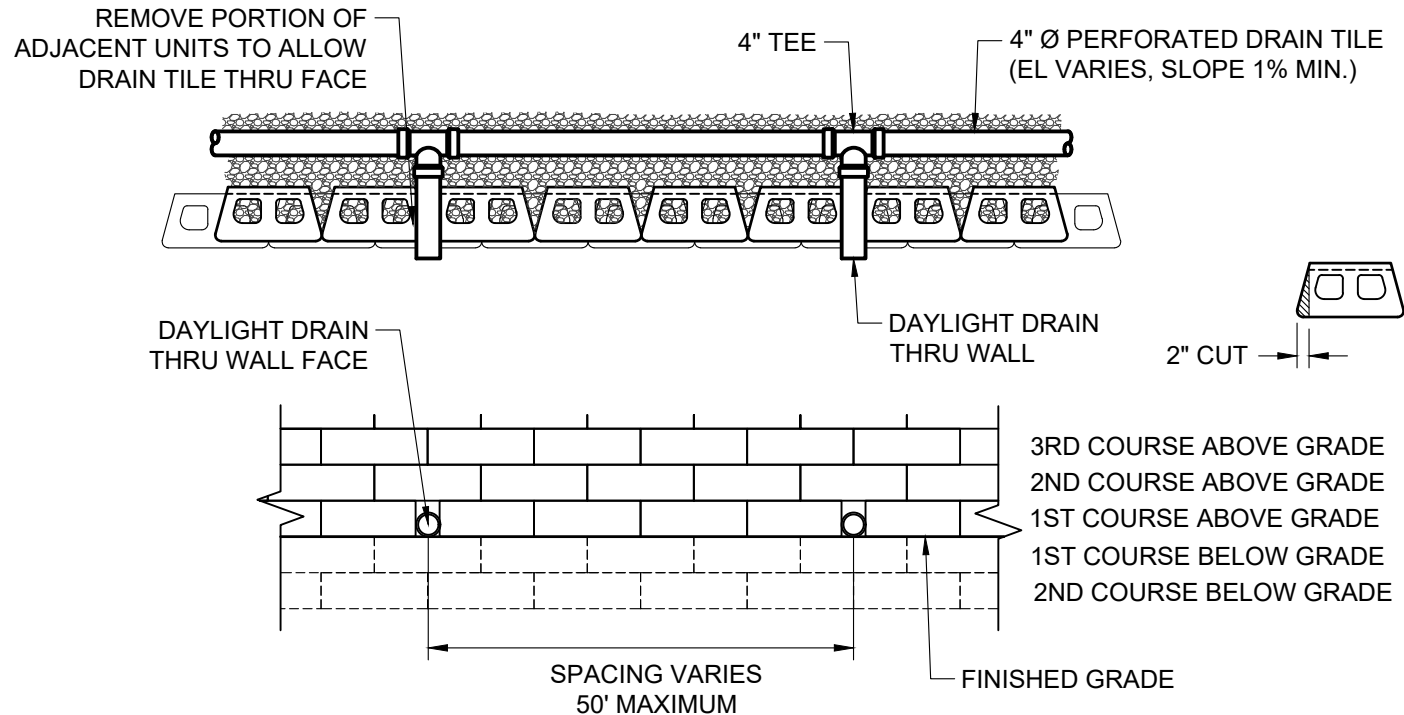
Scale:  
3/8" = 1'-0"

Date:  
10/29/2025

Drawn by:  
MAH

Drawing number:  
D9D-16





**ANCHOR**  
DIAMOND

This drawing is for illustrative purposes only and should not be used for construction without the signature of a registered professional engineer.

www.anchordiamond.com

© 2025 ANCHOR Engineering, LLC®  
and © 2025 ANCHOR DIAMOND Group. All rights reserved

## Diamond® 9D Retaining Wall System

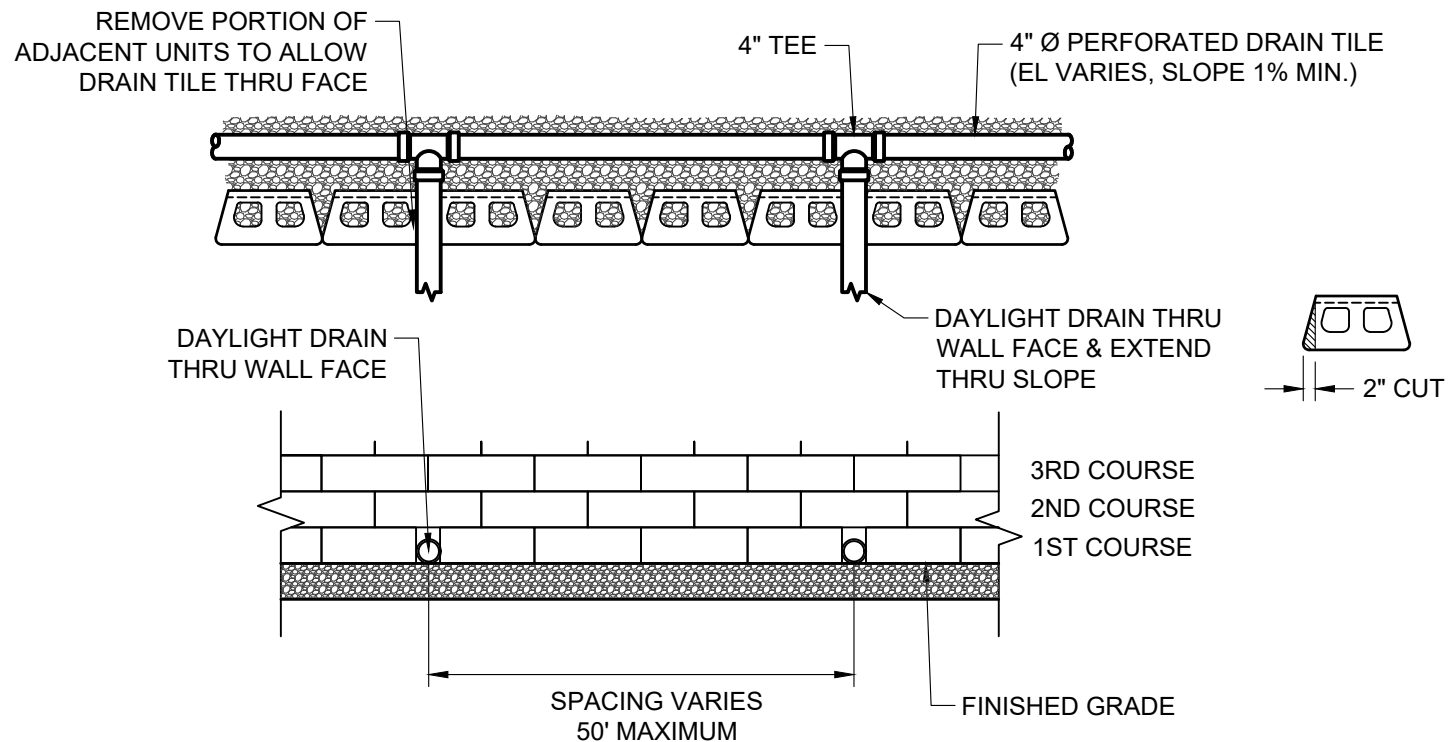
### TYPICAL DRAIN PIPE THROUGH WALL FACE

Scale:  
3/8" = 1'-0"

Drawn by:  
MAH

Date:  
10/29/2025

Drawing number:  
D9D-17



**ANCHOR**  
DIAMOND

This drawing is for illustrative purposes only and should not be used for construction without the signature of a registered professional engineer.

www.anchordiamond.com

© 2025 ANCHOR Engineering, LLC®  
and © 2025 ANCHOR DIAMOND Group. All rights reserved

## Diamond® 9D Retaining Wall System

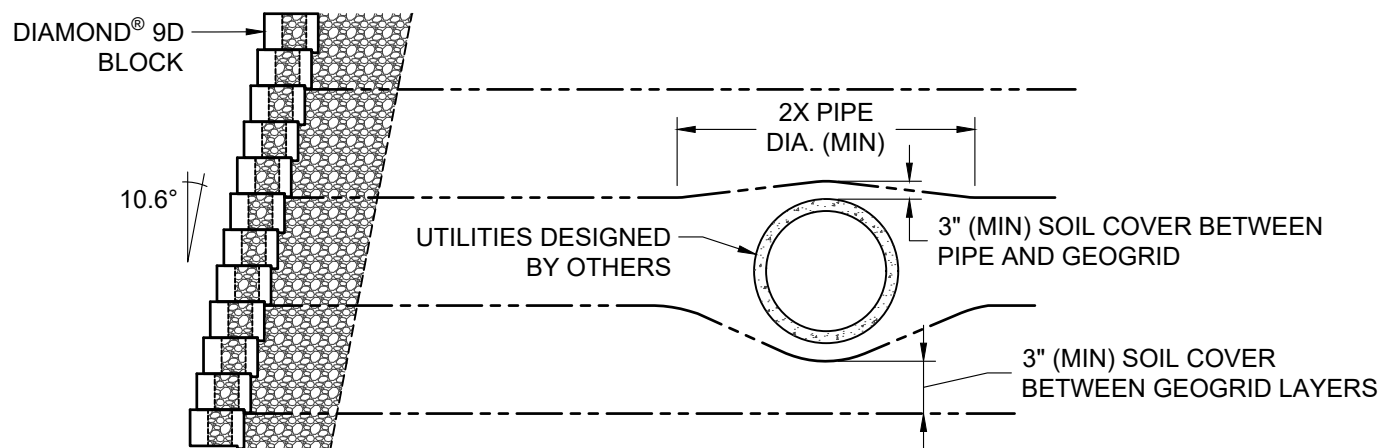
### TYPICAL DRAIN PIPE THROUGH TOE SLOPE

Scale:  
3/8" = 1'-0"

Drawn by:  
MAH

Date:  
10/29/2025

Drawing number:  
D9D-18



This drawing is for illustrative purposes only and should not be used for construction without the signature of a registered professional engineer.

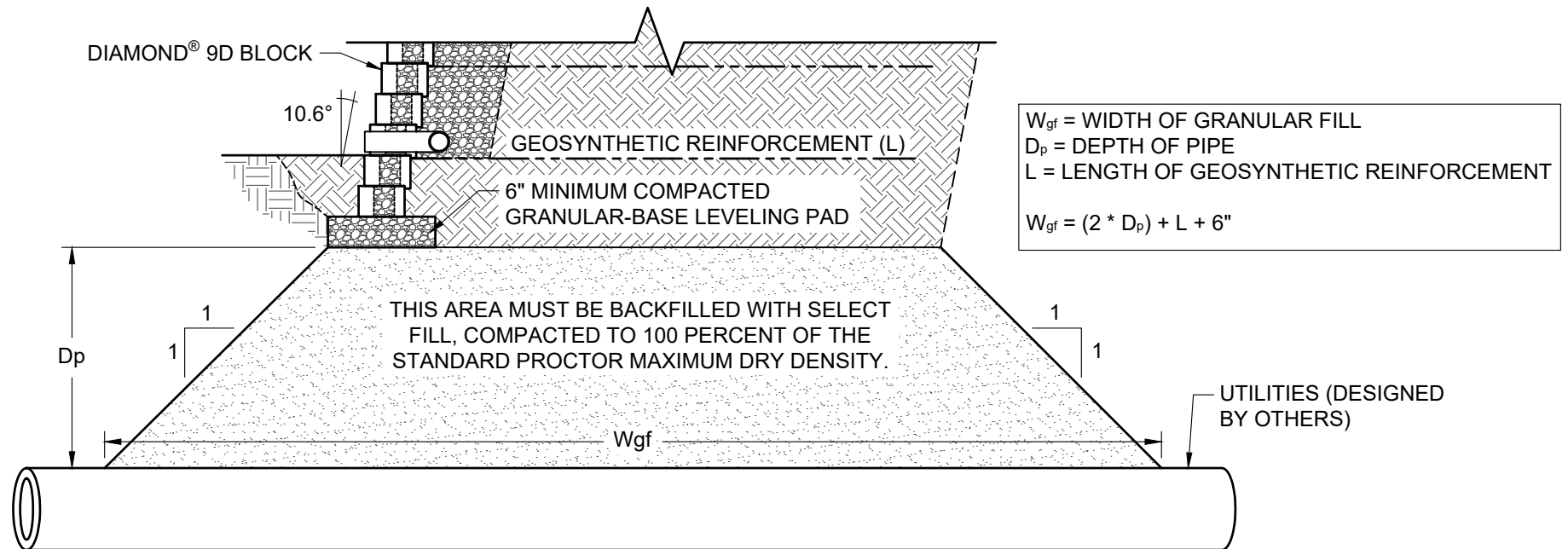
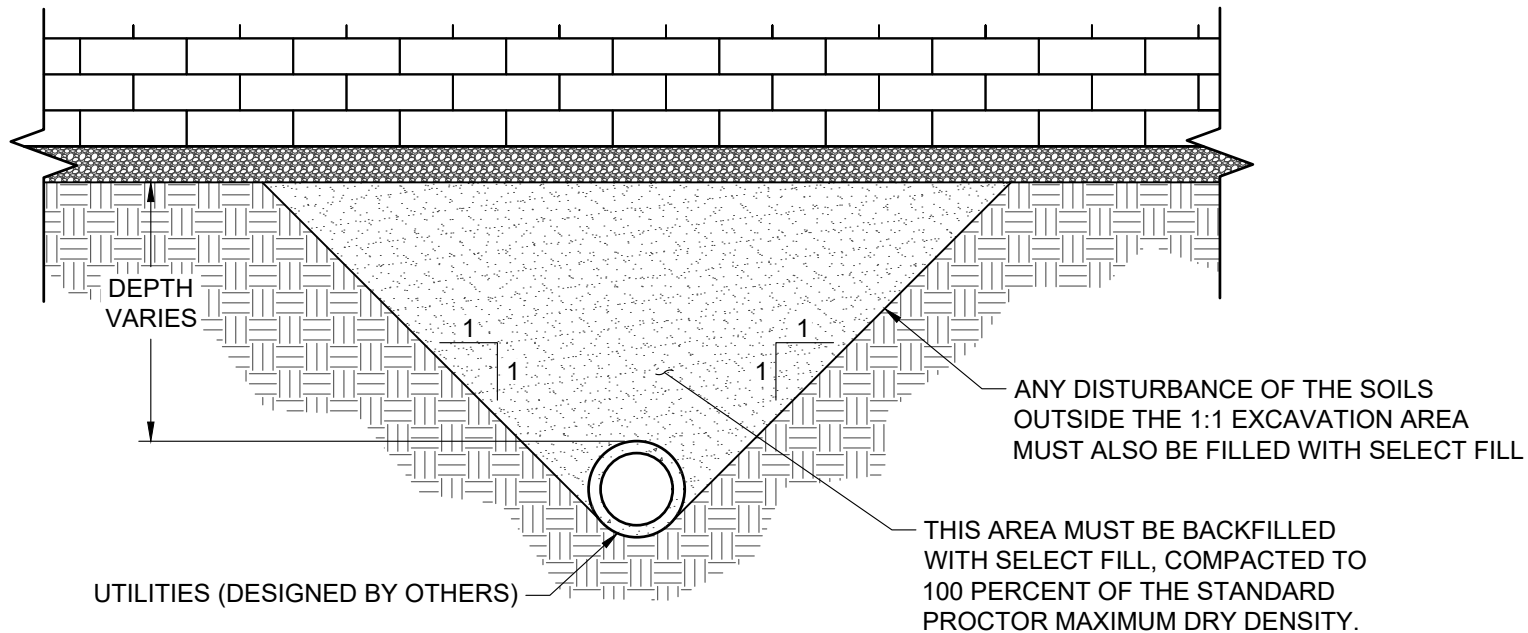
[www.anchordiamond.com](http://www.anchordiamond.com)

© 2025 ANCHOR Engineering, LLC®  
and © 2025 ANCHOR DIAMOND Group. All rights reserved

## Diamond® 9D Retaining Wall System

### TYPICAL CROSS SECTION WITH PARALLEL UTILITIES

Scale:	Drawn by:
3/8" = 1'-0"	MAH
Date:	Drawing number:
10/29/2025	D9D-19



**ANCHOR**  
DIAMOND

This drawing is for illustrative purposes only and should not be used for construction without the signature of a registered professional engineer.

[www.anchordiamond.com](http://www.anchordiamond.com)

© 2025 ANCHOR Engineering, LLC®  
and © 2025 ANCHOR DIAMOND Group. All rights reserved

## Diamond® 9D Retaining Wall System

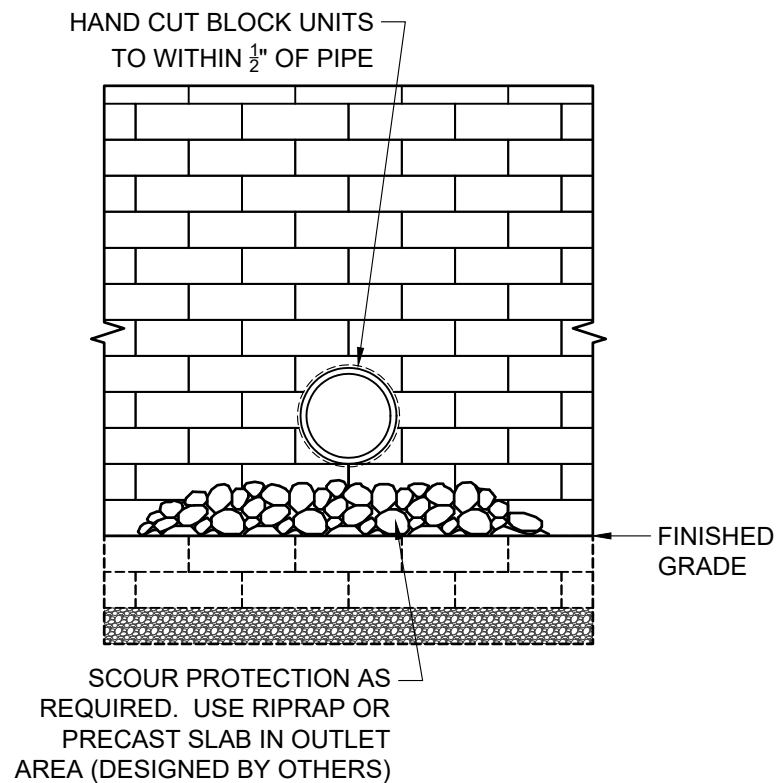
### TYPICAL DETAILS FOR UTILITIES BELOW WALL

Scale:  
3/8" = 1'-0"

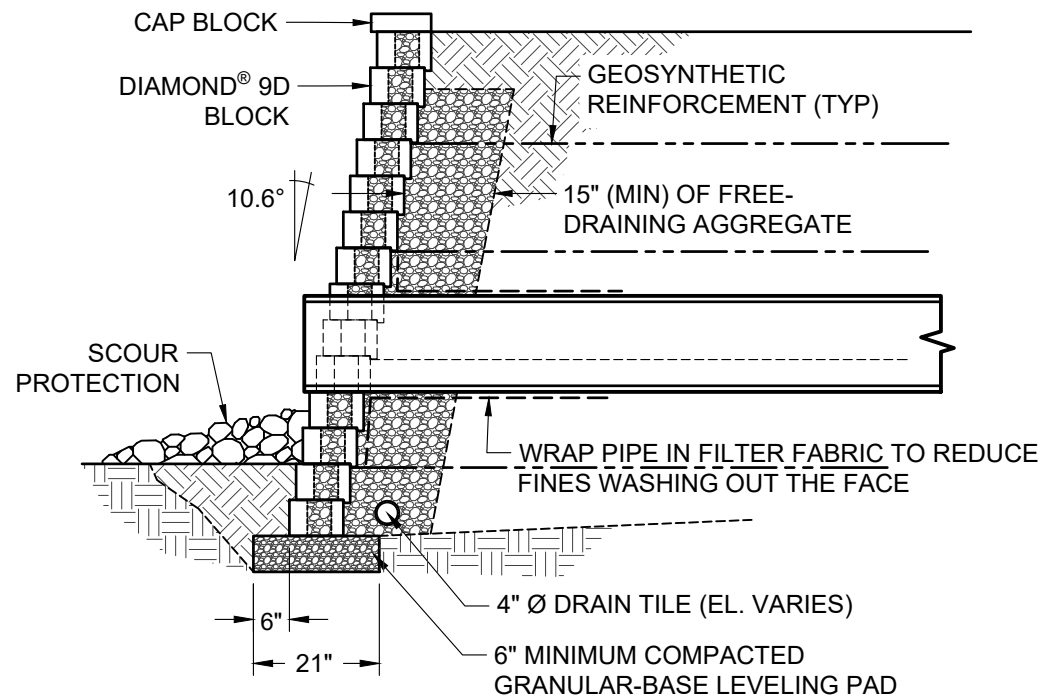
Drawn by:  
MAH

Date:  
10/29/2025

Drawing number:  
D9D-20



FACE VIEW



SECTION VIEW



This drawing is for illustrative purposes only and should not be used for construction without the signature of a registered professional engineer.

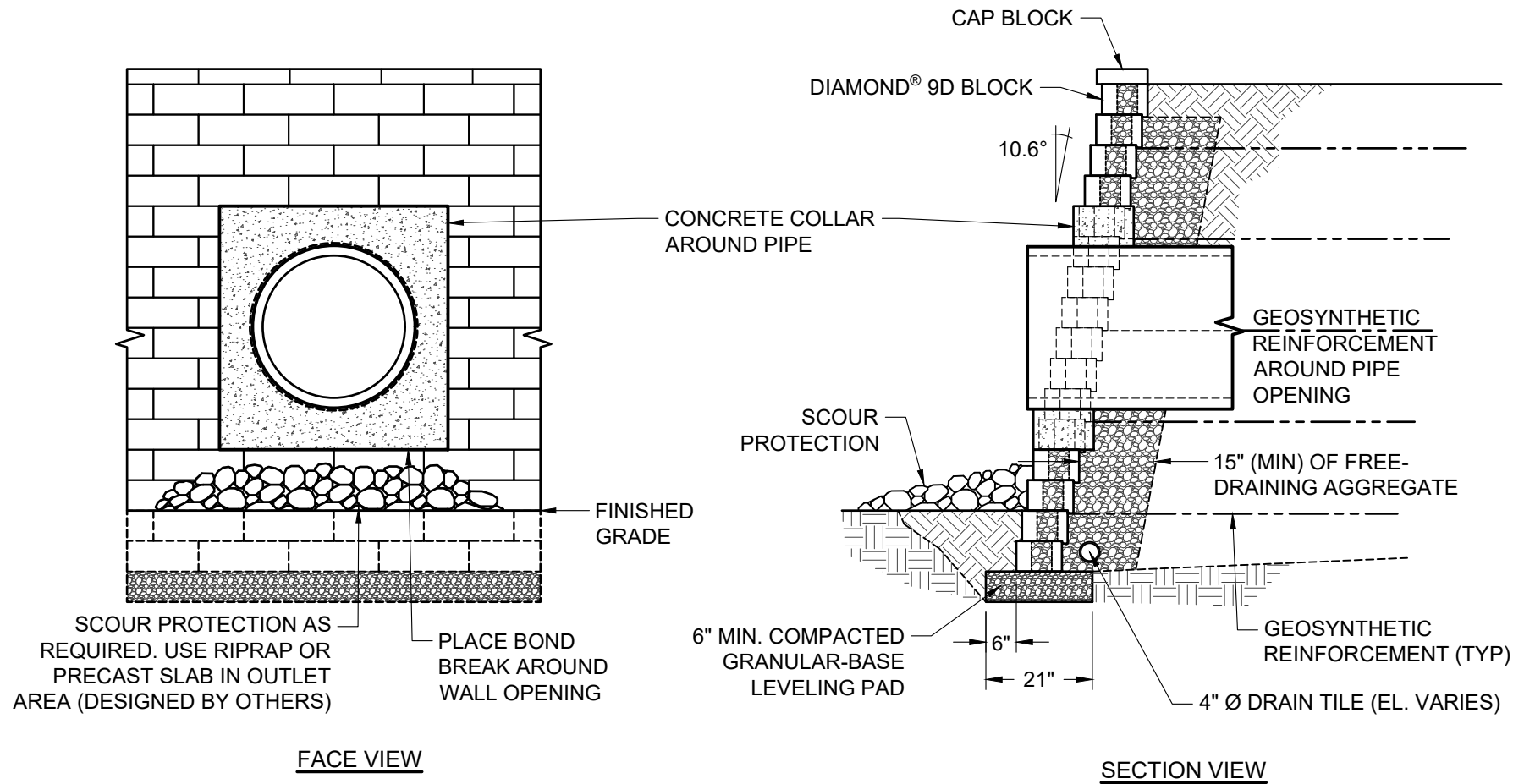
www.anchordiamond.com

© 2025 ANCHOR Engineering, LLC®  
and © 2025 ANCHOR DIAMOND Group. All rights reserved

## Diamond® 9D Retaining Wall System

### TYPICAL DETAILS FOR SMALL UTILITIES THROUGH WALL

Scale:	3/8" = 1'-0"	Drawn by:	MAH
Date:	10/29/2025	Drawing number:	D9D-21



This drawing is for illustrative purposes only and should not be used for construction without the signature of a registered professional engineer.

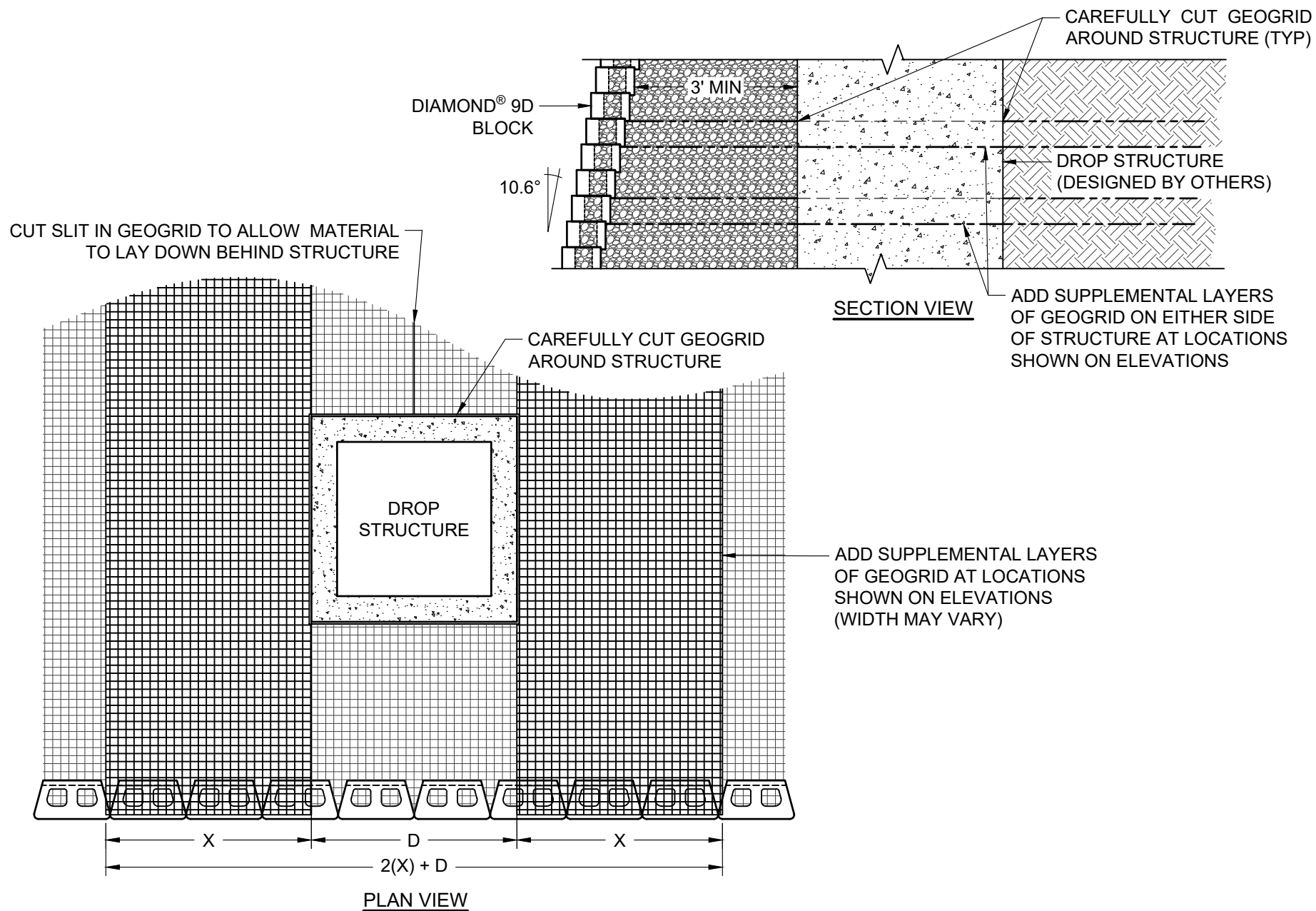
www.anchordiamond.com

© 2025 ANCHOR Engineering, LLC®  
and © 2025 ANCHOR DIAMOND Group. All rights reserved

## Diamond® 9D Retaining Wall System

### TYPICAL DETAILS FOR LARGE UTILITIES THROUGH WALL

Scale:	3/8" = 1'-0"	Drawn by:	MAH
Date:	10/29/2025	Drawing number:	D9D-22



**ANCHOR**  
DIAMOND

This drawing is for illustrative purposes only and should not be used for construction without the signature of a registered professional engineer.

www.anchordiamond.com

© 2025 ANCHOR Engineering, LLC®  
and © 2025 ANCHOR DIAMOND Group. All rights reserved

## Diamond® 9D Retaining Wall System

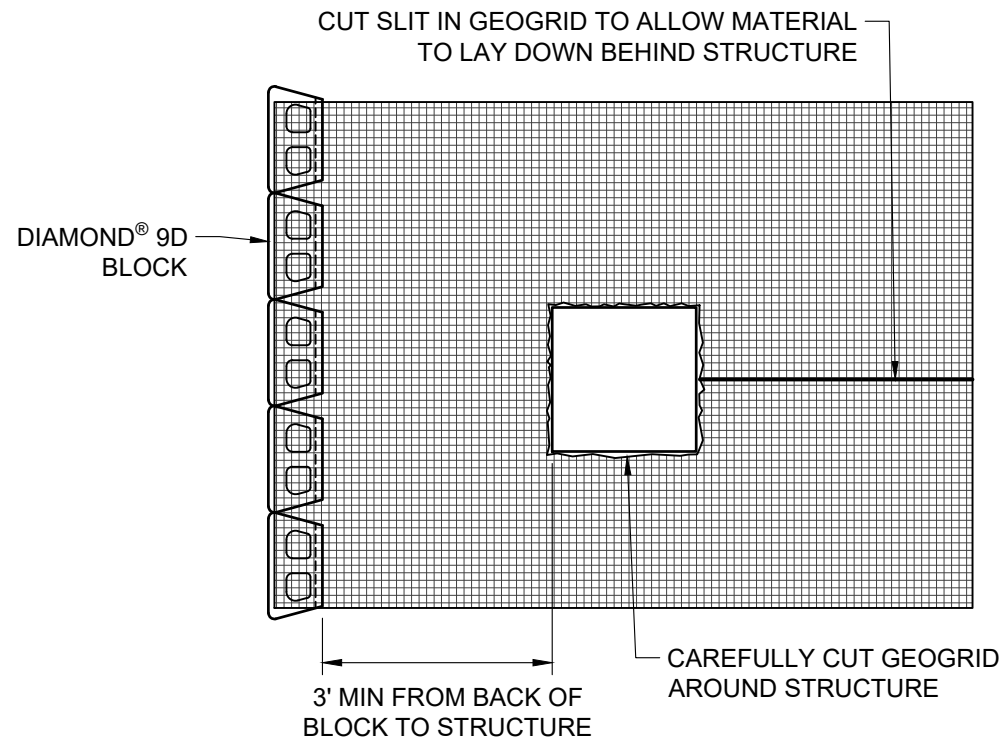
### TYPICAL DETAILS DROP STRUCTURE BEHIND WALL

Scale:  
3/8" = 1'-0"

Drawn by:  
MAH

Date:  
10/29/2025

Drawing number:  
D9D-23



This drawing is for illustrative purposes only and should not be used for construction without the signature of a registered professional engineer.

[www.anchordiamond.com](http://www.anchordiamond.com)

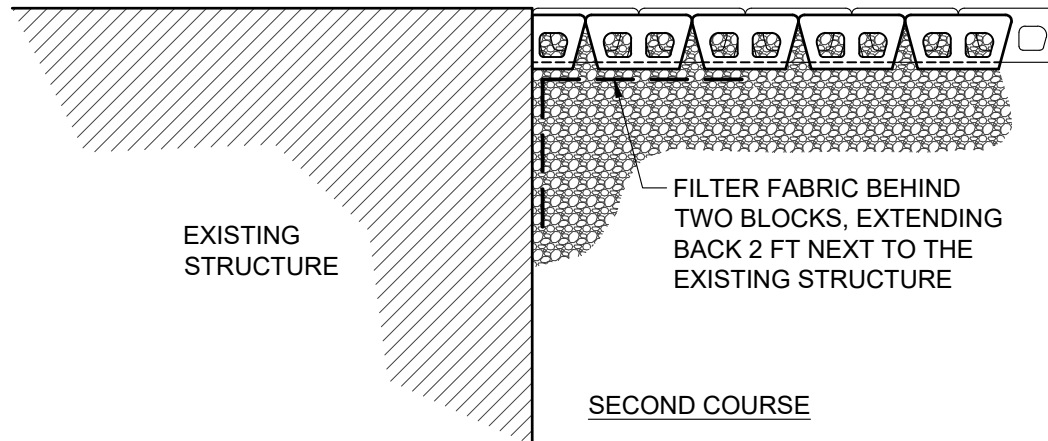
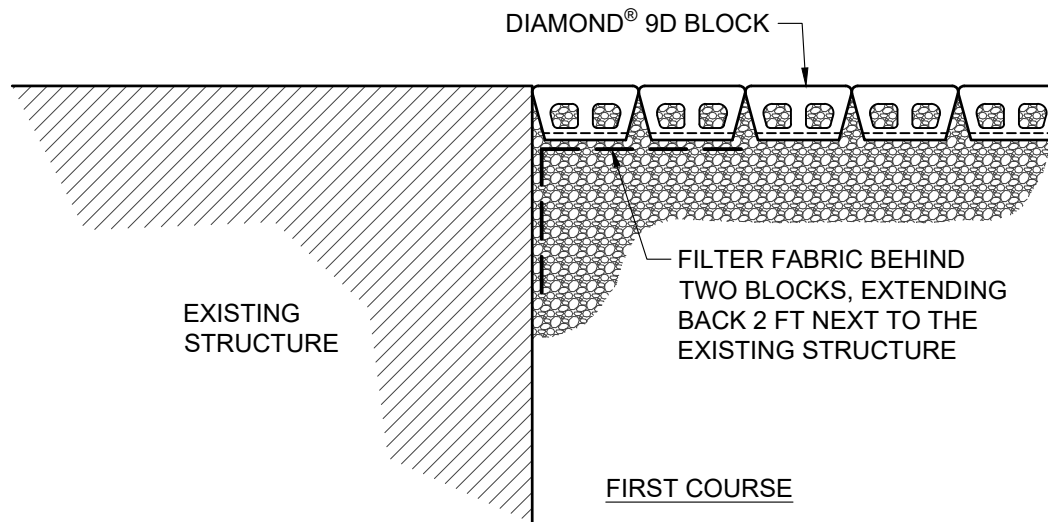
© 2025 ANCHOR Engineering, LLC®  
and © 2025 ANCHOR DIAMOND Group. All rights reserved

## Diamond® 9D Retaining Wall System

### TYPICAL DETAIL ALTERNATE DROP STRUCTURE BEHIND WALL

Scale:	Drawn by:
3/8" = 1'-0"	MAH
Date:	Drawing number:
10/29/2025	D9D-24





This drawing is for illustrative purposes only and should not be used for construction without the signature of a registered professional engineer.

[www.anchordiamond.com](http://www.anchordiamond.com)

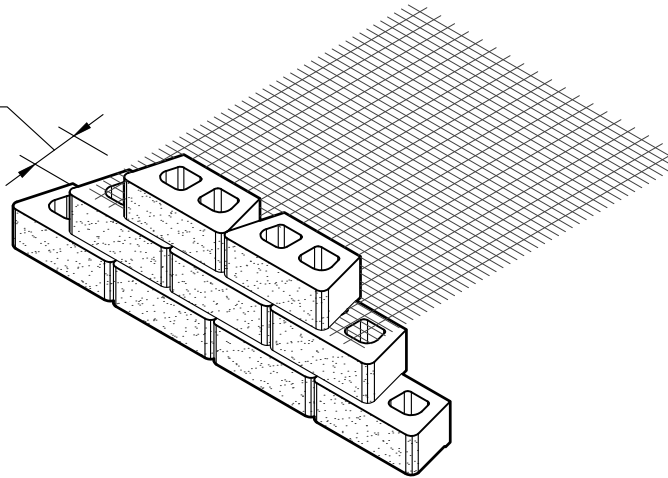
© 2025 ANCHOR Engineering, LLC®  
and © 2025 ANCHOR DIAMOND Group. All rights reserved

## Diamond® 9D Retaining Wall System

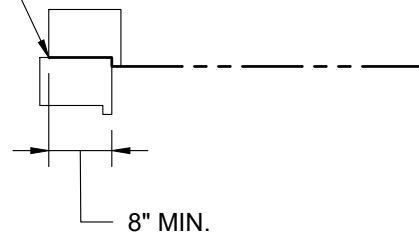
### TYPICAL DETAIL WALL ABUTTING STRUCTURE

Scale:	Drawn by:
3/8" = 1'-0"	MAH
Date:	Drawing number:
10/29/2025	D9D-25

8" MINIMUM



EXTEND GEOSYNTHETIC  
REINFORCEMENT TO WITHIN 1"  
OF THE LOWER BLOCK FACE



8" MIN.



This drawing is for illustrative purposes only and should not be used for construction without the signature of a registered professional engineer.

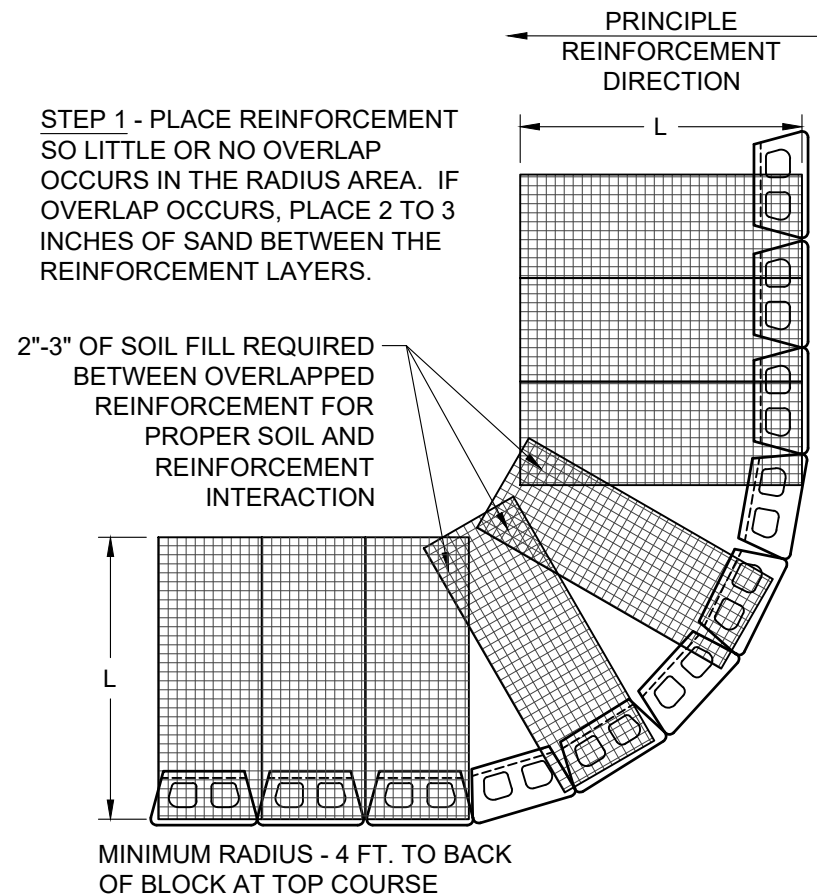
[www.anchordiamond.com](http://www.anchordiamond.com)

© 2025 ANCHOR Engineering, LLC®  
and © 2025 ANCHOR DIAMOND Group. All rights reserved

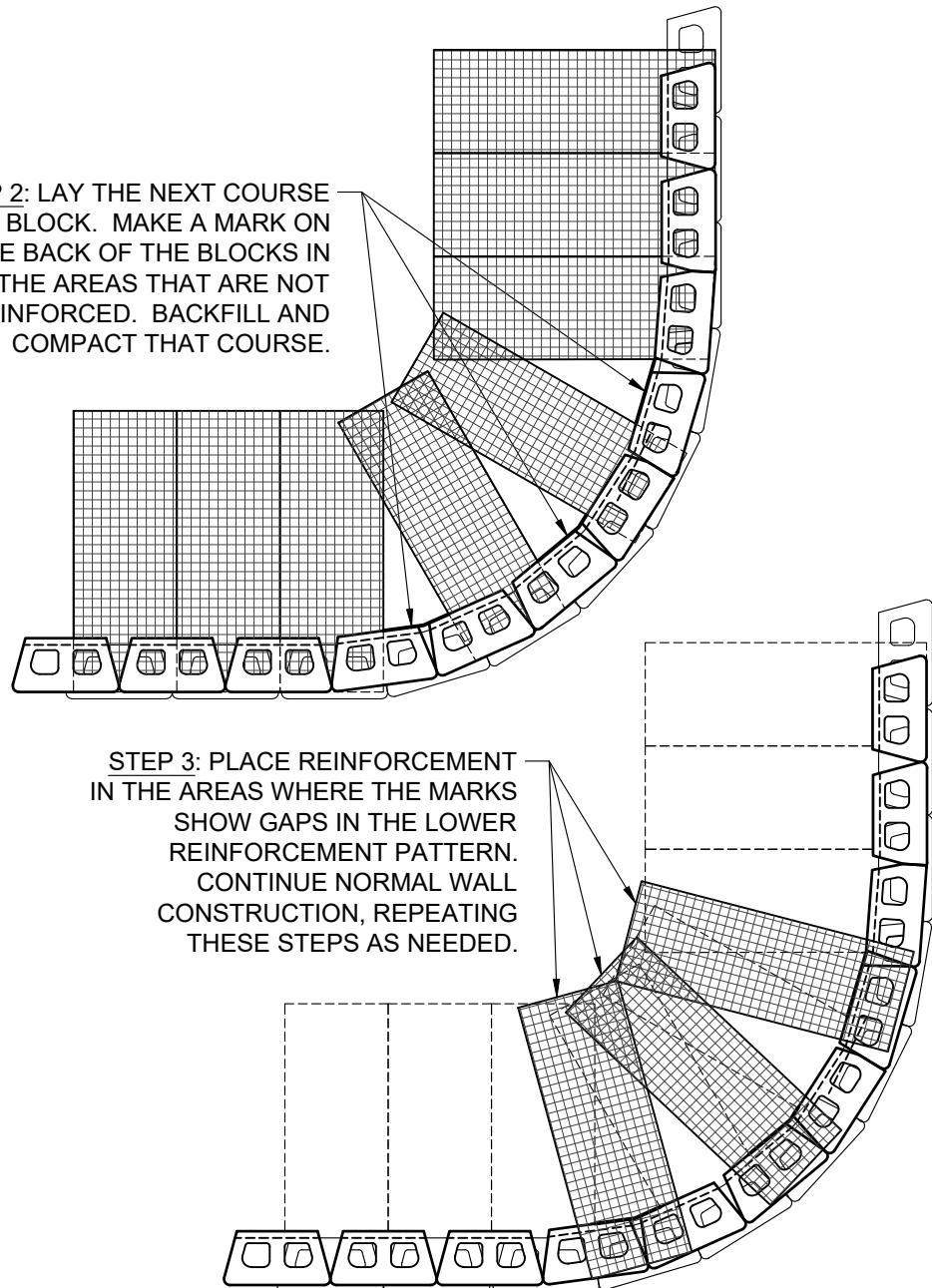
## Diamond® 9D Retaining Wall System

### TYPICAL REINFORCEMENT CONNECTION DETAIL

Scale:	Drawn by:
NONE	MAH
Date:	Drawing number:
10/29/2025	D9D-26



**STEP 2: LAY THE NEXT COURSE OF BLOCK. MAKE A MARK ON THE BACK OF THE BLOCKS IN THE AREAS THAT ARE NOT REINFORCED. BACKFILL AND COMPACT THAT COURSE.**



This drawing is for illustrative purposes only and should not be used for construction without the signature of a registered professional engineer.

www.anchordiamond.com

© 2025 ANCHOR Engineering, LLC®  
and © 2025 ANCHOR DIAMOND Group. All rights reserved

## Diamond® 9D Retaining Wall System

### TYPICAL DETAIL OUTSIDE CURVES

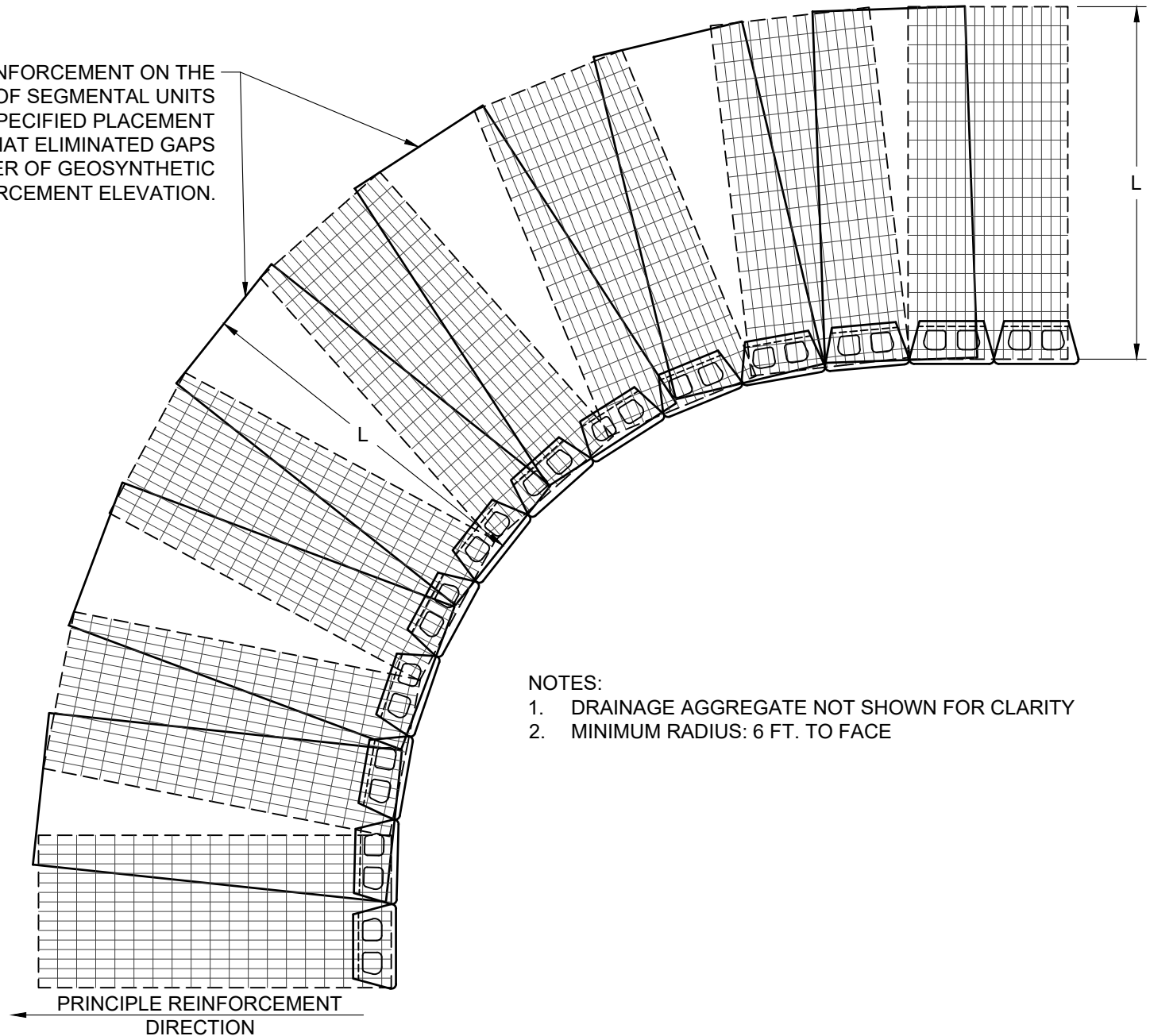
Scale:  
3/8" = 1'-0"

Drawn by:  
MAH

Date:  
10/29/2025

Drawing number:  
D9D-27

PLACE ADDITIONAL REINFORCEMENT ON THE  
NEXT COURSE OF SEGMENTAL UNITS  
IMMEDIATELY ABOVE THE SPECIFIED PLACEMENT  
ELEVATION IN A MANNER THAT ELIMINATED GAPS  
LEFT BY THE PREVIOUS LAYER OF GEOSYNTHETIC  
AT THE SPECIFIED REINFORCEMENT ELEVATION.



This drawing is for illustrative purposes only and should not be used for construction without the signature of a registered professional engineer.

[www.anchordiamond.com](http://www.anchordiamond.com)

© 2025 ANCHOR Engineering, LLC®  
and © 2025 ANCHOR DIAMOND Group. All rights reserved

## Diamond® 9D Retaining Wall System

### TYPICAL DETAIL INSIDE CURVES

Scale:  
3/8" = 1'-0"

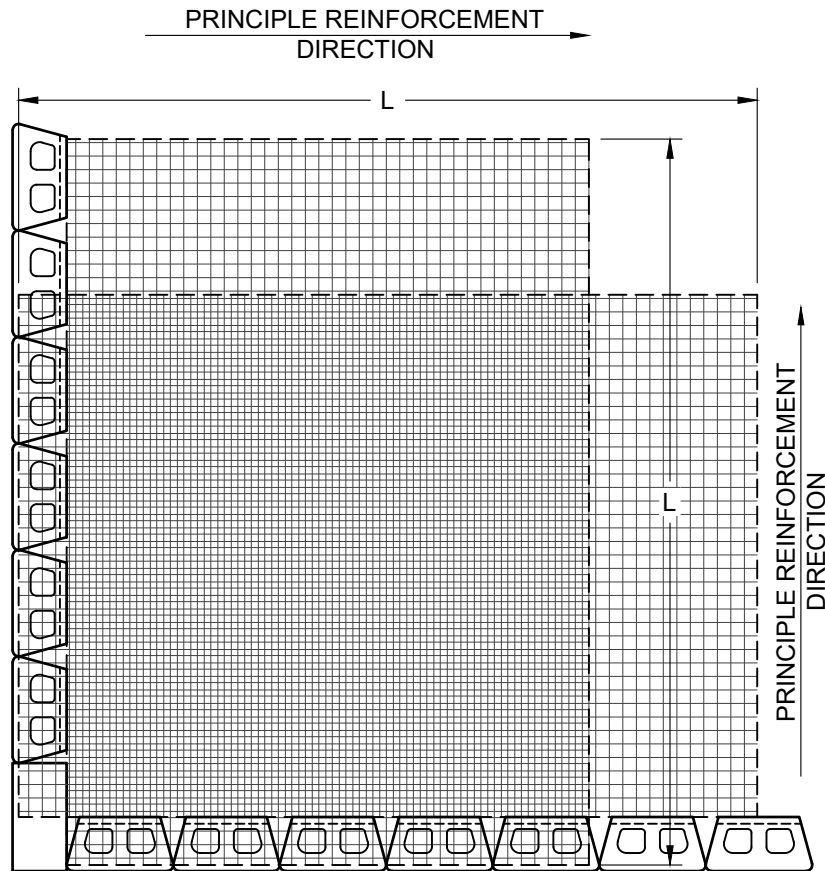
Drawn by:  
MAH

Date:  
10/29/2025

Drawing number:  
D9D-28

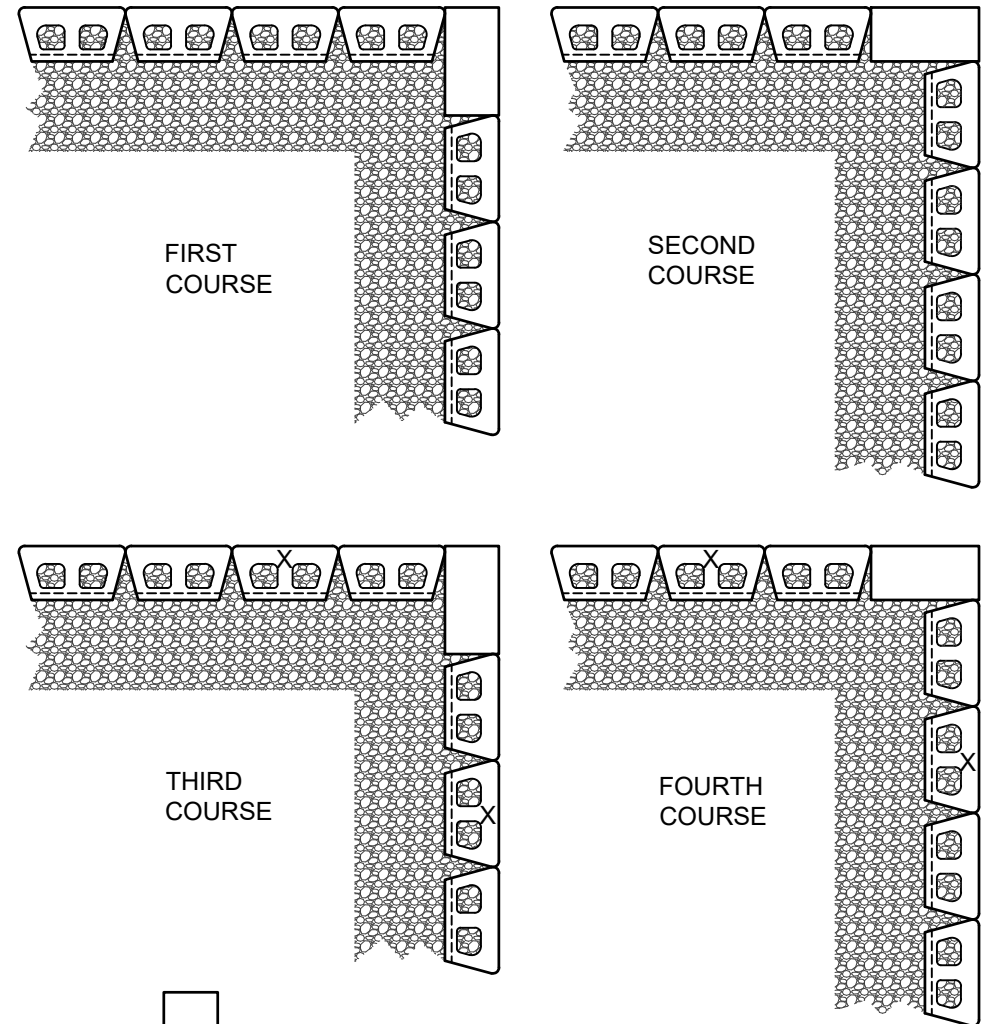
**NOTE:**

IN THE "CROSS-OVER AREA" OF REINFORCEMENT, ONE OF THE LAYERS OF REINFORCEMENT SHOULD BE LOWERED OR RAISED ONE COURSE TO ALLOW PLACEMENT OF THE REINFORCEMENT WITH THE PRINCIPLE REINFORCEMENT STRENGTH DIRECTION PROPERLY ORIENTATED. THE REINFORCEMENT SHOULD NOT EXTEND INTO THE SEGMENTAL RETAINING WALL UNITS ON THE RETURN LEG OF THE 90-DEGREE CORNER.



GEOGRID LAYOUT

NOTE: USE ADHESIVE ON EXPOSED PARTIAL UNITS  
CUT UNITS (X) TO MAINTAIN RUNNING BOND



BLOCK LAYOUT



This drawing is for illustrative purposes only and should not be used for construction without the signature of a registered professional engineer.

www.anchordiamond.com

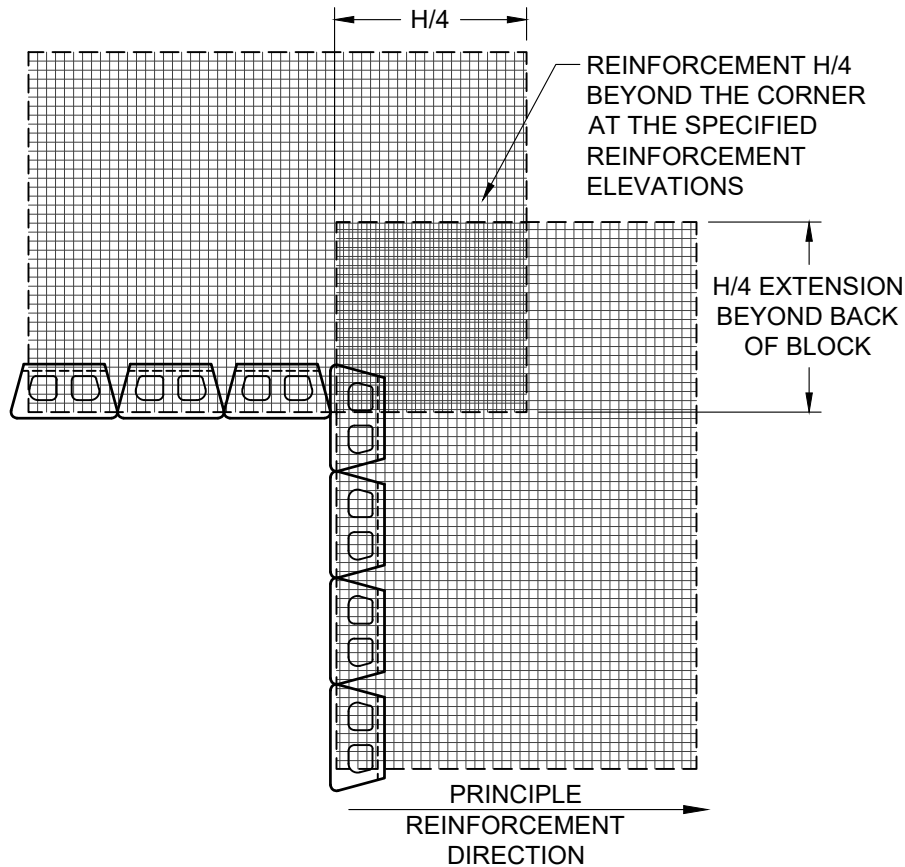
© 2025 ANCHOR Engineering, LLC®  
and © 2025 ANCHOR DIAMOND Group. All rights reserved

## Diamond® 9D Retaining Wall System

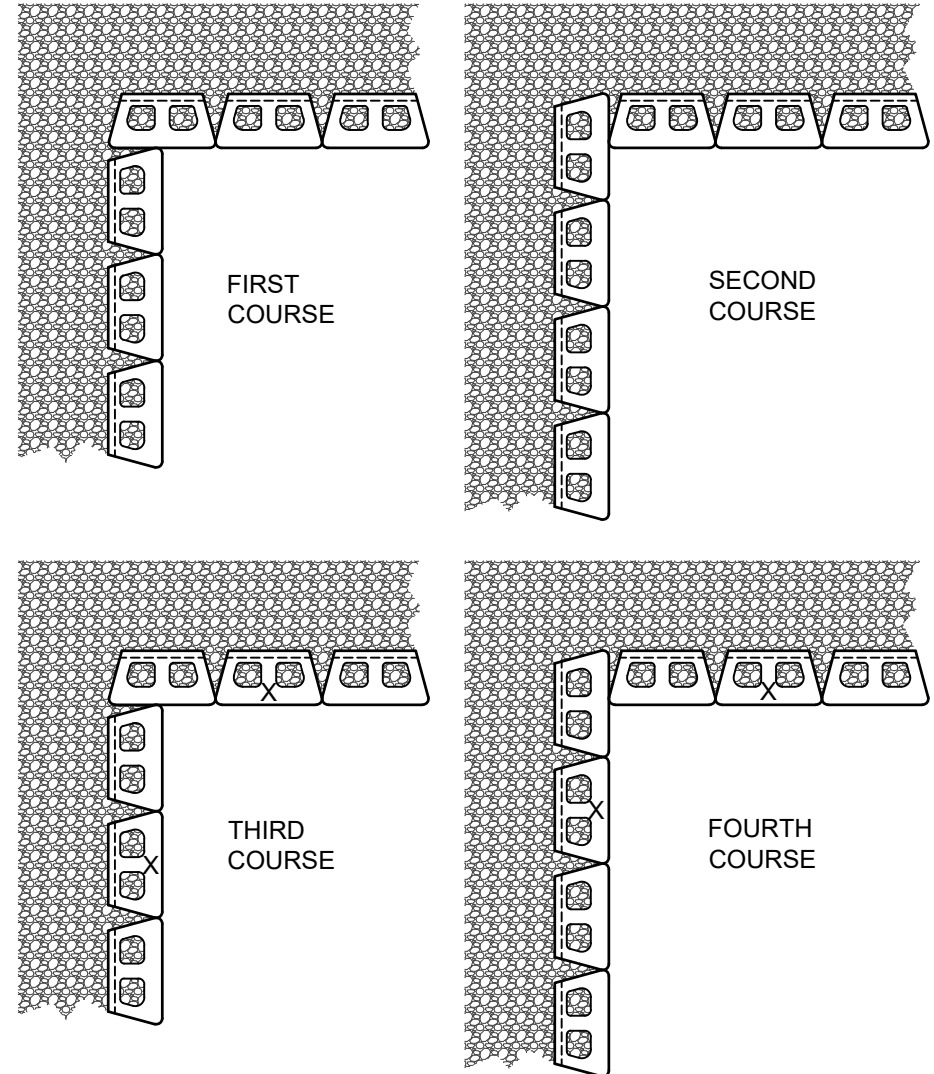
### TYPICAL DETAIL OUTSIDE CORNERS

Scale:	Drawn by:
3/8" = 1'-0"	MAH
Date:	Drawing number:
10/29/2025	D9D-29

NOTE: USE ADHESIVE ON EXPOSED PARTIAL UNITS  
CUT UNITS (X) TO MAINTAIN RUNNING BOND



GEOGRID LAYOUT



BLOCK LAYOUT



This drawing is for illustrative purposes only and should not be used for construction without the signature of a registered professional engineer.

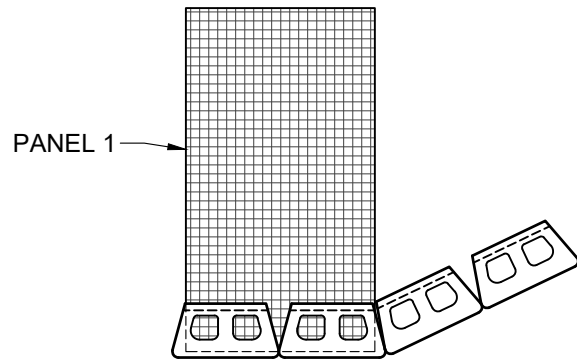
www.anchordiamond.com

© 2025 ANCHOR Engineering, LLC®  
and © 2025 ANCHOR DIAMOND Group. All rights reserved

## Diamond® 9D Retaining Wall System

### TYPICAL DETAIL INSIDE CORNERS

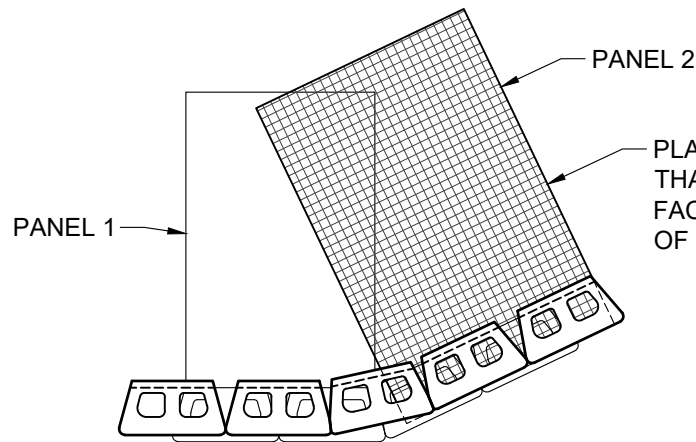
Scale:	Drawn by:
3/8" = 1'-0"	MAH
Date:	Drawing number:
10/29/2025	D9D-30



COURSE A

NOTES:

1. ALTERNATE COURSES "A" & "B" AS NEEDED TO FULL HEIGHT OF WALL.
2. MODIFY UNITS AS NEEDED TO MAINTAIN RUNNING BOND.
3. ADHERE ALL PARTIAL UNITS WITH CONSTRUCTION GRADE ADHESIVE.
4. ADJUST PLACEMENT IN FIELD TO ACHIEVE DESIRED ANGLE.
5. FREE-DRAINING AGGREGATE (NOT SHOWN) TO SPAN 10 FT. ALONG THE WALL FACE AND TO THE BACK OF THE REINFORCED ZONE.



COURSE B

PLACE GEOGRID REINFORCEMENT SUCH THAT ITS ALIGNMENT IS PERPENDICULAR TO FACE OF WALL AND THAT 100% COVERAGE OF REINFORCED FILL IS PROVIDED.



This drawing is for illustrative purposes only and should not be used for construction without the signature of a registered professional engineer.

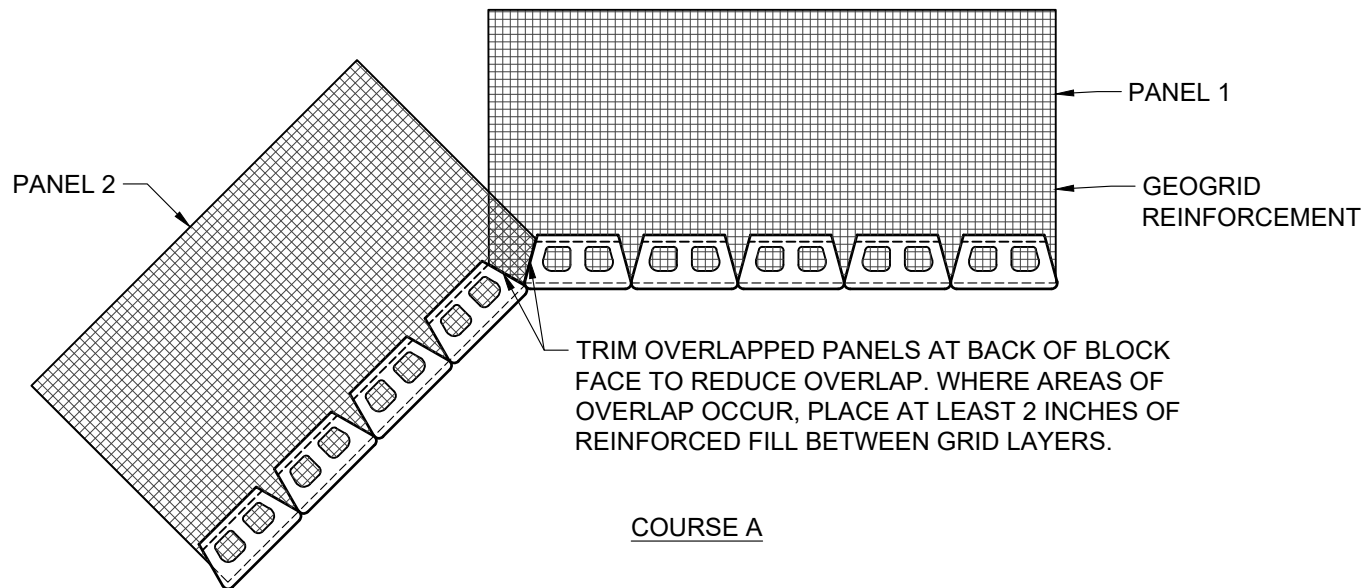
[www.anchordiamond.com](http://www.anchordiamond.com)

© 2025 ANCHOR Engineering, LLC®  
and © 2025 ANCHOR DIAMOND Group. All rights reserved

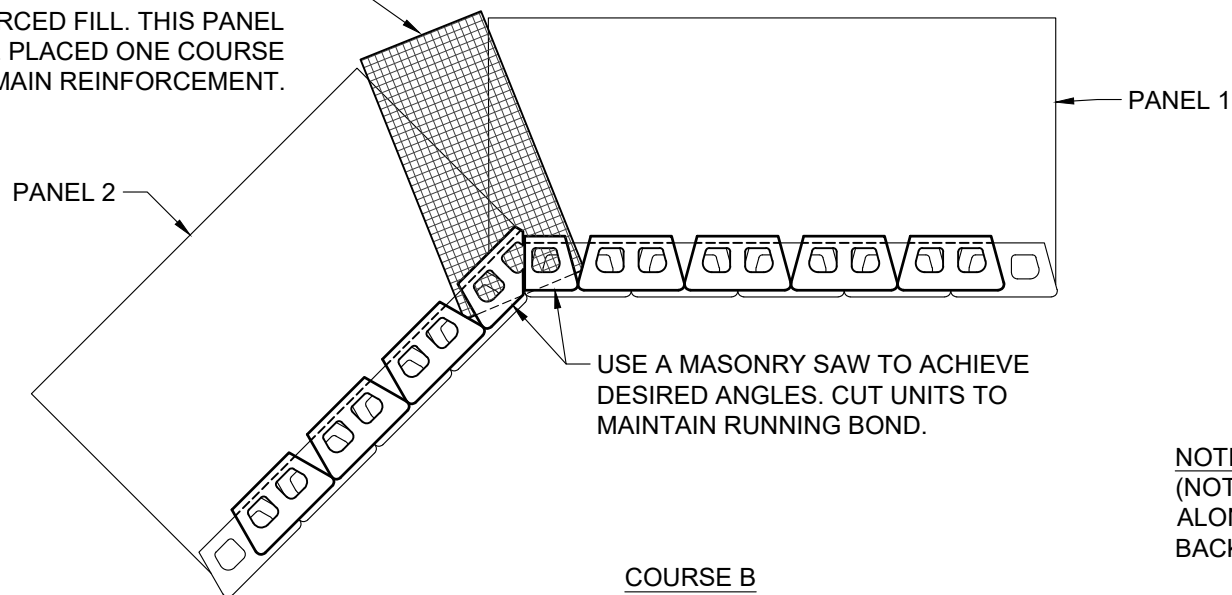
## Diamond® 9D Retaining Wall System

### TYPICAL DETAIL OUTSIDE ANGLED CORNERS

Scale:	3/8" = 1'-0"	Drawn by:	MAH
Date:	10/29/2025	Drawing number:	D9D-31



PLACE ADDITIONAL PANEL AT CORNER TO PROVIDE 100% GEOGRID COVERAGE OF REINFORCED FILL. THIS PANEL SHOULD BE PLACED ONE COURSE ABOVE MAIN REINFORCEMENT.



NOTE: FREE-DRAINING AGGREGATE (NOT SHOWN) TO SPAN 10 FT. ALONG THE WALL FACE AND TO THE BACK OF THE REINFORCED ZONE



This drawing is for illustrative purposes only and should not be used for construction without the signature of a registered professional engineer.

[www.anchordiamond.com](http://www.anchordiamond.com)

© 2025 ANCHOR Engineering, LLC®  
and © 2025 ANCHOR DIAMOND Group. All rights reserved

## Diamond® 9D Retaining Wall System

### TYPICAL DETAIL INSIDE ANGLED CORNERS

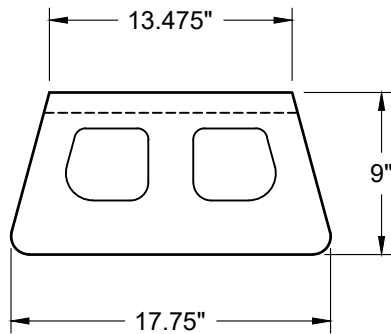
Scale:  
3/8" = 1'-0"

Drawn by:  
MAH

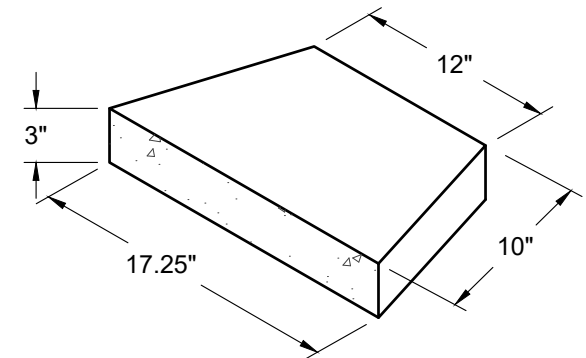
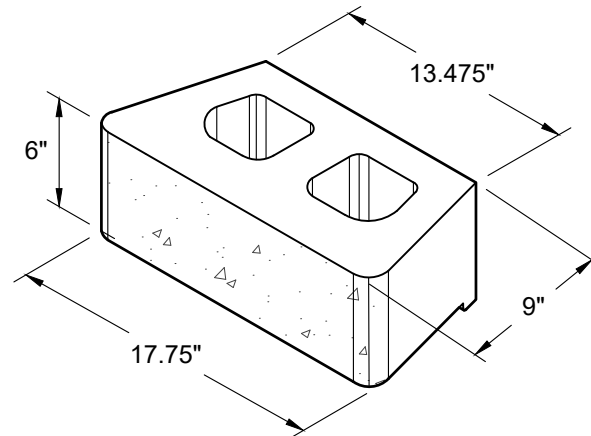
Date:  
10/29/2025

Drawing number:  
D9D-32

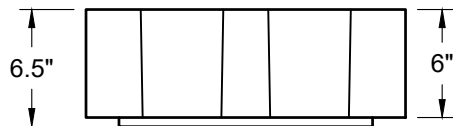




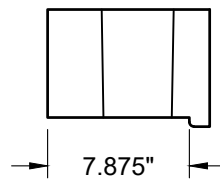
TOP VIEW



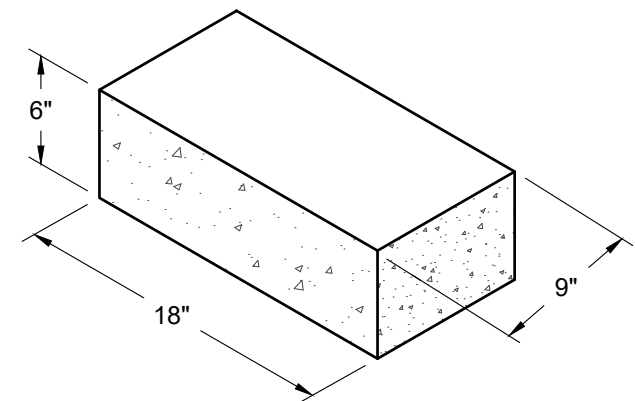
CAP UNIT



FRONT VIEW



SIDE VIEW



CORNER UNIT



This drawing is for illustrative purposes only and should not be used for construction without the signature of a registered professional engineer.

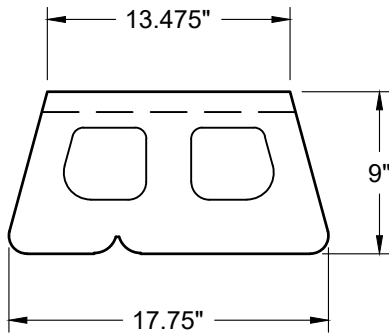
[www.anchordiamond.com](http://www.anchordiamond.com)

© 2025 ANCHOR Engineering, LLC®  
and © 2025 ANCHOR DIAMOND Group. All rights reserved

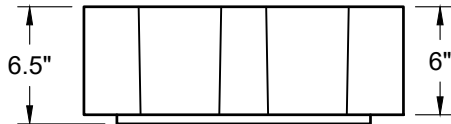
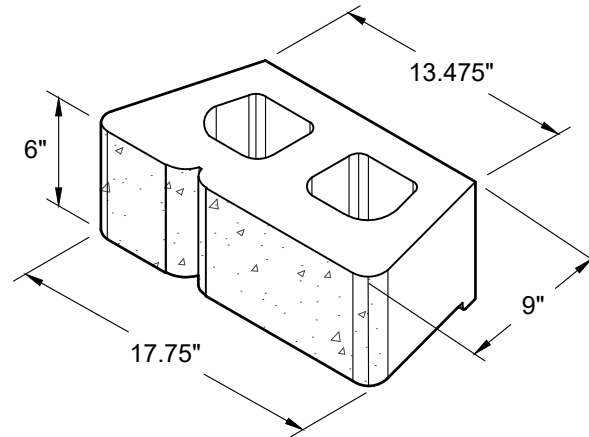
## Diamond® 9D Retaining Wall System

### INDIVIDUAL BLOCK DETAILS - STRAIGHT FACE

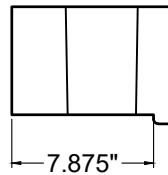
Scale:	NONE	Drawn by:	MAH
Date:	10/29/2025	Drawing number:	D9D-34



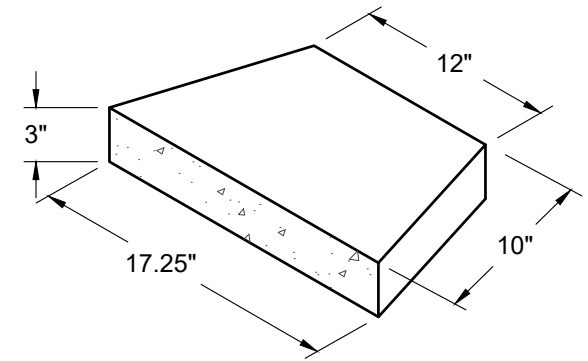
TOP VIEW



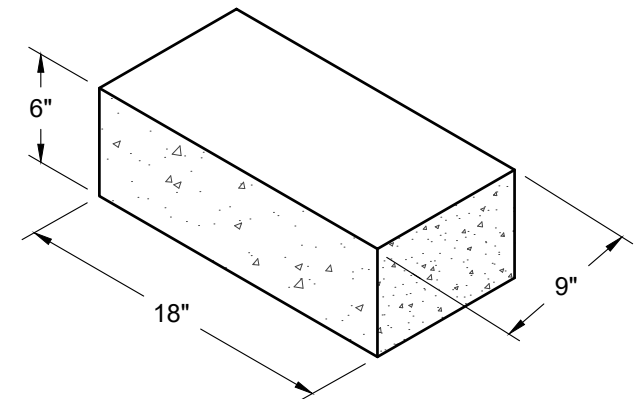
FRONT VIEW



SIDE VIEW



CAP UNIT



CORNER UNIT



This drawing is for illustrative purposes only and should not be used for construction without the signature of a registered professional engineer.

[www.anchordiamond.com](http://www.anchordiamond.com)

© 2025 ANCHOR Engineering, LLC®  
and © 2025 ANCHOR DIAMOND Group. All rights reserved

## Diamond® 9D Retaining Wall System

### INDIVIDUAL BLOCK DETAILS - VIRTUAL JOINT

Scale:	NONE	Drawn by:	MAH
Date:	10/29/2025	Drawing number:	D9D-36