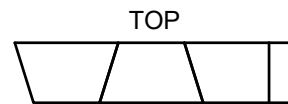
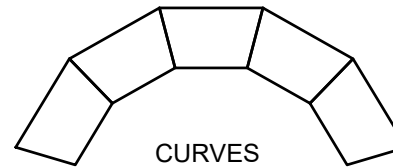
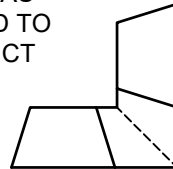


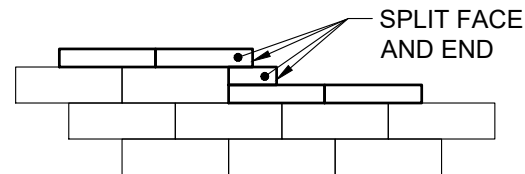
CAP UNIT



SAW CUT AS
REQUIRED TO
CONSTRUCT
MITERED
CORNER



CURVES



SPLIT FACE
AND END

WALL FACE

1. ALWAYS START CAPPING WALL FROM THE LOWEST ELEVATION.
2. LAYOUT CAPS PRIOR TO USING ADHESIVE.
3. CUT CAPS TO FIT. VARIOUS COMBINATIONS OF LONG AND SHORT CAP FACES WILL BE NECESSARY FOR RADII GREATER THAN THE MINIMUM.
4. ALTERNATE SHORT AND LONG CAP FACES EVERY OTHER CAP TO ACHIEVE A STRAIGHT ROW OF CAPS.
5. USE EXTERIOR-GRADE CONSTRUCTION ADHESIVE TO SECURE CAPS.



This drawing is for illustrative purposes only and should not be used for construction without the signature of a registered professional engineer.

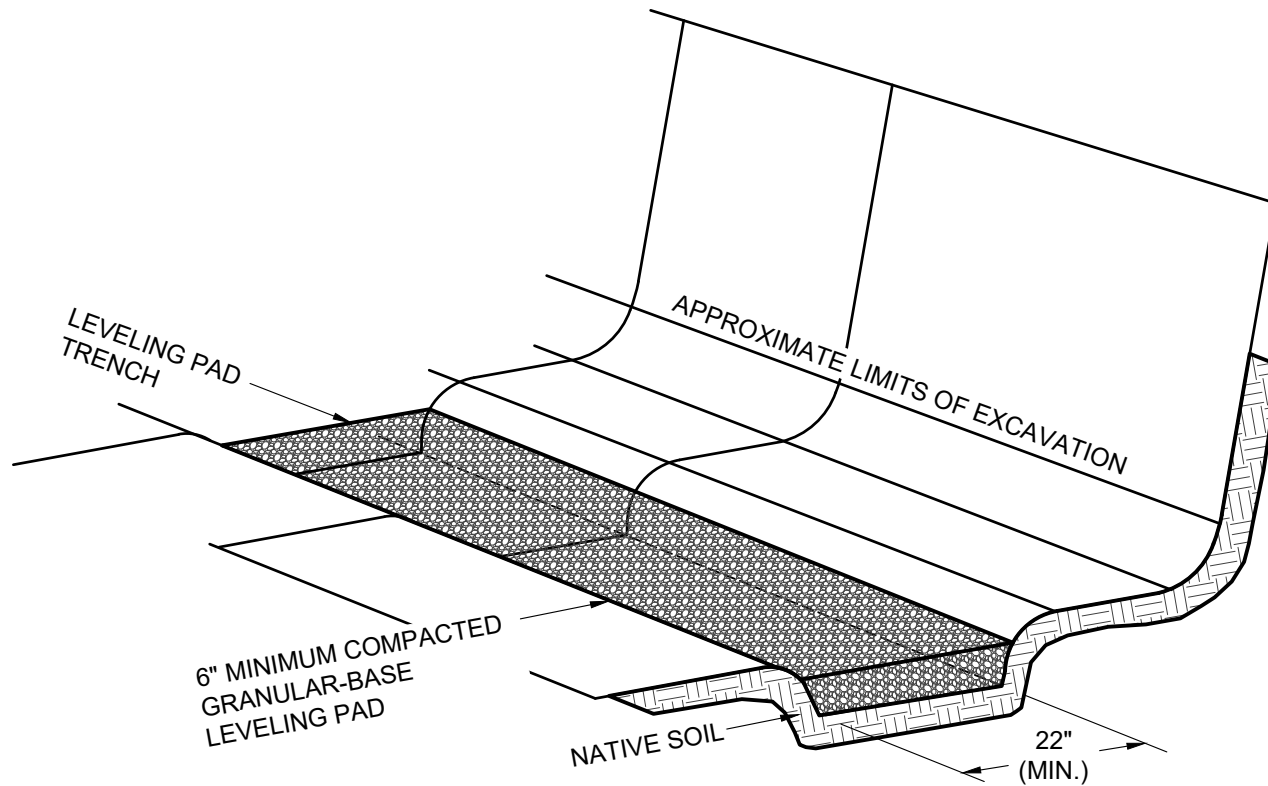
www.anchordiamond.com

© 2025 ANCHOR Engineering, LLC®
and © 2025 ANCHOR DIAMOND Group. All rights reserved

Diamond® 10D Retaining Wall System

TYPICAL CAPPING DETAILS

Scale:	NONE	Drawn by:	MAH
Date:	10/29/2025	Drawing number:	D10D-01



This drawing is for illustrative purposes only and should not be used for construction without the signature of a registered professional engineer.

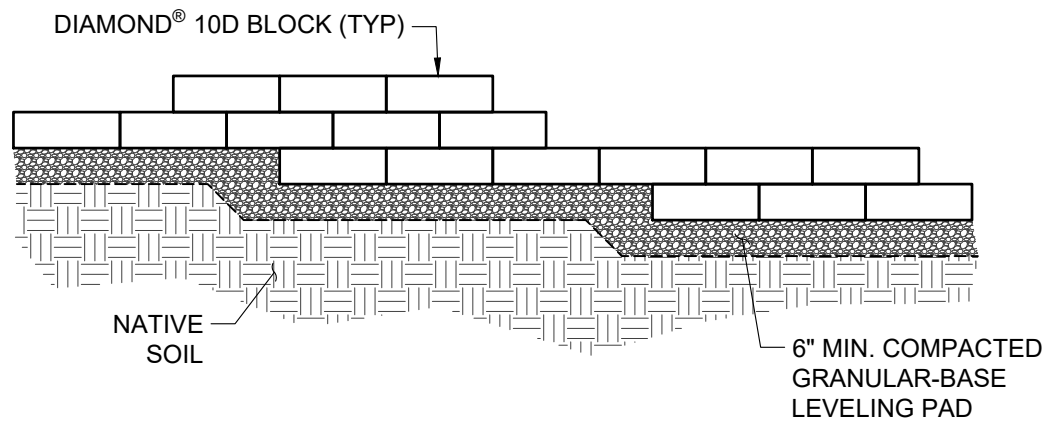
www.anchordiamond.com

© 2025 ANCHOR Engineering, LLC®
and © 2025 ANCHOR DIAMOND Group. All rights reserved

Diamond® 10D Retaining Wall System

TYPICAL BASE PREPARATION

Scale:	NONE	Drawn by:	MAH
Date:	10/29/2025	Drawing number:	D10D-02



This drawing is for illustrative purposes only and should not be used for construction without the signature of a registered professional engineer.

www.anchordiamond.com

© 2025 ANCHOR Engineering, LLC®
and © 2025 ANCHOR DIAMOND Group. All rights reserved

Diamond® 10D Retaining Wall System

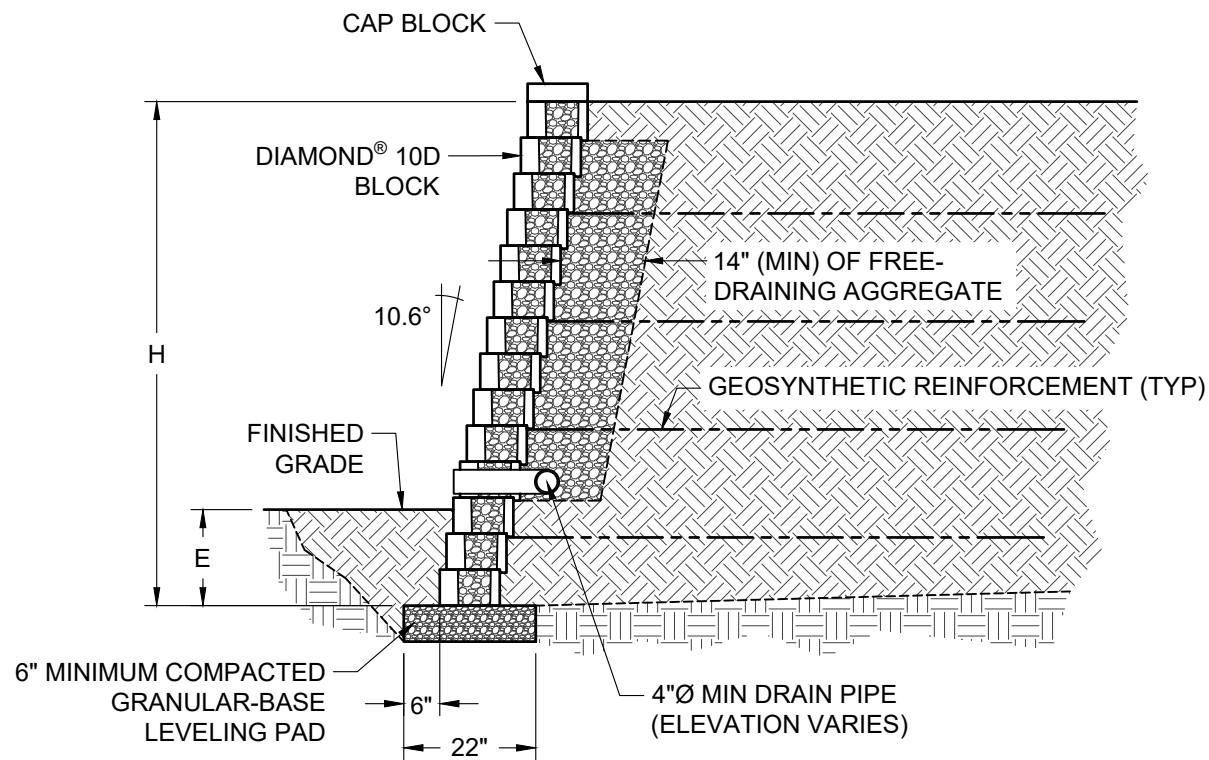
TYPICAL BASE STEP-UP

Scale:
3/8" = 1'-0"

Drawn by:
MAH

Date:
10/29/2025

Drawing number:
D10D-03



This drawing is for illustrative purposes only and should not be used for construction without the signature of a registered professional engineer.

www.anchordiamond.com

© 2025 ANCHOR Engineering, LLC®
and © 2025 ANCHOR DIAMOND Group. All rights reserved

Diamond® 10D Retaining Wall System

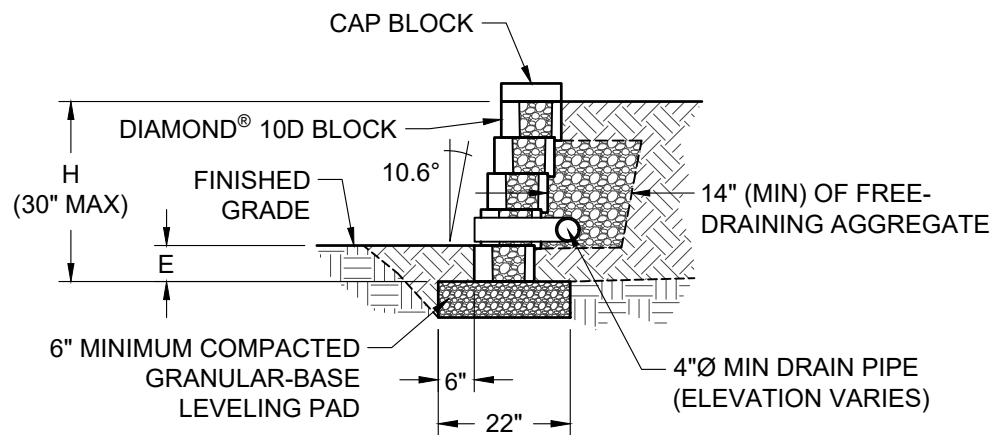
TYPICAL REINFORCED CROSS SECTION

Scale:
3/8" = 1'-0"

Drawn by:
MAH

Date:
10/29/2025

Drawing number:
D10D-04



This drawing is for illustrative purposes only and should not be used for construction without the signature of a registered professional engineer.

www.anchordiamond.com

© 2025 ANCHOR Engineering, LLC®
and © 2025 ANCHOR DIAMOND Group. All rights reserved

Diamond® 10D Retaining Wall System

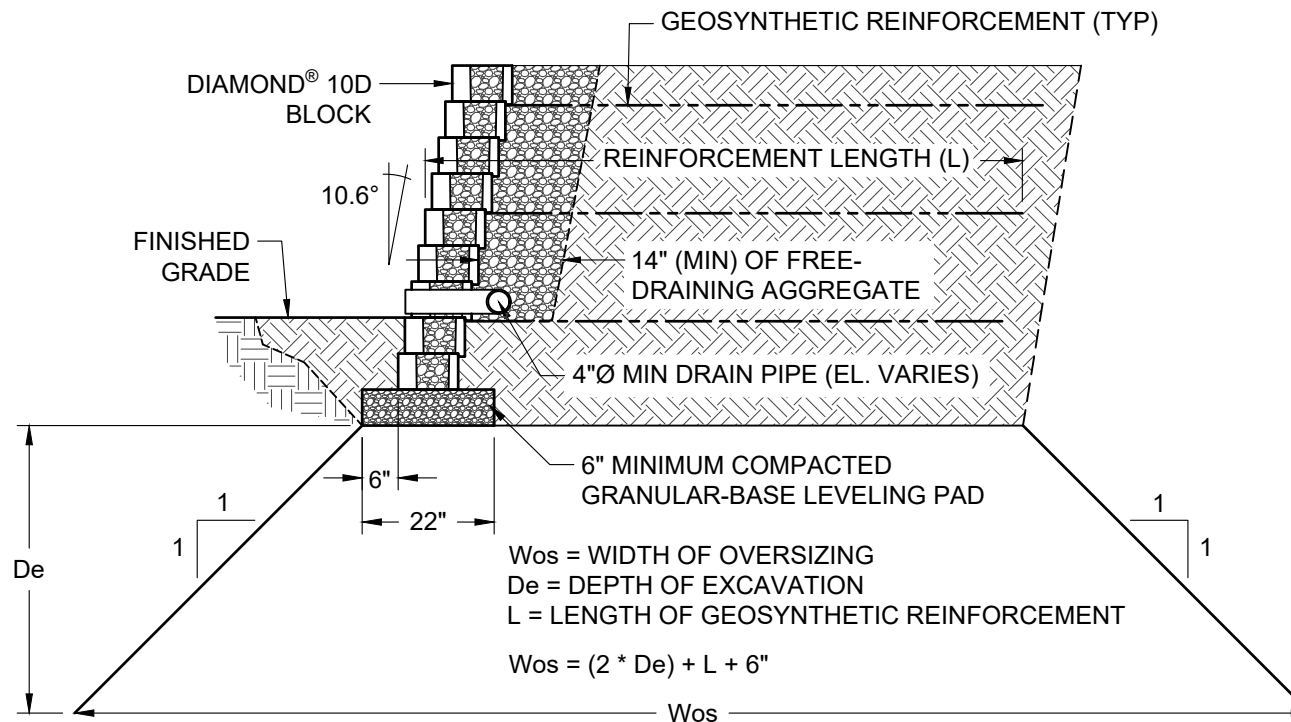
TYPICAL GRAVITY CROSS SECTION

Scale:
3/8" = 1'-0"

Drawn by:
MAH

Date:
10/29/2025

Drawing number:
D10D-05



This drawing is for illustrative purposes only and should not be used for construction without the signature of a registered professional engineer.

www.anchordiamond.com

© 2025 ANCHOR Engineering, LLC®
 and © 2025 ANCHOR DIAMOND Group. All rights reserved

Diamond® 10D Retaining Wall System

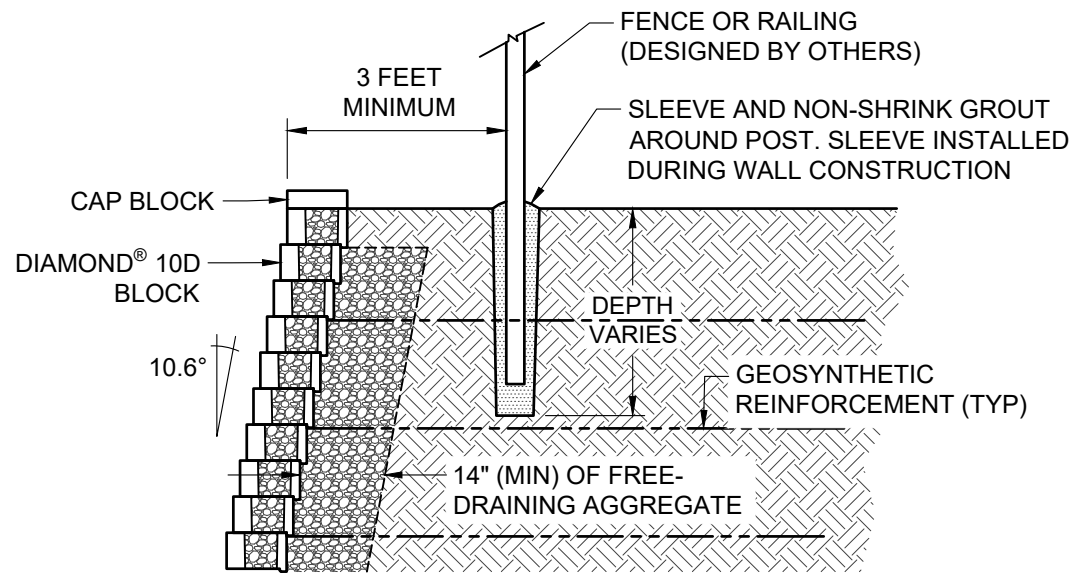
TYPICAL EXCAVATION OVERSIZING

Scale:
 3/8" = 1'-0"

Drawn by:
 MAH

Date:
 10/29/2025

Drawing number:
 D10D-06



This drawing is for illustrative purposes only and should not be used for construction without the signature of a registered professional engineer.

www.anchordiamond.com

© 2025 ANCHOR Engineering, LLC®
and © 2025 ANCHOR DIAMOND Group. All rights reserved

Diamond® 10D Retaining Wall System

TYPICAL FENCE CROSS SECTION

Scale:
3/8" = 1'-0"

Drawn by:
MAH

Date:
10/29/2025

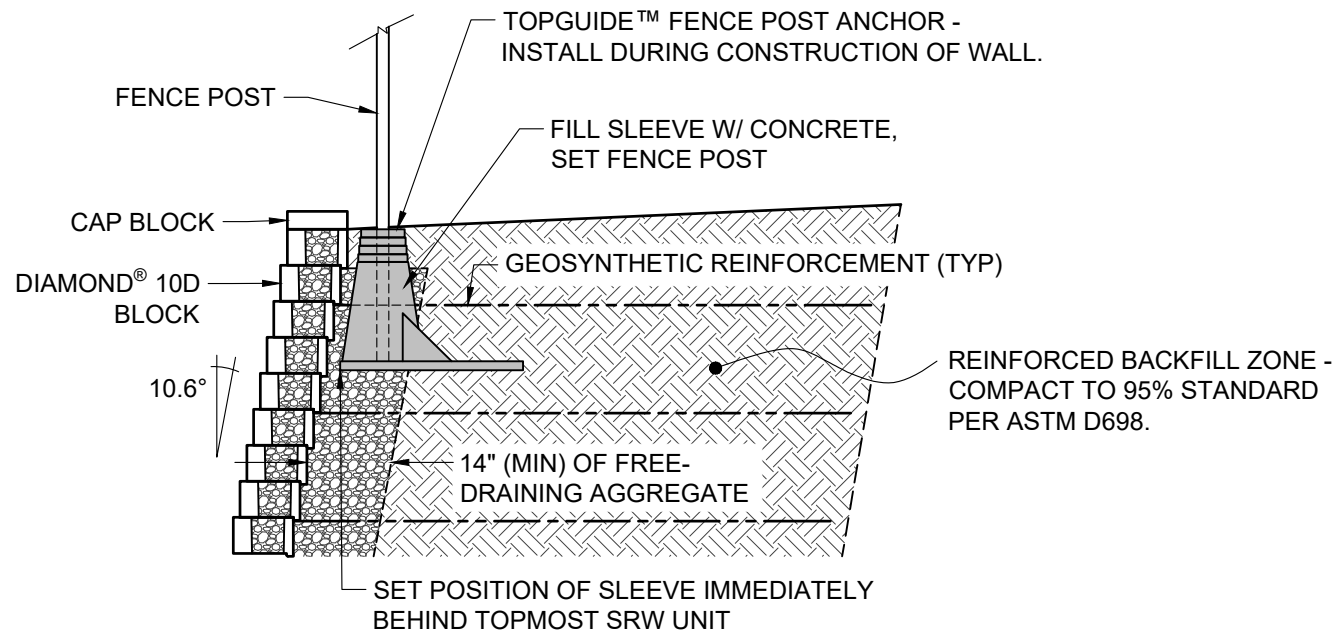
Drawing number:
D10D-07

NOTES:

THE USE OF TOPGUIDE™ IS LIMITED TO HANDRAIL AND SAFETY RAIL APPLICATIONS PER IBC 1607.8.1

THE TOPGUIDE™ PRODUCT SHALL BE EVENLY SPACED. USE OF THE TOPGUIDE™ SYSTEM IS LIMITED TO THE FOLLOWING FENCING APPLICATIONS WITHOUT CONSIDERATION OF WIND LOAD:

- 8-FOOT HIGH AND UNDER CHAIN LINK FENCES
- 6-FOOT HIGH AND UNDER WOOD FENCES WITH GAPS BETWEEN BOARDS
- 6-FOOT HIGH AND UNDER PVC, STEEL, ALUMINUM, OR WROUGHT IRON FENCES



This drawing is for illustrative purposes only and should not be used for construction without the signature of a registered professional engineer.

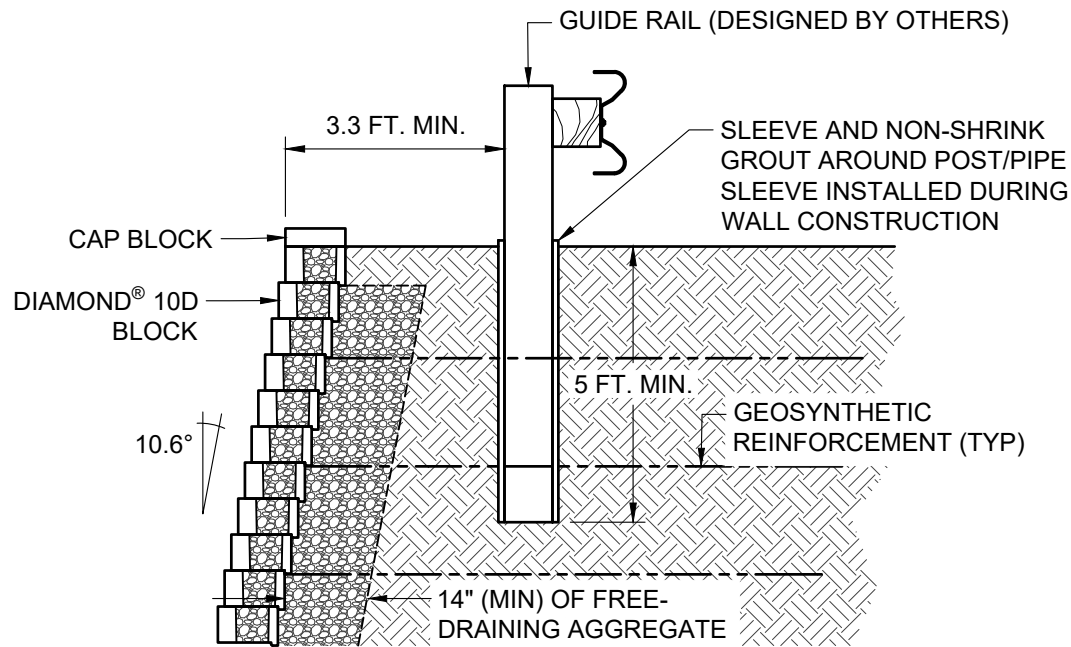
www.anchordiamond.com

© 2025 ANCHOR Engineering, LLC®
and © 2025 ANCHOR DIAMOND Group. All rights reserved

Diamond® 10D Retaining Wall System

ALTERNATE FENCE CROSS SECTION

Scale:	3/8" = 1'-0"	Drawn by:	MAH
Date:	10/29/2025	Drawing number:	D10D-08



ANCHOR
DIAMOND

This drawing is for illustrative purposes only and should not be used for construction without the signature of a registered professional engineer.

www.anchordiamond.com

© 2025 ANCHOR Engineering, LLC®
and © 2025 ANCHOR DIAMOND Group. All rights reserved

Diamond® 10D Retaining Wall System

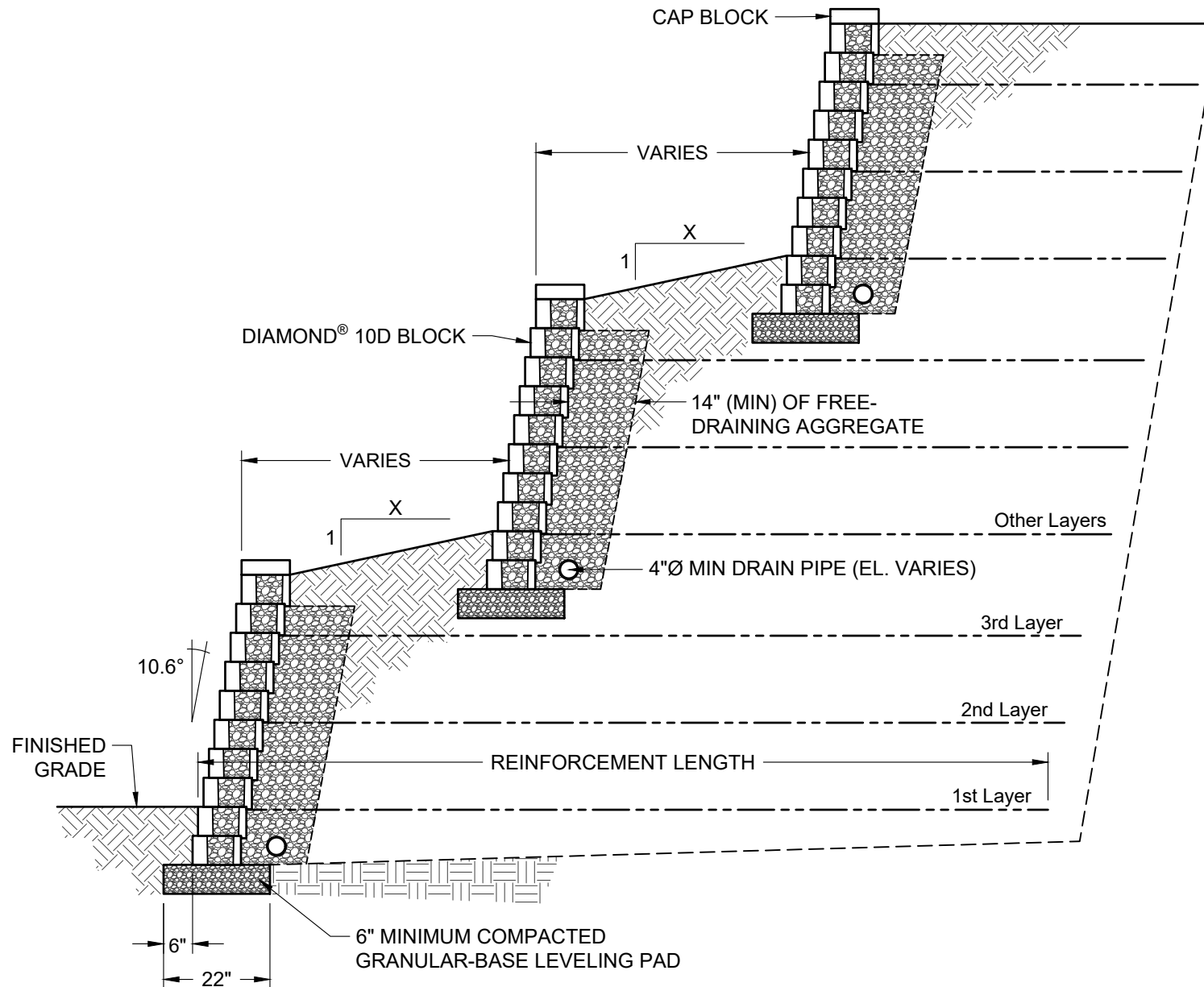
TYPICAL GUIDE RAIL CROSS SECTION

Scale:
3/8" = 1'-0"

Drawn by:
MAH

Date:
10/29/2025

Drawing number:
D10D-09



This drawing is for illustrative purposes only and should not be used for construction without the signature of a registered professional engineer.

www.anchordiamond.com

© 2025 ANCHOR Engineering, LLC®
and © 2025 ANCHOR DIAMOND Group. All rights reserved

Diamond® 10D Retaining Wall System

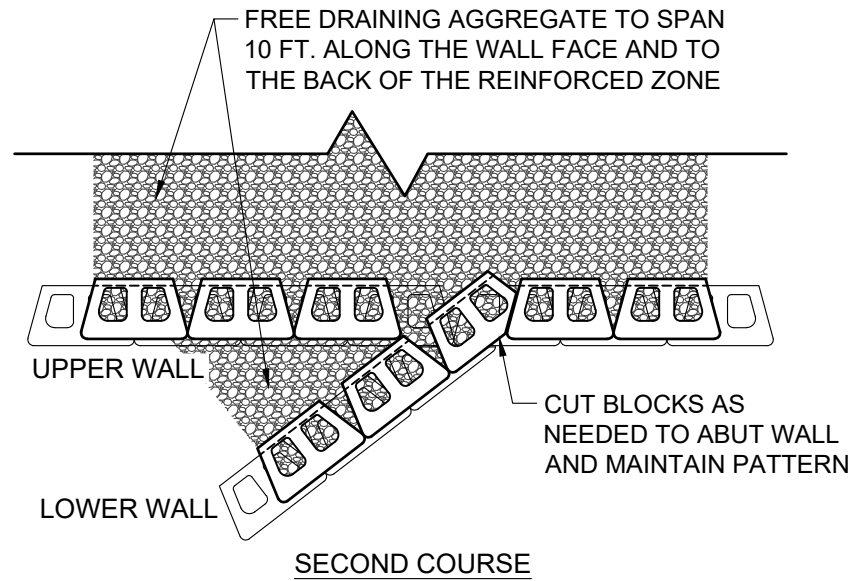
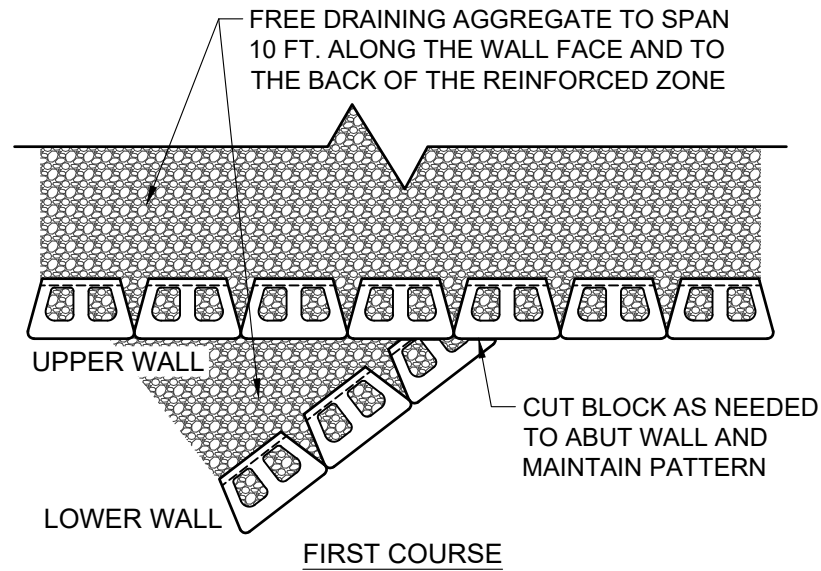
TYPICAL TERRACED CROSS SECTION

Scale:
3/8" = 1'-0"

Drawn by:
MAH

Date:
10/29/2025

Drawing number:
D10D-10



This drawing is for illustrative purposes only and should not be used for construction without the signature of a registered professional engineer.

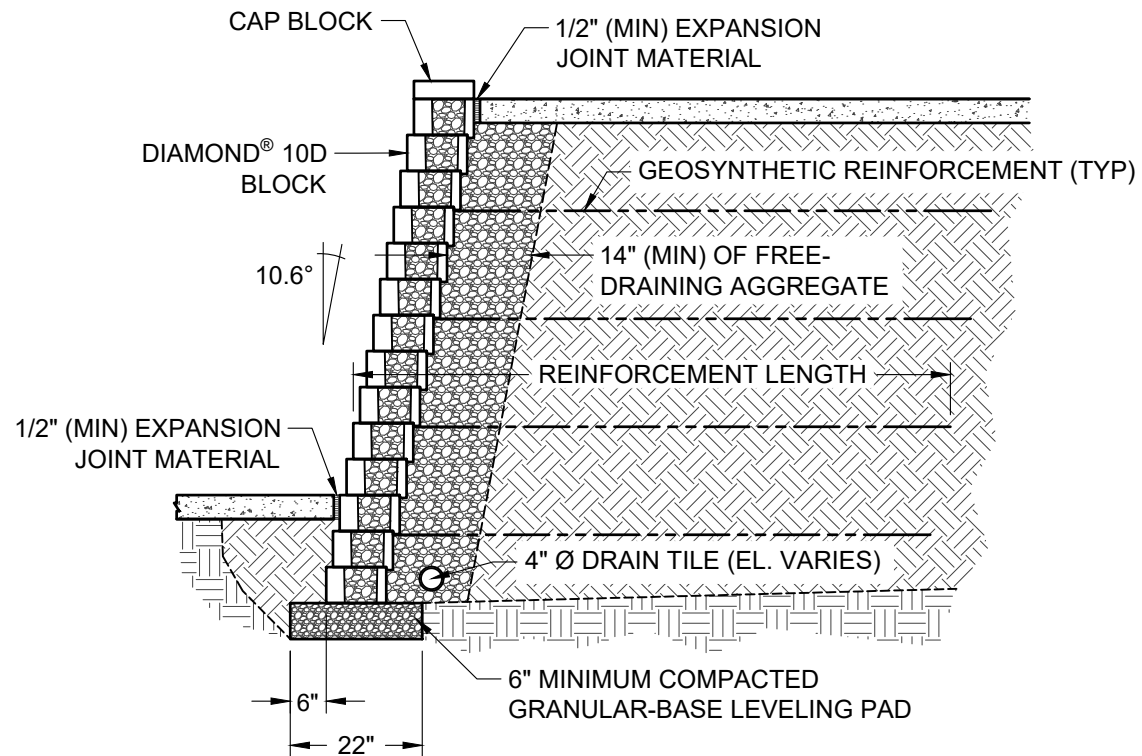
www.anchordiamond.com

© 2025 ANCHOR Engineering, LLC®
and © 2025 ANCHOR DIAMOND Group. All rights reserved

Diamond® 10D Retaining Wall System

TYPICAL TERRACE CONNECTION

Scale:	Drawn by:
3/8" = 1'-0"	MAH
Date:	Drawing number:
10/29/2025	D10D-11



This drawing is for illustrative purposes only and should not be used for construction without the signature of a registered professional engineer.

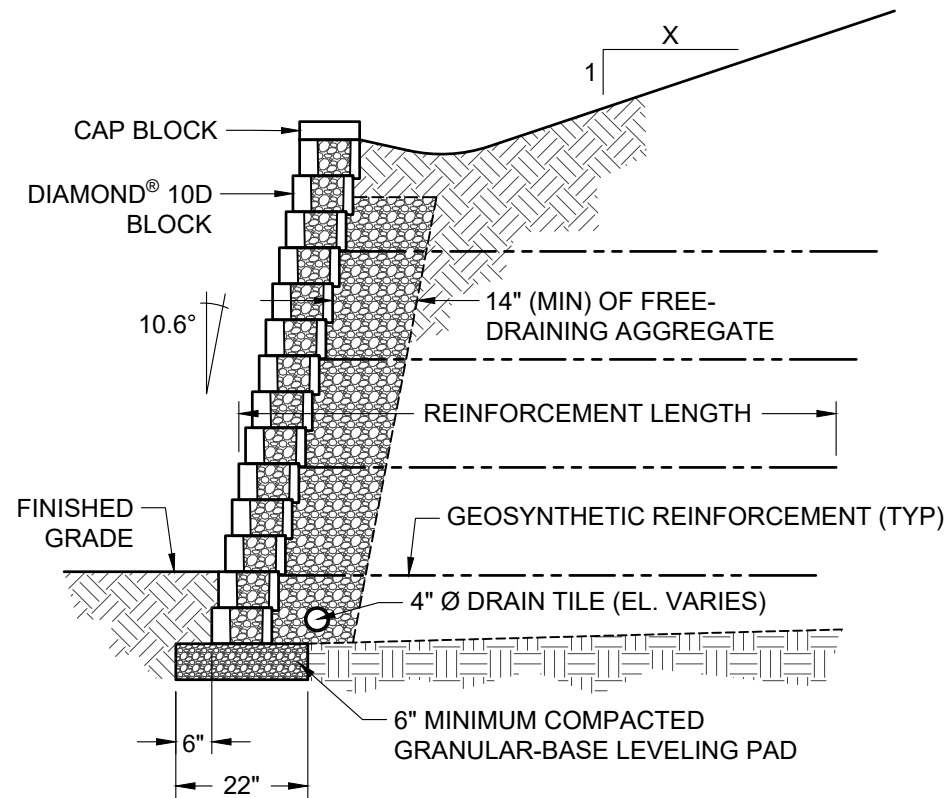
www.anchordiamond.com

© 2025 ANCHOR Engineering, LLC®
and © 2025 ANCHOR DIAMOND Group. All rights reserved

Diamond® 10D Retaining Wall System

TYPICAL CROSS SECTION WITH SIDEWALK

Scale:	Drawn by:
3/8" = 1'-0"	MAH
Date:	Drawing number:
10/29/2025	D10D-12



This drawing is for illustrative purposes only and should not be used for construction without the signature of a registered professional engineer.

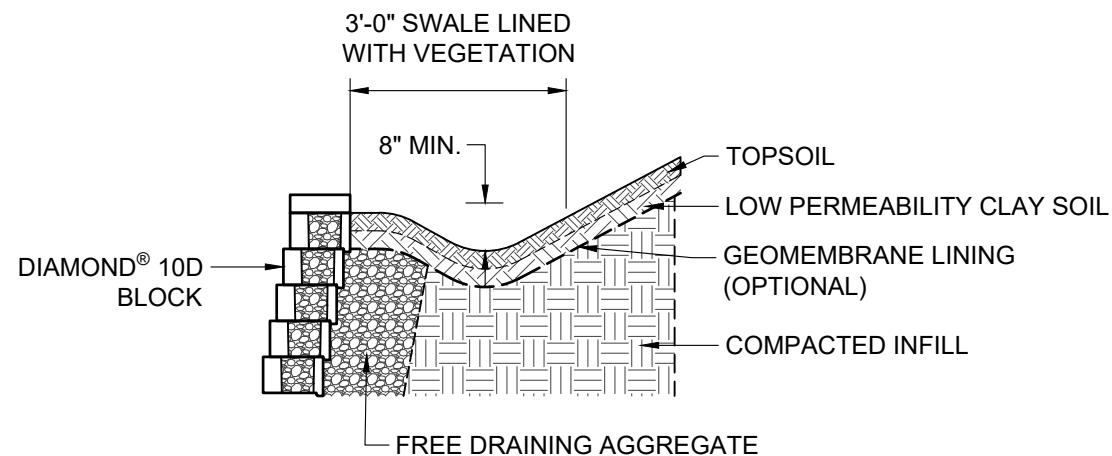
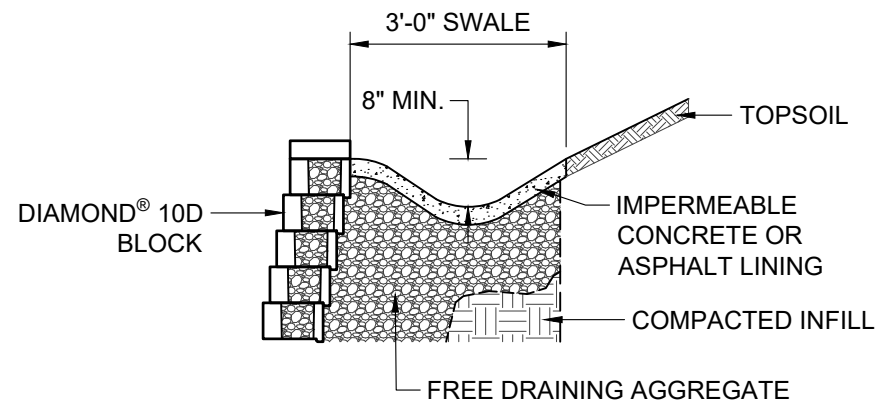
www.anchordiamond.com

© 2025 ANCHOR Engineering, LLC®
and © 2025 ANCHOR DIAMOND Group. All rights reserved

Diamond® 10D Retaining Wall System

TYPICAL CROSS SECTION WITH CREST SLOPE

Scale:	Drawn by:
3/8" = 1'-0"	MAH
Date:	Drawing number:
10/29/2025	D10D-13



REFERENCE THE NCMA DESIGN MANUAL FOR ADDITIONAL DETAILS



This drawing is for illustrative purposes only and should not be used for construction without the signature of a registered professional engineer.

www.anchordiamond.com

© 2025 ANCHOR Engineering, LLC®
and © 2025 ANCHOR DIAMOND Group. All rights reserved

Diamond® 10D Retaining Wall System

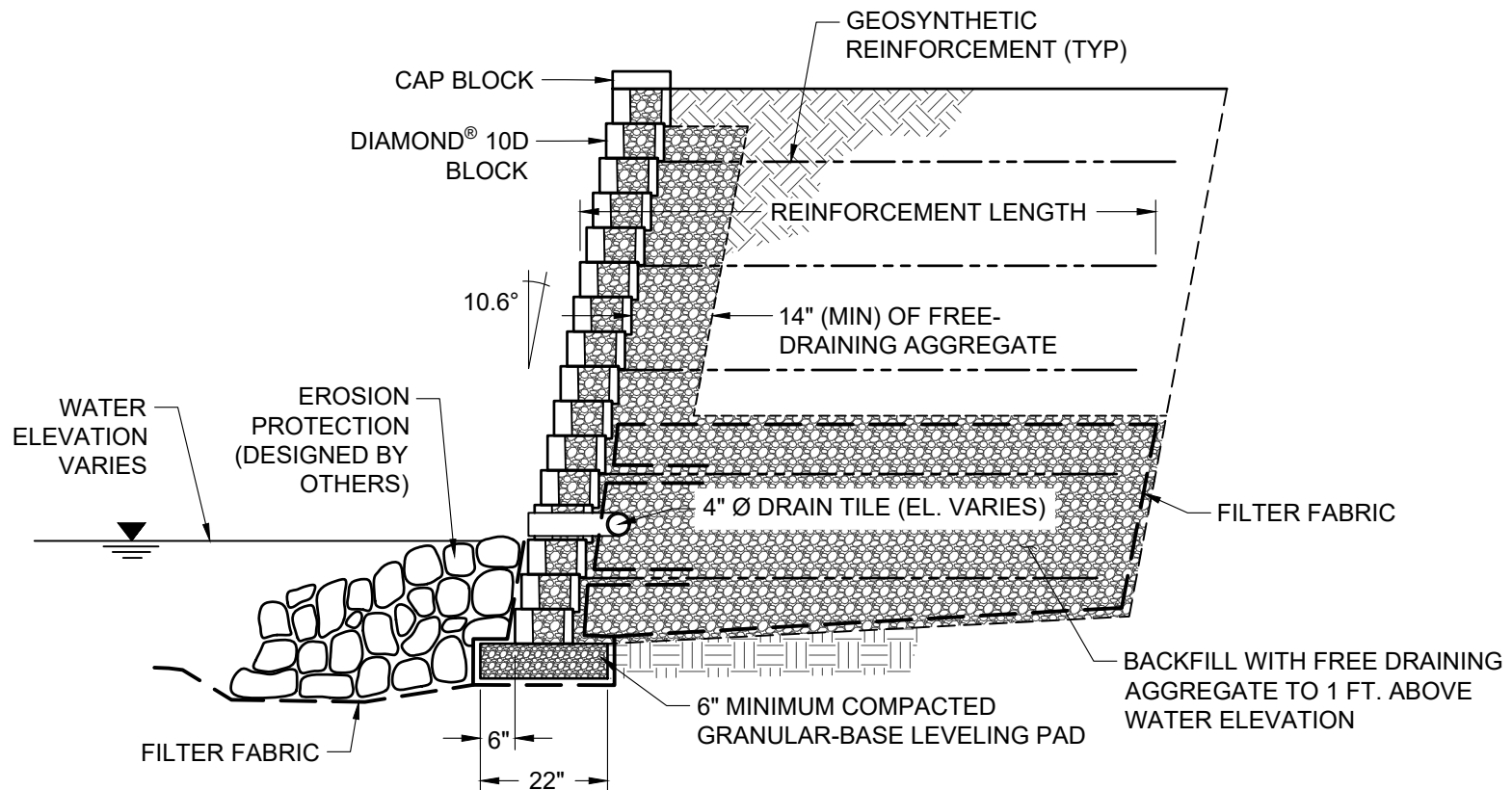
TYPICAL DRAINAGE SWALE CROSS SECTIONS

Scale:
3/8" = 1'-0"

Drawn by:
MAH

Date:
10/29/2025

Drawing number:
D10D-14



This drawing is for illustrative purposes only and should not be used for construction without the signature of a registered professional engineer.

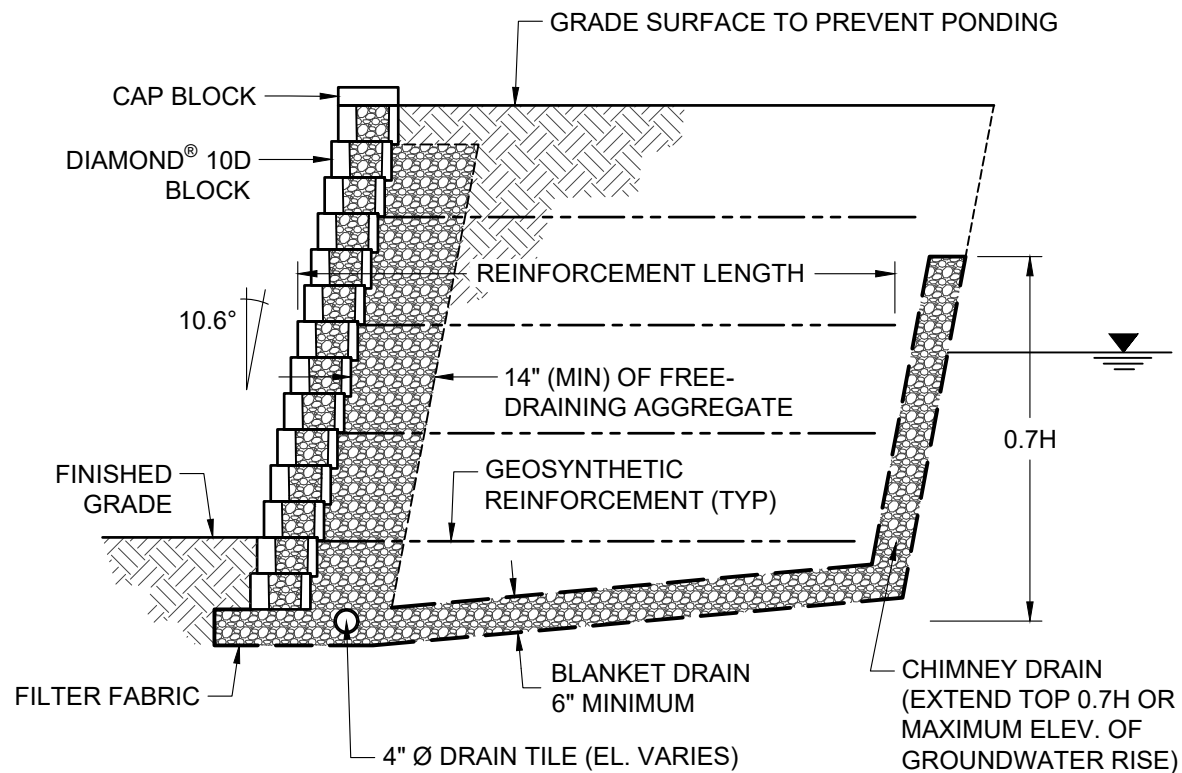
www.anchordiamond.com

© 2025 ANCHOR Engineering, LLC®
and © 2025 ANCHOR DIAMOND Group. All rights reserved

Diamond® 10D Retaining Wall System

TYPICAL SHORELINE CROSS SECTION

Scale:	Drawn by:
3/8" = 1'-0"	MAH
Date:	Drawing number:
10/29/2025	D10D-15



ANCHOR
DIAMOND

This drawing is for illustrative purposes only and should not be used for construction without the signature of a registered professional engineer.

www.anchordiamond.com

© 2025 ANCHOR Engineering, LLC®
and © 2025 ANCHOR DIAMOND Group. All rights reserved

Diamond® 10D Retaining Wall System

TYPICAL GROUNDWATER INTRUSION CROSS SECTION

Scale:

3/8" = 1'-0"

Drawn by:

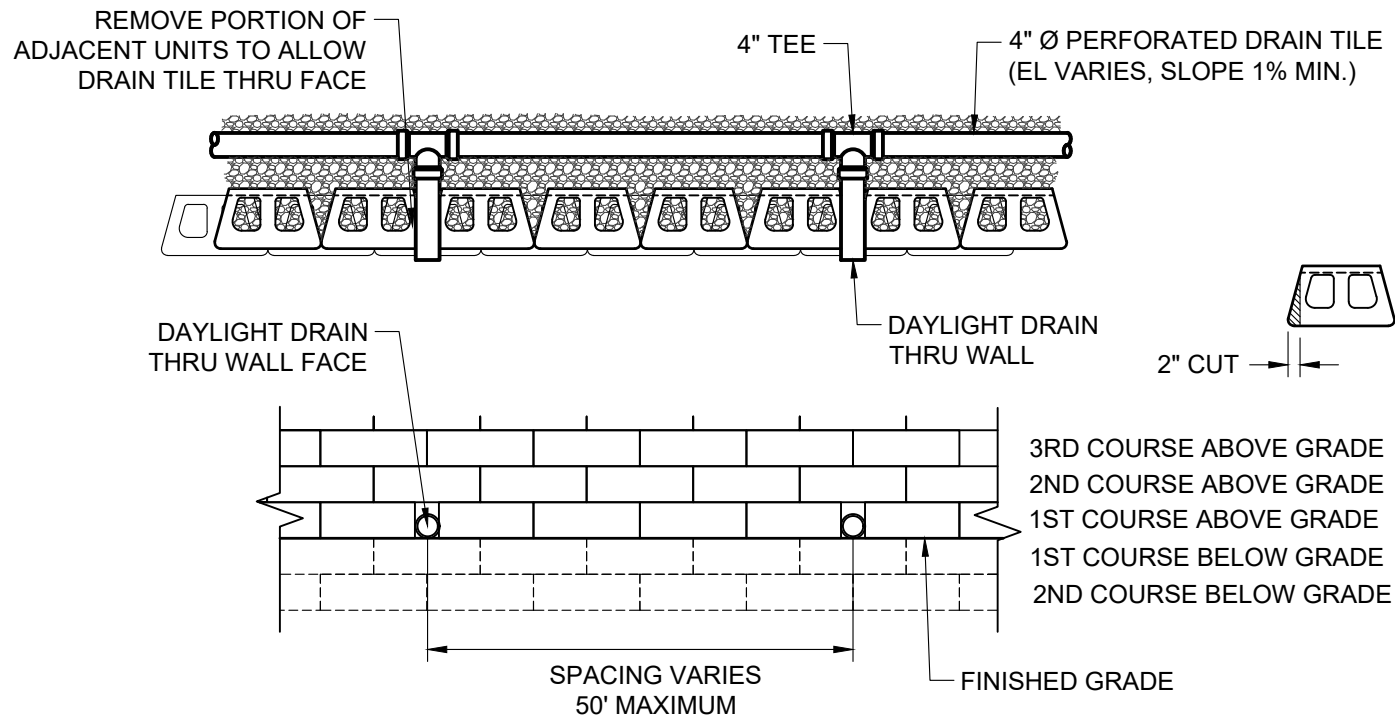
MAH

Date:

10/29/2025

Drawing number:

D10D-16



ANCHOR
DIAMOND

This drawing is for illustrative purposes only and should not be used for construction without the signature of a registered professional engineer.

www.anchordiamond.com

© 2025 ANCHOR Engineering, LLC®
and © 2025 ANCHOR DIAMOND Group. All rights reserved

Diamond® 10D Retaining Wall System

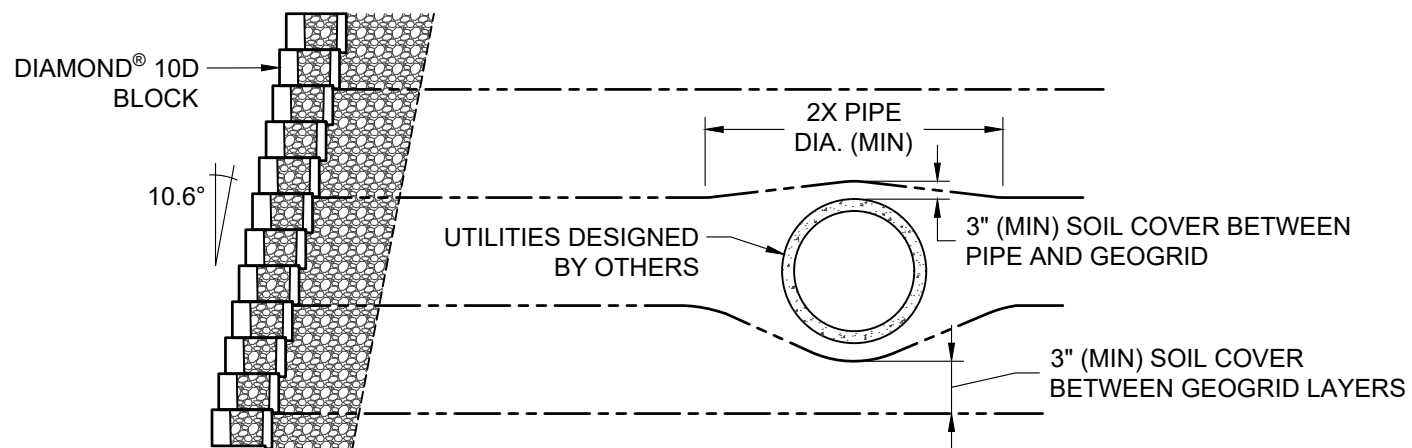
TYPICAL DRAIN PIPE THROUGH WALL FACE

Scale:
3/8" = 1'-0"

Drawn by:
MAH

Date:
10/29/2025

Drawing number:
D10D-17



This drawing is for illustrative purposes only and should not be used for construction without the signature of a registered professional engineer.

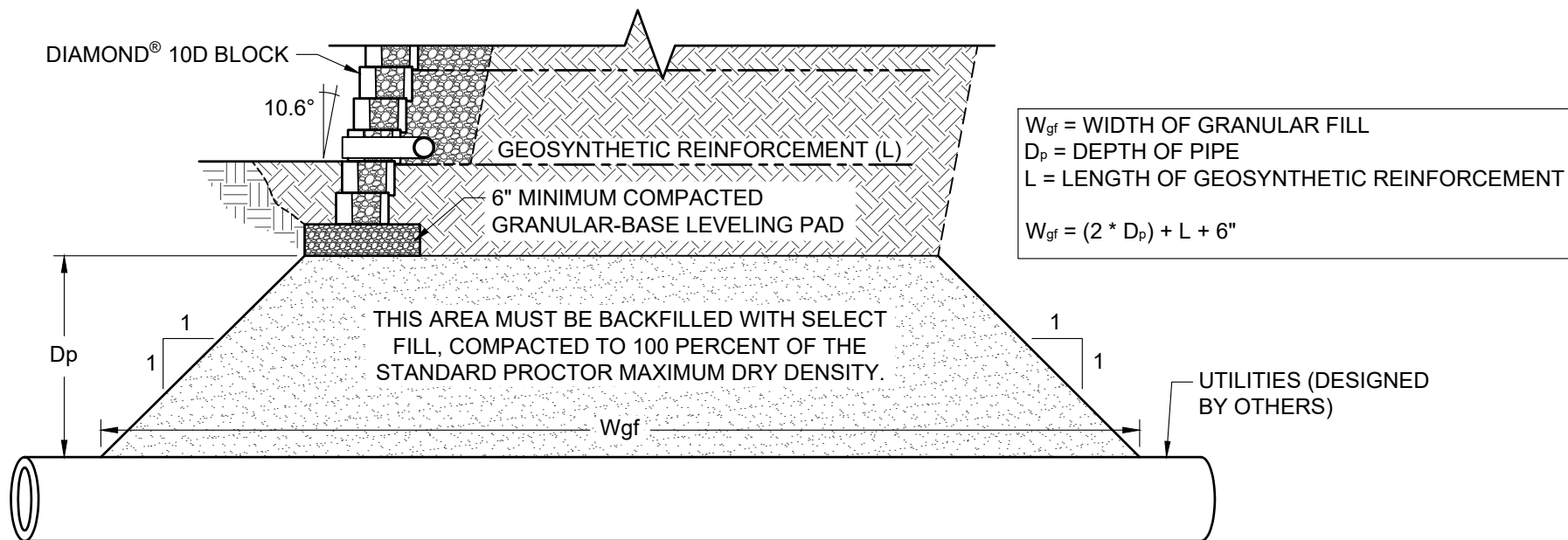
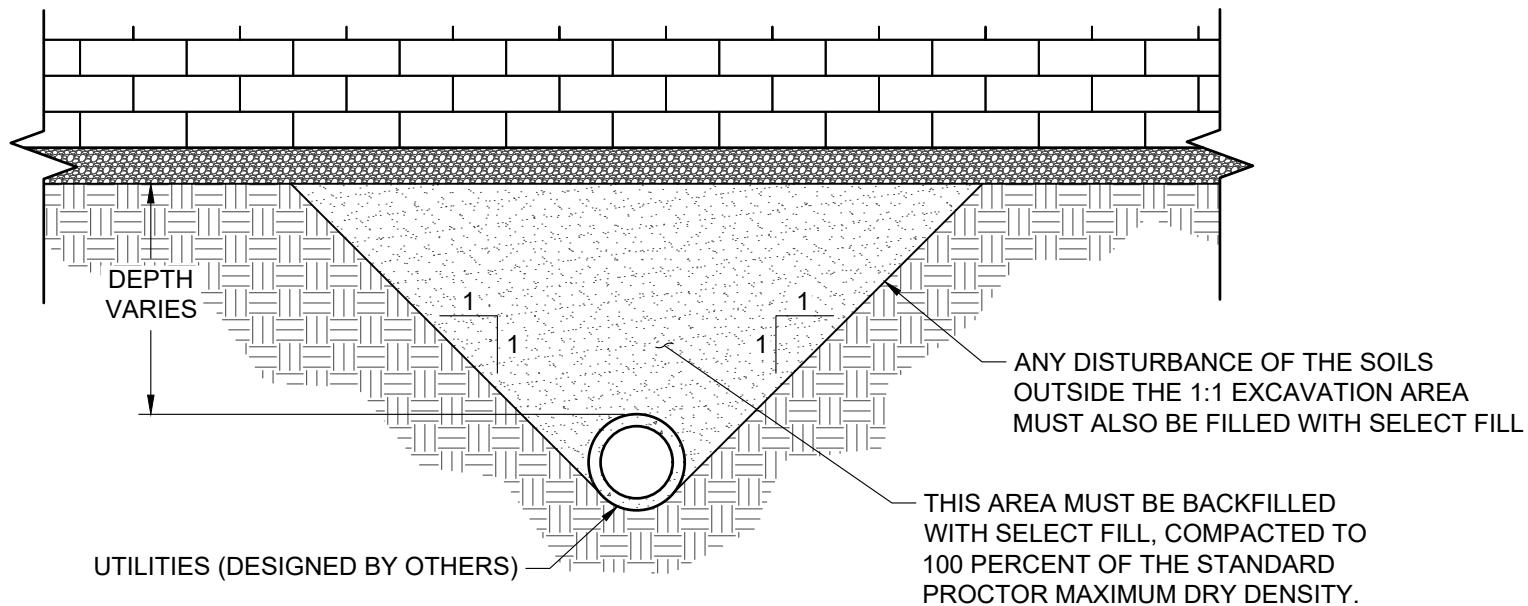
www.anchordiamond.com

© 2025 ANCHOR Engineering, LLC®
and © 2025 ANCHOR DIAMOND Group. All rights reserved

Diamond® 10D Retaining Wall System

TYPICAL CROSS SECTION WITH PARALLEL UTILITIES

Scale:	Drawn by:
3/8" = 1'-0"	MAH
Date:	Drawing number:
10/29/2025	D10D-19



**ANCHOR
DIAMOND**

This drawing is for illustrative purposes only and should not be used for construction without the signature of a registered professional engineer.

www.anchordiamond.com

© 2025 ANCHOR Engineering, LLC®
and © 2025 ANCHOR DIAMOND Group. All rights reserved

Diamond® 10D Retaining Wall System

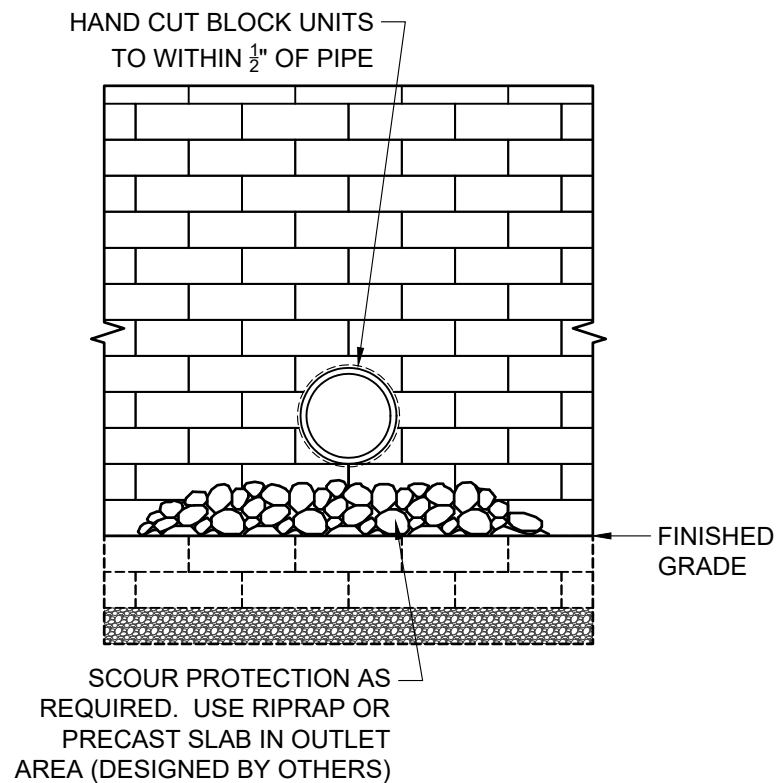
TYPICAL DETAILS FOR UTILITIES BELOW WALL

Scale:
3/8" = 1'-0"

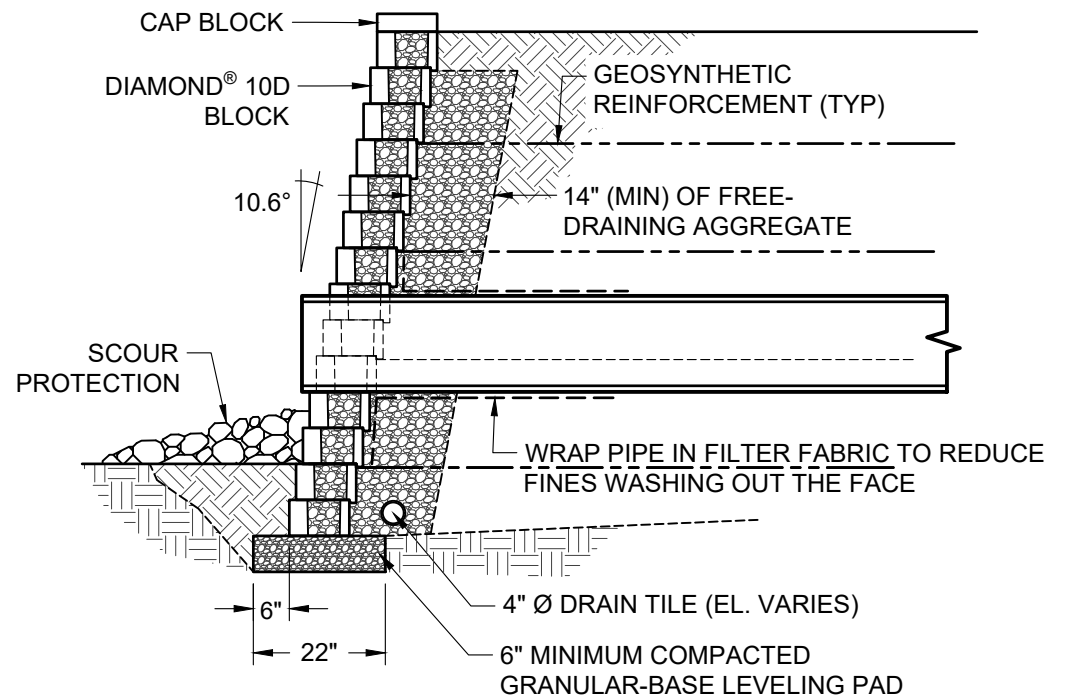
Drawn by:
MAH

Date:
10/29/2025

Drawing number:
D10D-20



FACE VIEW



SECTION VIEW



This drawing is for illustrative purposes only and should not be used for construction without the signature of a registered professional engineer.

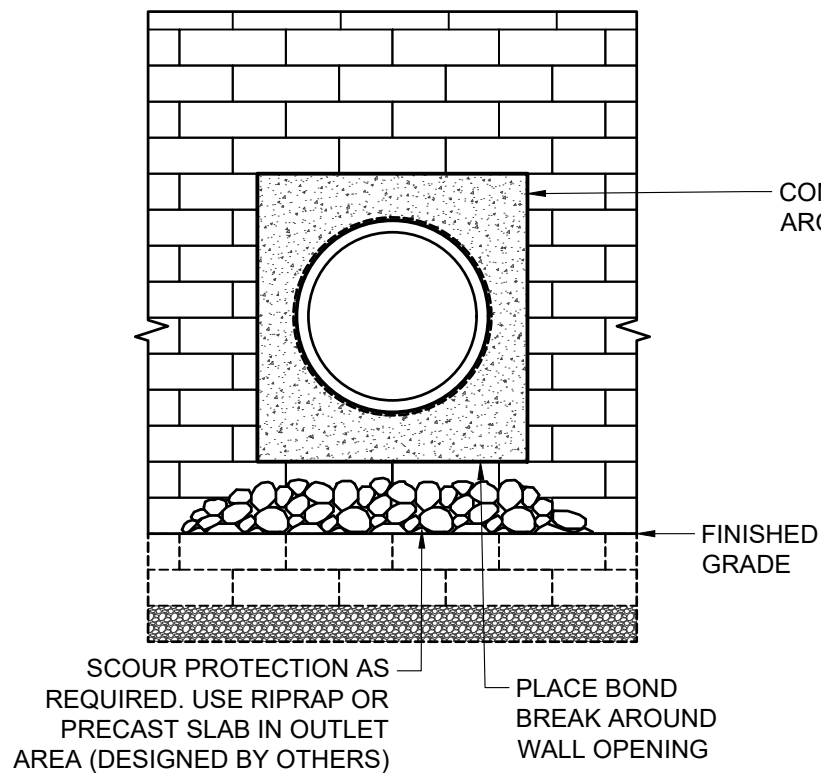
www.anchordiamond.com

© 2025 ANCHOR Engineering, LLC®
and © 2025 ANCHOR DIAMOND Group. All rights reserved

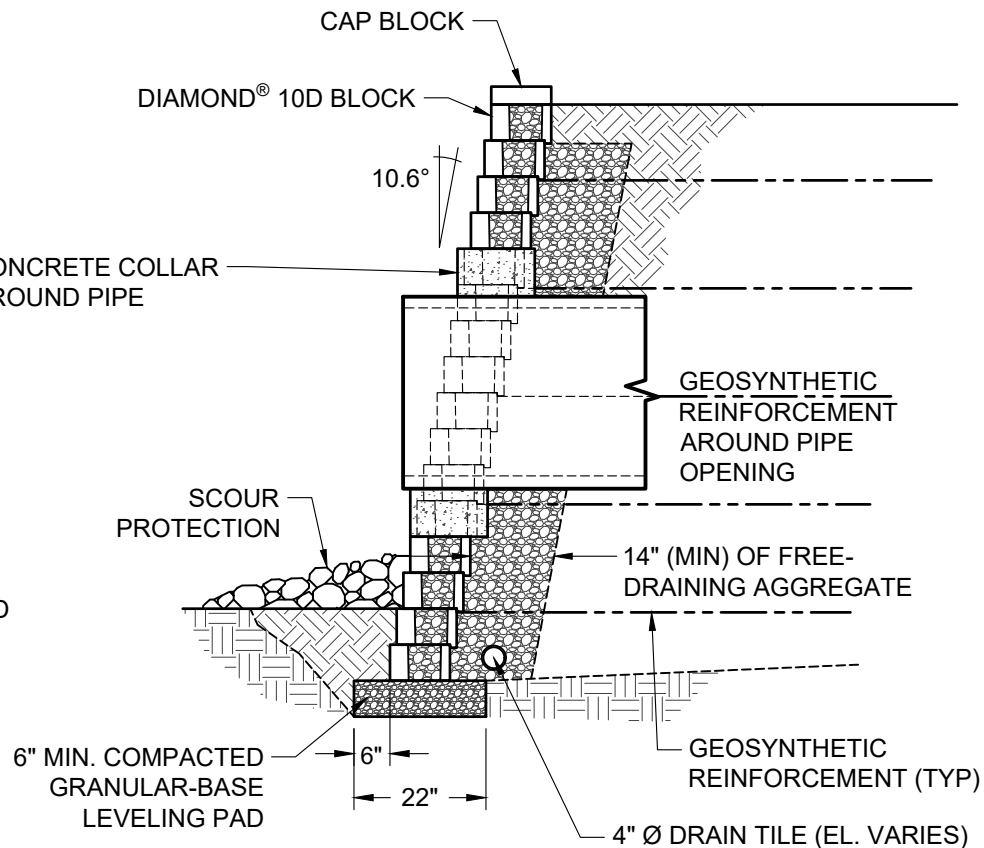
Diamond® 10D Retaining Wall System

TYPICAL DETAILS FOR SMALL UTILITIES THROUGH WALL

Scale:	3/8" = 1'-0"	Drawn by:	MAH
Date:	10/29/2025	Drawing number:	D10D-21



FACE VIEW



SECTION VIEW



ANCHOR
DIAMOND

This drawing is for illustrative purposes only and should not be used for construction without the signature of a registered professional engineer.

www.anchordiamond.com

© 2025 ANCHOR Engineering, LLC®
and © 2025 ANCHOR DIAMOND Group. All rights reserved

Diamond® 10D Retaining Wall System

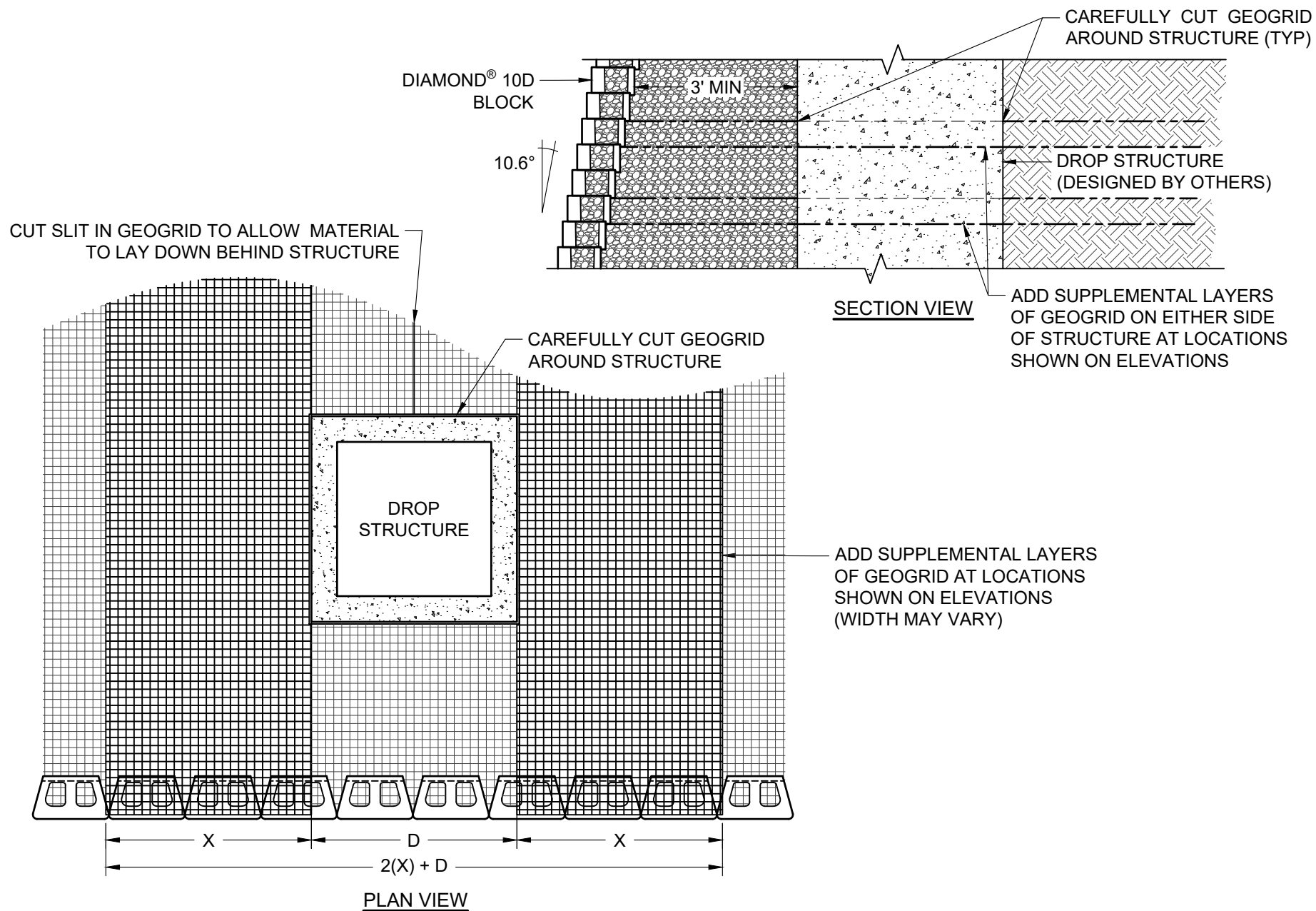
TYPICAL DETAILS FOR LARGE UTILITIES THROUGH WALL

Scale:
3/8" = 1'-0"

Drawn by:
MAH

Date:
10/29/2025

Drawing number:
D10D-22



ANCHOR
DIAMOND®

This drawing is for illustrative purposes only and should not be used for construction without the signature of a registered professional engineer.

www.anchordiamond.com

© 2025 ANCHOR Engineering, LLC®
and © 2025 ANCHOR DIAMOND Group. All rights reserved

Diamond® 10D Retaining Wall System

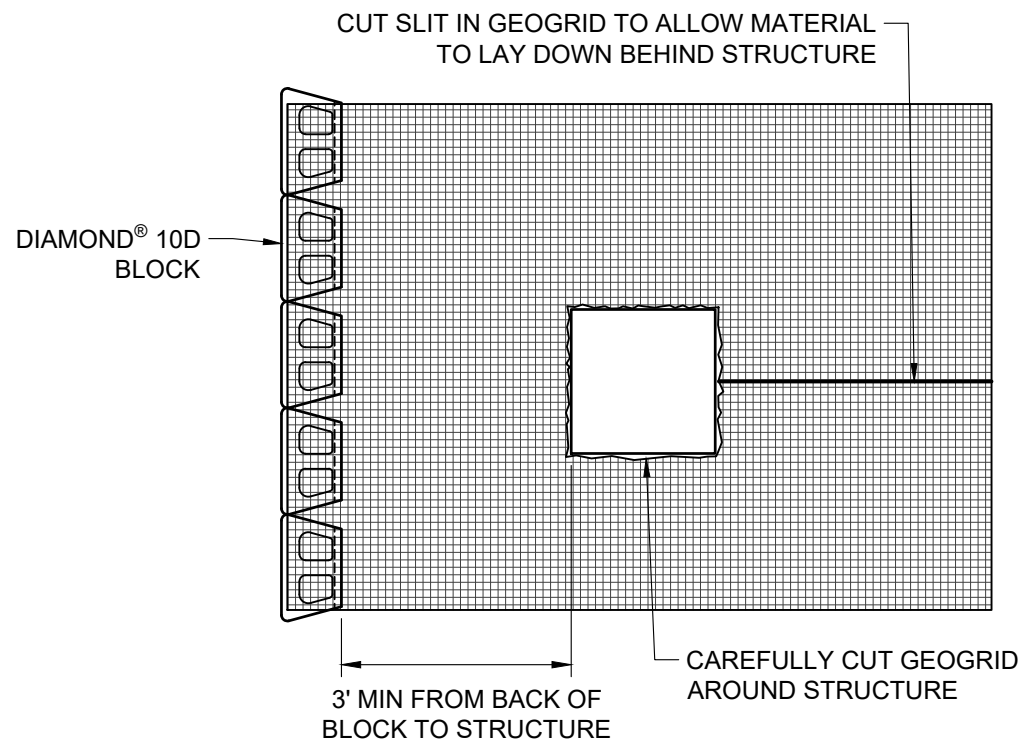
TYPICAL DETAILS DROP STRUCTURE BEHIND WALL

Scale:
3/8" = 1'-0"

Drawn by:
MAH

Date:
10/29/2025

Drawing number:
D10D-23



This drawing is for illustrative purposes only and should not be used for construction without the signature of a registered professional engineer.

www.anchordiamond.com

© 2025 ANCHOR Engineering, LLC®
and © 2025 ANCHOR DIAMOND Group. All rights reserved

Diamond® 10D Retaining Wall System

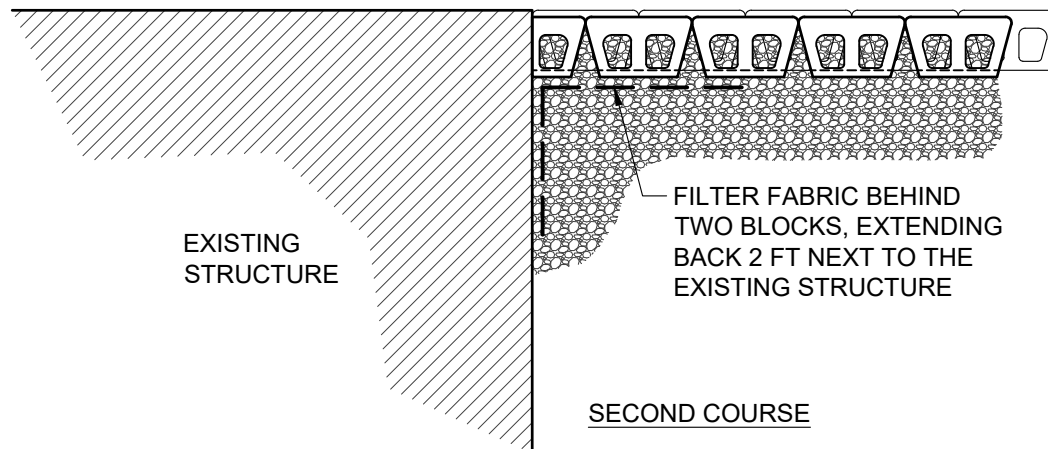
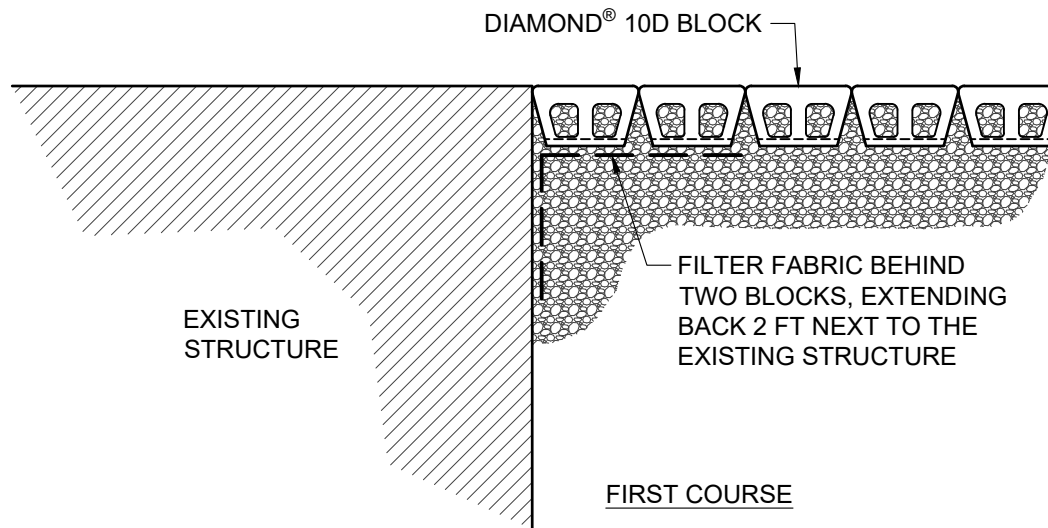
TYPICAL DETAIL ALTERNATE DROP STRUCTURE BEHIND WALL

Scale:
3/8" = 1'-0"

Drawn by:
MAH

Date:
10/29/2025

Drawing number:
D10D-24



ANCHOR
DIAMOND

This drawing is for illustrative purposes only and should not be used for construction without the signature of a registered professional engineer.

www.anchordiamond.com

© 2025 ANCHOR Engineering, LLC®
and © 2025 ANCHOR DIAMOND Group. All rights reserved

Diamond® 10D Retaining Wall System

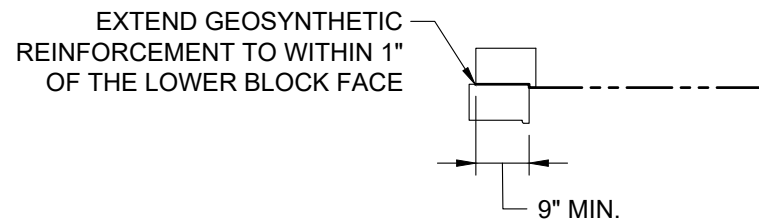
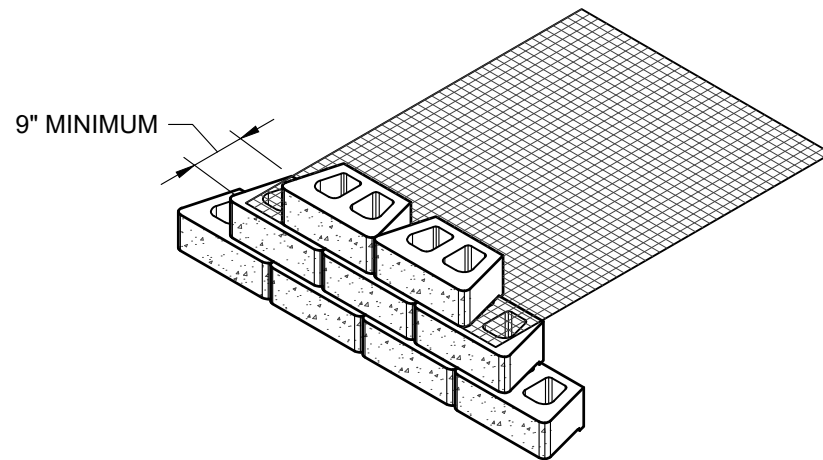
TYPICAL DETAIL WALL ABUTTING STRUCTURE

Scale:
3/8" = 1'-0"

Drawn by:
MAH

Date:
10/29/2025

Drawing number:
D10D-25



This drawing is for illustrative purposes only and should not be used for construction without the signature of a registered professional engineer.

www.anchordiamond.com

© 2025 ANCHOR Engineering, LLC®
and © 2025 ANCHOR DIAMOND Group. All rights reserved

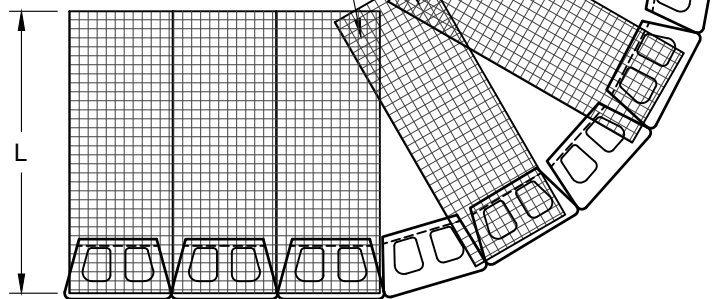
Diamond® 10D Retaining Wall System

TYPICAL REINFORCEMENT CONNECTION DETAIL

Scale:	NONE	Drawn by:	MAH
Date:	10/29/2025	Drawing number:	D10D-26

STEP 1 - PLACE REINFORCEMENT SO LITTLE OR NO OVERLAP OCCURS IN THE RADIUS AREA. IF OVERLAP OCCURS, PLACE 2 TO 3 INCHES OF SAND BETWEEN THE REINFORCEMENT LAYERS.

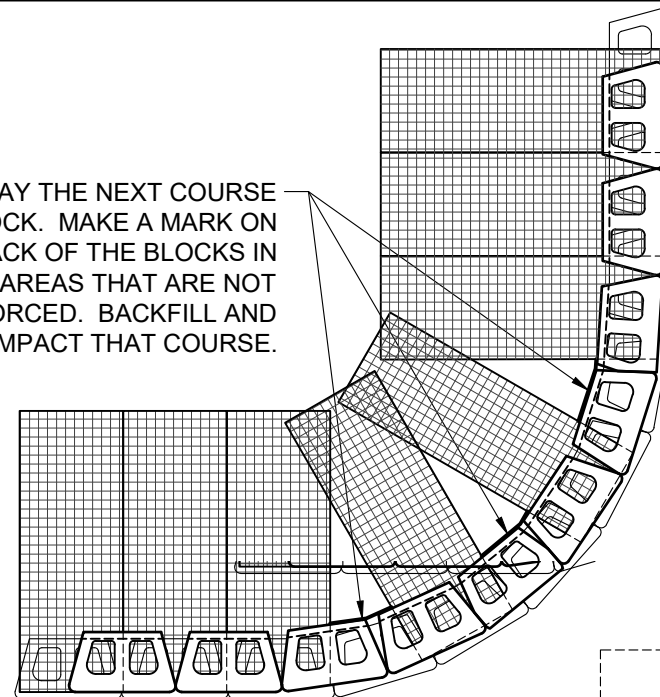
2"-3" OF SOIL FILL REQUIRED BETWEEN OVERLAPPED REINFORCEMENT FOR PROPER SOIL AND REINFORCEMENT INTERACTION



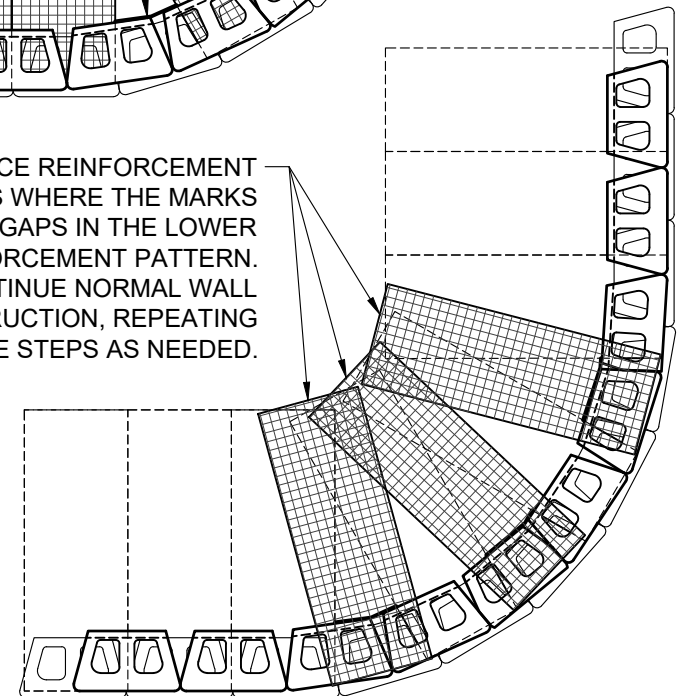
MINIMUM RADIUS - 4 FT. TO BACK OF BLOCK AT TOP COURSE

PRINCIPLE REINFORCEMENT DIRECTION

STEP 2: LAY THE NEXT COURSE OF BLOCK. MAKE A MARK ON THE BACK OF THE BLOCKS IN THE AREAS THAT ARE NOT REINFORCED. BACKFILL AND COMPACT THAT COURSE.



STEP 3: PLACE REINFORCEMENT IN THE AREAS WHERE THE MARKS SHOW GAPS IN THE LOWER REINFORCEMENT PATTERN. CONTINUE NORMAL WALL CONSTRUCTION, REPEATING THESE STEPS AS NEEDED.



ANCHOR
DIAMOND

This drawing is for illustrative purposes only and should not be used for construction without the signature of a registered professional engineer.

www.anchordiamond.com

© 2025 ANCHOR Engineering, LLC®
and © 2025 ANCHOR DIAMOND Group. All rights reserved

Diamond® 10D Retaining Wall System

TYPICAL DETAIL OUTSIDE CURVES

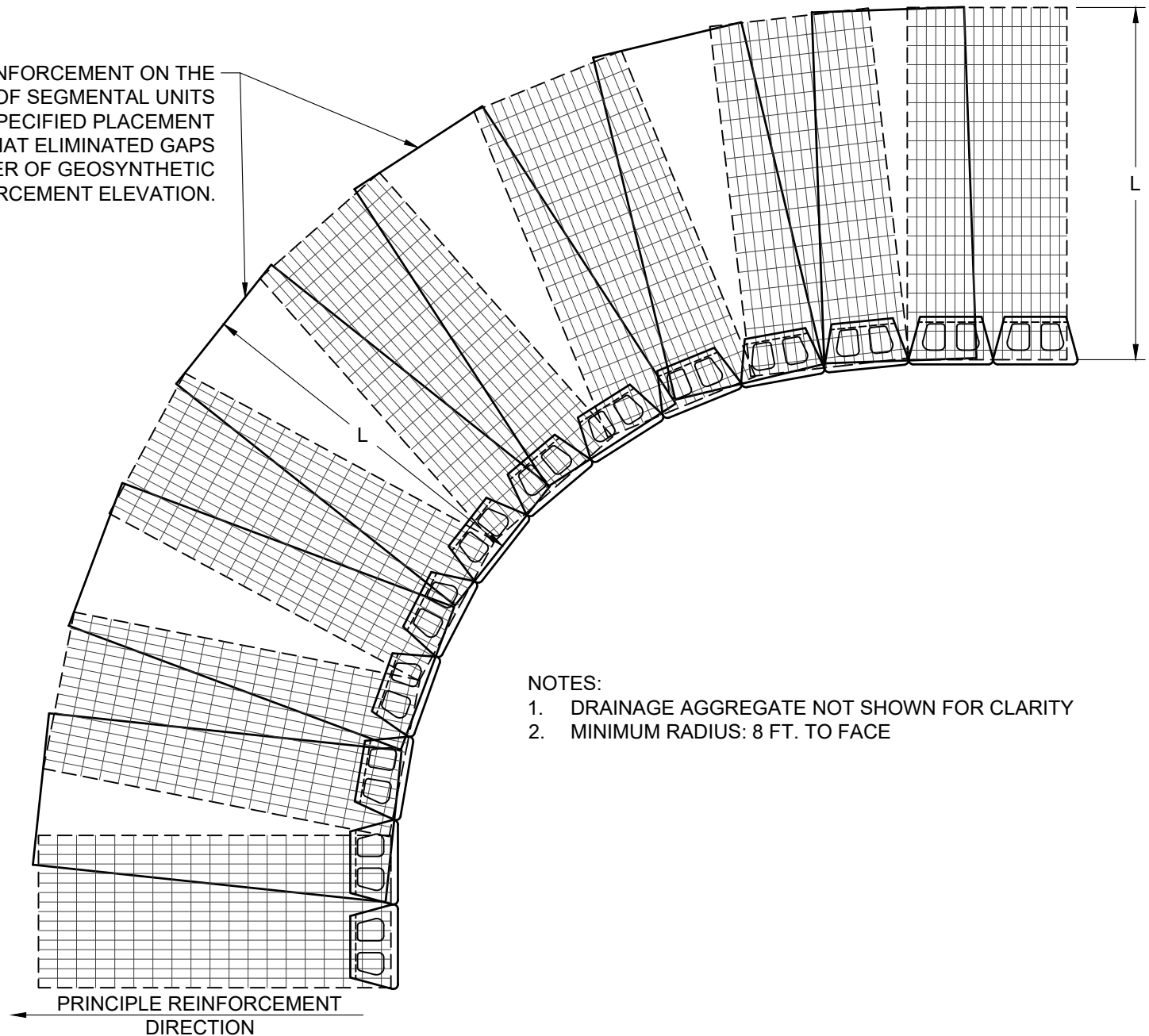
Scale:
3/8" = 1'-0"

Drawn by:
MAH

Date:
10/29/2025

Drawing number:
D10D-27

PLACE ADDITIONAL REINFORCEMENT ON THE
NEXT COURSE OF SEGMENTAL UNITS
IMMEDIATELY ABOVE THE SPECIFIED PLACEMENT
ELEVATION IN A MANNER THAT ELIMINATED GAPS
LEFT BY THE PREVIOUS LAYER OF GEOSYNTHETIC
AT THE SPECIFIED REINFORCEMENT ELEVATION.



NOTES:

1. DRAINAGE AGGREGATE NOT SHOWN FOR CLARITY
2. MINIMUM RADIUS: 8 FT. TO FACE



This drawing is for illustrative purposes only and should not be used for construction without the signature of a registered professional engineer.

www.anchordiamond.com

© 2025 ANCHOR Engineering, LLC®
and © 2025 ANCHOR DIAMOND Group. All rights reserved

Diamond® 10D Retaining Wall System

TYPICAL DETAIL INSIDE CURVES

Scale:
3/8" = 1'-0"

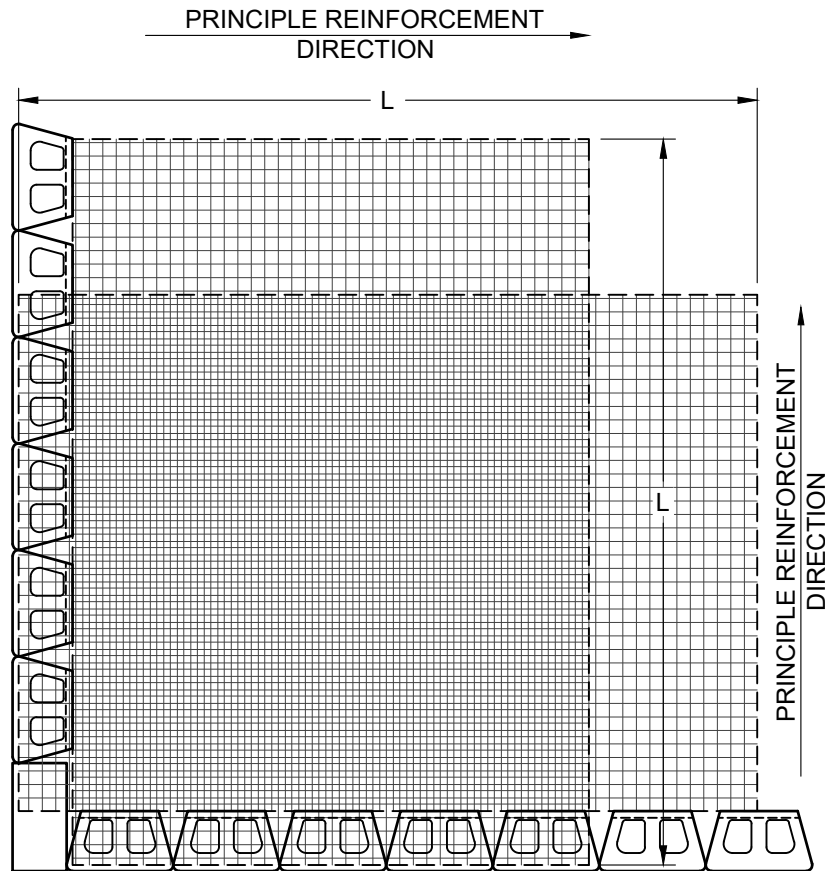
Drawn by:
MAH

Date:
10/29/2025

Drawing number:
D10D-28

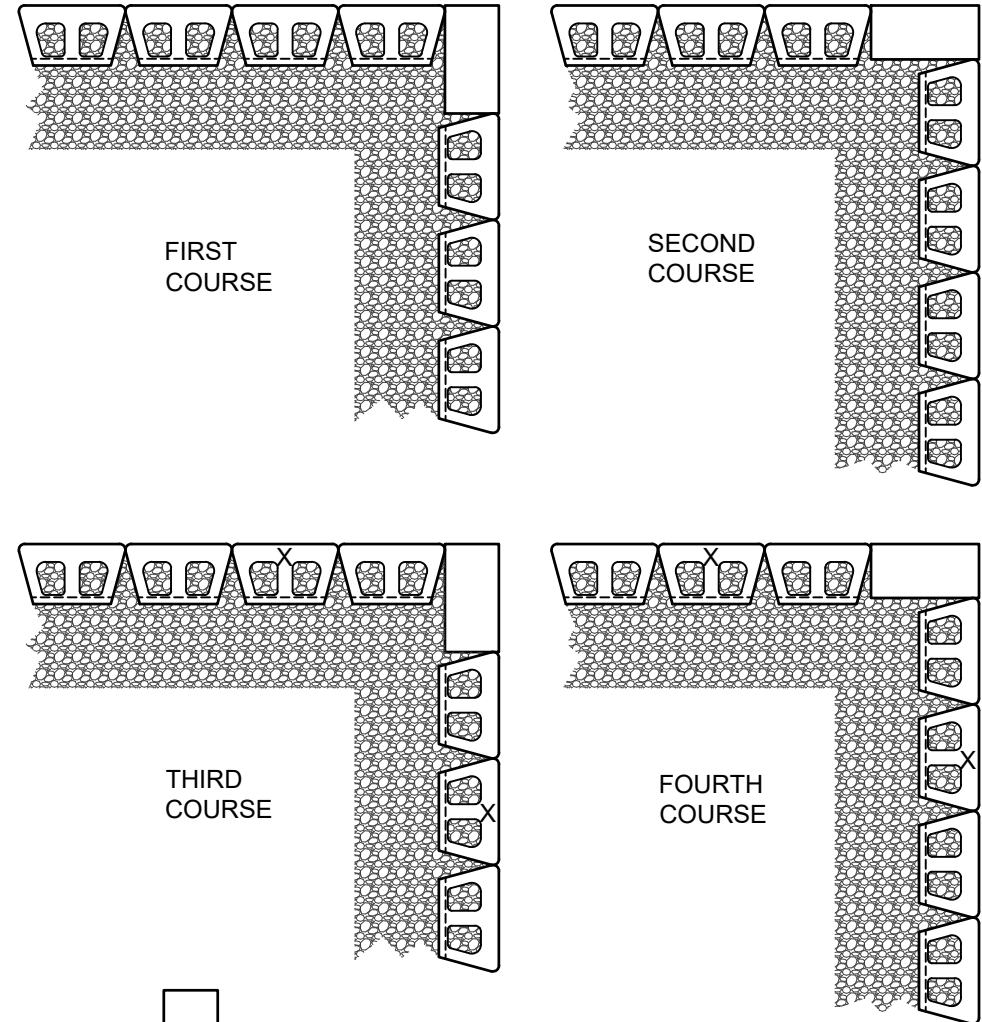
NOTE:

IN THE "CROSS-OVER AREA" OF REINFORCEMENT, ONE OF THE LAYERS OF REINFORCEMENT SHOULD BE LOWERED OR RAISED ONE COURSE TO ALLOW PLACEMENT OF THE REINFORCEMENT WITH THE PRINCIPLE REINFORCEMENT STRENGTH DIRECTION PROPERLY ORIENTATED. THE REINFORCEMENT SHOULD NOT EXTEND INTO THE SEGMENTAL RETAINING WALL UNITS ON THE RETURN LEG OF THE 90-DEGREE CORNER.



GEOGRID LAYOUT

NOTE: USE ADHESIVE ON EXPOSED PARTIAL UNITS
CUT UNITS (X) TO MAINTAIN RUNNING BOND



BLOCK LAYOUT



This drawing is for illustrative purposes only and should not be used for construction without the signature of a registered professional engineer.

www.anchordiamond.com

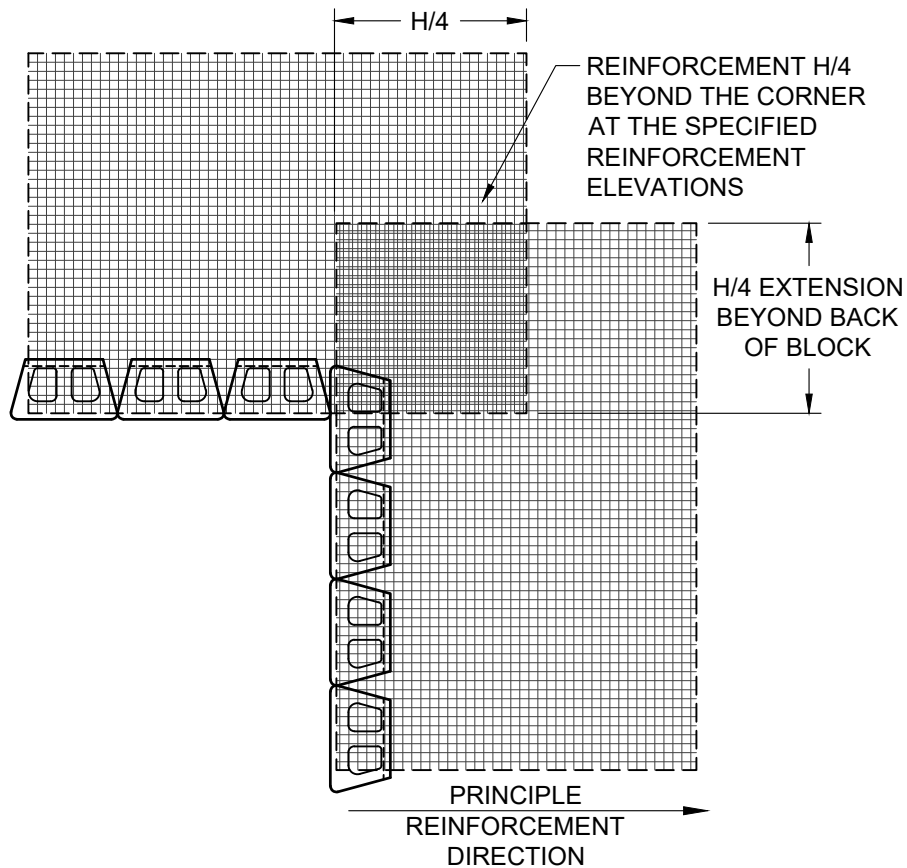
© 2025 ANCHOR Engineering, LLC®
and © 2025 ANCHOR DIAMOND Group. All rights reserved

Diamond® 10D Retaining Wall System

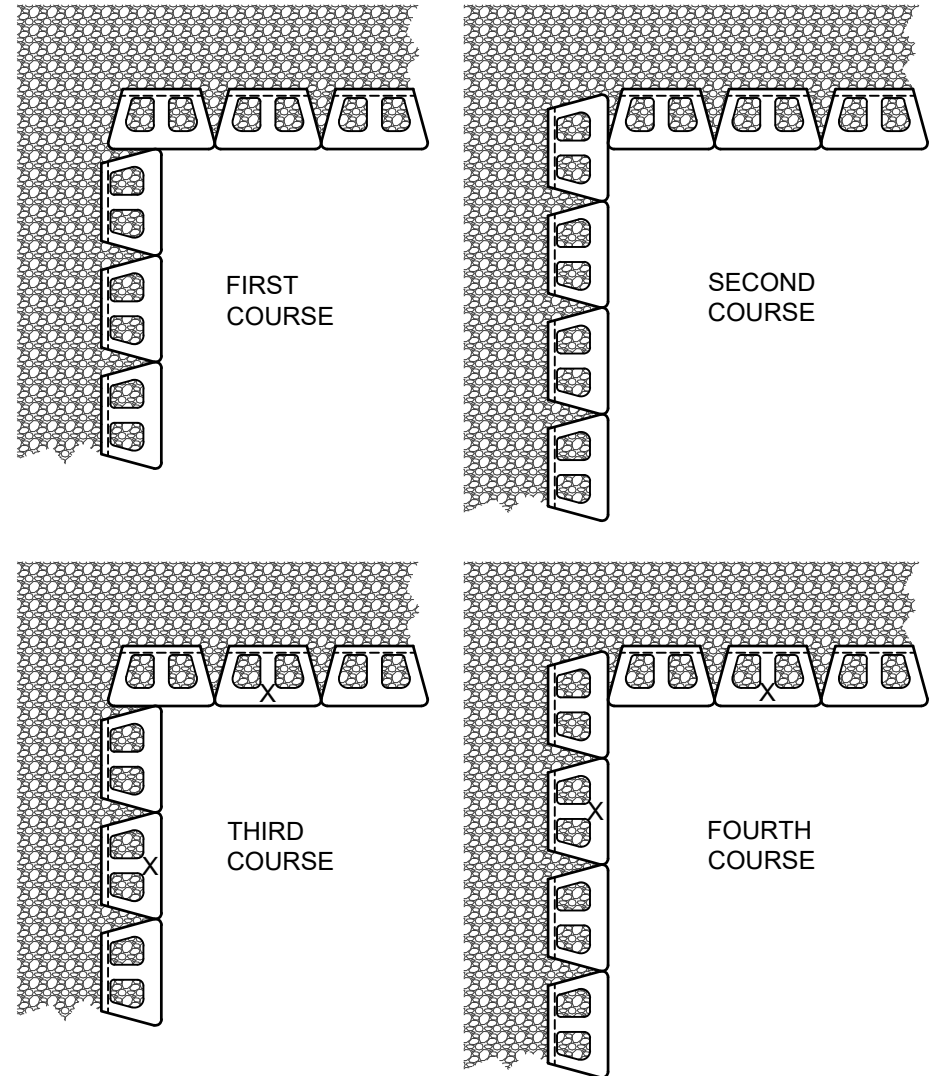
TYPICAL DETAIL OUTSIDE CORNERS

Scale:	Drawn by:
3/8" = 1'-0"	MAH
Date:	Drawing number:
10/29/2025	D10D-29

NOTE: USE ADHESIVE ON EXPOSED PARTIAL UNITS
CUT UNITS (X) TO MAINTAIN RUNNING BOND



GEOGRID LAYOUT



BLOCK LAYOUT



This drawing is for illustrative purposes only and should not be used for construction without the signature of a registered professional engineer.

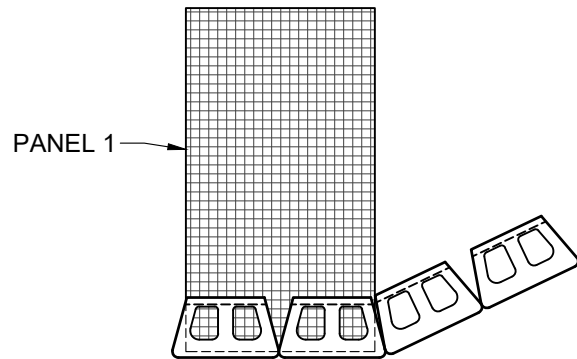
www.anchordiamond.com

© 2025 ANCHOR Engineering, LLC®
and © 2025 ANCHOR DIAMOND Group. All rights reserved

Diamond® 10D Retaining Wall System

TYPICAL DETAIL INSIDE CORNERS

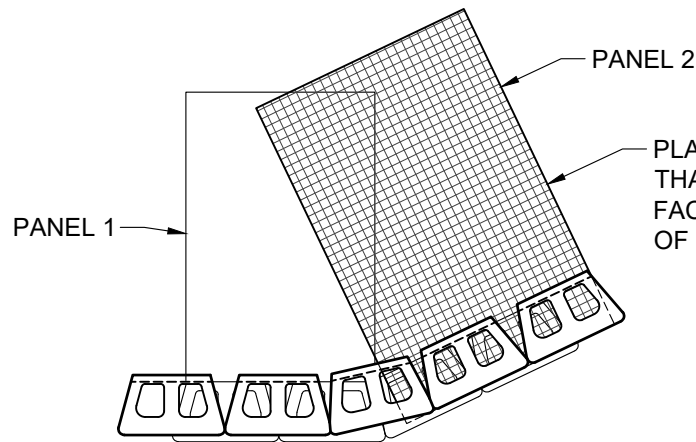
Scale:	Drawn by:
3/8" = 1'-0"	MAH
Date:	Drawing number:
10/29/2025	D10D-30



COURSE A

NOTES:

1. ALTERNATE COURSES "A" & "B" AS NEEDED TO FULL HEIGHT OF WALL.
2. MODIFY UNITS AS NEEDED TO MAINTAIN RUNNING BOND.
3. ADHERE ALL PARTIAL UNITS WITH CONSTRUCTION GRADE ADHESIVE.
4. ADJUST PLACEMENT IN FIELD TO ACHIEVE DESIRED ANGLE.
5. FREE-DRAINING AGGREGATE (NOT SHOWN) TO SPAN 10 FT. ALONG THE WALL FACE AND TO THE BACK OF THE REINFORCED ZONE.



COURSE B

PLACE GEOGRID REINFORCEMENT SUCH THAT ITS ALIGNMENT IS PERPENDICULAR TO FACE OF WALL AND THAT 100% COVERAGE OF REINFORCED FILL IS PROVIDED.



This drawing is for illustrative purposes only and should not be used for construction without the signature of a registered professional engineer.

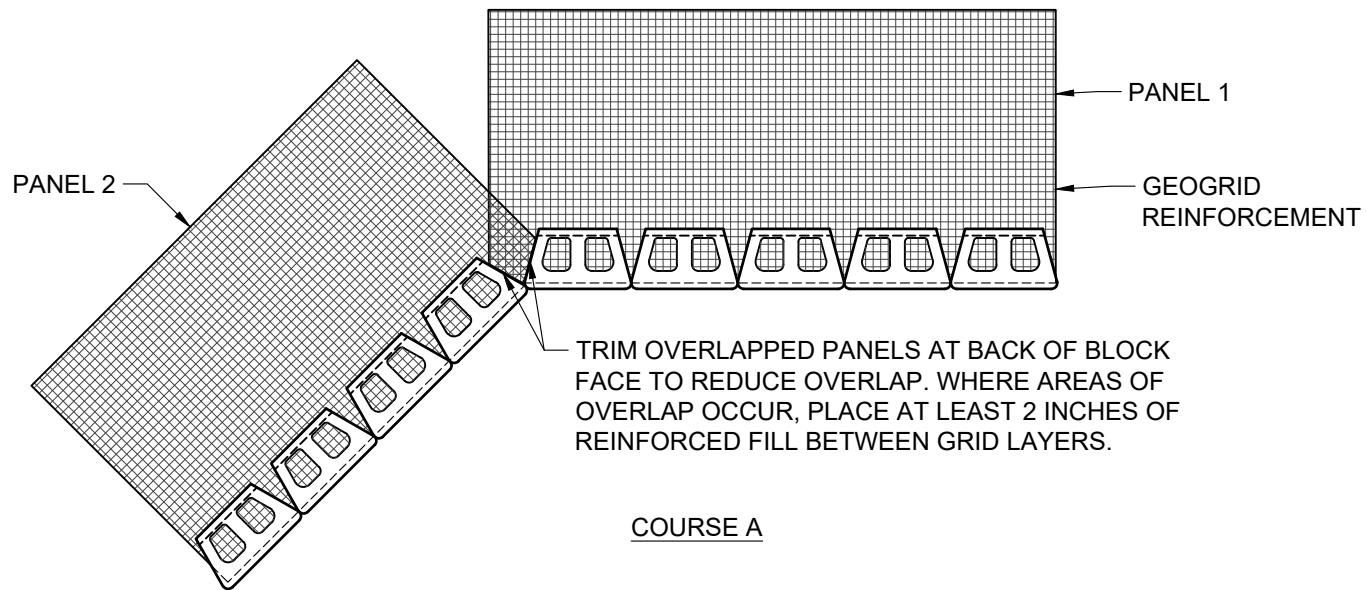
www.anchordiamond.com

© 2025 ANCHOR Engineering, LLC®
and © 2025 ANCHOR DIAMOND Group. All rights reserved

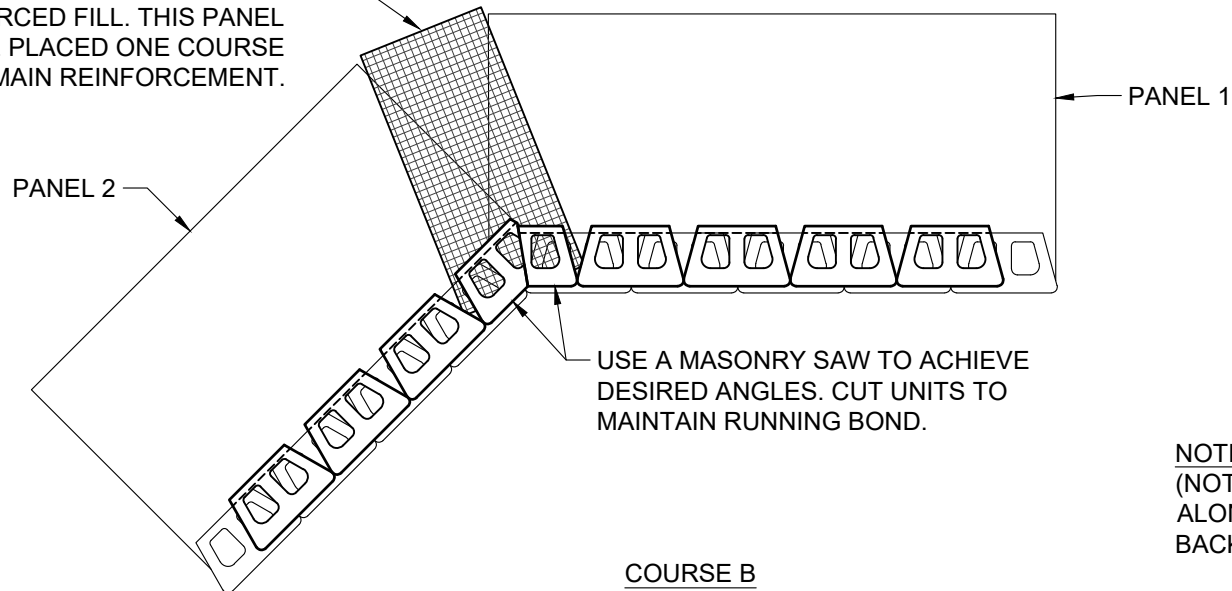
Diamond® 10D Retaining Wall System

TYPICAL DETAIL OUTSIDE ANGLED CORNERS

Scale:	Drawn by:
3/8" = 1'-0"	MAH
Date:	Drawing number:
10/29/2025	D10D-31



PLACE ADDITIONAL PANEL AT CORNER TO PROVIDE 100% GEOGRID COVERAGE OF REINFORCED FILL. THIS PANEL SHOULD BE PLACED ONE COURSE ABOVE MAIN REINFORCEMENT.



NOTE: FREE-DRAINING AGGREGATE (NOT SHOWN) TO SPAN 10 FT. ALONG THE WALL FACE AND TO THE BACK OF THE REINFORCED ZONE



This drawing is for illustrative purposes only and should not be used for construction without the signature of a registered professional engineer.

www.anchordiamond.com

© 2025 ANCHOR Engineering, LLC®
and © 2025 ANCHOR DIAMOND Group. All rights reserved

Diamond® 10D Retaining Wall System

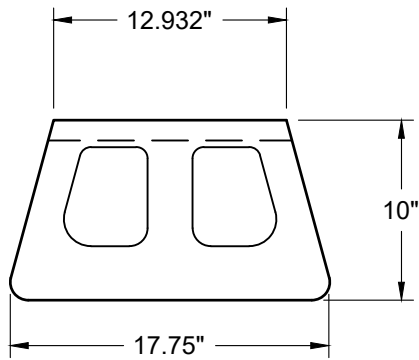
TYPICAL DETAIL INSIDE ANGLED CORNERS

Scale:
3/8" = 1'-0"

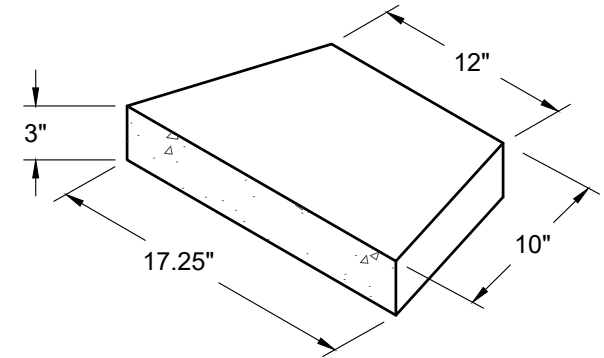
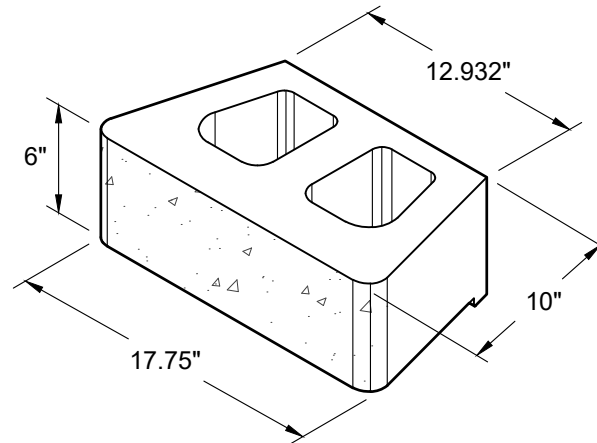
Drawn by:
MAH

Date:
10/29/2025

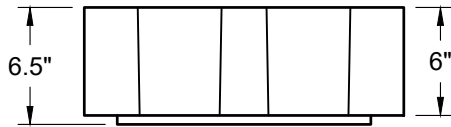
Drawing number:
D10D-32



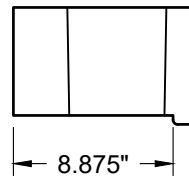
TOP VIEW



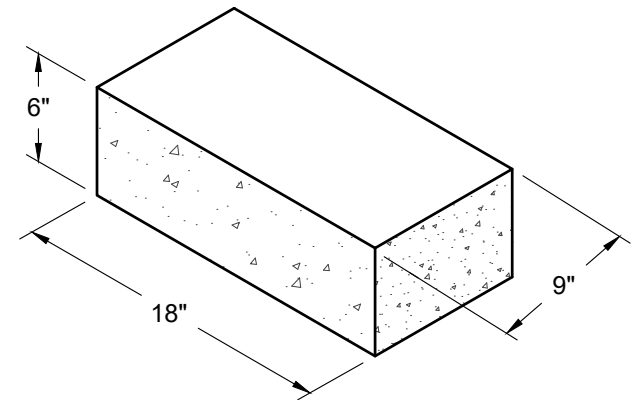
CAP UNIT



FRONT VIEW



SIDE VIEW



CORNER UNIT



This drawing is for illustrative purposes only and should not be used for construction without the signature of a registered professional engineer.

www.anchordiamond.com

© 2025 ANCHOR Engineering, LLC®
and © 2025 ANCHOR DIAMOND Group. All rights reserved

Diamond® 10D Retaining Wall System

INDIVIDUAL BLOCK DETAILS - STRAIGHT FACE

Scale:	NONE	Drawn by:	MAH
Date:	10/29/2025	Drawing number:	D10D-34