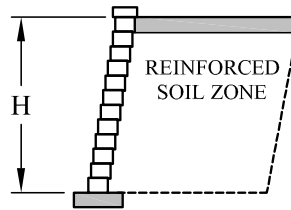


Diamond® 9D Retaining Wall System

Estimating Chart for Geosynthetic Reinforcement

No Slopes and No Surcharges

FOR ESTIMATING PURPOSES ONLY - NOT FOR CONSTRUCTION



	CLAY & SILT SOIL	SILTY / CLAYEY SAND SOIL	CLEAN SAND & GRAVEL SOIL
H	$\phi = 26^\circ$ $\gamma = 120 \text{ pcf } (19 \text{ kN/m}^3)$	$\phi = 30^\circ$ $\gamma = 120 \text{ pcf } (19 \text{ kN/m}^3)$	$\phi = 34^\circ$ $\gamma = 120 \text{ pcf } (19 \text{ kN/m}^3)$
4'-0" (1200 mm) 6 Courses			
6'-0" (1800 mm) 9 Courses			
8'-0" (2400 mm) 12 Courses			

© 2022 ANCHOR Diamond® retaining wall systems are manufactured under license from ANCHOR Diamond®. The wall system blocks are covered by the Anchor Diamond® Limited Warranty. For a complete copy, visit your local dealer or see anchordiamond.com. All rights reserved.

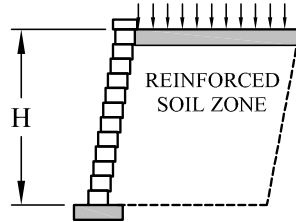
Anchor Diamond®
 5909 Baker Rd. Suite 550 • Minnetonka, MN 55345
 AWS22-253 10/22

Diamond® 9D Retaining Wall System

Estimating Chart for Geosynthetic Reinforcement

250 PSF Surcharge

FOR ESTIMATING PURPOSES ONLY - NOT FOR CONSTRUCTION



	CLAY & SILT SOIL	SILTY / CLAYEY SAND SOIL	CLEAN SAND & GRAVEL SOIL
H	$\phi = 26^\circ$ $\gamma = 120 \text{ pcf (19 kN/m}^3\text{)}$	$\phi = 30^\circ$ $\gamma = 120 \text{ pcf (19 kN/m}^3\text{)}$	$\phi = 34^\circ$ $\gamma = 120 \text{ pcf (19 kN/m}^3\text{)}$
4'-0" (1200 mm) 6 Courses			
6'-0" (1800 mm) 9 Courses			
8'-0" (2400 mm) 12 Courses			

© 2022 ANCHOR Diamond® retaining wall systems are manufactured under license from ANCHOR Diamond®. The wall system blocks are covered by the Anchor Diamond® Limited Warranty. For a complete copy, visit your local dealer or see anchordiamond.com. All rights reserved.

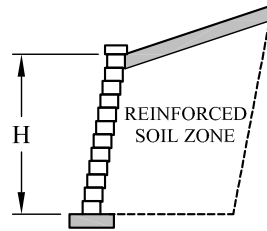
Anchor Diamond®
5909 Baker Rd. Suite 550 • Minnetonka, MN 55345
AWS22-253 10/22

Diamond® 9D Retaining Wall System

Estimating Chart for Geosynthetic Reinforcement

3:1 Crest Slope

FOR ESTIMATING PURPOSES ONLY - NOT FOR CONSTRUCTION



	CLAY & SILT SOIL	SILTY / CLAYEY SAND SOIL	CLEAN SAND & GRAVEL SOIL
H	$\phi = 26^\circ$ $\gamma = 120 \text{ pcf (19 kN/m}^3\text{)}$	$\phi = 30^\circ$ $\gamma = 120 \text{ pcf (19 kN/m}^3\text{)}$	$\phi = 34^\circ$ $\gamma = 120 \text{ pcf (19 kN/m}^3\text{)}$
4'-0" (1200 mm) 6 Courses			
6'-0" (1800 mm) 9 Courses			
8'-0" (2400 mm) 12 Courses			

© 2022 ANCHOR Diamond® retaining wall systems are manufactured under license from ANCHOR Diamond®. The wall system blocks are covered by the Anchor Diamond® Limited Warranty. For a complete copy, visit your local dealer or see anchordiamond.com. All rights reserved.

Anchor Diamond®
5909 Baker Rd. Suite 550 • Minnetonka, MN 55345
AWS22-253 10/22