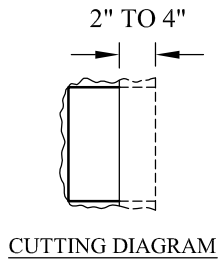
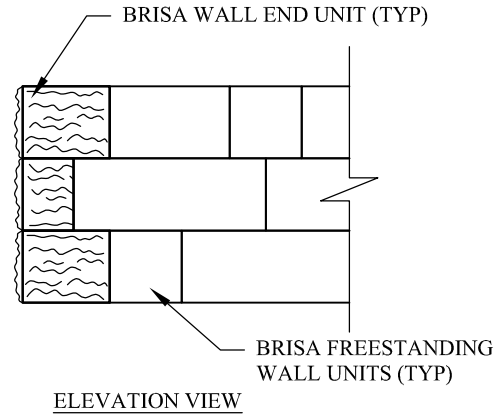


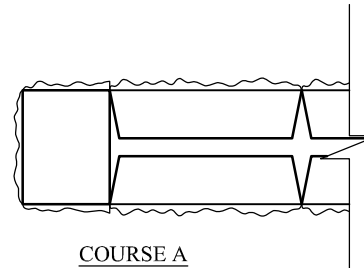
ISOMETRIC VIEW



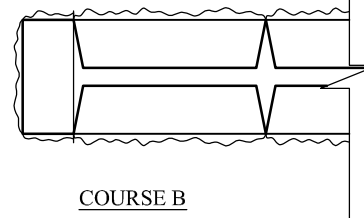
CUTTING DIAGRAM



ELEVATION VIEW



COURSE A



COURSE B

PLAN VIEW

NOTES:

1. ALTERNATE COURSES A AND B UNTIL FULL HEIGHT OF WALL HAS BEEN REACHED
2. CUT 2 TO 4 INCHES FROM CENTER END-UNIT TO MAINTAIN PATTERN
3. AFFIX ALL UNITS WITH CONSTRUCTION-GRADE ADHESIVE



Anchor Wall Systems, Inc.  
5959 Baker Road, Suite 390  
Minnetonka, MN 55345

© 2013 Anchor Wall Systems, Inc.  
® and ™ Anchor Wall Systems, Inc.

Drawn By: SB  
Date: 11/26/2013  
Scale: 1/2" = 1'-0"

Drawing Title:  
Brisa® 6" and Brisas® Random Freestanding Wall Systems  
End of Wall Without Column -- Wall End Unit

Typical Details For  
Segmental Freestanding Walls