

1. ALWAYS START CAPPING WALL FROM THE LOWEST ELEVATION
2. CUT CAPS TO FIT. OCCASIONAL CUTTING WILL BE NECESSARY FOR RADII OTHER THAN APPROXIMATELY 7.25 FEET
3. ALTERNATE SHORT AND LONG CAP FACES EVERY OTHER CAP TO ACHIEVE A STRAIGHT ROW OF CAPS
4. USE EXTERIOR-GRADE CONSTRUCTION ADHESIVE TO SECURE CAPS
5. LAY OUT CAPS PRIOR TO USING ADHESIVE



This drawing is for illustrative purposes only and should not be used for construction without the signature of a registered professional engineer.

www.anchordiamond.com

© 2024 ANCHOR Engineering, LLC® and © 2024 ANCHOR DIAMOND®

Bayfield[®] Retaining Wall System

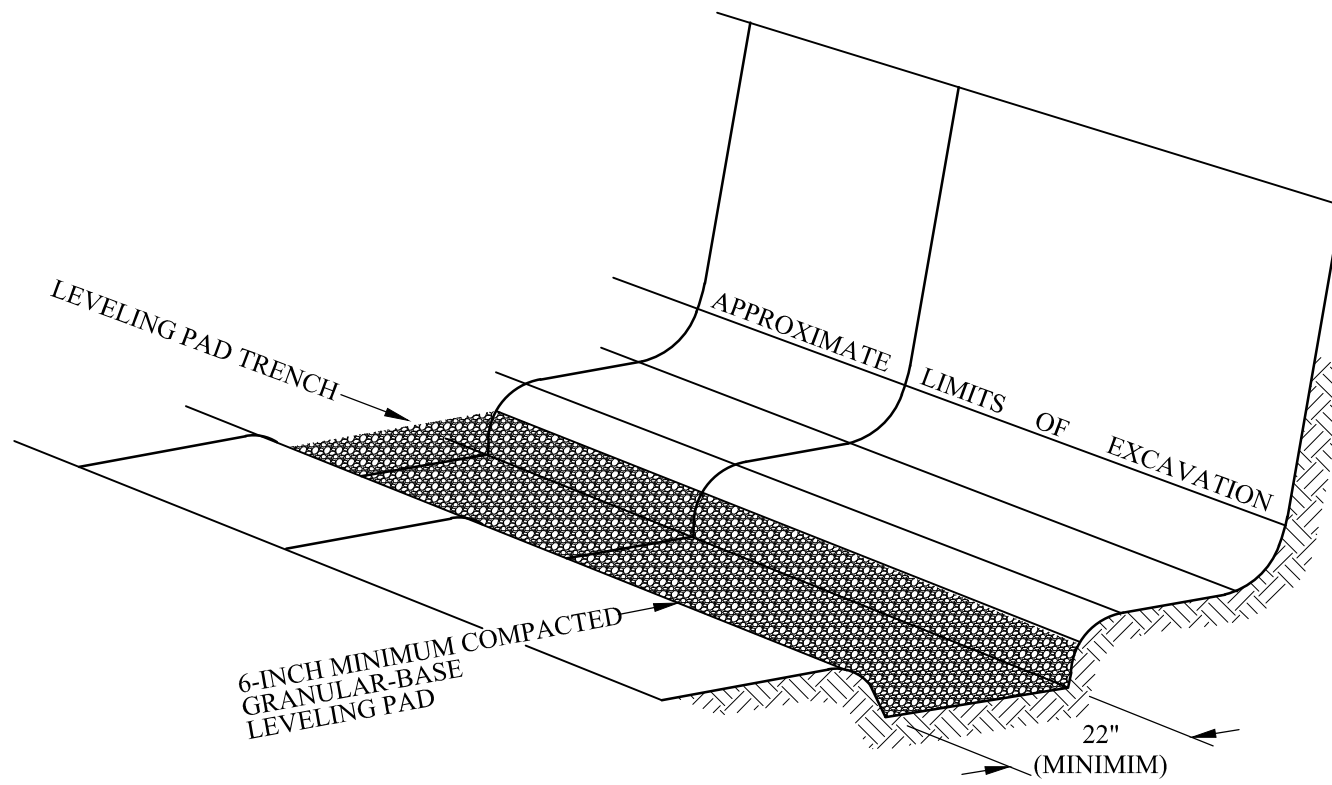
Typical Capping

Scale:
1/2" - 1'-0"

Drawn By:
AWE

Date:
3/1/2012

Drawing Number:
BFMP01



This drawing is for illustrative purposes only and should not be used for construction without the signature of a registered professional engineer.

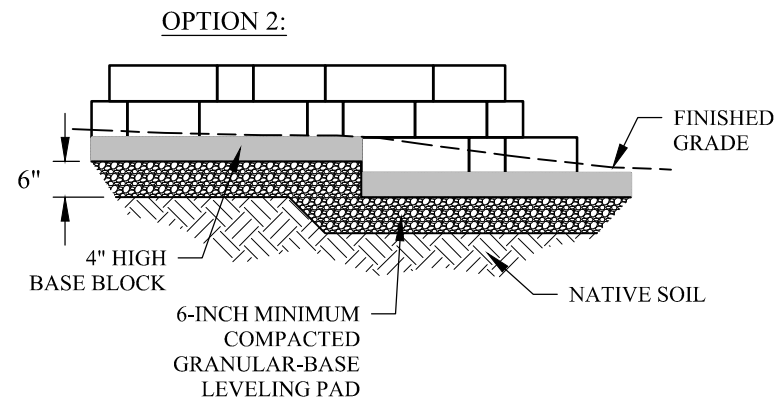
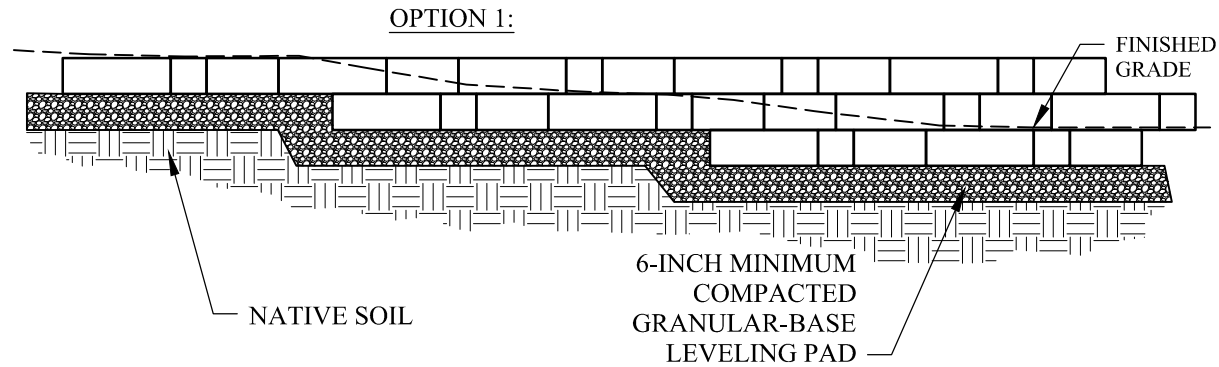
www.anchordiamond.com

© 2024 ANCHOR Engineering, LLC® and © 2024 ANCHOR DIAMOND®

Bayfield[®] Retaining Wall System

Typical Base Preparation

Scale:	Drawn By:
None	AWE
Date:	Drawing Number:
3/1/2012	BFMP02



This drawing is for illustrative purposes only and should not be used for construction without the signature of a registered professional engineer.

www.anchordiamond.com

© 2024 ANCHOR Engineering, LLC® and © 2024 ANCHOR DIAMOND®

Bayfield® Retaining Wall System

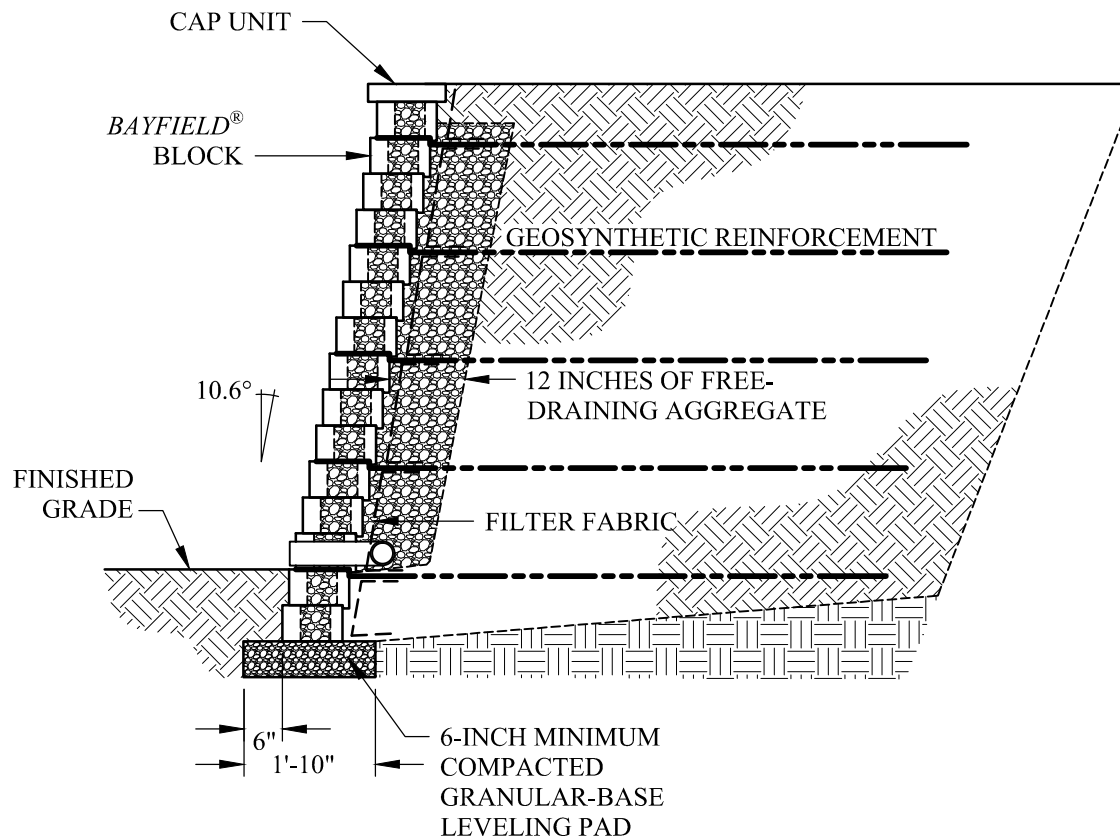
Typical Base Set-Up

Scale:
3/8" = 1'-0"

Drawn By:
AWE

Date:
3/2/2012

Drawing Number:
BFMP03



This drawing is for illustrative purposes only and should not be used for construction without the signature of a registered professional engineer.

www.anchordiamond.com

© 2024 ANCHOR Engineering, LLC® and © 2024 ANCHOR DIAMOND®

Bayfield® Retaining Wall System

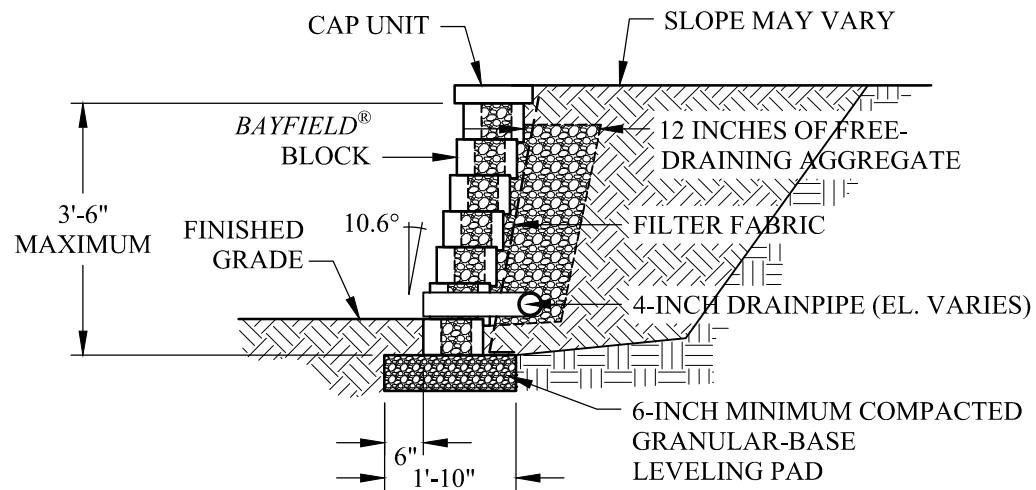
Typical Reinforced Cross Section

Scale:
3/8" - 1'-0"

Drawn By:
AWE

Date:
3/1/2012

Drawing Number:
BFMP04



This drawing is for illustrative purposes only and should not be used for construction without the signature of a registered professional engineer.

www.anchordiamond.com

© 2024 ANCHOR Engineering, LLC® and © 2024 ANCHOR DIAMOND®

Bayfield® Retaining Wall System

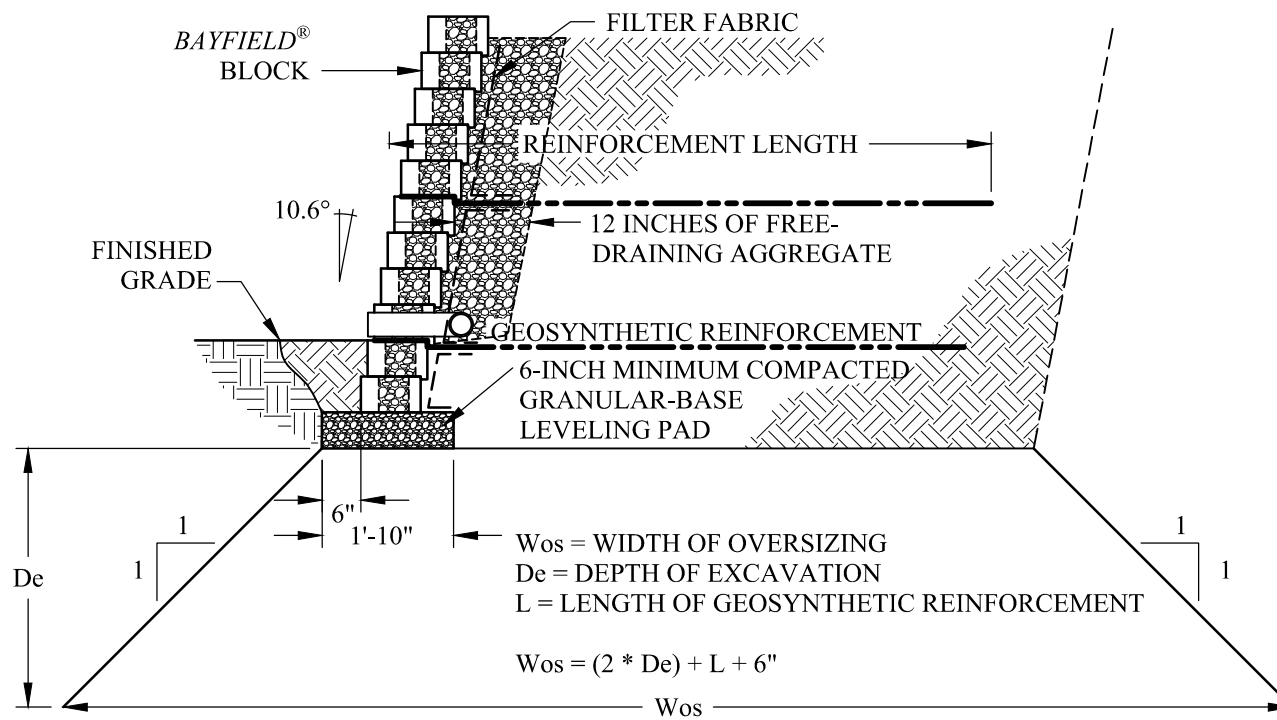
Typical Gravity Cross Section

Scale:
3/8" = 1'-0"

Drawn By:
AWE

Date:
3/1/2012

Drawing Number:
BFMP05



This drawing is for illustrative purposes only and should not be used for construction without the signature of a registered professional engineer.

www.anchordiamond.com

© 2024 ANCHOR Engineering, LLC® and © 2024 ANCHOR DIAMOND®

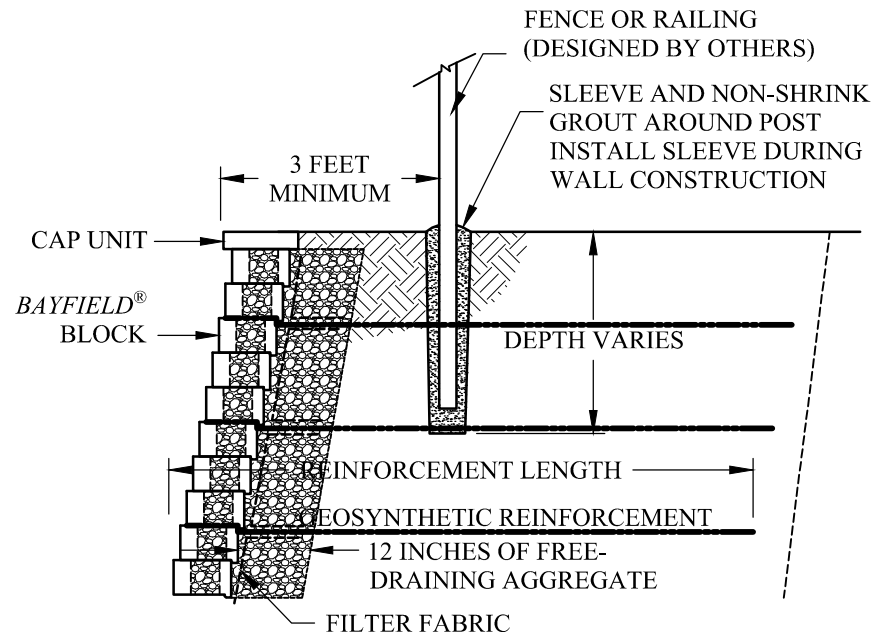
Bayfield® Retaining Wall System Typical Excavation Oversizing

Scale:
 3/8" = 1'-0"

Drawn By:
 AWE

Date:
 3/1/2012

Drawing Number:
 BFMP06



This drawing is for illustrative purposes only and should not be used for construction without the signature of a registered professional engineer.

www.anchordiamond.com

© 2024 ANCHOR Engineering, LLC® and © 2024 ANCHOR DIAMOND®

Bayfield® Retaining Wall System

Typical Fence Cross Section

Scale:
3/8" - 1'-0"

Drawn By:
AWE

Date:
3/1/2012

Drawing Number:
BFMP07



This drawing is for illustrative purposes only and should not be used for construction without the signature of a registered professional engineer.

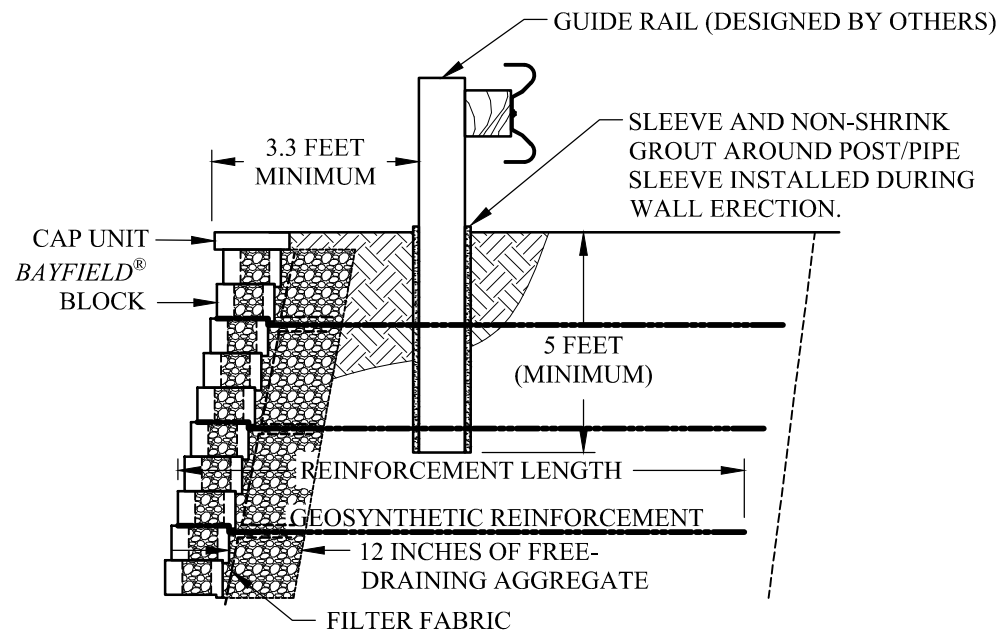
www.anchordiamond.com

© 2024 ANCHOR Engineering, LLC® and © 2024 ANCHOR DIAMOND®

Bayfield® Retaining Wall System

Typical Fence Section with Sleeve-It

Scale:	Drawn By:
3/8" - 1'-0"	AWE
Date:	Drawing Number:
3/2/2012	BFMP08



This drawing is for illustrative purposes only and should not be used for construction without the signature of a registered professional engineer.

www.anchordiamond.com

© 2024 ANCHOR Engineering, LLC® and © 2024 ANCHOR DIAMOND®

Bayfield® Retaining Wall System

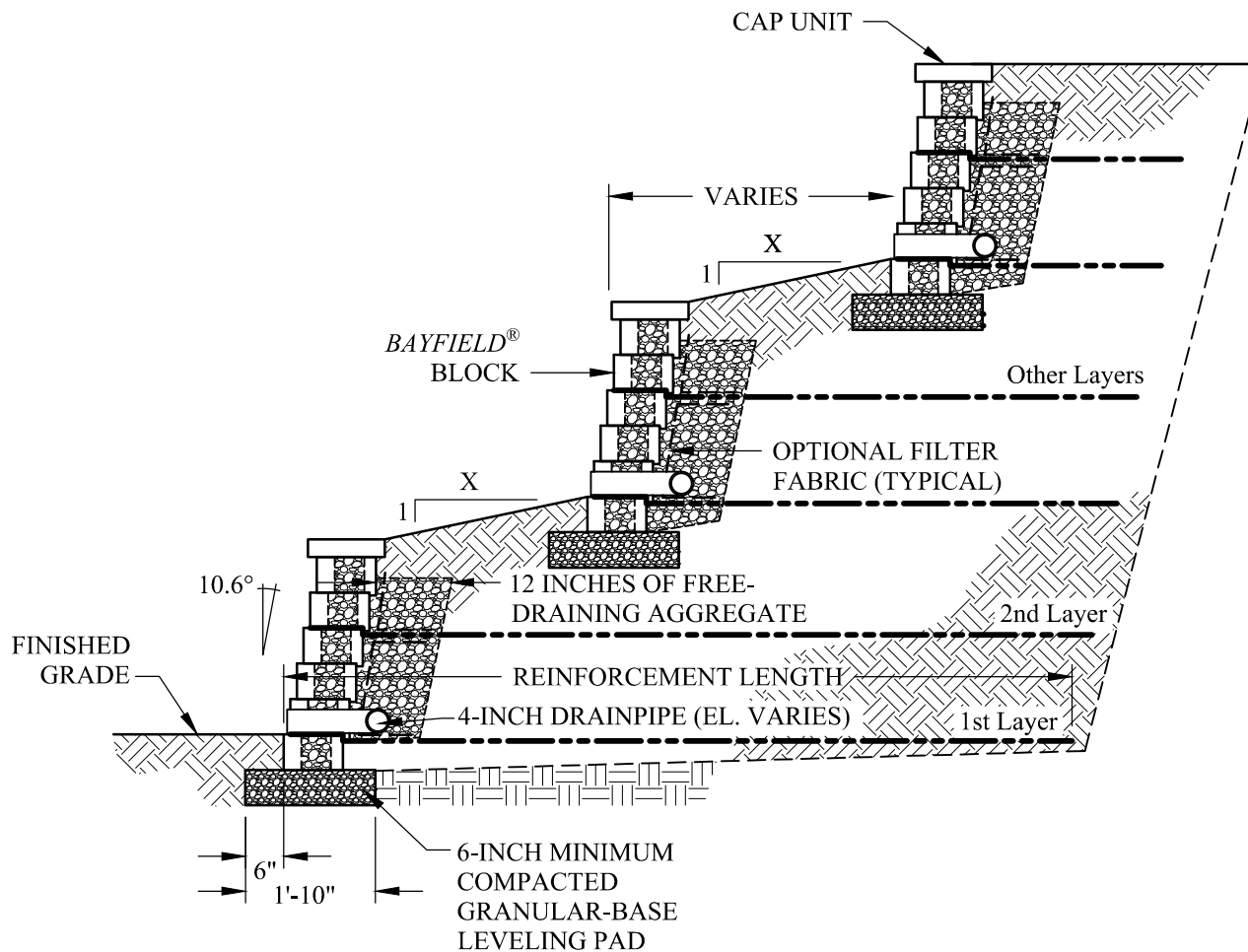
Typical Guide Rail Section

Scale:
3/8" - 1'-0"

Drawn By:
AWE

Date:
3/1/2012

Drawing Number:
BFMP09



This drawing is for illustrative purposes only and should not be used for construction without the signature of a registered professional engineer.

www.anchordiamond.com

© 2024 ANCHOR Engineering, LLC® and © 2024 ANCHOR DIAMOND®

Bayfield® Retaining Wall System

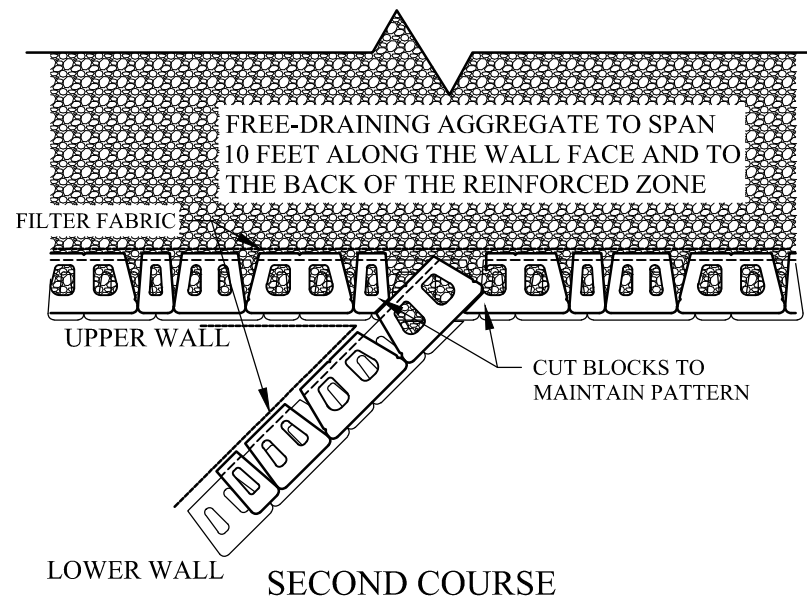
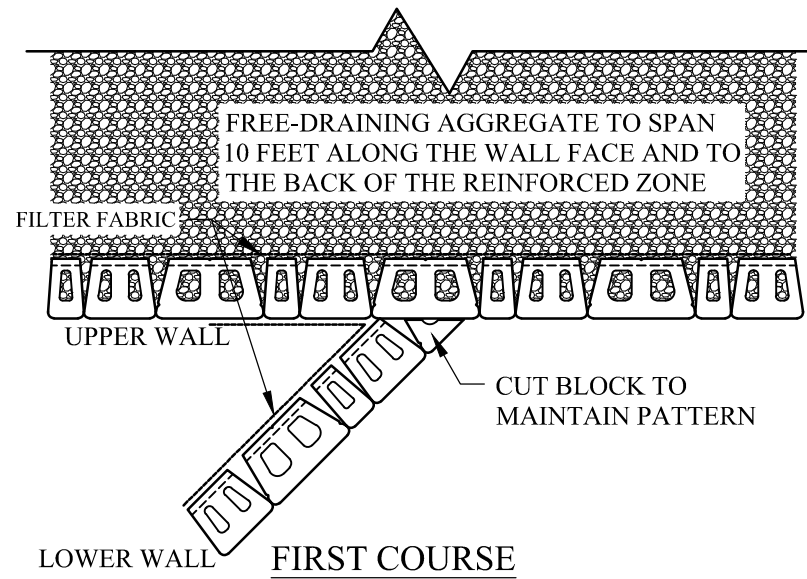
Typical Terraced Wall Cross Section

Scale:
3/8" - 1'-0"

Drawn By:
AWE

Date:
3/1/2012

Drawing Number:
BFMP10



This drawing is for illustrative purposes only and should not be used for construction without the signature of a registered professional engineer.

www.anchordiamond.com

© 2024 ANCHOR Engineering, LLC® and © 2024 ANCHOR DIAMOND®

Bayfield® Retaining Wall System

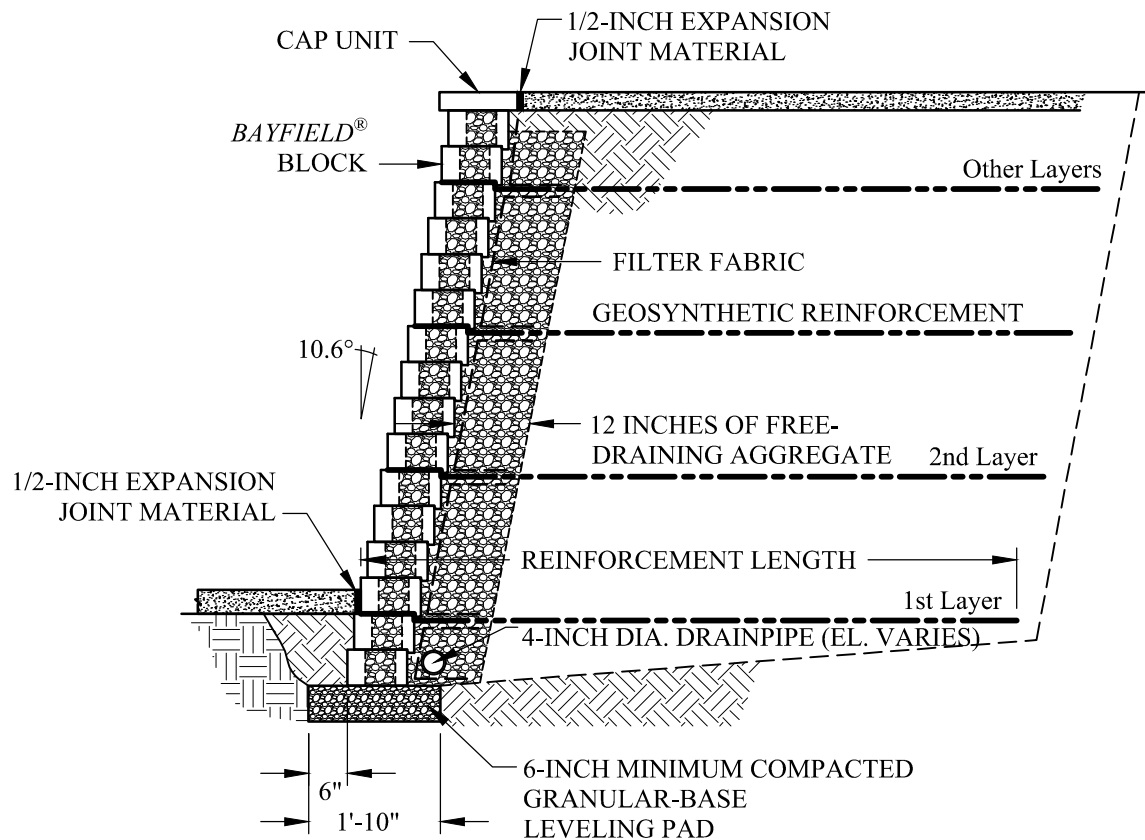
Typical Terraced Wall Connection

Scale:
3/8" - 1'-0"

Drawn By:
AWE

Date:
3/1/2012

Drawing Number:
BFMP11



This drawing is for illustrative purposes only and should not be used for construction without the signature of a registered professional engineer.

www.anchordiamond.com

© 2024 ANCHOR Engineering, LLC® and © 2024 ANCHOR DIAMOND®

Bayfield® Retaining Wall System

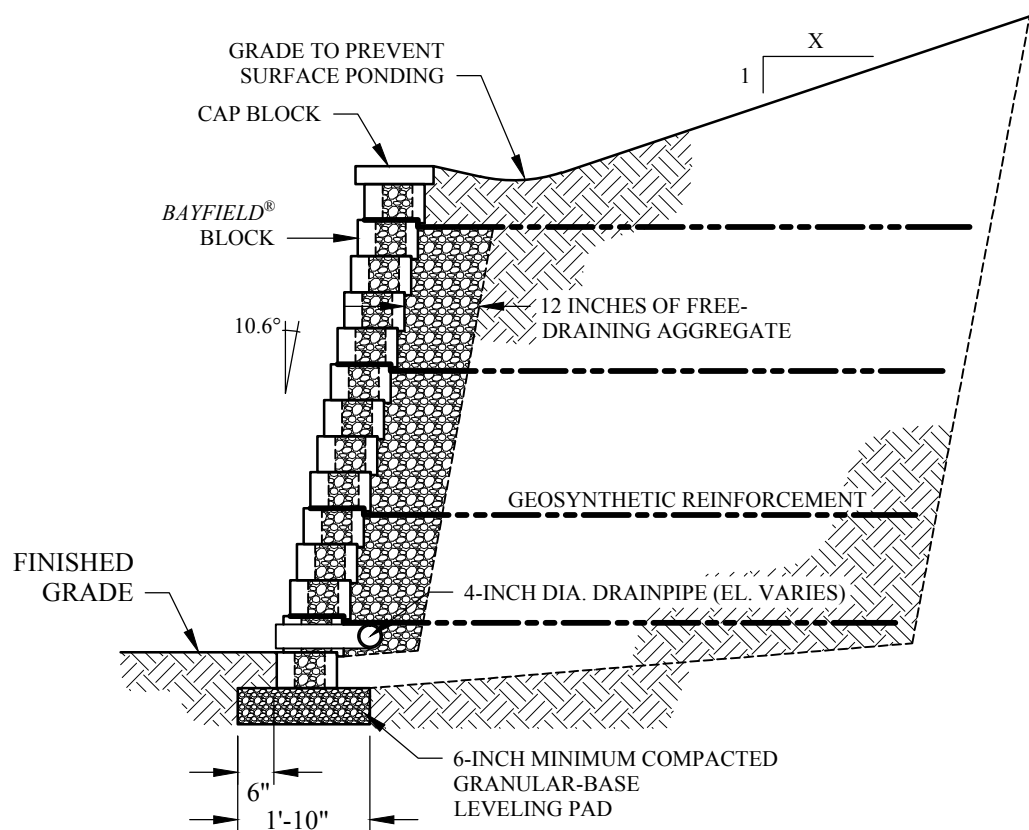
Typical Cross Section with Sidewalk

Scale:
3/8" - 1'-0"

Drawn By:
AWE

Date:
3/1/2012

Drawing Number:
BFMP12



This drawing is for illustrative purposes only and should not be used for construction without the signature of a registered professional engineer.

www.anchordiamond.com

© 2024 ANCHOR Engineering, LLC® and © 2024 ANCHOR DIAMOND®

Bayfield® Retaining Wall System

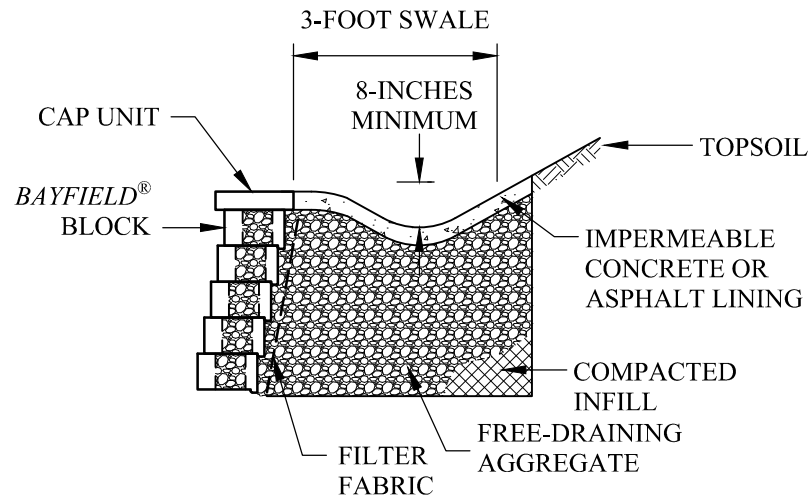
Typical Cross Section with Crest Slope

Scale:
3/8" = 1'-0"

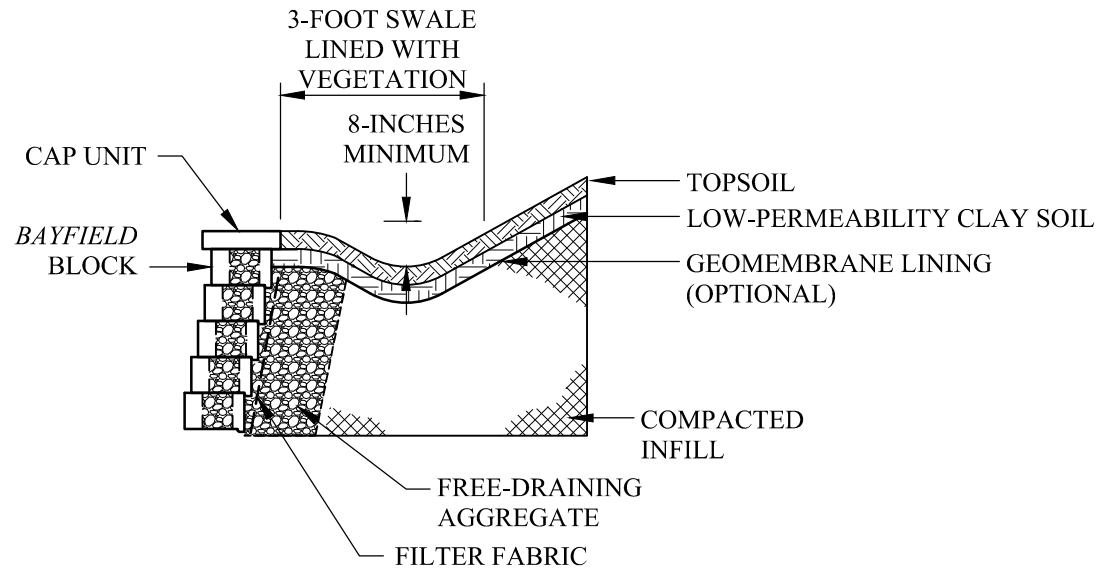
Drawn By:
AWE

Date:
3/1/2012

Drawing Number:
BFMP13



CONCRETE OR ASPHALT SWALE



VEGETATED SWALE

REFER TO THE NCMA DESIGN
MANUAL FOR ADDITIONAL DETAILS



This drawing is for illustrative purposes only and should not be used for construction without the signature of a registered professional engineer.

www.anchordiamond.com

© 2024 ANCHOR Engineering, LLC® and © 2024 ANCHOR DIAMOND®

Bayfield® Retaining Wall System

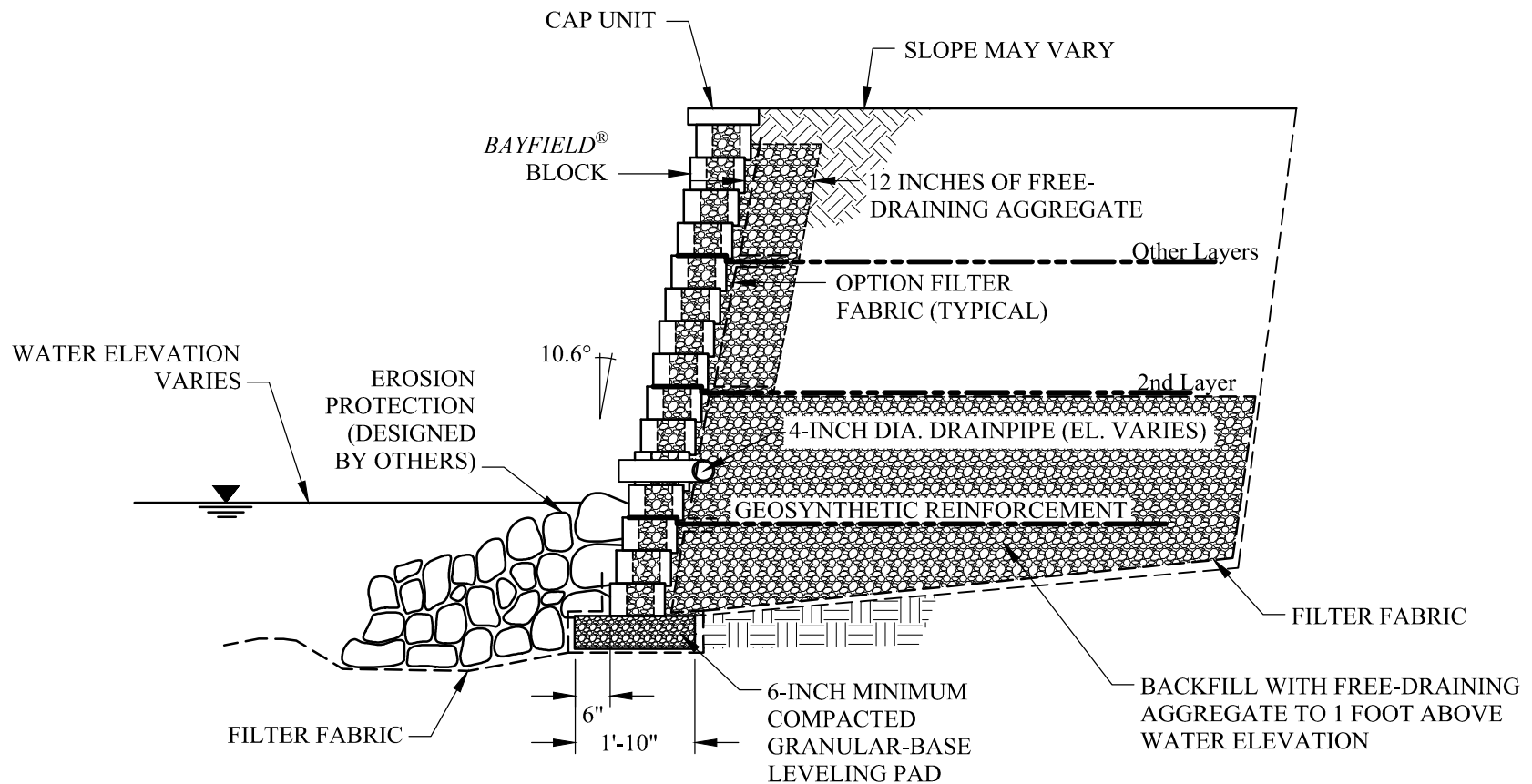
Typical Drainage Swale Cross Section

Scale:
3/8" - 1'-0"

Drawn By:
AWE

Date:
3/1/2012

Drawing Number:
BFMP14



This drawing is for illustrative purposes only and should not be used for construction without the signature of a registered professional engineer.

www.anchordiamond.com

© 2024 ANCHOR Engineering, LLC® and © 2024 ANCHOR DIAMOND®

Bayfield® Retaining Wall System

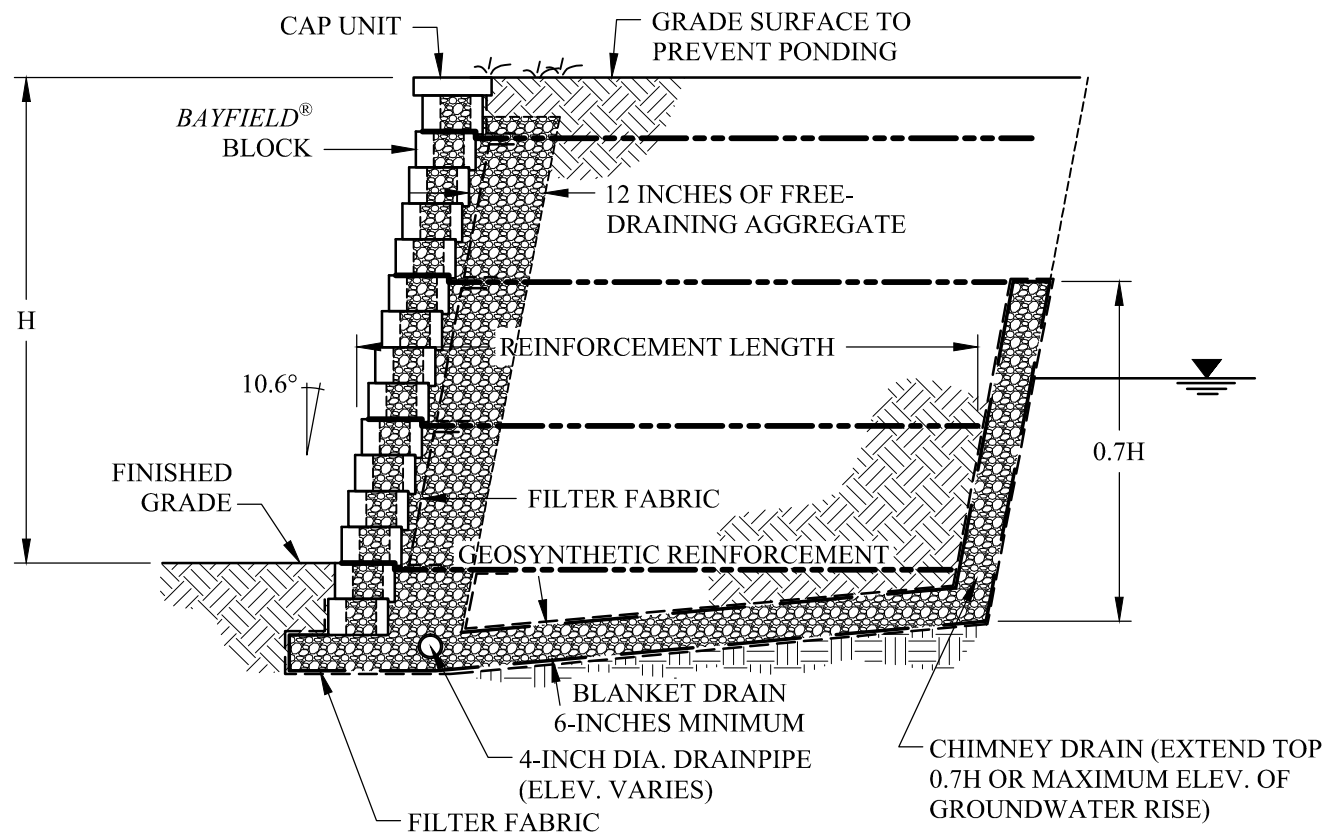
Typical Shore Cross Section

Scale:
3/8" - 1'-0"

Drawn By:
AWE

Date:
3/1/2012

Drawing Number:
BFMP15



This drawing is for illustrative purposes only and should not be used for construction without the signature of a registered professional engineer.

www.anchordiamond.com

© 2024 ANCHOR Engineering, LLC® and © 2024 ANCHOR DIAMOND®

Bayfield® Retaining Wall System

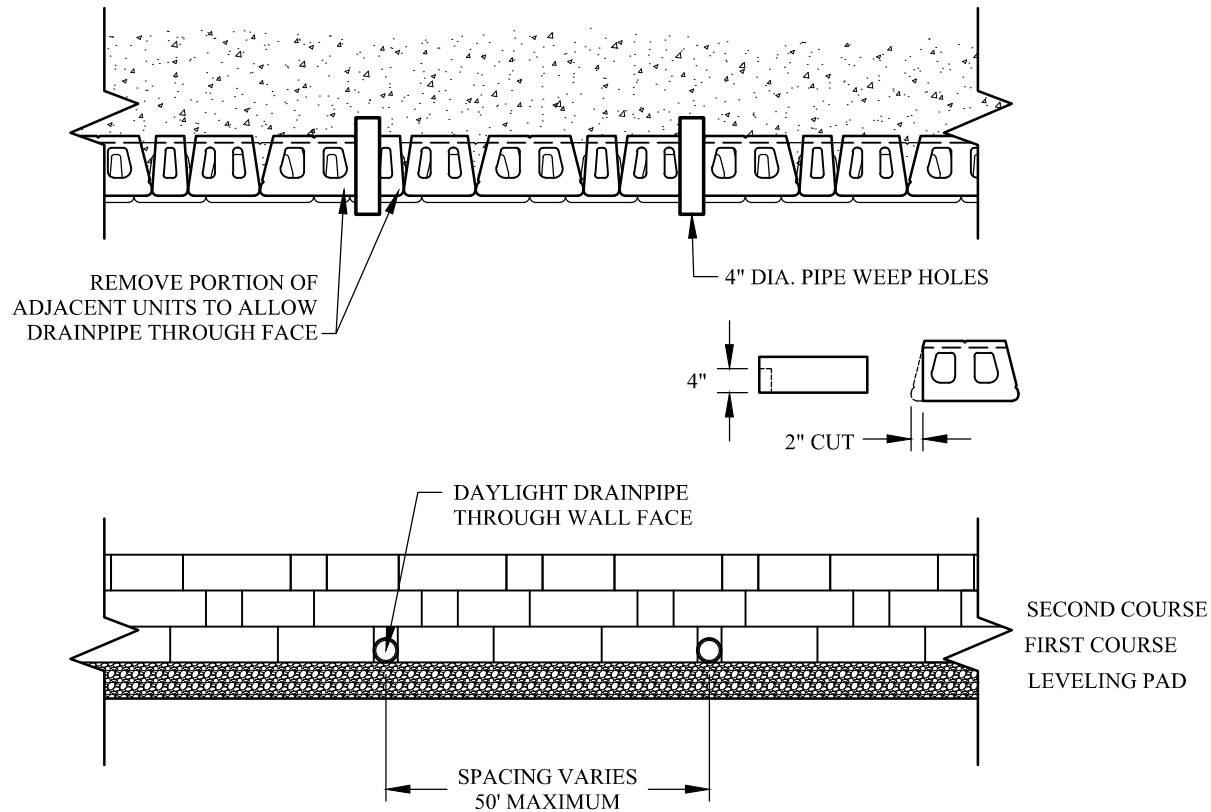
Typical Groundwater Intrusion Cross Section

Scale:
3/8" - 1'-0"

Drawn By:
AWE

Date:
3/1/2012

Drawing Number:
BFMP16



This drawing is for illustrative purposes only and should not be used for construction without the signature of a registered professional engineer.

www.anchordiamond.com

© 2024 ANCHOR Engineering, LLC® and © 2024 ANCHOR DIAMOND®

Bayfield[®] Retaining Wall System

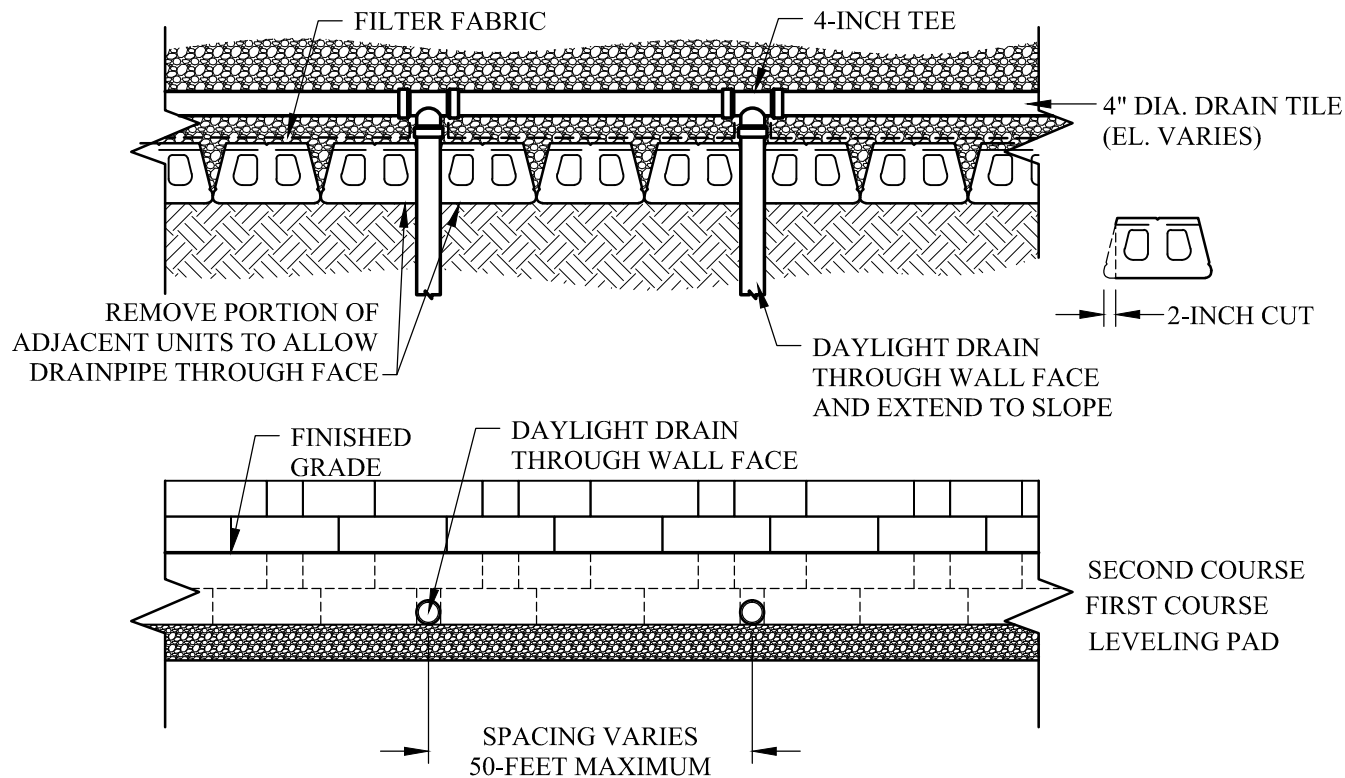
Typical Drain Pipe Through Wall Face

Scale:
3/8" = 1'-0"

Drawn By:
AWE

Date:
2/23/2012

Drawing Number:
BFMP17



This drawing is for illustrative purposes only and should not be used for construction without the signature of a registered professional engineer.

www.anchordiamond.com

© 2024 ANCHOR Engineering, LLC® and © 2024 ANCHOR DIAMOND®

Bayfield® Retaining Wall System

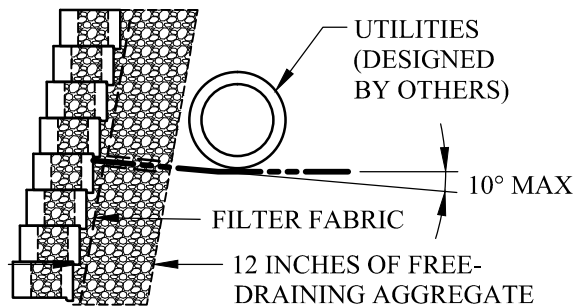
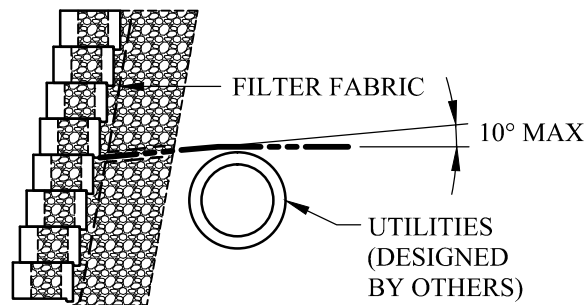
Typical Drain Pipe Through Toe Slope

Scale:
3/8" = 1'-0"

Drawn By:
AWE

Date:
2/20/2012

Drawing Number:
BFMP18



This drawing is for illustrative purposes only and should not be used for construction without the signature of a registered professional engineer.

www.anchordiamond.com

© 2024 ANCHOR Engineering, LLC® and © 2024 ANCHOR DIAMOND®

Bayfield® Retaining Wall System

Typical Cross Section with Parallel Utilities

Scale:
3/8" - 1'-0"

Drawn By:
AWE

Date:
3/1/2012

Drawing Number:
BFMP19



This drawing is for illustrative purposes only and should not be used for construction without the signature of a registered professional engineer.

www.anchordiamond.com

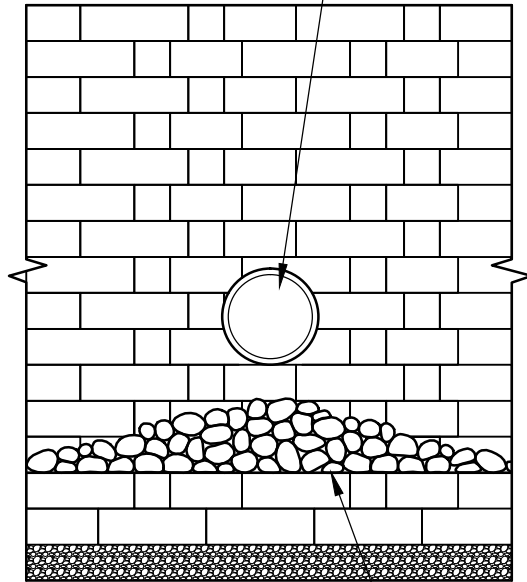
© 2024 ANCHOR Engineering, LLC® and © 2024 ANCHOR DIAMOND®

Bayfield® Retaining Wall System

Typical Utilities Below Wall

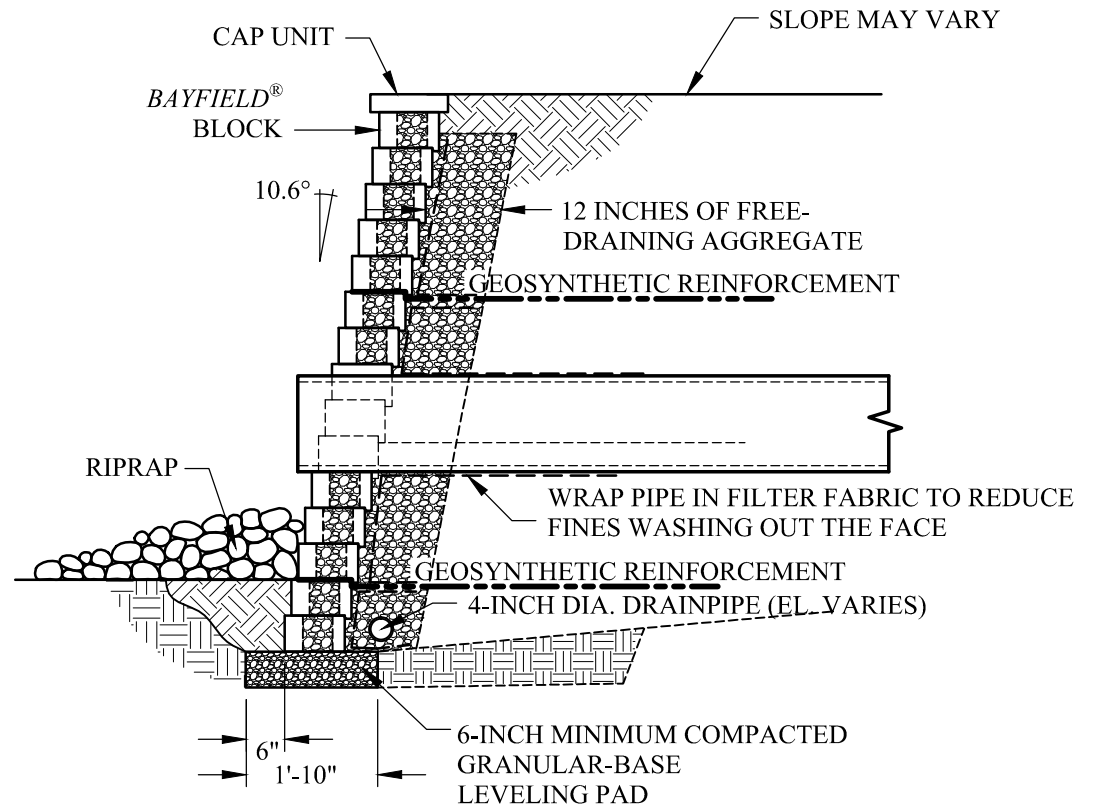
Scale:	Drawn By:
3/8" - 1'-0"	AWE
Date:	Drawing Number:
---	BFMP20

HAND-CUT BLOCK UNITS
TO WITHIN 1/2-INCH OF PIPE



SCOUR PROTECTION AS REQUIRED. —
USE RIPRAP OR PRECAST SLAB IN
OUTLET AREA DESIGNED BY OTHERS)

ELEVATION VIEW



SECTION VIEW



**ANCHOR
DIAMOND™**

This drawing is for illustrative purposes only and
should not be used for construction without the
signature of a registered professional engineer.

www.anchordiamond.com

© 2024 ANCHOR Engineering, LLC® and © 2024 ANCHOR DIAMOND®

Bayfield® Retaining Wall System

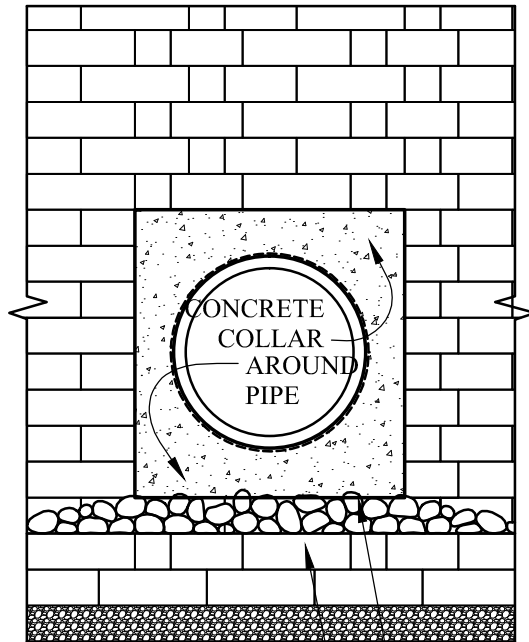
Typical Small Utilities Through Wall

Scale:
3/8" - 1'-0"

Drawn By:
AWE

Date:
3/1/2012

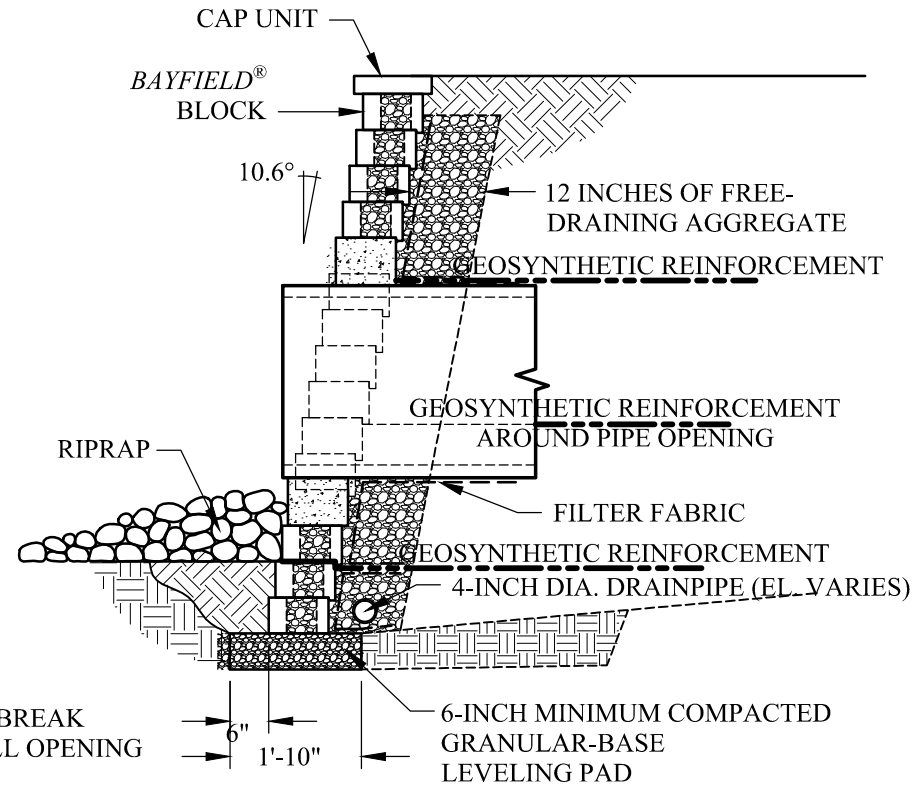
Drawing Number:
BFMP21



SCOUR PROTECTION AS REQUIRED.
USE RIPRAP OR PRECAST SLAB IN
OUTLET AREA (DESIGNED BY OTHERS)

PLACE BOND BREAK
AROUND WALL OPENING

ELEVATION VIEW



SECTION VIEW



This drawing is for illustrative purposes only and should not be used for construction without the signature of a registered professional engineer.

www.anchordiamond.com

© 2024 ANCHOR Engineering, LLC® and © 2024 ANCHOR DIAMOND®

Bayfield® Retaining Wall System

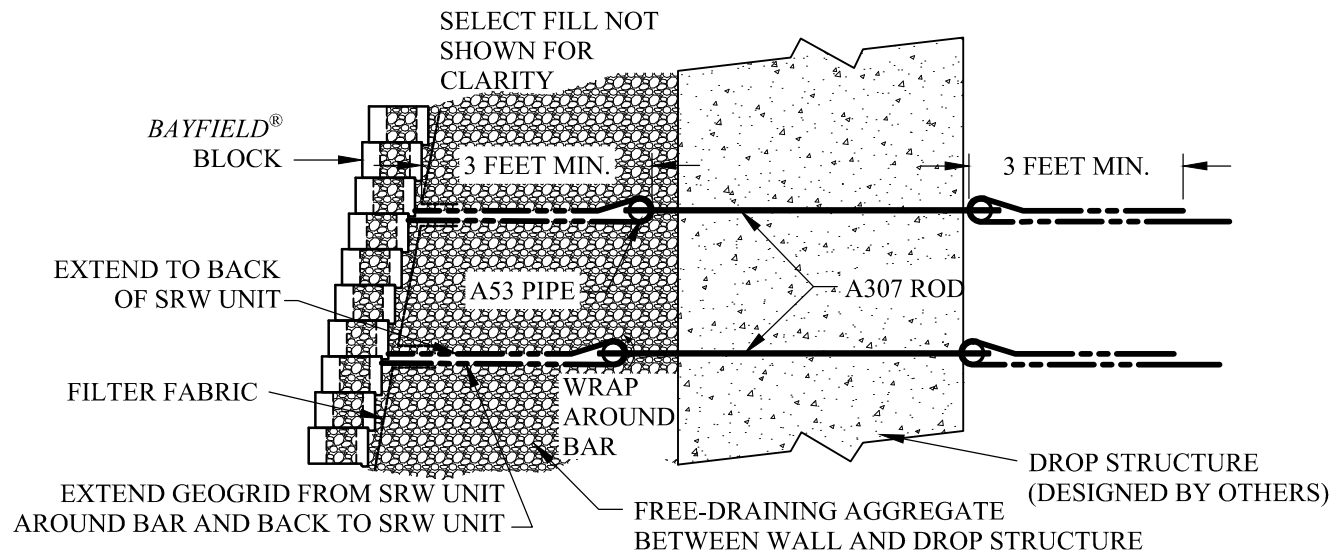
Typical Large Utilities Through Wall

Scale:
3/8" = 1'-0"

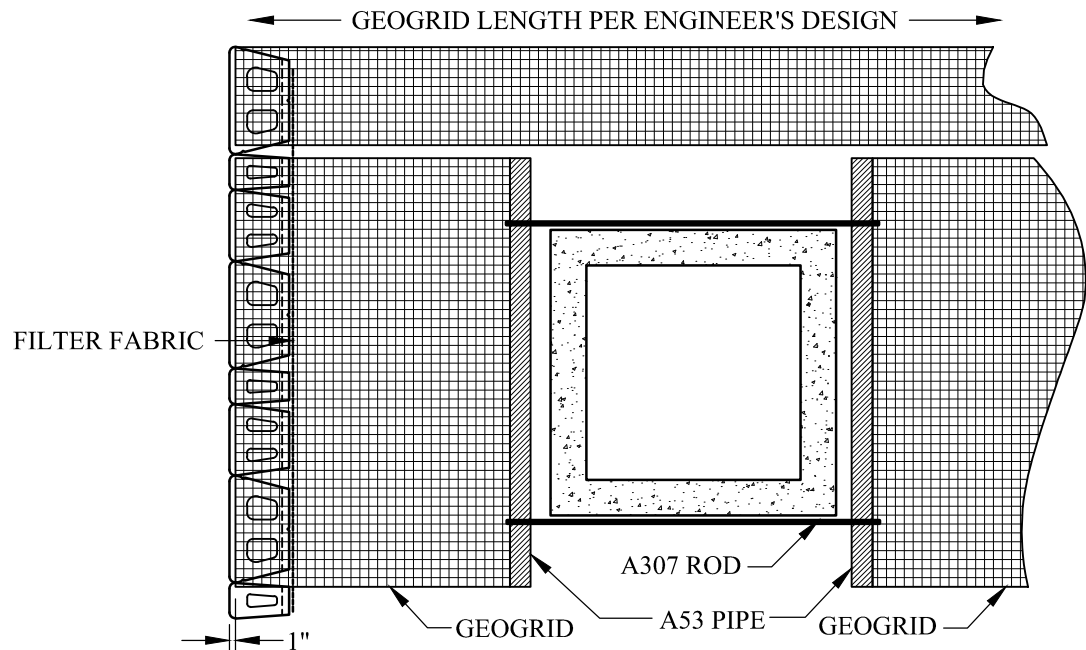
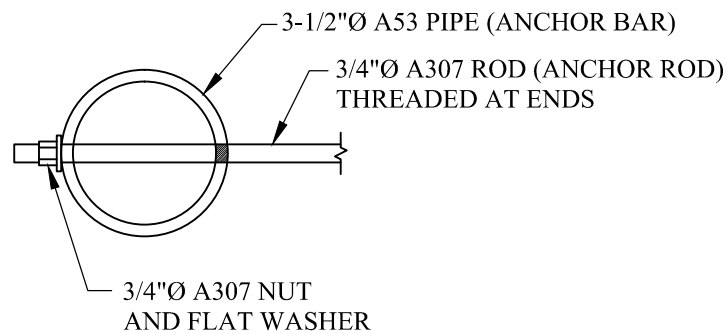
Drawn By:
AWE

Date:
2/20/2012

Drawing Number:
BFMP22



NOTE: PIPE AND BAR SIZES SHOWN ARE MINIMUMS AND MAY REQUIRE ENGINEERING PRIOR TO CONSTRUCTION OF THE SEGMENTAL RETAINING WALLS



ANCHOR
DIAMOND™

This drawing is for illustrative purposes only and should not be used for construction without the signature of a registered professional engineer.

www.anchordiamond.com

© 2024 ANCHOR Engineering, LLC® and © 2024 ANCHOR DIAMOND®

Bayfield® Retaining Wall System

Typical Drop Structure Behind Wall

Scale:
3/8" - 1'-0"

Drawn By:
AWE

Date:
3/2/2012

Drawing Number:
BFMP23



This drawing is for illustrative purposes only and should not be used for construction without the signature of a registered professional engineer.

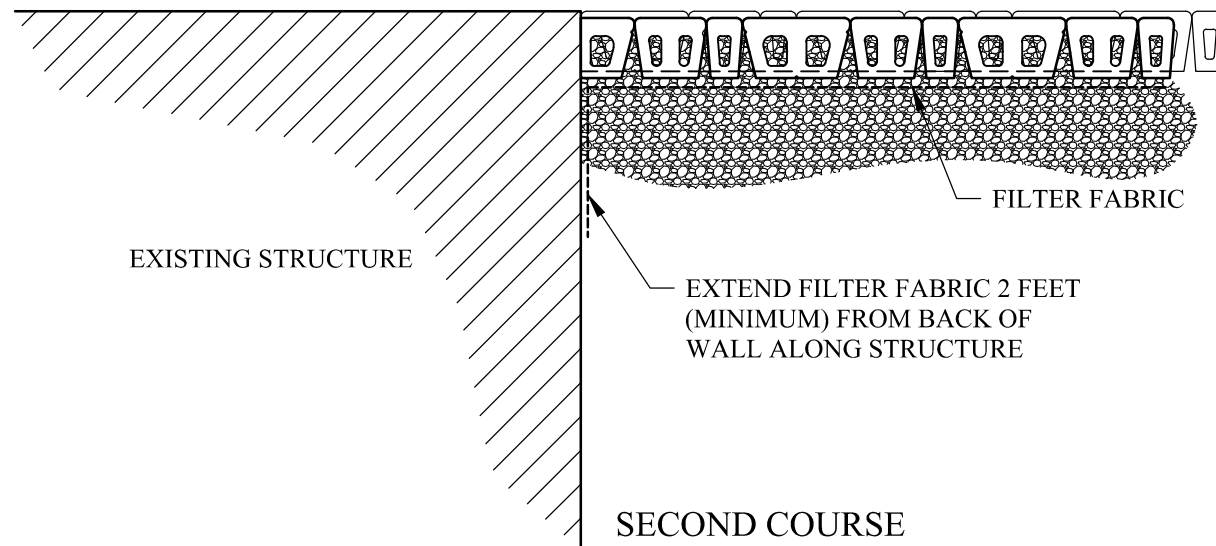
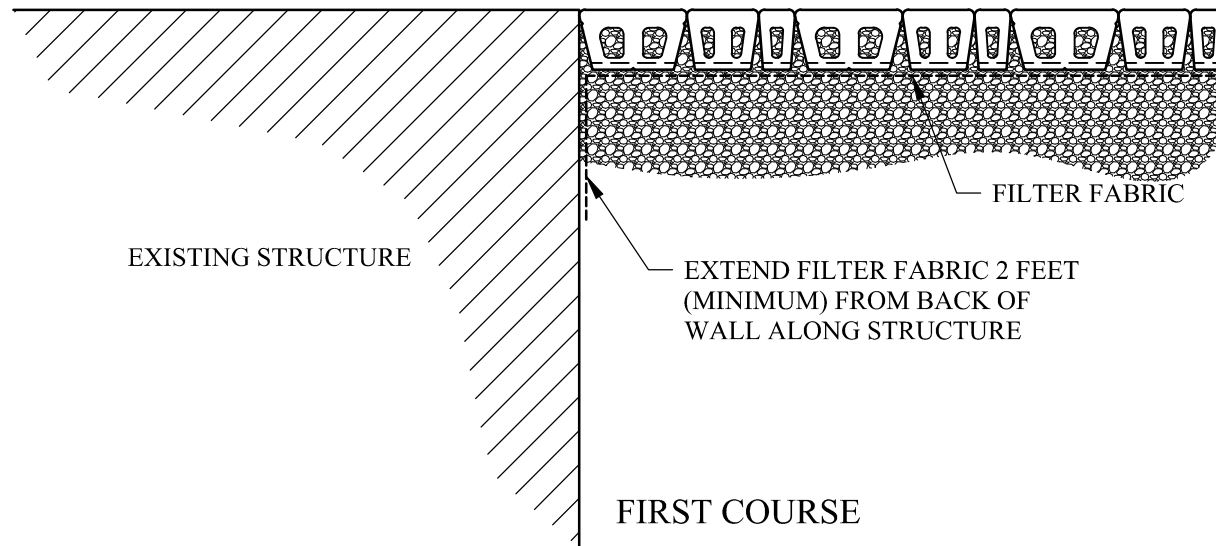
www.anchordiamond.com

© 2024 ANCHOR Engineering, LLC® and © 2024 ANCHOR DIAMOND®

Bayfield[®] Retaining Wall System

Typical Alternate Structure Behind Wall

Scale:	Drawn By:
3/8" = 1'-0"	AWE
Date:	Drawing Number:
---	BFMP24



This drawing is for illustrative purposes only and should not be used for construction without the signature of a registered professional engineer.

www.anchordiamond.com

© 2024 ANCHOR Engineering, LLC® and © 2024 ANCHOR DIAMOND®

Bayfield® Retaining Wall System

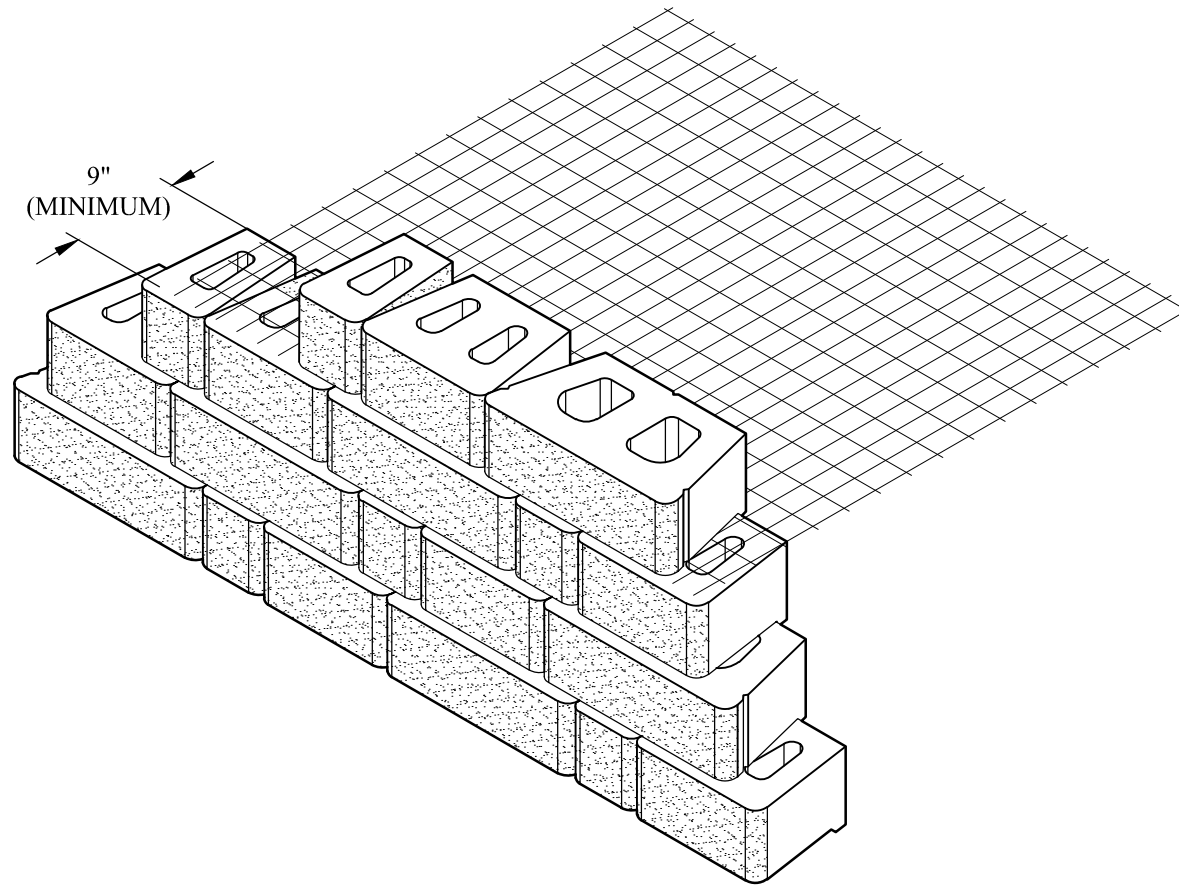
Typical Wall Abutting Structure

Scale:
3/8" = 1'-0"

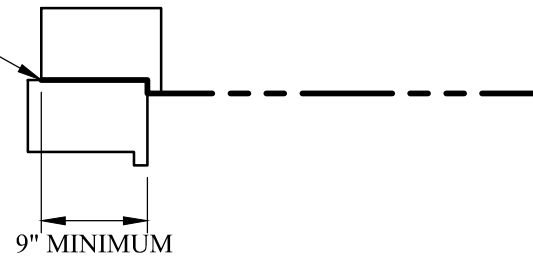
Drawn By:
AWE

Date:
2/22/2012

Drawing Number:
BFMP25



EXTEND GEOSYNTHETIC
REINFORCEMENT TO WITHIN 1"
OF THE LOWER BLOCK FACE



This drawing is for illustrative purposes only and should not be used for construction without the signature of a registered professional engineer.

www.anchordiamond.com

© 2024 ANCHOR Engineering, LLC® and © 2024 ANCHOR DIAMOND®

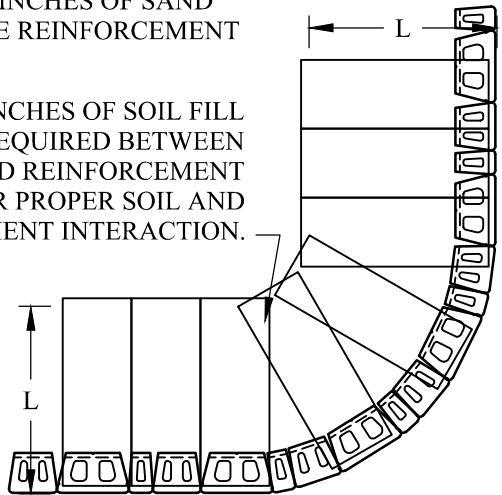
Bayfield® Retaining Wall System

Typical Reinforcement Connection

Scale:	None	Drawn By:	AWE
Date:	3/1/2012	Drawing Number:	BFMP26

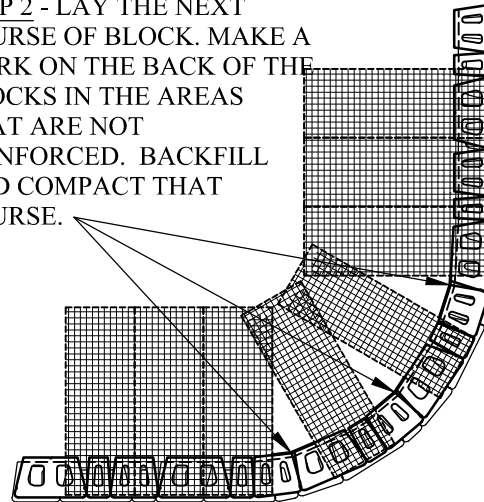
STEP 1 - PLACE REINFORCEMENT TO
WITHIN 1-INCH OF FACE SO LITTLE
OR NO OVERLAP OCCURS IN THE
RADIUS AREA. IF OVERLAP OCCURS,
PLACE 2 TO 3 INCHES OF SAND
BETWEEN THE REINFORCEMENT
LAYERS.

2 TO 3 INCHES OF SOIL FILL
REQUIRED BETWEEN
OVERLAPPED REINFORCEMENT
FOR PROPER SOIL AND
REINFORCEMENT INTERACTION.

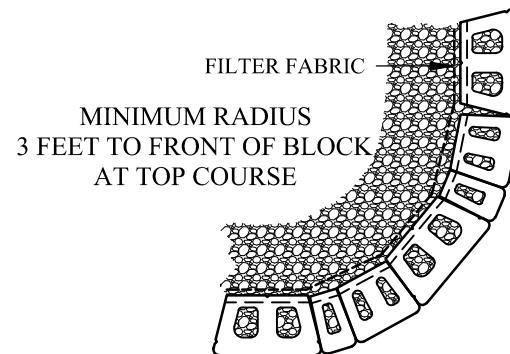
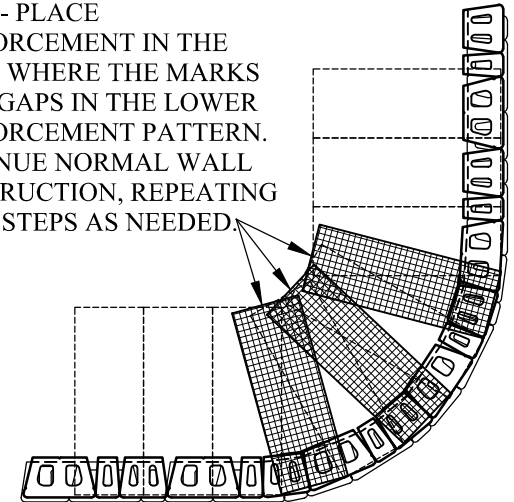


PRIMARY
STRENGTH
DIRECTION

STEP 2 - LAY THE NEXT
COURSE OF BLOCK. MAKE A
MARK ON THE BACK OF THE
BLOCKS IN THE AREAS
THAT ARE NOT
REINFORCED. BACKFILL
AND COMPACT THAT
COURSE.



STEP 3 - PLACE
REINFORCEMENT IN THE
AREAS WHERE THE MARKS
SHOW GAPS IN THE LOWER
REINFORCEMENT PATTERN.
CONTINUE NORMAL WALL
CONSTRUCTION, REPEATING
THESE STEPS AS NEEDED.



This drawing is for illustrative purposes only and
should not be used for construction without the
signature of a registered professional engineer.

www.anchordiamond.com

© 2024 ANCHOR Engineering, LLC® and © 2024 ANCHOR DIAMOND®

Bayfield® Retaining Wall System

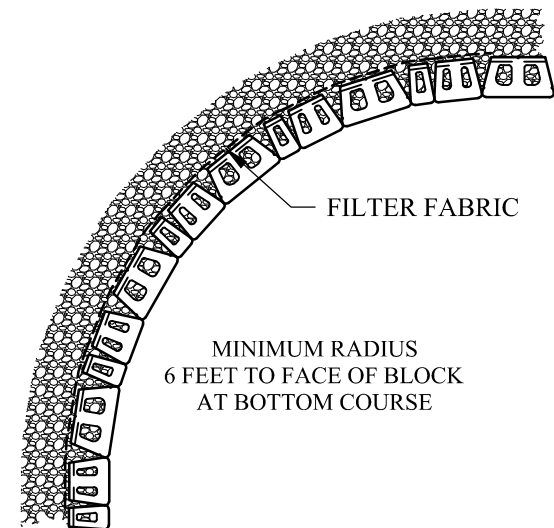
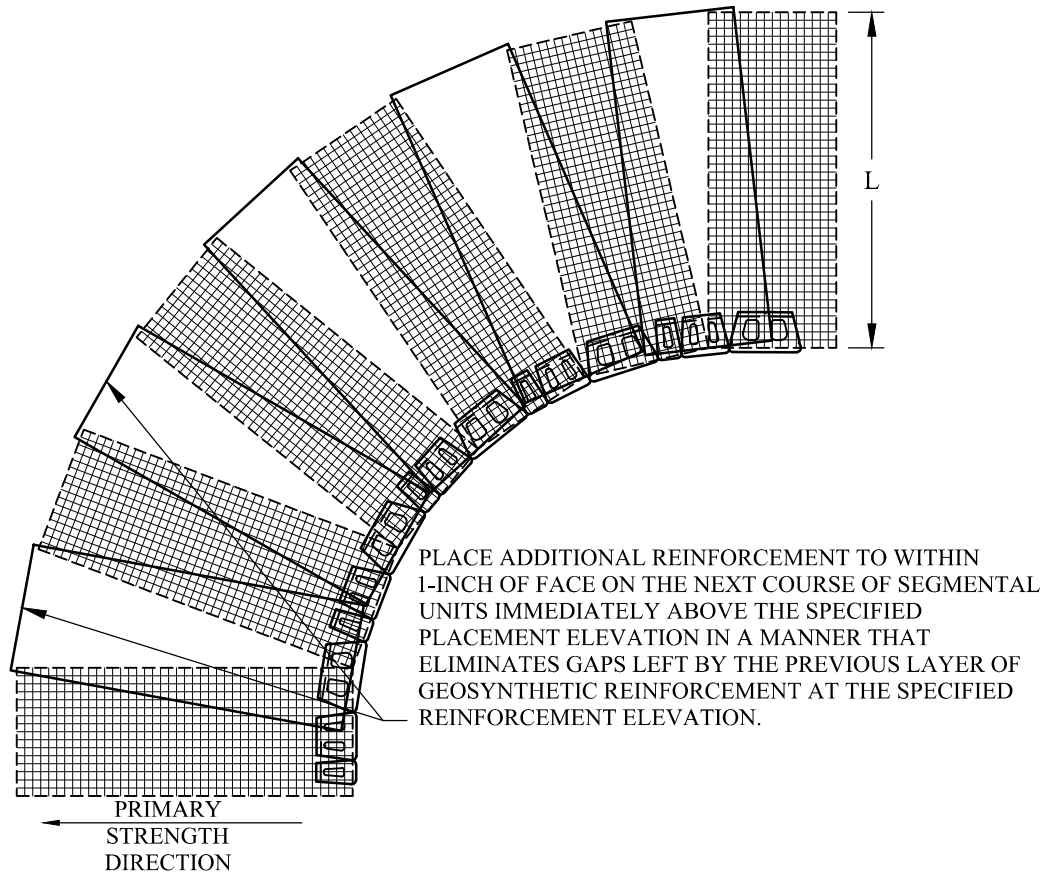
Typical Outside Curves

Scale:
1/4" - 1'-0"

Drawn By:
AWE

Date:
3/2/2012

Drawing Number:
BFMP27



This drawing is for illustrative purposes only and should not be used for construction without the signature of a registered professional engineer.

www.anchordiamond.com

© 2024 ANCHOR Engineering, LLC® and © 2024 ANCHOR DIAMOND®

Bayfield® Retaining Wall System

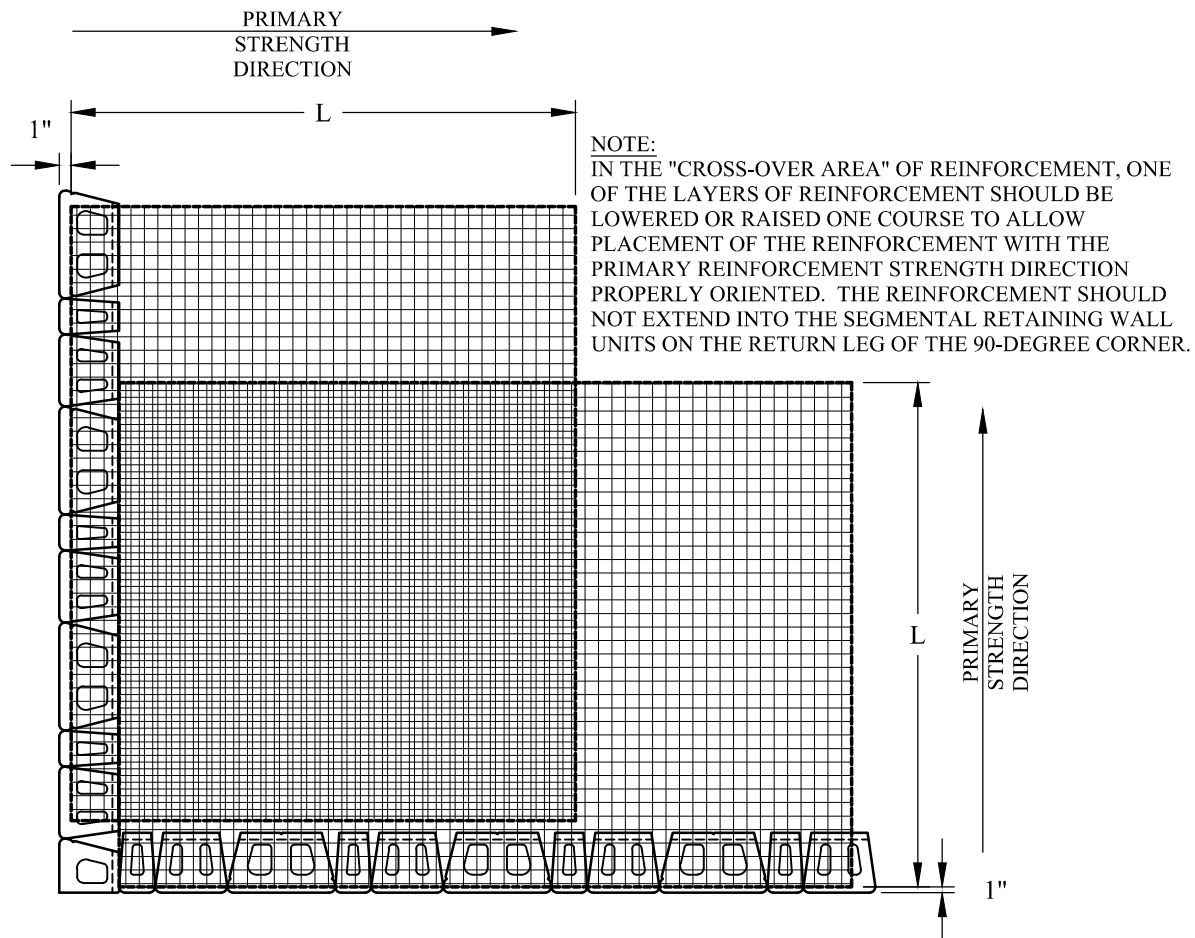
Typical Inside Curves

Scale:
1/4" - 1'-0"

Drawn By:
AWE

Date:
3/2/2012

Drawing Number:
BFMP28



This drawing is for illustrative purposes only and should not be used for construction without the signature of a registered professional engineer.

www.anchordiamond.com

© 2024 ANCHOR Engineering, LLC® and © 2024 ANCHOR DIAMOND®

Bayfield® Retaining Wall System

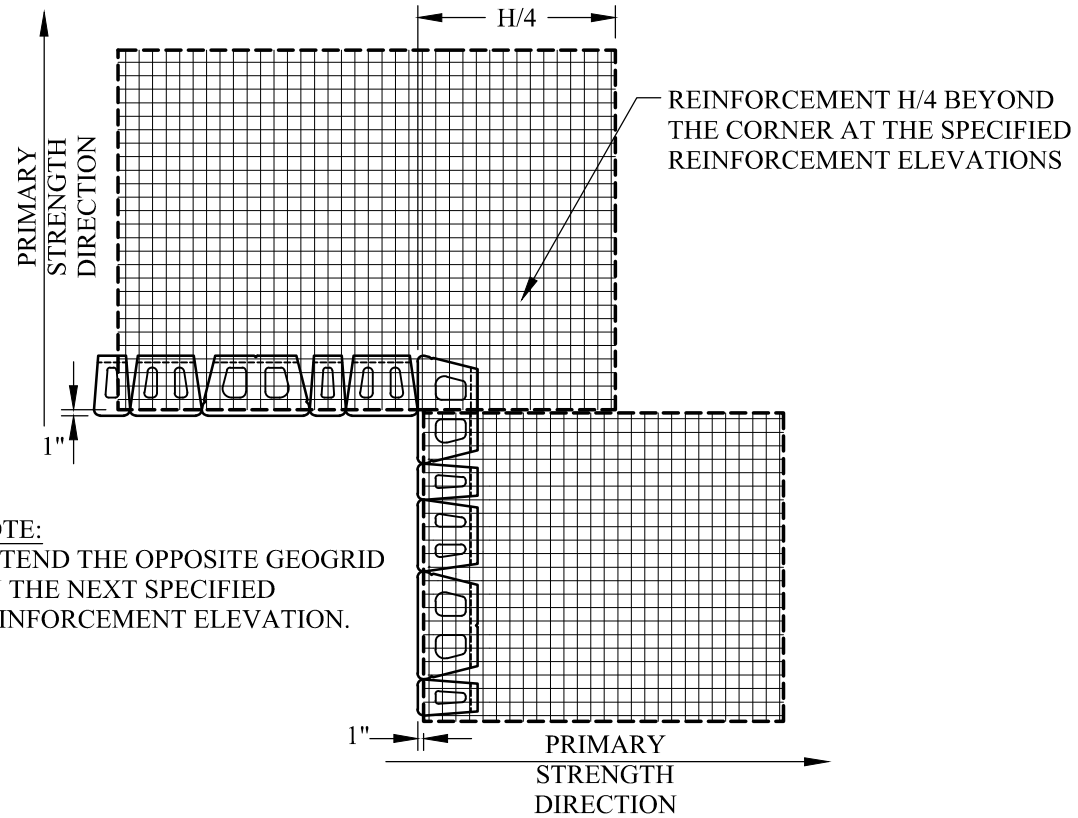
Typical Outside Corners

Scale:
3/8" - 1'-0"

Drawn By:
AWE

Date:
3/2/2012

Drawing Number:
BFMP29



This drawing is for illustrative purposes only and should not be used for construction without the signature of a registered professional engineer.

www.anchordiamond.com

© 2024 ANCHOR Engineering, LLC® and © 2024 ANCHOR DIAMOND®

Bayfield® Retaining Wall System

Typical Inside Corners

Scale:
3/8" - 1'-0"

Drawn By:
AWE

Date:
3/2/2012

Drawing Number:
BFMP30



This drawing is for illustrative purposes only and should not be used for construction without the signature of a registered professional engineer.

www.anchordiamond.com

© 2024 ANCHOR Engineering, LLC® and © 2024 ANCHOR DIAMOND®

Bayfield[®] Retaining Wall System

Typical Outside Angles

Scale:

3/8" = 1'-0"

Drawn By:

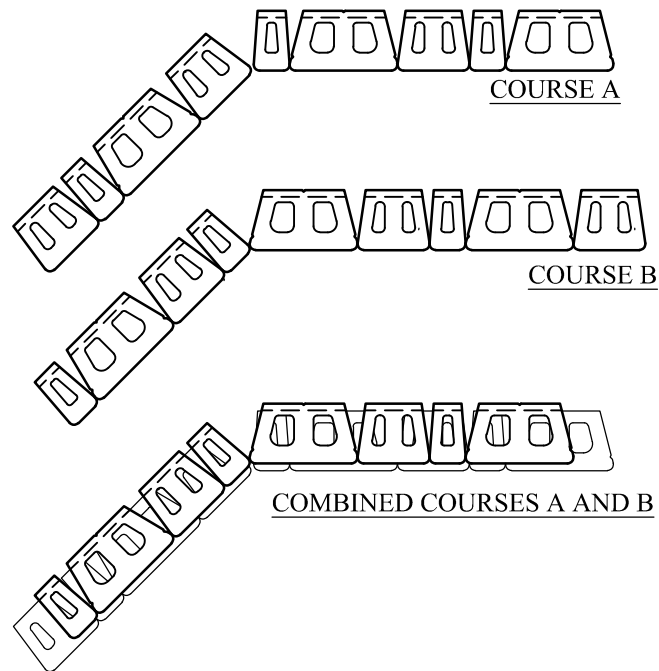
AWE

Date:

3/2/2012

Drawing Number:

BFMP31



This drawing is for illustrative purposes only and should not be used for construction without the signature of a registered professional engineer.

www.anchordiamond.com

© 2024 ANCHOR Engineering, LLC® and © 2024 ANCHOR DIAMOND®

Bayfield® Retaining Wall System

Typical Inside Angles

Scale:

3/8" = 1'-0"

Drawn By:

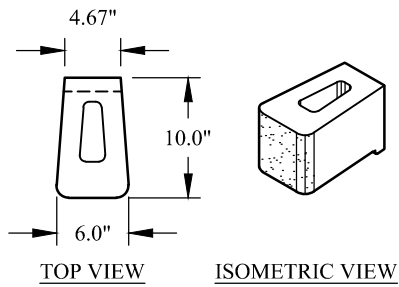
AWE

Date:

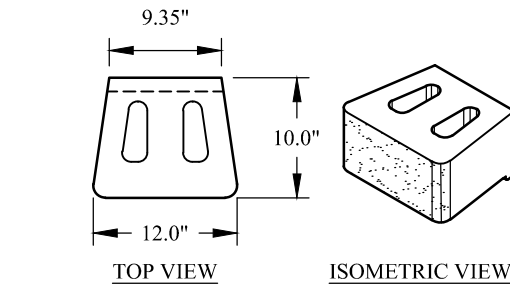
3/1/2012

Drawing Number:

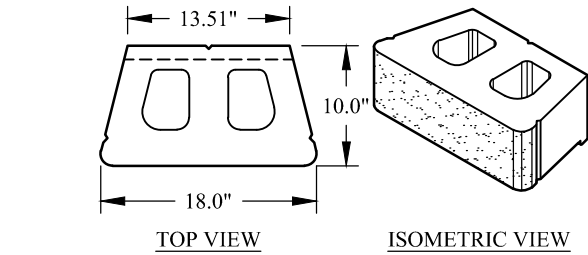
BFMP32



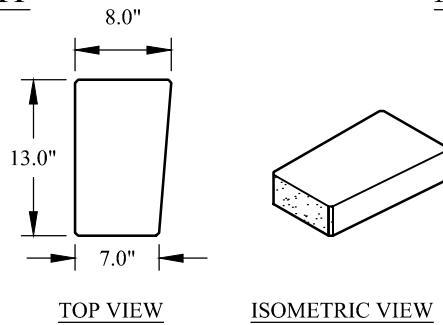
SMALL UNIT



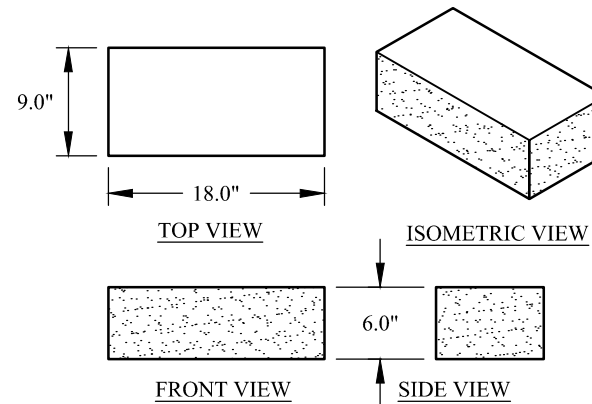
MEDIUM UNIT



LARGE UNIT



CAP UNIT



CORNER UNIT



This drawing is for illustrative purposes only and should not be used for construction without the signature of a registered professional engineer.

www.anchordiamond.com

© 2024 ANCHOR Engineering, LLC® and © 2024 ANCHOR DIAMOND®

Bayfield® Retaining Wall System

Stone Cut Multi Piece

Scale:
3/4" = 1'-0"

Drawn By:
AWE

Date:
3/1/2012

Drawing Number:
BFMP40