

AMTC™

ANCHOR MOLD & TOOL COMPANY



COMMERCIAL CORE PRODUCTS AND SERVICES

PROVIDING THE QUALITY PRODUCTS
THAT MAKE OUR CUSTOMERS SUCCESSFUL





AMTC

Anchor Mold & Tooling Company

BRAWN MEETS BRAINS

The precision-machined mold and tooling parts from AMTC are known for their durability and consistency. It starts with stock steel, and the AMTC team of talented and experienced technicians alongside the industry's most state-of-the-art high-speed milling and CNC machines turn it into the molds you've come to rely upon.

Comprehensive Mold and Tooling Services

AMTC makes quality molds for all major block machines, including those by Tiger, Besser and Columbia. They produce splitter assemblies for wall and masonry products—including those using Crunch® Technology. And they expertly manufacture shoes for standard molds and those that employ Sculpsit® block-molding technology.

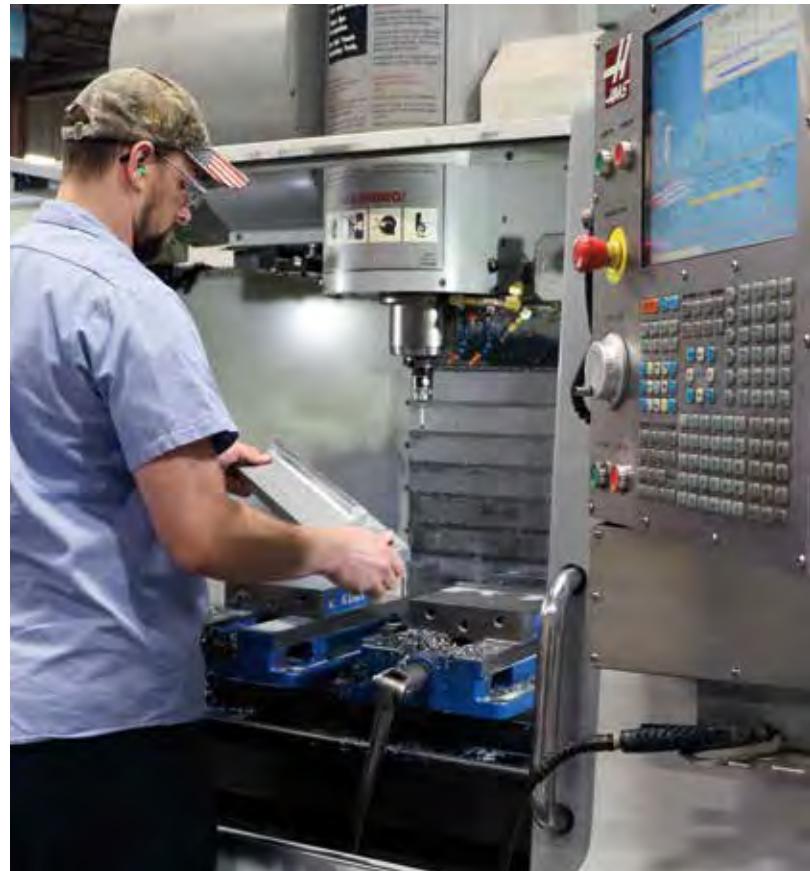


MAINTENANCE AND REPAIR SERVICES

AMTC offers extensive repair and maintenance services to meet your job requirements. Whether you need an overhaul of your block molds, or just a couple of wear parts, AMTC maintains a stock of commonly replaced parts that ensure fast turnaround times and

keep your plant up and running. Here are just some of the maintenance and repair services AMTC offers:

- Mold reline and repair services
- Splitter assembly maintenance and repair



EXPERIENCE IS THE DIFFERENCE

The highest quality materials and the best tools are a great start, the real difference maker is the people who make up the AMTC team. Each member of the core team has more than 20 years experience producing the molds and tooling that keeps your production lines going strong.

The AMTC team brings these capabilities to your job:

- Engineering Services
- Design Services Using 3D CAD Software
- Machining and Welding Services
- Manufacturing with High-Speed Milling and CNC Machinery

Industry-Best Customer Service

If you've worked with AMTC, you know Sheryl. Her proficiency ensures your order is complete, correct, within budget and delivered on time, making your experience with AMTC effortless. It's likely Paul has been out to your plant. He's a valuable resource who will consult with you to make your system run smoothly and ensure your molds and tooling are perfectly tuned and your product is consistent. Have a technical question? Mark is there for you. He provides the design and engineering services that set AMTC apart.

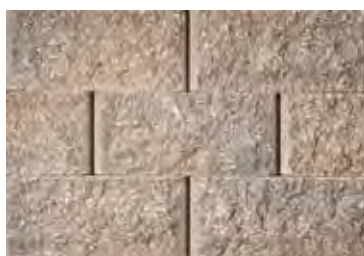


DIAMOND PRO[®]

Retaining Wall



STRAIGHT FACE



STRAIGHT FACE



BEVELED FACE



BEVELED FACE

A LEGACY WALL SYSTEM WITH TIMELESS APPEAL

Using the original rear lip block, the Diamond Pro Retaining Wall System is one of the most popular in the line of Belgard Commercial products. It's ideal for large-scale projects, giving landscapes substance and stability. Anchor Mold and Tooling Company has been building and servicing molds for this system since 1996. If you don't offer Diamond Pro, your product line is missing a mainstay. If you do offer Diamond Pro, make sure your molds are ready to handle that next massive wall project that is likely around the corner.

STRAIGHT FACE



8 x 18 x 12
74 lbs.

BEVELED FACE



8 x 18 x 12
72 lbs.

CORNER UNIT



8 x 18 x 9
101 lbs.

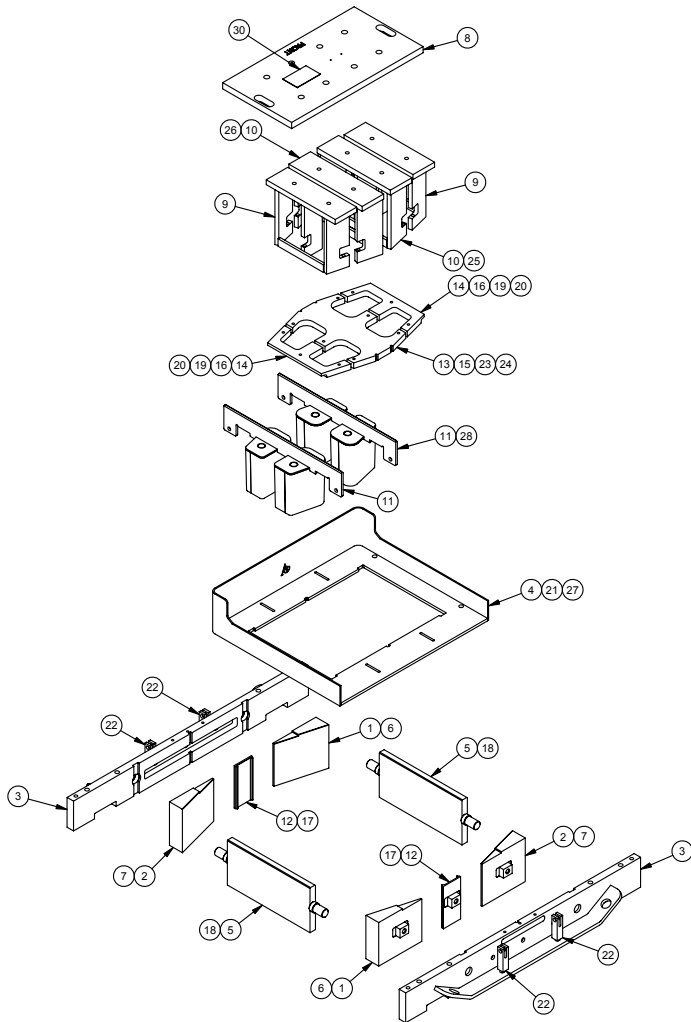
CAP UNIT



4 x 17 1/4 - 12 x 10 3/4
47 lbs.



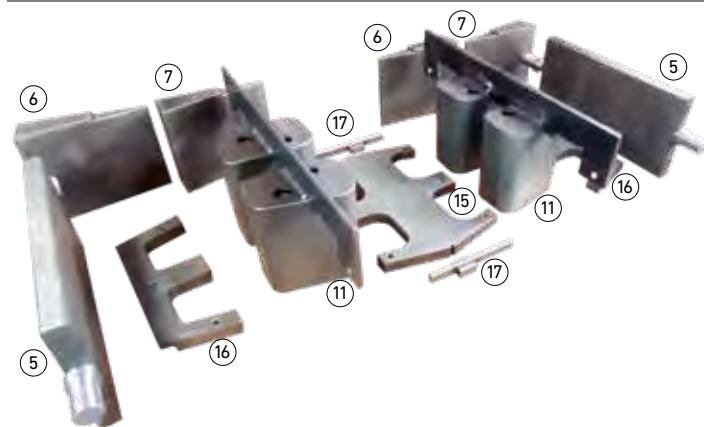
DIAMOND PRO[®] MOLD ASSEMBLY



Whether you need an entire overhaul of your molds, or some wear parts, AMTC maintains a stock, and will ship them to your facilities to arrive when you need them.

MOLD REPLACEMENT PARTS

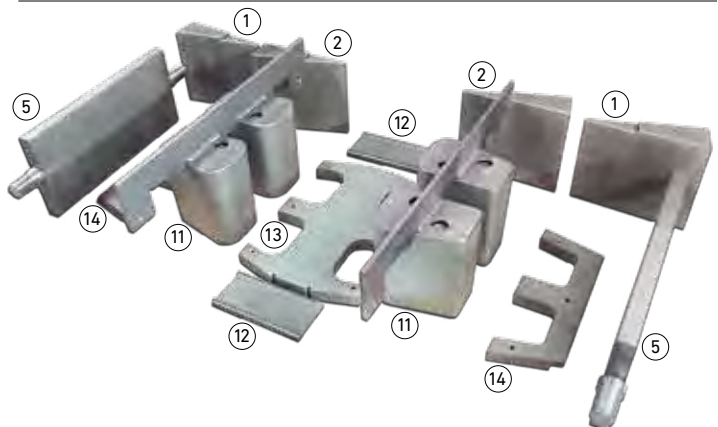
DIAMOND PRO STRAIGHT FACE



Item	Straight	Beveled	Part Number	Description
1	0	2	103009	Left side wear plate assy, 3-way split
2	0	2	103010	Right side wear plate assy, 3-way split
3	2	2	103011	Mold side bar assy
4	1	1	103012	Mold top plate assy
5	2	2	103013	Outside division plate assy
6	2	0	103015	Left side wear plate assy, straight split
7	2	0	103016	Right side wear plate assy, straight split
8	1	1	103021	Stripper head top
9	2	2	103022	Stripper head outside plunger
10	2	2	103023	Stripper head center plunger
11	2	2	103029	Core assembly
12	0	2	103039	Center split with helpers, 3-way split
13	0	1	103051	Center stripper shoe with 1/8 bevel
14	0	2	103052	Outside stripper shoe with 1/8 bevel
15	1	0	103053	Center stripper shoe with 1/8 bevel
16	2	0	103054	Outside stripper shoe with 1/8 bevel
17	2	0	103078	Center split V, straight split assy
18	0	0	103088	Outside division plate assy
19	0	0	103090	Outside stripper shoe with 1/8 bevel
20	0	0	103091	Outside stripper shoe with 1/8 bevel
21	0	0	103092	Mold top plate assy
22	4	4	491015	Hold down block
23	0	0	558008	Shoe
24	0	0	558009	Shoe
25	0	0	558010	Asy center plunger
26	0	0	558018	Asy center plunger
27	0	0	558023	Mold top plate assy
28	0	0	558027	Core bar assy
29	0	0	558029	Rake off blade
30	1	1	Name Plate	AWS Engraved Mold Name Plate

In addition to Straight Face and Beveled Face (3-way split), this mold assembly list includes parts for 3-Way Split with Scores, Straight Split with Scores and Straight Split with Virtual Joint. Ask your AMTC rep for details.

DIAMOND PRO BEVELED FACE



CONTACT AMTC

For inquiries or to request a quote, please contact Sheryl Zinter: (952) 979-8408 | szinter@anchorwall.com
Anchor Mold & Tool Company | 2271 2nd St. N. | North St. Paul, MN 55109

AMTC[™]
ANCHOR MOLD & TOOL COMPANY

DIAMOND PRO STONE CUT[®]

Retaining Wall

FLAT ROUGH FACE



STONE CUT



VIRTUAL JOINT

CONTRACTORS' CHOICE FOR LARGE SCALE PROJECTS

A wall built with the Diamond Pro Stone Cut[®] is an incredibly durable one. Not only will the wall last, the rough-hewn style is timeless as well. Add the Virtual Joint to the mix to give your next wall system an appealing multipiece look, while achieving the installation speed of a single-piece system. The performance of Diamond Pro Stone Cut makes it the proven solution for tall walls, DOT projects, commercial developments, water applications and other critical wall needs. It features the original rear-lip block, and tall walls can be built when designed by a qualified engineer.



VIRTUAL JOINT

FLAT ROUGH FACE



8 x 18 x 12
77 lbs.

VIRTUAL JOINT LEFT



8 x 18 x 12
77 lbs.

VIRTUAL JOINT RIGHT



8 x 18 x 12
77 lbs.

CORNER UNIT



8 x 18 x 9
101 lbs.

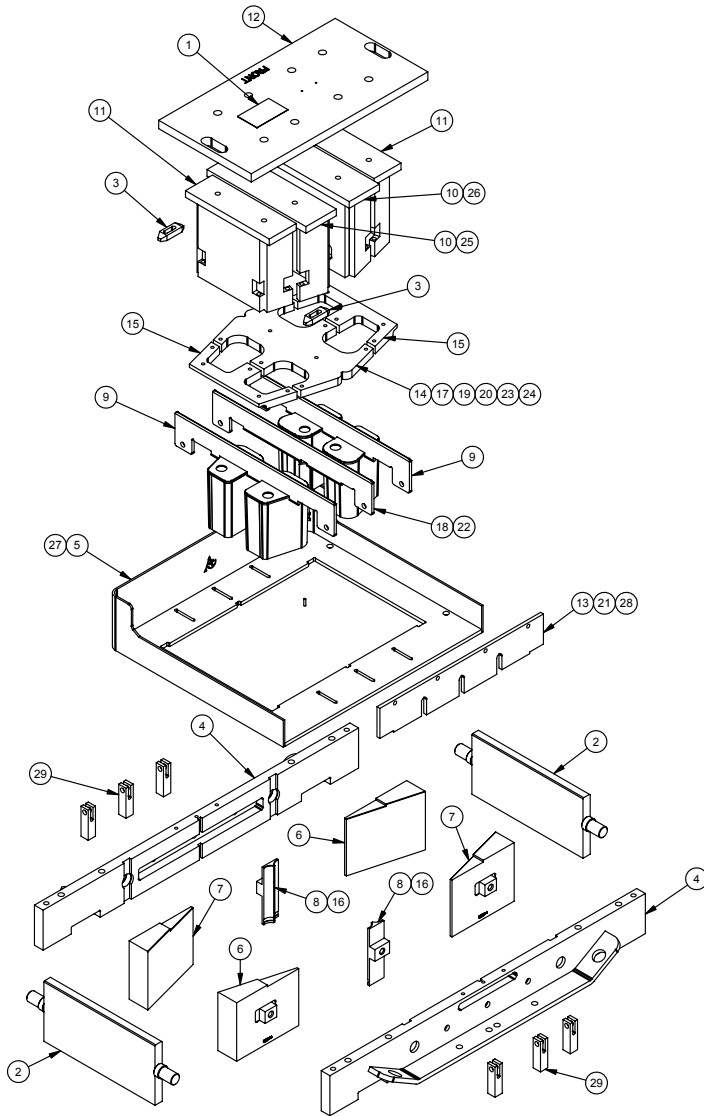
CAP UNIT



4 x 17 1/4" - 12 x 10 3/8"
47 lbs.



DIAMOND PRO STONE CUT® MOLD ASSEMBLY

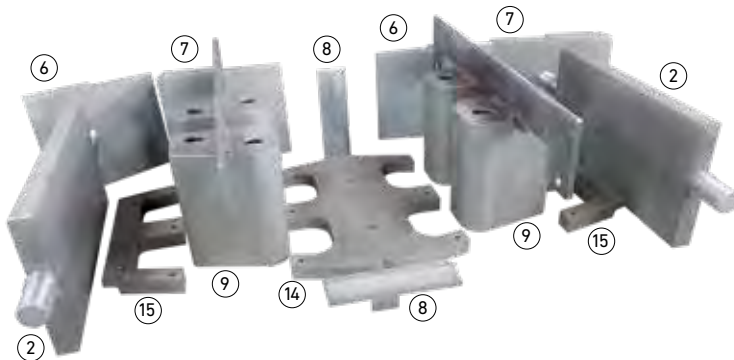


Item	Flat Rough Face	Virtual Joint	Part Number	Description
1	1	1	Name Plate	AWS Engraved Mold Name Plate
2	2	2	103013	Outside division plate assy
3	2	0	30405	Plain clamp (TE-CO)
4	2	2	363008	Side bar assy
5	1	0	363010	Mold top plate assy
6	2	2	363011	Left side wear plate
7	2	2	363012	Right side wear plate
8	2	0	363013	Center wear plate
9	2	2	363016	Core bar assy
10	2	2	363017	Asy center plunger
11	2	2	363018	Outside plunger
12	1	1	363019	Stripper head top plate
13	0	0	363021	Cut-off bar
14	1	0	363023	Center stripper shoes with bevel
15	2	2	363024	Outside stripper shoe with bevel
16	0	2	363028	Center wear plate with scores
17	0	0	363035	Center stripper shoe with bevel
18	0	0	363041	Roughface™ core bar assy
19	0	0	363044	Split center shoe
20	0	0	363045	Split center shoe
21	1	0	363050	Cut-off bar
22	0	1	363066	False joint core bar assy
23	0	1	363069	Center shoe
24	0	1	363070	Center shoe
25	0	1	363071	Asy center plunger
26	0	1	363079	Asy center plunger
27	0	1	363081	Mold top plate assy
28	0	1	363084	Cut-off bar
29	4	6	491015	Hold down block

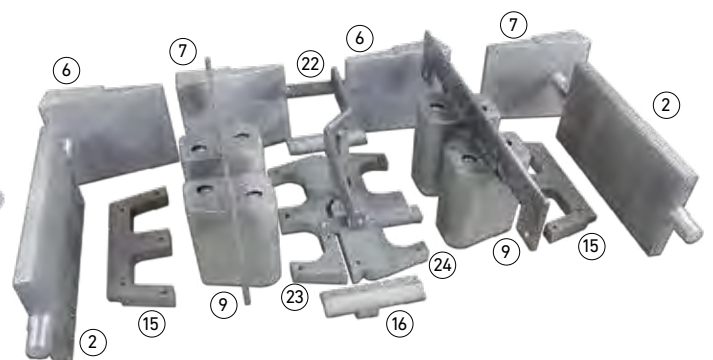
Whether you need an entire overhaul of your molds, or some wear parts, AMTC maintains a stock, and will ship them to your facilities to arrive when you need them.

MOLD REPLACEMENT PARTS

DIAMOND PRO STONE CUT



DIAMOND PRO STONE CUT VIRTUAL JOINT



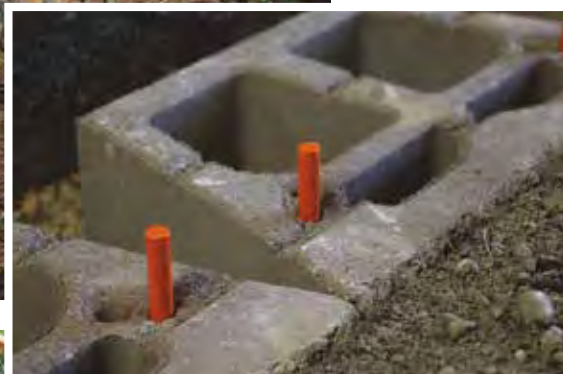
CONTACT AMTC

For inquiries or to request a quote, please contact Sheryl Zinter: (952) 979-8408 | szinter@anchorwall.com
Anchor Mold & Tool Company | 2271 2nd St. N. | North St. Paul, MN 55109

AMTC™
ANCHOR MOLD & TOOL COMPANY

DIAMOND PRO[®] PIN SYSTEM

Retaining Wall



STRAIGHT SPLIT



VICTORIAN FACE



MAKE A CONNECTION WITH THIS WALL SYSTEM

With several attractive face styles to choose from, the Diamond Pro[®] Pin System retaining wall is quickly becoming the go-to product for many contractors. Not only does the pin system allow for a positive connection with geogrid reinforcement, but they ensure that the installation crew will quickly and efficiently maintain the exact setback when building a wall. Perfect for tall, straight and walls with curves, this flexible and cost efficient system is perfect for large commercial projects, municipal properties and residential retaining wall projects alike.



STRAIGHT SPLIT



8 x 18 x 12
75 lbs.

BEVELED SPLIT



8 x 18 x 12
77 lbs.

STONE CUT



8 x 18 x 12
76 lbs.

VICTORIAN FACE

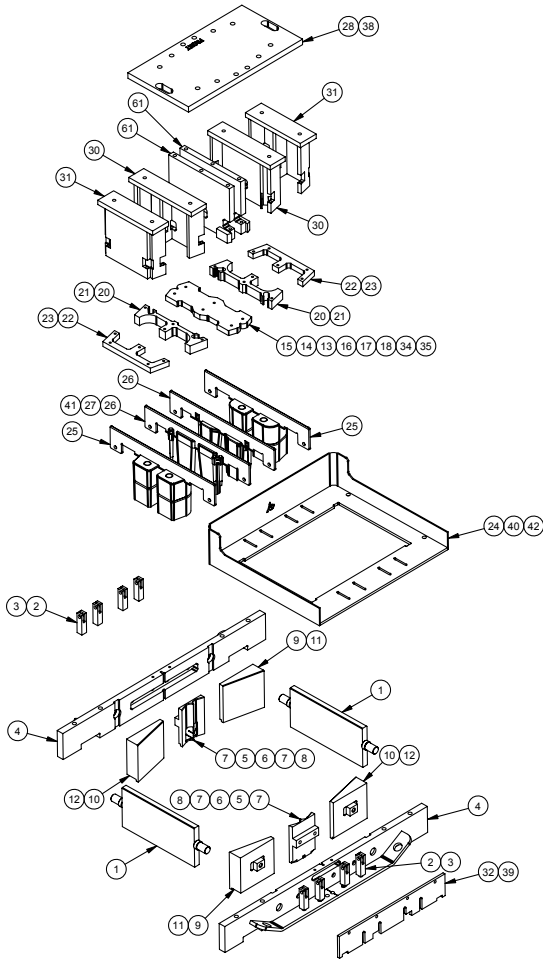


8 x 18 x 12
75 lbs.

PINS

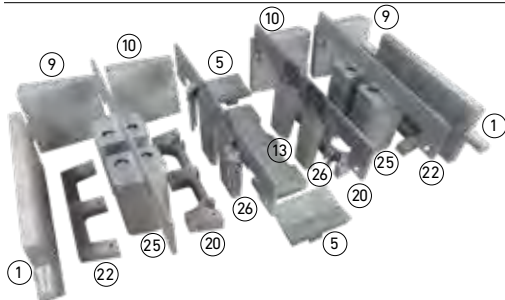


DIAMOND PRO® PIN SYSTEM MOLD ASSEMBLY

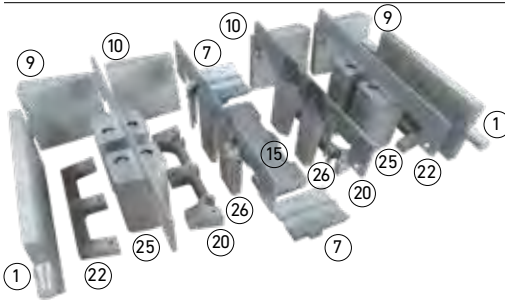


MOLD REPLACEMENT PARTS

DIAMOND PRO PIN SYSTEM STRAIGHT SPLIT

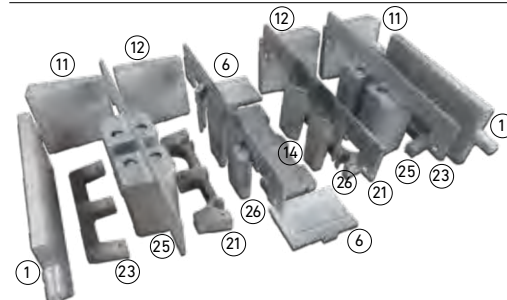


DIAMOND PRO PIN SYSTEM STONE CUT

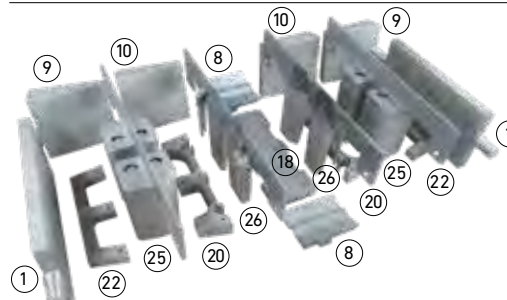


Item	Straight Split	Beveled Split	Stone Cut	Victorian Face	Part Number	Description
1	2	2	2	2	103013	Outside division plate assy
2	8	8	8	8	491015	Hold down block
4	2	2	2	2	549708	Side bar assy
5	2	0	0	0	549711	Center wear part straight
6	0	2	0	0	549712	Center wear part beveled
7	0	0	2	0	549713	Center wear part stone cut
8	0	0	0	2	549714	Center wear part victorian
9	2	0	2	2	549715	Left end liner assy
10	2	0	2	2	549716	Right end liner assy
11	0	2	0	0	549719	Left end liner assy beveled
12	0	2	0	0	549720	Right end liner assy beveled
13	1	0	0	0	549723	Center shoe straight split
14	0	1	0	0	549724	Center shoe beveled split
15	0	0	1	0	549725	Center shoe stone cut
18	0	0	0	1	549728	Center shoe victorian face
19	0	0	0	1	549729	Shoe score
20	2	0	2	2	549730	Mid shoe
21	0	2	0	0	549731	Mid shoe beveled split
22	2	0	2	2	549732	Outside shoe
23	0	2	0	0	549733	Outside shoe
24	1	1	1	1	549734	Spill pan assy
25	2	2	2	2	548736	Thru core bar assy
26	2	2	2	2	549745	Core bar assy 1/4 setback
28	1	1	1	1	549754	Stripper head top plate
30	2	2	2	2	549756	Center plunger assy
31	2	2	2	2	549761	Outside plunger
61	2	2	2	2	549794	Plunger assy

DIAMOND PRO PIN SYSTEM BEVELED SPLIT



DIAMOND PRO PIN SYSTEM VICTORIAN FACE



Whether you need an entire overhaul of your molds, or some wear parts, AMTC maintains a stock, and will ship them to your facilities to arrive when you need them.

CONTACT AMTC

For inquiries or to request a quote, please contact Sheryl Zinter: (952) 979-8408 | szinter@anchorwall.com
Anchor Mold & Tool Company | 2271 2nd St. N. | North St. Paul, MN 55109

AMTC™
ANCHOR MOLD & TOOL COMPANY

DIAMOND[®] 9D

Retaining Wall



STRAIGHT SPLIT

EASY TO HANDLE, BEAUTIFUL RESULT

At only 52 pounds, the Diamond 9D is a versatile and easy-to-use system for any number of retaining walls designs including straight and curved walls, tiered planters and tall walls when used with engineered reinforcement. Cores lighten the load, and provide a space for backfill that help to secure the blocks in place. This system uses the proven interlocking rear lip design, making it easy to maintain perfect setback. Not only is the Diamond 9D a functional retaining wall solution, its distressed, rough-hewn blocks provide an old world look. If you want to add beauty to your next landscape project, you want the Diamond 9D.

DIAMOND 9D



6 x 17 $\frac{3}{4}$ x 9
52 lbs.

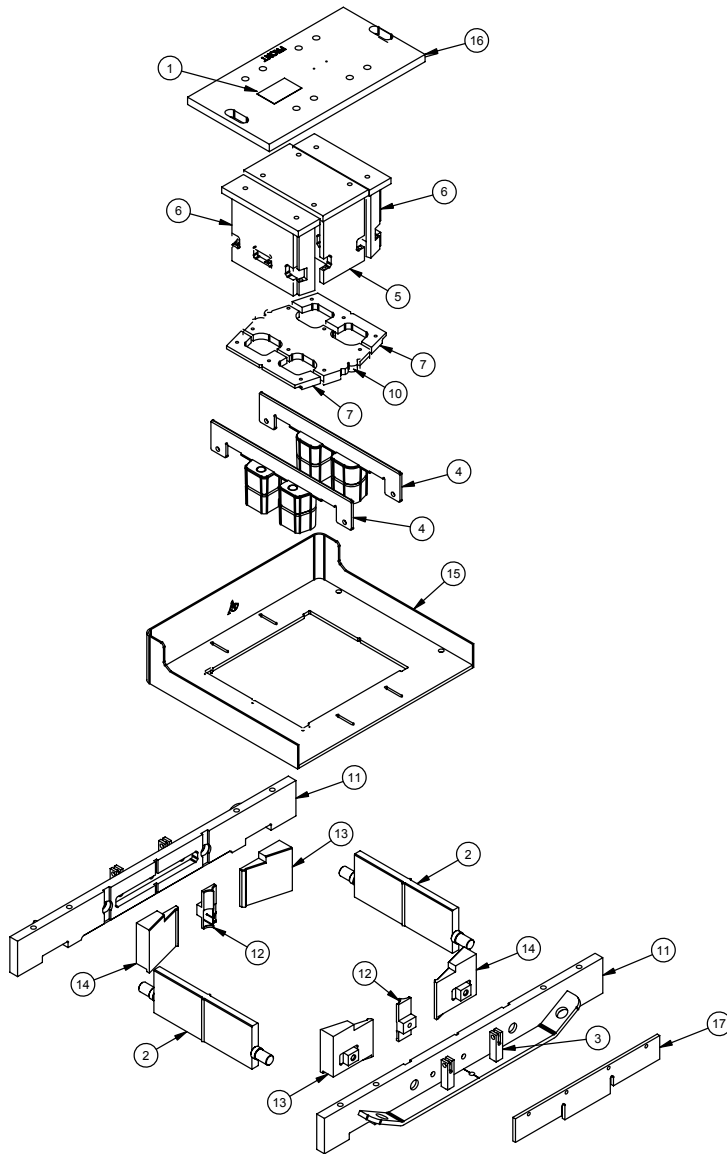
SHORTCUT[®] CAP



3 x 13 x 7/8
23 lbs.



DIAMOND® 9D MOLD ASSEMBLY



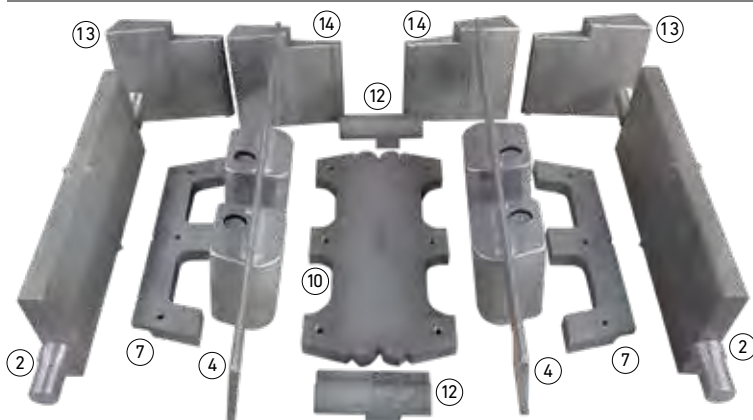
Item	Straight Split	Part Number	Description
1	1		Mold name plate
2	2	104009	Outside division plate assy
3	4	491015	Hold down block
4	2	533516	Core bar assy
5	1	533527	Center plunger assy
6	2	533530	Outside plunger assy
7	2	533534	Outside shoe
8	0	533540	Roughface™ core bar assy
9	0	533543	Outside plunger assy
10	1	537928	Center shoe with scores
11	2	539508	Side bar assy
12	1	539510	Center Roughface™
13	2	539511	Left wear plate assy
14	2	539513	Right wear plate assy
15	1	539517	Spill pan assy
16	1	539519	Stripper head top plate
17	1	539520	Cutoff blade
18	0	539521	Center shoe virtual joint with scores
19	0	539522	Center shoe virtual joint with scores
20	0	539523	Spill pan assy
21	0	539525	Cutoff blade

Whether you need an entire overhaul of your molds, or some wear parts, AMTC maintains a stock, and will ship them to your facilities to arrive when you need them.



MOLD REPLACEMENT PARTS

DIAMOND 9D

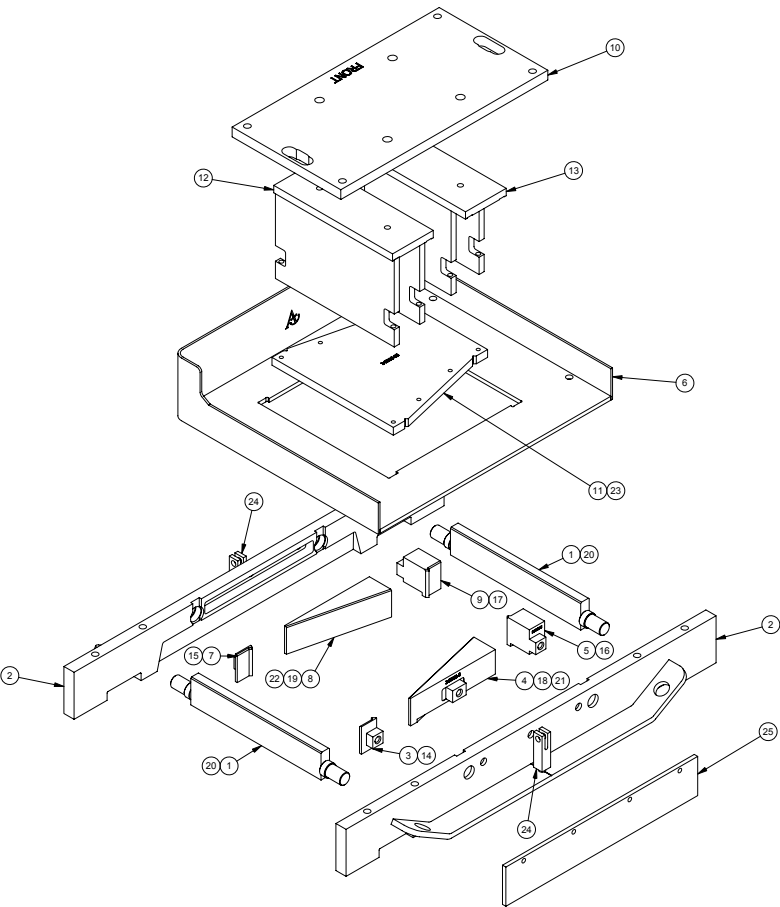


CONTACT AMTC

For inquiries or to request a quote, please contact Sheryl Zinter: (952) 979-8408 | szinter@anchorwall.com
Anchor Mold & Tool Company | 2271 2nd St. N. | North St. Paul, MN 55109

AMTC™
ANCHOR MOLD & TOOL COMPANY

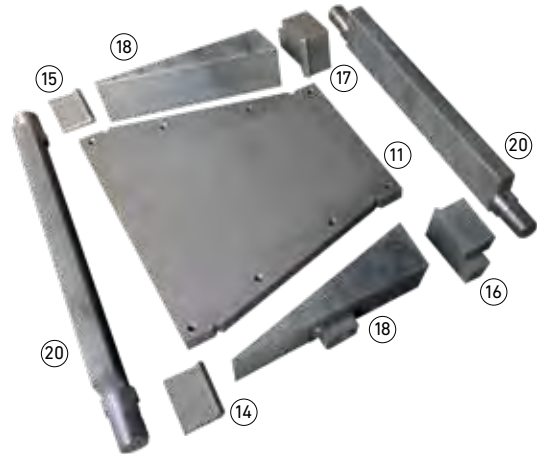
3" XL™ CAP MOLD ASSEMBLY



Whether you need an entire overhaul of your molds, or some wear parts, AMTC maintains a stock, and will ship them to your facilities to arrive when you need them.

MOLD REPLACEMENT PARTS

3" XL CAP



CONTACT AMTC

For inquiries or to request a quote, please contact Sheryl Zinter: (952) 979-8408 | szinter@anchorwall.com
Anchor Mold & Tool Company | 2271 2nd St. N. | North St. Paul, MN 55109

Item	3" Cap Mold	Part Number	Description
2	2	345008	Mold side bar
6	1	345013	Mold top plate
10	1	345018	Stripper head top plate
11	1	345019	Stripper shoe
12	1	345020	Plunger assy
13	1	345021	Plunger assy
14	1	345043	Back right wear plate
15	1	345044	Front right wear plate
16	1	345045	Back left wear plate
17	1	345046	Front left wear plate
18	1	345047	Back center wear plate
19	1	345049	Front center wear plate
20	2	345052	Outside division plate assy
24	2	491015	Hold down block
25	1	800050	Rake off blade blank



3" XL CAP PRODUCT HEADLINE

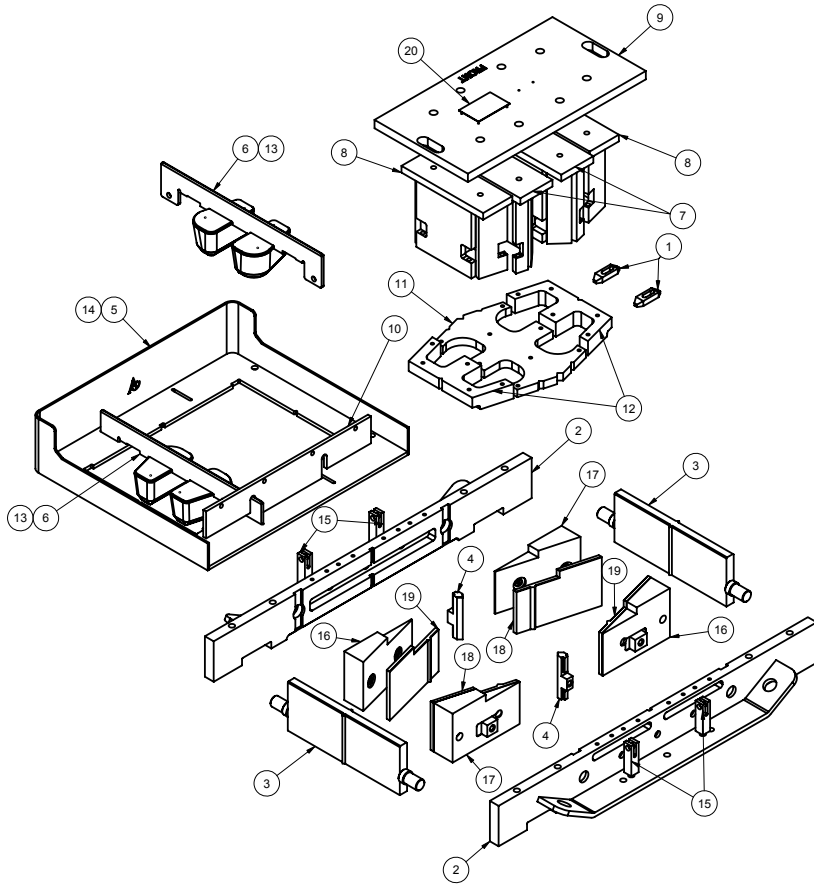
Whether it's a stylish seat wall or it's providing the finishing touch to a retaining wall, the XL cap provides the natural look and texture of chiseled stone. Make sure you cap off all your projects with this versatile and attractive product.

3" XL™ CAP



3 x 18 / 12 x 13
45 lbs.

DIAMOND® 60 MOLD ASSEMBLY

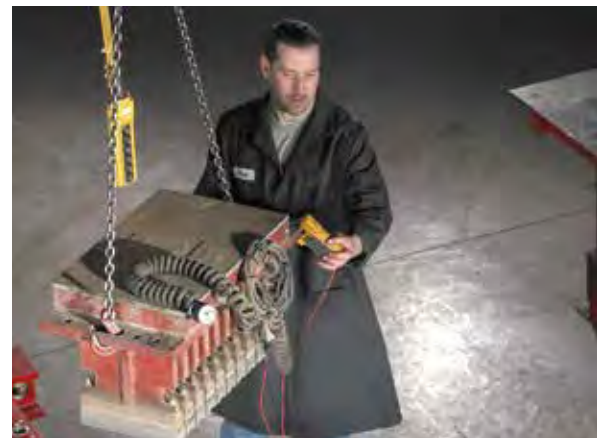
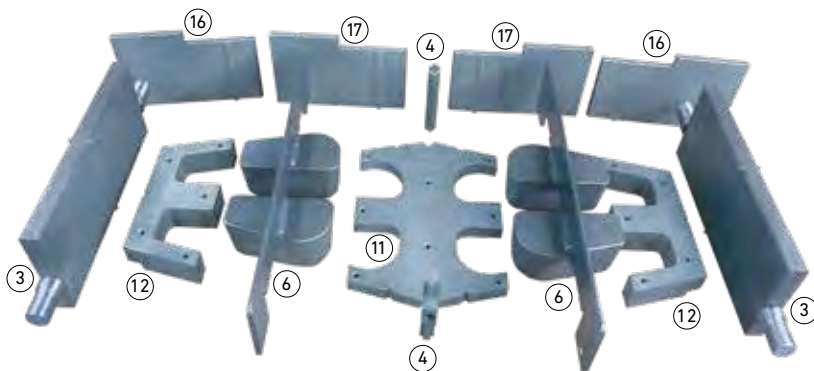


Item	Straight Split	Part Number	Description
1	2	30405	Plain clamp (TE-CO)
2	2	104008	Side bar assy
3	2	104009	Hold down block
4	2	200010	Center split V
5	1	279015	Mold top plate
6	2	279016	Core assembly
7	2	279020	Center plunger
8	2	279022	Outside plunger
9	1	279023	Stripper head toip plate
10	1	279024	Cut-off bar
11	1	279030	Center shoe with 1/8-inch bevels
12	2	279031	Outside shoe with 1/8-inch bevels
13	0	279056	Core assembly
14	0	279059	Spill pin assy
15	4	491015	Hold down block
16	2	500037	WLD - Right side plate holder
17	2	500039	Left wear plate holder assy
18	2	500041	Left side wear plate assy
19	2	500043	Right side wear plate assy
20	1		Mold name plate

Whether you need an entire overhaul of your molds, or some wear parts, AMTC maintains a stock, and will ship them to your facilities to arrive when you need them.

MOLD REPLACEMENT PARTS

DIAMOND 60



DIAMOND 60 PRODUCT HEADLINE

Diamond 60 copy

DIAMOND 60



6 x 17 1/4 x 12
74 lbs.

SHORTCUT® CAP



3 x 13 x 7/8
23 lbs.

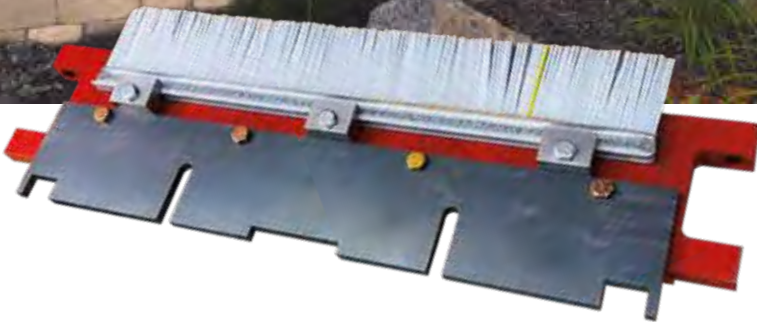
CONTACT AMTC

For inquiries or to request a quote, please contact Sheryl Zinter: (952) 979-8408 | szinter@anchorwall.com
Anchor Mold & Tool Company | 2271 2nd St. N. | North St. Paul, MN 55109

AMTC™
ANCHOR MOLD & TOOL COMPANY

SPECIALTY

Products



COMPLETE CUTOFF BAR ASSEMBLY

UNIQUE TO STOCK, PRODUCTS THAT KEEP YOU RUNNING

In addition to producing complete molds and their common wear parts, AMTC is a full-service fabrication facility. The shop is outfitted with all the tools necessary to produce, repair and maintain a number of products, however it's the highly skilled craftsmen that makes AMTC the trusted source of quality products you rely on to keep your operation working smoothly. AMTC is dedicated to the highest standards, and is ready to serve your needs—whether it's a part unique to your organization, or if you need any one of the dozens of parts they keep in stock.

AMTC produces a number of specialty parts that help your molds operate at peak efficiency. For example, the cutoff bar assembly shown above removes excess material from the top of your mold, and then cleans the mold with the brushes. We create OEM parts for all of the major mold manufacturers.



CRUNCH® TECHNOLOGY SPLITTER ASSEMBLIES



THE SPLIT IS THE DIFFERENCE

Retaining wall blocks split with Crunch® Technology provide a rough hewn texture giving retaining walls a natural looking appearance. ShortFlex technology splits blocks that are less than six inches, and TallFlex technology splits blocks six inches and taller.

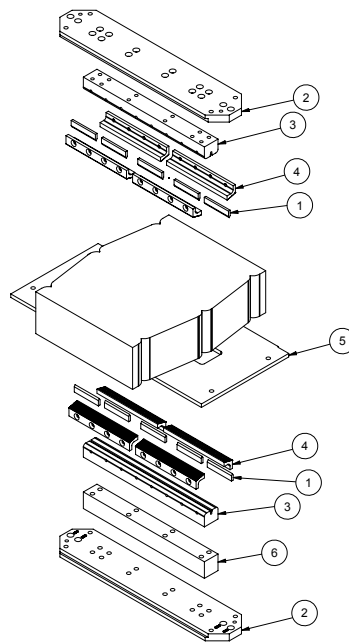


HIGHLAND STONE® USING CRUNCH® TECHNOLOGY

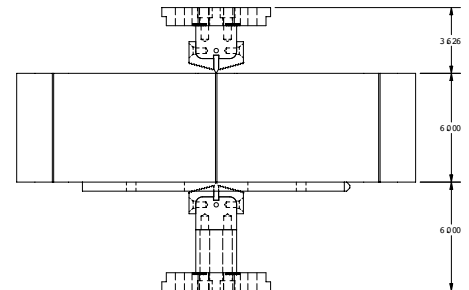


ASPEN STONE® USING CRUNCH® TECHNOLOGY

CRUNCH TECHNOLOGY — TALLFLEX

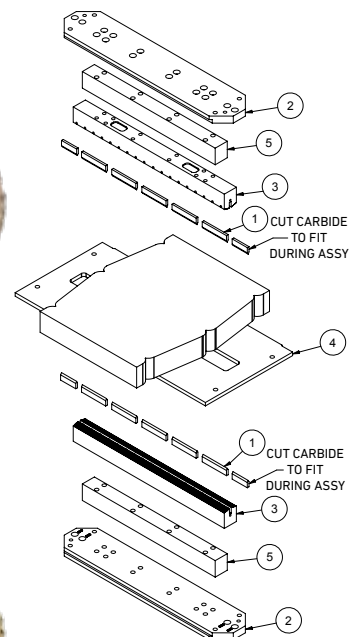


Item	Quantity	Part Number	Description
1	10	489004	4-inch carbide
2	2	489017	Comm on part top and bottom base plate
3	2	534509	Cartridge std. taps
4	8	534510	Serrations
5	1	540908	Wear plate
6	1	534511	Spacer

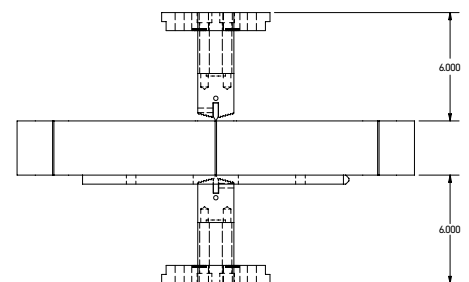


Use Crunch TallFlex to split the following: Highland Stone® retaining and freestanding walls, Diamond® 9D retaining and freestanding walls, Diamond Stone Cut® Formal, Hampton Stone Cut™, Diamond® 10D, Bayfield® retaining and freestanding walls, Vertica Stone Cut®, Vertica Pro Stone Cut®, Diamond Pro® Pinned Stone Cut and Diamond Pro Stone Cut®

CRUNCH TECHNOLOGY — SHORTFLEX



Item	Quantity	Part Number	Description
1	10	489004	4-inch carbide
2	2	489017	Comm on part top and bottom base plate
3	2	534509	Cartridge std. taps
4	8	534510	Serrations
5	1	540908	Wear plate
6	1	534511	Spacer



Use Crunch ShortFlex to split the following: Carlton®, Hudson Stone™, Tango™ (add a T-Blade), 3" Highland Stone® retaining and freestanding wall units, Palmer Wall, Celtik® Wall, Aspen Stone® and ShortCut® Cap.

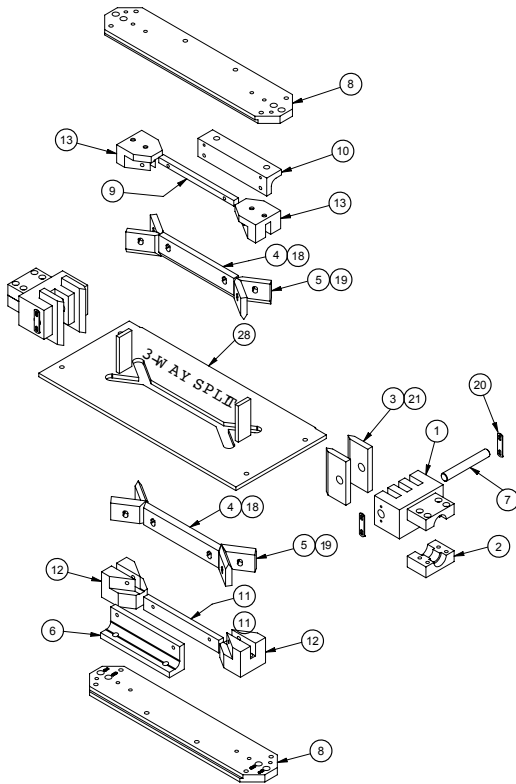
CONTACT AMTC

For inquiries or to request a quote, please contact Sheryl Zinter: (952) 979-8408 | szinter@anchorwall.com
Anchor Mold & Tool Company | 2271 2nd St. N. | North St. Paul, MN 55109

AMTC™
ANCHOR MOLD & TOOL COMPANY

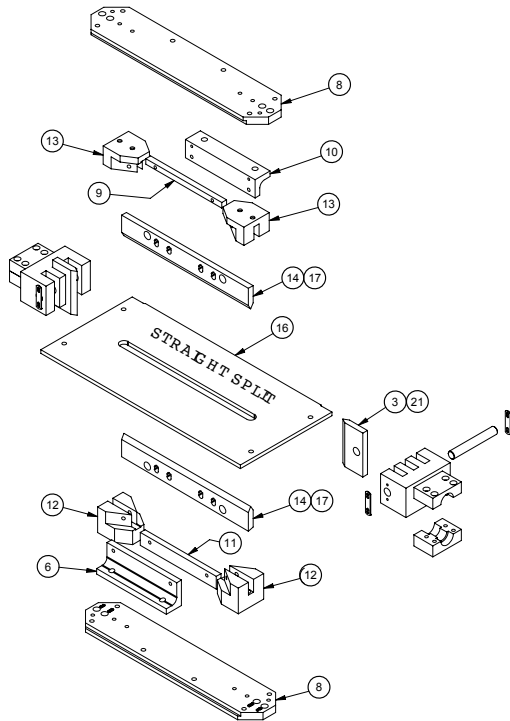
SPLITTER BLADE ASSEMBLY VERTICA®, VERTICA PRO® AND DIAMOND PRO®

THREE-WAY SPLIT (BEVELED)

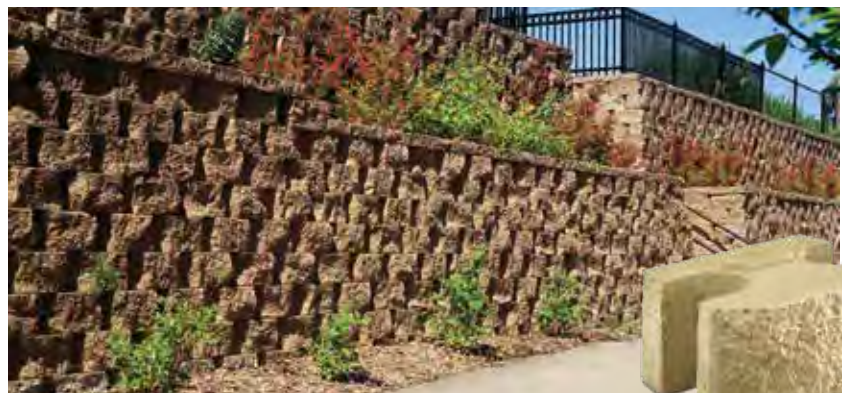


Item	3-Way Split A2 Blades	3-Way Split Carbide Blades	Straight Split A2 Blades	Straight Split Carbide Blades	Part Number	Description
1	2	2	2	2	113008	Splitter blade holder assembly
2	2	2	2	2	113009	Splitter blade holder collar
3	4	0	2	0	113010	6" side knife A2
4	2	0	0	0	113011	12" straight blade A2
5	8	0	0	0	113012	WYE blade A2
6	1	1	1	1	113014	Splitter blade bottom straight holder
7	2	2	2	2	113015	Splitter blade side knife pin
8	2	2	2	2	113017	Top and bottom base plate
9	1	1	1	1	113018	Splitter bladetop long spacer
10	1	1	1	1	113020	Splitter blad top straight holder
11	1	1	1	1	113021	Splitter blade bottom long spacer
12	2	2	2	2	113023	Splitter blade WYE bottom holder
13	2	2	2	2	113024	Splitter blade WYE top holder
14	0	0	2	0	113027	20" long straight blade carbide
16	0	0	1	1	113032	Wear plate straight split
17	0	0	0	2	113038	20" long straight blade carbide
18	0	2	0	0	252014	12" splitter blade carbide
19	0	8	0	0	252016	WYE knife carbide
20	4	4	4	4	489010	Pin retainer
21	0	4	0	2	489027	6" side knife carbide
28	1	1	1	1	113029	Wear plate 3-way split assy

STRAIGHT SPLIT



VERTICA® STRAIGHT FACE



VERTICA® BEVELED FACE (3-WAY)

CONTACT AMTC

For inquiries or to request a quote, please contact Sheryl Zinter: (952) 979-8408 | szinter@anchorwall.com
Anchor Mold & Tool Company | 2271 2nd St. N. | North St. Paul, MN 55109

AMTC™
ANCHOR MOLD & TOOL COMPANY

MOLD RENTAL SERVICES



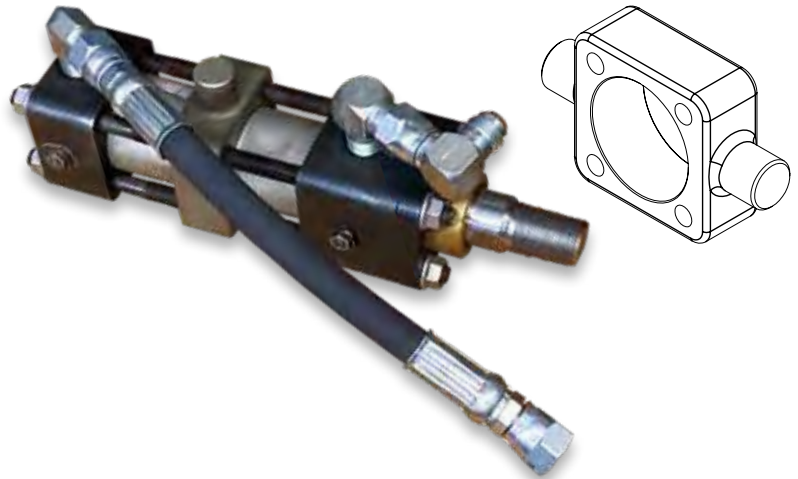
OUR INVENTORY CAN EXPAND YOUR PRODUCT OFFERING

Mold rental is an economical way to try out a new product before making the commitment of purchasing a new mold. Perhaps you'd like to round out a product line with accessories, such as cap and corner units for the Diamond Pro® Quarried Face SRW. Anchor Wall Systems has more than 150 molds ready to go for Besser 3@X, Columbia 3@X and Masa/Rekers/Tiger board machines. The technicians at AMTC expertly refurbish each mold when they return, so they work like new. Contact Sheryl Zinter (952) 979-8408 for details about rental.



A TRUSTED SOURCE FOR SHOP SERVICES

The talented AMTC team provides shop services beyond mold building and repair. From welding to wiring, drilling to sharpening, AMTC can help you with your project. Reach out to us with your needs, and expect an expert result.



INNOVATION COMES NATURALLY

AMTC craftsmen are always looking for ways to improve their products—as well as other company's products. A good example is the the cylinder mount on the hydraulic cylinder pictured above. The mount is prone to wear out, and you can't buy that replacement part from the manufacturer. AMTC designed and manufactured a replacement part that is more robust than the OEM's part—it does the job right. Instead of spending money on a whole new hydraulic cylinder, AMTC will replace the mount at a fraction of the price. If you're having an issue with a part, AMTC is up to the challenge.

CONTACT AMTC

For inquiries or to request a quote, please contact Sheryl Zinter: (952) 979-8408 | szinter@anchorwall.com
Anchor Mold & Tool Company | 2271 2nd St. N. | North St. Paul, MN 55109

AMTC™
ANCHOR MOLD & TOOL COMPANY

TOOLS OF THE TRADE

STATE-OF-THE ART MEETS OLD SCHOOL

AMTC has the latest CNC mills that are able to machine complex parts to precision tolerances from a piece of steel in a matter of minutes. In addition, the skilled craftsmen of AMTC utilize an enduring hands-on approach to create and repair parts.



MANUAL MILL



HYDRAULIC PRESS



CARBIDE CUTTER

FULL SERVICE REPAIR AND MAINTENANCE

Welding: With certified welders on-site, AMTC can weld mold parts, molds, core bars, splitter blades and wear plates to meet specs.

Hydraulics: AMTC repairs custom-made hydraulic configurations using crimped high pressure hoses and various fittings for specialty molds/customer requirements.

Carbide Cutting: AMTC cuts carbide to specified length and angle for splitter blade inserts.

Heaters: AMTC uses custom made 240v cast aluminum heaters for each mold/product produced. We repair frayed or broken wires on heaters to get more cycles before the need to purchase new replacements.

Blade Sharpening: AMTC can re-sharpen your A2 splitter blades extending the life of the blades.

Splitter Blades: AMTC produces OEM splitter blades and custom blade configurations per your requirements.

Mold repair: Check with us to see if we can repair or rebuild your mold.

CONTACT AMTC

For inquiries or to request a quote, please contact Sheryl Zinter: (952) 979-8408 | szinter@anchorwall.com
Anchor Mold & Tool Company | 2271 2nd St. N. | North St. Paul, MN 55109

AMTC™
ANCHOR MOLD & TOOL COMPANY



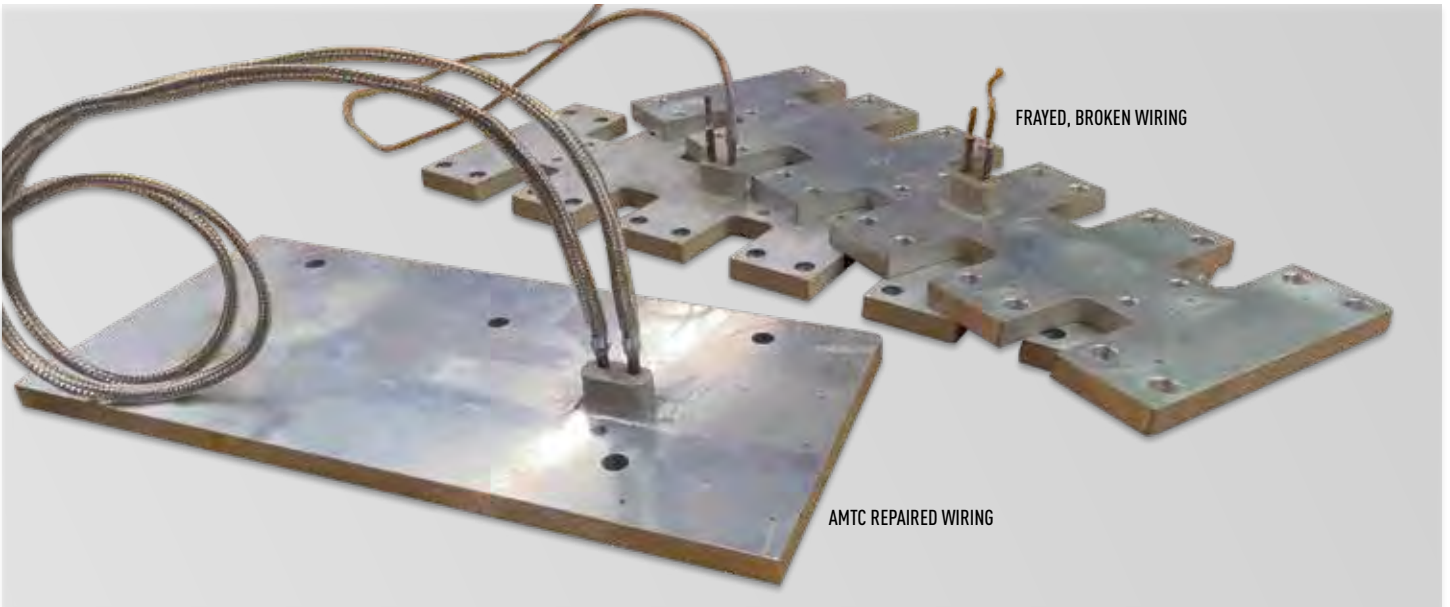
SURFACE GRINDER



HOSE CRIMPER



Parts wear out. Sharp things get dull. Hoses leak. Wires break. It's a fact of life in any industrial setting. AMTC is your go-to source for repair and replacement. Whether the hydraulic system on your mold springs a leak, or the wiring on your heater plates look a little ragged, count on AMTC to not only repair your mold products, but often times return them in good-as-new condition. Once AMTC is done, your equipment is ready to get back to work.



HEATER PLATE WIRING REPAIR

CONTACT AMTC

For inquiries or to request a quote, please contact Sheryl Zinter: (952) 979-8408 | szinter@anchorwall.com
Anchor Mold & Tool Company | 2271 2nd St. N. | North St. Paul, MN 55109

AMTC™
ANCHOR MOLD & TOOL COMPANY



The AMTC team—with a combined 105 years of experience—celebrates 15 years without a recorded workplace injury

AMTCTM
ANCHOR MOLD & TOOL COMPANY