

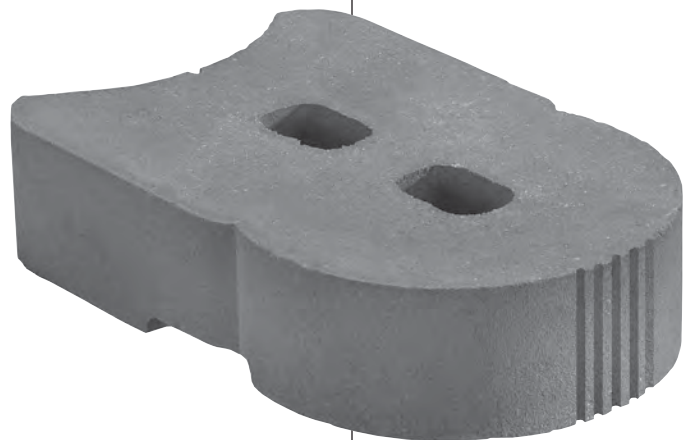
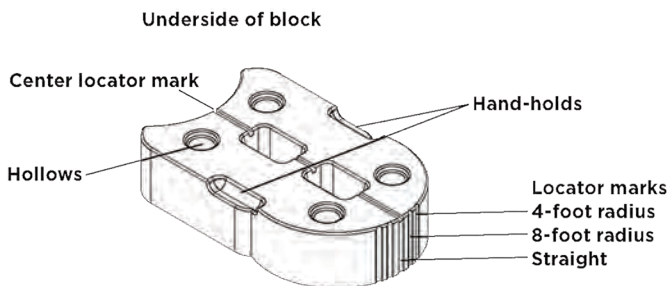


TORPEDO[®]

BASE BLOCK

✓ FEATURES & BENEFITS

- Light-weight block used as a foundation for rear-lip AnchorDiamondSM retaining wall and freestanding wall systems.‡
- Suitable for curves, corners, columns and straight walls.
- Integral hand-holds for easy placement and repositioning.
- Hollows on the bottom surface seat the block into base aggregates for better leveling.
- No core-fill needed.
- No lips to remove or pins to place.
- Locator marks for easy alignment.‡



¹See installation instructions.
²Dimensions and Weights may differ slightly from manufacturer to manufacturer.

H X W X D¹	4" X 15 3/4" X 11"
WEIGHT²	47 LBS.
COVERAGE	1.31 LINEAR FT.